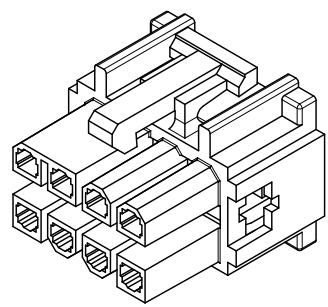
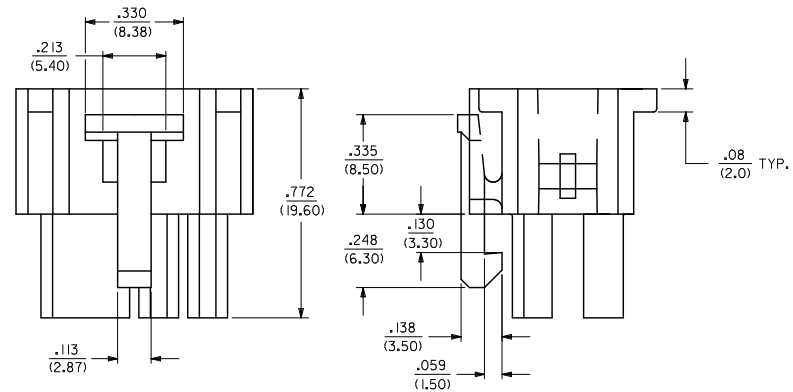
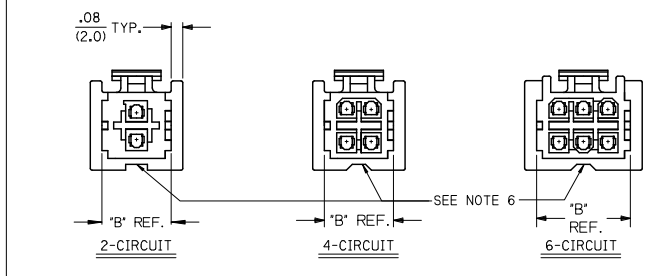
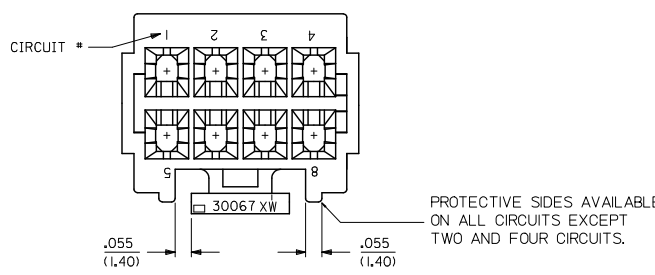
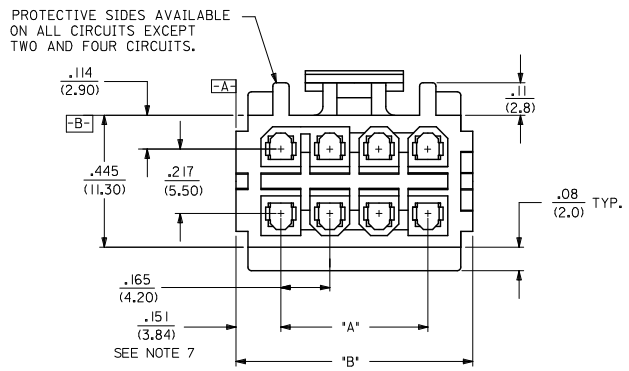


13 12 11 10 9 8 7 6 5 4 3 2 1



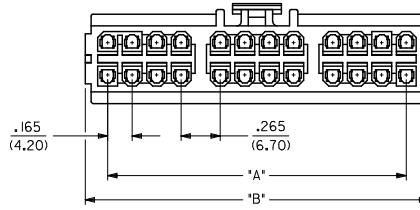
NOTES:

1. MATERIAL: UNFILLED POLYESTER, U.L. 94V-0. HOUSING COLOR: SEE CHART
2. FINISH: N/A
3. PRODUCT SPECIFICATION: PS-5556-003
4. PACKAGING SPECIFICATION: PK-30067-001.
5. HOUSING TO BE USED WITH TERMINAL #5556, AND T.P.A. LOCK #30072-*, RECEPTACLE HOUSING TO MATE WITH PLUG HOUSING #30068, ST. HEADER #30069, AND RT. ANGLE HEADERS #30070 & #44483. HOUSING ACCEPTS CONNECTOR POSITIONING ASSURANCE (C.P.A.) LOCK #30071.
6. RELIEF NOTCH IS OPTIONAL AND MAY OR MAY NOT APPEAR ON 2, 4, 6, 10 & 12 CIRCUIT HOUSINGS ONLY.
7. FOR 2 CKT HOUSING, DIMENSION IS .231/5.88
8. FOR 2 & 4 CKT HOUSINGS, DIMENSION IS .070/1.78
9. THIS PART CONFORMS TO CLASS B REQUIREMENTS OF COSMETIC SPEC PS-45499-002.
10. CHAMFERS ARE OPTIONAL AND MAY OR MAY NOT BE PRESENT ON 16 CIRCUIT HOUSINGS.

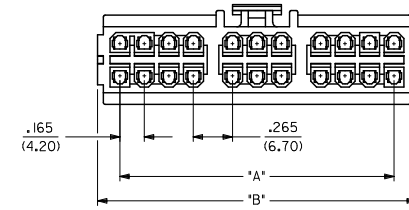


ADDED NOTE 10 EC NO. UEP2011-0234 DRWN: JAGUILAR 2010/08/25 CHKD: BELL 2010/08/25 APPR: SMITH 2010/10/25 H1	QUALITY SYMBOLS 	GENERAL TOLERANCES (UNLESS SPECIFIED)		DIMENSION STYLE		SCALE	DESIGN UNITS	THIRD ANGLE PROJECTION	
				IN/MM		4:1	INCH		
		4 PLACES ± .010	3 PLACES ± .010	2 PLACES ± 0.25	1 PLACE ± 0.36	DRAWN BY	DATE		TITLE
		ANGULAR ± 1/2°				RJF	09/23/91		2-24 CKT. RECPT. HSG. MINI-FIT T.P.A. SERIES
DRAFT WHERE APPLICABLE MUST REMAIN WITHIN DIMENSIONS		SEE CHART		CHECKED BY	DATE	MATERIAL NO.		DOCUMENT NO.	
				GEP	09/23/91	MOLLEX INCORPORATED		SHEET NO.	
				APPROVED BY	DATE			1 OF 2	
				FSMITH	2010/10/25				

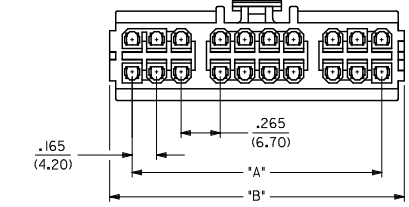
CKT. SIZE	BLACK		NATURAL		DIM. "A"	DIM. "B"
	ENG. NO.	EDP. NO.	ENG. NO.	EDP. NO.		
02	30067-02A2	I5-97-502I	30067-0212	30067-0212	—	.467 (11.86)
04	30067-04A2	I5-97-504I	30067-0412	30067-0412	.165 (4.20)	.467 (11.86)
06	30067-06A2	I5-97-506I	30067-0612	30067-0612	.331 (8.40)	.633 (16.08)
08	30067-08A2	I5-97-508I	30067-0812	30067-0812	.496 (12.60)	.798 (20.27)
10	30067-10A2	I5-97-510I	30067-1012	30067-1012	.661 (16.80)	.963 (24.46)
12	30067-12A2	I5-97-512I	30067-1212	30067-1212	.827 (21.00)	1.129 (28.68)
14	30067-14A2	NOT TOOLED	30067-1412	NOT TOOLED	.992 (25.20)	1.294 (32.87)
16	30067-16A2	I5-97-516I	30067-1612	30067-1612	1.157 (29.40)	1.459 (37.06)
18	30067-18A2	NOT TOOLED	30067-1812	NOT TOOLED	1.520 (38.60)	1.822 (46.28)
20	30067-20A2	NOT TOOLED	30067-2012	NOT TOOLED	1.685 (42.80)	1.987 (50.46)
22	30067-22A2	NOT TOOLED	30067-2212	NOT TOOLED	1.850 (47.00)	2.152 (54.66)
24	30067-24A2	NOT TOOLED	30067-2412	NOT TOOLED	2.016 (51.20)	2.318 (58.88)



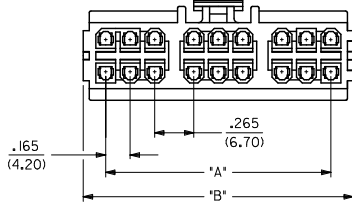
24 CIRCUIT



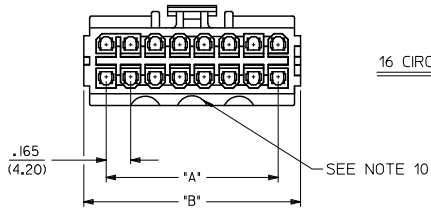
22 CIRCUIT



20 CIRCUIT



18 CIRCUIT



16 CIRCUITS

LEGEND:
 30067 - * * * 2
 CIRCUIT SIZE (02-24)
 HOUSING COLOR
 A = BLACK
 1 = NATURAL

SEE SHEET 1 EC NO: UCP201-0234 DRWN: JAGUILAR 2010/08/25 CHKD: BELL 2010/08/25 APPR: SMITH 2010/10/25	QUALITY SYMBOLS 	GENERAL TOLERANCES (UNLESS SPECIFIED): mm INCH		DIMENSION STYLE IN/MM	SCALE 2:1	DESIGN UNITS INCH	THIRD ANGLE PROJECTION	
		4 PLACES ±.005 ±.005 3 PLACES ±.005 ±.010 2 PLACES ±.025 ±.014 1 PLACE ±.036 ±.014	DRAWN BY RJF	DATE 09/23/91	TITLE 2-24 CKT. RECP. HSG. MINI-FIT T.P.A. SERIES			
		ANGULAR ±1/2°	CHECKED BY GEP	DATE 09/23/91	APPROVED BY FSMITH			
		DRAFT WHERE APPLICABLE MUST REMAIN WITHIN DIMENSIONS	MATERIAL NO. SEE CHART	DATE 2010/10/25	MOLEX INCORPORATED DOCUMENT NO. SD-30067-*			
H1	REV			SIZE C	THIS DRAWING CONTAINS INFORMATION THAT IS PROPRIETARY TO MOLEX INCORPORATED AND SHOULD NOT BE USED WITHOUT WRITTEN PERMISSION			SHEET NO. 2 OF 2