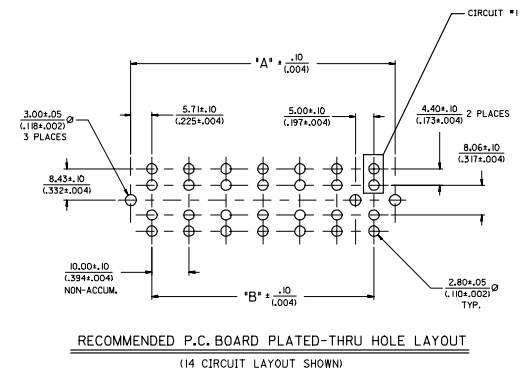
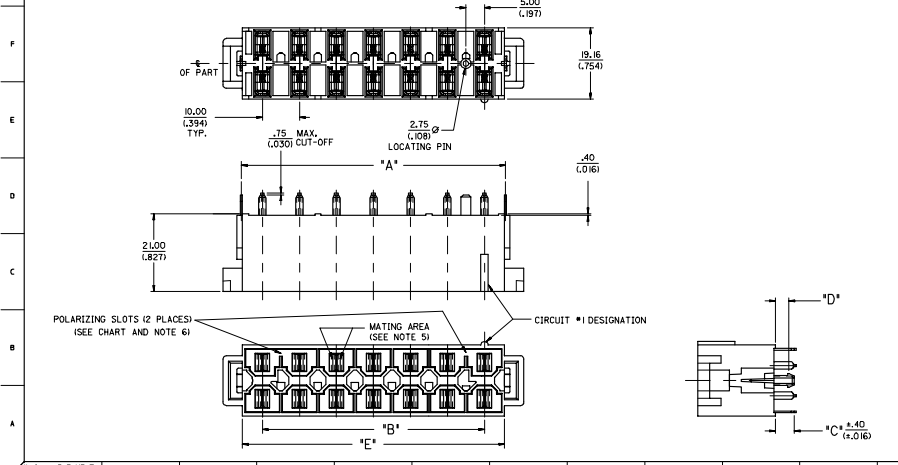


MATERIAL NUMBER	CIRCUITS	DIM. "A"	DIM. "B"	DIM. "C"	DIM. "D"	DIM. "E"	PCB THICKNESS	QUANTITY OF POLARIZING SLOTS	TERMINAL PLATING
4395-1101	6	31.41/(1.237)	20.00/(.787)	3.50/(.137)	1.80/(.071)	30.90/(1.217)		1	
4395-1102	8	41.41/(1.630)	30.00/(1.181)	3.50/(.137)	1.80/(.071)	40.90/(1.610)		2	
4395-1103	10	51.41/(2.024)	40.00/(1.575)	3.50/(.137)	1.80/(.071)	50.90/(2.004)	1.57/(.062)	2	
4395-1104	12	61.41/(2.418)	50.00/(1.969)	3.50/(.137)	1.80/(.071)	60.90/(2.398)		2	
4395-1105	14	71.41/(2.811)	60.00/(2.362)	3.50/(.137)	1.80/(.071)	70.90/(2.791)		2	
4395-1106	6	31.41/(1.237)	20.00/(.787)	5.10/(.201)	2.60/(.102)	30.90/(1.217)		1	
4395-1107	8	41.41/(1.630)	30.00/(1.181)	5.10/(.201)	2.60/(.102)	40.90/(1.610)		2	
4395-1108	10	51.41/(2.024)	40.00/(1.575)	5.10/(.201)	2.60/(.102)	50.90/(2.004)		2	
4395-1109	12	61.41/(2.418)	50.00/(1.969)	5.10/(.201)	2.60/(.102)	60.90/(2.398)		2	
4395-1110	14	71.41/(2.811)	60.00/(2.362)	5.10/(.201)	2.60/(.102)	70.90/(2.791)		2	
4395-1111	6	31.41/(1.237)	20.00/(.787)	5.10/(.201)	3.40/(.134)	30.90/(1.217)		1	
4395-1112	8	41.41/(1.630)	30.00/(1.181)	5.10/(.201)	3.40/(.134)	40.90/(1.610)		2	
4395-1113	10	51.41/(2.024)	40.00/(1.575)	5.10/(.201)	3.40/(.134)	50.90/(2.004)		2	
4395-1114	12	61.41/(2.418)	50.00/(1.969)	5.10/(.201)	3.40/(.134)	60.90/(2.398)		2	
4395-1115	14	71.41/(2.811)	60.00/(2.362)	5.10/(.201)	3.40/(.134)	70.90/(2.791)		2	
4395-1116	6	31.41/(1.237)	20.00/(.787)	8.30/(.327)	6.58/(.259)	30.90/(1.217)		1	
4395-1117	8	41.41/(1.630)	30.00/(1.181)	8.30/(.327)	6.58/(.259)	40.90/(1.610)		2	
4395-1118	10	51.41/(2.024)	40.00/(1.575)	8.30/(.327)	6.58/(.259)	50.90/(2.004)		2	
4395-1119	12	61.41/(2.418)	50.00/(1.969)	8.30/(.327)	6.58/(.259)	60.90/(2.398)		2	
4395-1120	14	71.41/(2.811)	60.00/(2.362)	8.30/(.327)	6.58/(.259)	70.90/(2.791)		2	
4395-1121	10	51.41/(2.024)	40.00/(1.575)	3.50/(.137)	2.60/(.102)	50.90/(2.004)	2.36/(.093)	2	
4395-1905	14	71.41/(2.811)	60.00/(2.362)	3.50/(.137)	1.80/(.071)	70.90/(2.791)	1.57/(.062)	2	
4395-1201	6	31.41/(1.237)	20.00/(.787)	3.50/(.137)	1.80/(.071)	30.90/(1.217)		1	
4395-1202	8	41.41/(1.630)	30.00/(1.181)	3.50/(.137)	1.80/(.071)	40.90/(1.610)		2	
4395-1203	10	51.41/(2.024)	40.00/(1.575)	3.50/(.137)	1.80/(.071)	50.90/(2.004)	1.57/(.062)	2	
4395-1204	12	61.41/(2.418)	50.00/(1.969)	3.50/(.137)	1.80/(.071)	60.90/(2.398)		2	
4395-1205	14	71.41/(2.811)	60.00/(2.362)	3.50/(.137)	1.80/(.071)	70.90/(2.791)		2	
4395-1206	6	31.41/(1.237)	20.00/(.787)	5.10/(.201)	2.60/(.102)	30.90/(1.217)		1	
4395-1207	8	41.41/(1.630)	30.00/(1.181)	5.10/(.201)	2.60/(.102)	40.90/(1.610)		2	
4395-1208	10	51.41/(2.024)	40.00/(1.575)	5.10/(.201)	2.60/(.102)	50.90/(2.004)	2.36/(.093)	2	
4395-1209	12	61.41/(2.418)	50.00/(1.969)	5.10/(.201)	2.60/(.102)	60.90/(2.398)		2	
4395-1210	14	71.41/(2.811)	60.00/(2.362)	5.10/(.201)	2.60/(.102)	70.90/(2.791)		2	
4395-1211	6	31.41/(1.237)	20.00/(.787)	5.10/(.201)	3.40/(.134)	30.90/(1.217)		1	
4395-1212	8	41.41/(1.630)	30.00/(1.181)	5.10/(.201)	3.40/(.134)	40.90/(1.610)		2	
4395-1213	10	51.41/(2.024)	40.00/(1.575)	5.10/(.201)	3.40/(.134)	50.90/(2.004)		2	
4395-1214	12	61.41/(2.418)	50.00/(1.969)	5.10/(.201)	3.40/(.134)	60.90/(2.398)		2	
4395-1215	14	71.41/(2.811)	60.00/(2.362)	5.10/(.201)	3.40/(.134)	70.90/(2.791)		2	
4395-1216	6	31.41/(1.237)	20.00/(.787)	8.30/(.327)	6.58/(.259)	30.90/(1.217)		1	
4395-1217	8	41.41/(1.630)	30.00/(1.181)	8.30/(.327)	6.58/(.259)	40.90/(1.610)		2	
4395-1218	10	51.41/(2.024)	40.00/(1.575)	8.30/(.327)	6.58/(.259)	50.90/(2.004)	6.35/(.250)	2	
4395-1219	12	61.41/(2.418)	50.00/(1.969)	8.30/(.327)	6.58/(.259)	60.90/(2.398)		2	
4395-1220	14	71.41/(2.811)	60.00/(2.362)	8.30/(.327)	6.58/(.259)	70.90/(2.791)		2	
4395-1221	10	51.41/(2.024)	40.00/(1.575)	3.50/(.137)	2.60/(.102)	50.90/(2.004)	2.36/(.093)	2	

**NOTES:**

- MATERIALS:  
HOUSING: 30% GLASS FILLED NYLON 4/6, U.L. 94V-0, COLOR: BLACK.  
TERMINALS: ALLOY 151  
PLATING: TIN OVER NICKEL.  
OR SELECT GOLD AND TIN OVER NICKEL.  
(SEE CHART)
- \* THE PRIMARY SHIPPING CARTON WILL BE LABELED AND THE SECONDARY CARTON WILL BE LABELED WITH THE PRODUCT WITH TIN-LEAD.
- PRODUCT SPEC: PSX-42815-0001
- PARTS ARE NOT TO BE MATED OR UNMATED WHILE CIRCUITS ARE LIVE.
- PART MATES WITH MOLEX RECEPTACLE 43914.
- WHEN USING OVERALL TIN PLATED TERMINALS: FOR APPLICATIONS INVOLVING VIBRATION AND/OR THERMAL CYCLING, MOLEX STRONGLY RECOMMENDS THE USE OF NYE LUBRICANT INVOGOL 7600 ON THE MATING SURFACES OF THE TERMINAL.
- POLARIZING SLOTS TO BE LOCATED BETWEEN CIRCUITS ON EITHER END OF HOUSING OF THE CIRCUIT ROW AS SHOWN.  
EXCEPTION: THE 6 CIRCUIT HOUSING WILL HAVE A SINGLE SLOT ON THE CIRCUIT 1 END ONLY.



QUALITY SYMBOLS ADD'D - 1905 EC. NO. LCP2004-1689 DRN. LOMERCI CHD - 2006/07/21 APPR. LOMERCI DISCRIPTION	GENERAL TOLERANCES (UNLESS SPECIFIED) mm INCH 4 PLACES ± .008 ± .008 3 PLACES ± .008 ± .008 2 PLACES ± .02 ± .008 1 PLACE ± .02 ± .008 ANGULAR ± ±	DIMENSION STYLE MM/IN DRAWN BY DATE LOMERCI 8/21/97 CHECKED BY DATE LOMERCI 8/25/97 APPROVED BY DATE FRY 8/26/97	SCALE 2:1 DESGN UNITS METRIC THIRD ANGLE PROJECTION	TITLE VERTICAL HEADER DUAL ROW 6-14 CIRCUIT MINI-FIT SR.	MATERIAL NO. MOLEX INCORPORATED	DOCUMENT NO. SD-43915-002	SHEET NO. 1 OF 1
	DRAFT WHERE APPLICABLE MUST REMAIN WITHIN DIMENSIONS	SEE CHART	THIS DRAWING CONTAINS INFORMATION THAT IS PROPRIETARY TO MOLEX INCORPORATED AND SHOULD NOT BE USED WITHOUT WRITTEN PERMISSION				