

CIRCUIT SIZE	DIM. 'A'	DIM. 'B'
2	.21 (5.4)	—
4	.38 (9.6)	.17 (4.2)
6	.54 (13.8)	.33 (8.4)
8	.71 (18.0)	.50 (12.6)
10	.87 (22.2)	.66 (16.8)
12	1.04 (26.4)	.83 (21.0)
14	1.20 (30.6)	.99 (25.2)
16	1.37 (34.8)	1.16 (29.4)
18	1.54 (39.0)	1.32 (33.6)
20	1.70 (43.2)	1.49 (37.8)
22	1.87 (47.4)	1.65 (42.0)
24	2.03 (51.6)	1.82 (46.2)

LEGEND

BASE NUMBER 5566 - N * * * * *

CIRCUIT SIZE

ASS'Y TYPE
A : WITHOUT DRAIN HOLES
B : WITH DRAIN HOLES

TERMINAL MATERIAL
SEE NOTE 1

TERMINAL PLATING
SEE NOTE 2

HOUSING MATERIAL
SEE NOTE 1

COLOR OR PACKAGING
BL : BLACK RE : RED GR : GRAY
BU : BLUE YE : YELLOW GRE : GREEN
V : VIOLET OR : ORANGE
TA : TRAY PACKAGING SEE NOTE 4

NOTES:

1. MATERIALS:
HOUSING:
"BLANK"-NYLON 6/6, UL94V-2, COLOR: NATURAL
"210"-NYLON 6/6, UL94V-0, COLOR: NATURAL
"400"-NYLON 6/6, UL94V-0, COLOR: BLACK

TERMINALS:
"BLANK" = BRASS
"PB" = PHOSPHOR BRONZE

2. TERMINAL PLATING:
"BLANK" = BRIGHT TIN 0.00035/(0.00090) MIN.
OVER COPPER .00020/(0.00050) MIN. (BRASS)
TIN .00035/(0.00090) MIN. REFLOW TREATMENT
OR BRIGHT TIN .00035/(0.00090) MIN. (PHOSPHOR BRONZE)
"S"=.000100/(0.00254) MIN. BRIGHT TIN OVER
.000050/(0.00127) MIN. NICKEL
"GS2"=.00015/(0.00038) MIN. SELECT GOLD AND
.000100/(0.00254) MIN. SELECT MATTE TIN
OVER .000050/(0.00127) MIN. NICKEL OVERALL
"GS"=.00030/(0.00076) MIN. SELECT GOLD AND
.000100/(0.00254) MIN. SELECT MATTE TIN
OVER .000050/(0.00127) MIN. NICKEL OVERALL

3. PRODUCT SPECIFICATION: PS-5556-001

4. PACKAGING: "BLANK"= BULK PACKED, "TA"=TRAY PACK PER PK-5566-001

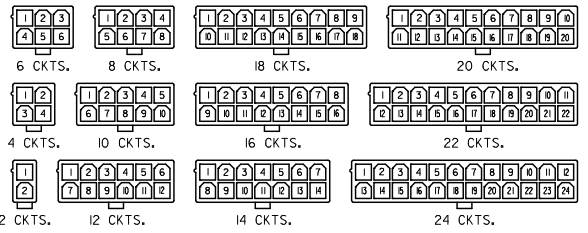
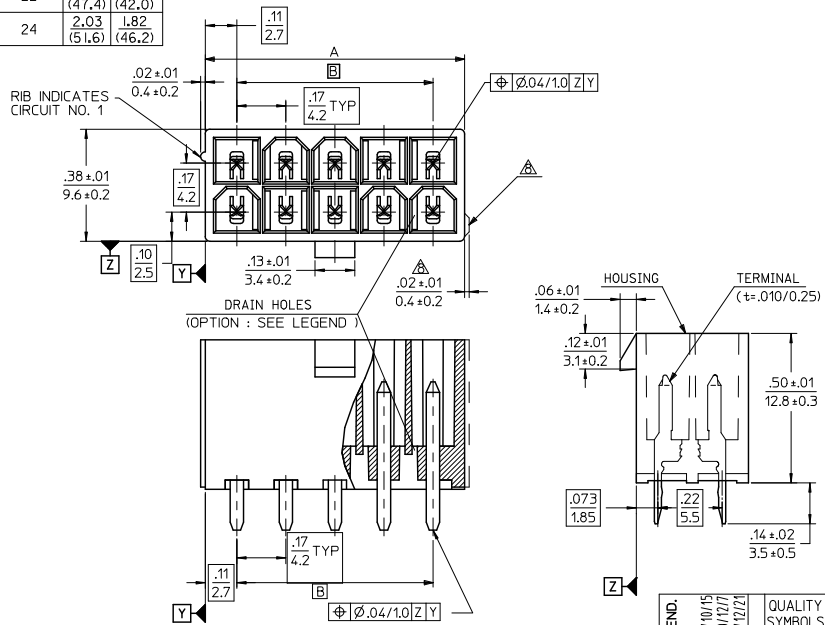
5. PART MATES WITH MINI-FIT JR. RECEPTACLE NO. 5557.

6. PART IS NOT DESIGNED FOR CURRENT SHARING.

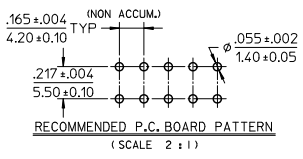
7. PARTS ARE NOT DESIGNED TO BE MATED OR UN-MATED WHILE CIRCUITS ARE LIVE.

8. ANTI-SHINGLING RIB MAY OR MAY NOT APPEAR ON HOUSINGS.

9. PART CONFORMS TO CLASS 'B' REQUIREMENTS OF COSMETIC SPECIFICATION PS-45499-002.



CIRCUIT SIZE LAYOUT



ADD COLORS TO LEGEND: EC NO. UCP2011-1675 DRAWN: JAGUILAR 20/01/15 CHKD: BELL 20/01/17 APPROV: SMITH 20/01/21	QUALITY SYMBOLS ▽=0 ▽=0 ▽=0	GENERAL TOLERANCES (UNLESS SPECIFIED):	DIMENSION STYLE IN/MM	SCALE 4:1	DESIGN UNITS METRIC	THIRD ANGLE PROJECTION
		4 PLACES ± .005 ± .005 3 PLACES ± .005 ± .005 2 PLACES ± .010 ± .010 1 PLACE ± .025 ± .025 ANGULAR ± 3°	DRAWN BY H. HIRAMOTO	DATE '89/04/03	TITLE NEW MINI FIT CONNECTOR HEADER HOUSING ASS'Y -LEAD FREE-	MATERIAL NO. SD-5566-002
DRAFT WHERE APPLICABLE MUST REMAIN WITHIN DIMENSIONS		SEE TABLE	DOCUMENT NO. SD-5566-002			
SIZE C		THIS DRAWING CONTAINS INFORMATION THAT IS PROPRIETARY TO MOLEX INCORPORATED AND SHOULD NOT BE USED WITHOUT WRITTEN PERMISSION				SHEET NO. 1 OF 6

	10	9	8	7	6	5	4	3	2	1	
F	39-30-9247 ▲ -9227 -9207 -9187 -9167 -9147 -9127 -9107 -9087 -9067 ▼ -9047	5566-24BGS2-210 ▲ -22BGS2-210 -20BGS2-210 -18BGS2-210 -16BGS2-210 -14BGS2-210 -12BGS2-210 -10BGS2-210 -08BGS2-210 -06BGS2-210 ▼ -04BGS2-210	39-31-0248 ▲ -0228 -0208 -0188 -0168 -0148 -0128 -0108 -0088 -0068 ▼ -0048	5566-24BGS-210 ▲ -22BGS-210 -20BGS-210 -18BGS-210 -16BGS-210 -14BGS-210 -12BGS-210 -10BGS-210 -08BGS-210 -06BGS-210 ▼ -04BGS-210	39-31-0242 ▲ -0222 -0202 -0182 -0162 -0142 -0122 -0102 -0082 -0062 ▼ -0042	5566-24BS-210 ▲ -22BS-210 -20BS-210 -18BS-210 -16BS-210 -14BS-210 -12BS-210 -10BS-210 -08BS-210 -06BS-210 ▼ -04BS-210	39-31-0240 ▲ -0220 -0200 -0180 -0160 -0140 -0120 -0100 -0080 -0060 ▼ -0040	5566-24B-210 ▲ -22B-210 -20B-210 -18B-210 -16B-210 -14B-210 -12B-210 -10B-210 -08B-210 -06B-210 ▼ -04B-210	39-30-6244 ▲ -6224 -6204 -6184 -6164 -6144 -6124 -6104 -6084 -6064 ▼ -6044	5566-24APBS-210 ▲ -22APBS-210 -20APBS-210 -18APBS-210 -16APBS-210 -14APBS-210 -12APBS-210 -10APBS-210 -08APBS-210 -06APBS-210 ▼ -04APBS-210	24 22 20 18 16 14 12 10 8 6 4 2
E	EDP NO.	ENG. NO.	EDP NO.	ENG. NO.	EDP NO.	ENG. NO.	EDP NO.	ENG. NO.	EDP NO.	ENG. NO.	CKT. SIZE
	5566-NBGS2-210		5566-NBGS-210		5566-NBS-210		5566-NB-210		5566-NAPBS-210		
	39-30-9246 ▲ -9226 -9206 -9186 -9166 -9146 -9126 -9106 -9086 -9066 ▼ -9046	5566-24BGS2 ▲ -22BGS2 -20BGS2 -18BGS2 -16BGS2 -14BGS2 -12BGS2 -10BGS2 -08BGS2 -06BGS2 ▼ -04BGS2	39-31-0247 ▲ -0227 -0207 -0187 -0167 -0147 -0127 -0107 -0087 -0067 ▼ -0047	5566-24BGS ▲ -22BGS -20BGS -18BGS -16BGS -14BGS -12BGS -10BGS -08BGS -06BGS ▼ -04BGS	39-31-0241 ▲ -0221 -0201 -0181 -0161 -0141 -0121 -0101 -0081 -0061 ▼ -0041	5566-24BS ▲ -22BS -20BS -18BS -16BS -14BS -12BS -10BS -08BS -06BS ▼ -04BS	39-29-3246 ▲ -3226 -3206 -3186 -3166 -3146 -3126 -3106 -3086 -3066 ▼ -3046	5566-24B ▲ -22B -20B -18B -16B -14B -12B -10B -08B -06B ▼ -04B	39-30-6243 ▲ -6223 -6203 -6183 -6163 -6143 -6123 -6103 -6083 -6063 ▼ -6043	5566-24APBS ▲ -22APBS -20APBS -18APBS -16APBS -14APBS -12APBS -10APBS -08APBS -06APBS ▼ -04APBS	24 22 20 18 16 14 12 10 8 6 4 2
D	EDP NO.	ENG. NO.	EDP NO.	ENG. NO.	EDP NO.	ENG. NO.	EDP NO.	ENG. NO.	EDP NO.	ENG. NO.	CKT. SIZE
	5566-NBGS2		5566-NBGS		5566-NBS		5566-NB		5566-NAPBS		
C	39-30-9026 ▲ -9225 -9205 -9185 -9165 -9145 -9125 -9105 -9085 -9065 ▼ -9045	5566-02BGS2 ▲ -22BGS2 -20BGS2 -18BGS2 -16BGS2 -14BGS2 -12BGS2 -10BGS2 -08BGS2 -06BGS2 ▼ -04BGS2	39-31-0027 ▲ -0227 -0207 -0187 -0167 -0147 -0127 -0107 -0087 -0067 ▼ -0047	5566-02BGS ▲ -22BGS -20BGS -18BGS -16BGS -14BGS -12BGS -10BGS -08BGS -06BGS ▼ -04BGS	39-31-0021 ▲ -0221 -0201 -0181 -0161 -0141 -0121 -0101 -0081 -0061 ▼ -0041	5566-02BS ▲ -22BS -20BS -18BS -16BS -14BS -12BS -10BS -08BS -06BS ▼ -04BS	39-29-3026 ▲ -3226 -3206 -3186 -3166 -3146 -3126 -3106 -3086 -3066 ▼ -3046	5566-02B ▲ -22B -20B -18B -16B -14B -12B -10B -08B -06B ▼ -04B	39-30-6023 ▲ -6223 -6203 -6183 -6163 -6143 -6123 -6103 -6083 -6063 ▼ -6043	5566-02APBS ▲ -22APBS -20APBS -18APBS -16APBS -14APBS -12APBS -10APBS -08APBS -06APBS ▼ -04APBS	2 24 22 20 18 16 14 12 10 8 6 4 2
B	EDP NO.	ENG. NO.	EDP NO.	ENG. NO.	EDP NO.	ENG. NO.	EDP NO.	ENG. NO.	EDP NO.	ENG. NO.	CKT. SIZE
	5566-NBGS2		5566-NBGS		5566-NBS		5566-NB		5566-NAPBS		
	39-31-0245 ▲ -0225 -0205 -0185 -0165 -0145 -0125 -0105 -0085 -0065 ▼ -0045	5566-24BPBS ▲ -22BPBS -20BPBS -18BPBS -16BPBS -14BPBS -12BPBS -10BPBS -08BPBS -06BPBS ▼ -04BPBS	39-31-0243 ▲ -0223 -0203 -0183 -0163 -0143 -0123 -0103 -0083 -0063 ▼ -0043	5566-24BPS ▲ -22BPS -20BPS -18BPS -16BPS -14BPS -12BPS -10BPS -08BPS -06BPS ▼ -04BPS	39-31-0023 ▲ -0223 -0203 -0183 -0163 -0143 -0123 -0103 -0083 -0063 ▼ -0043	5566-02BPS ▲ -22BPS -20BPS -18BPS -16BPS -14BPS -12BPS -10BPS -08BPS -06BPS ▼ -04BPS	39-31-0026 ▲ -0226 -0206 -0186 -0166 -0146 -0126 -0106 -0086 -0066 ▼ -0046	5566-02BPS-210 ▲ -22BPS-210 -20BPS-210 -18BPS-210 -16BPS-210 -14BPS-210 -12BPS-210 -10BPS-210 -08BPS-210 -06BPS-210 ▼ -04BPS-210	39-31-0024 ▲ -0224 -0204 -0184 -0164 -0144 -0124 -0104 -0084 -0064 ▼ -0044	5566-02APBS-210 ▲ -22APBS-210 -20APBS-210 -18APBS-210 -16APBS-210 -14APBS-210 -12APBS-210 -10APBS-210 -08APBS-210 -06APBS-210 ▼ -04APBS-210	2 24 22 20 18 16 14 12 10 8 6 4 2
A	EDP NO.	ENG. NO.	EDP NO.	ENG. NO.	EDP NO.	ENG. NO.	EDP NO.	ENG. NO.	EDP NO.	ENG. NO.	CKT. SIZE
	5566-NBPBS		5566-NBPB		5566-NBPBS-210		5566-NBPB-210		5566-NBPBS-210		
	39-31-0025 ▲ -0225 -0205 -0185 -0165 -0145 -0125 -0105 -0085 -0065 ▼ -0045	5566-02BPBS ▲ -22BPBS -20BPBS -18BPBS -16BPBS -14BPBS -12BPBS -10BPBS -08BPBS -06BPBS ▼ -04BPBS	39-31-0023 ▲ -0223 -0203 -0183 -0163 -0143 -0123 -0103 -0083 -0063 ▼ -0043	5566-02BPS ▲ -22BPS -20BPS -18BPS -16BPS -14BPS -12BPS -10BPS -08BPS -06BPS ▼ -04BPS	39-31-0023 ▲ -0223 -0203 -0183 -0163 -0143 -0123 -0103 -0083 -0063 ▼ -0043	5566-02BPS ▲ -22BPS -20BPS -18BPS -16BPS -14BPS -12BPS -10BPS -08BPS -06BPS ▼ -04BPS	39-31-0026 ▲ -0226 -0206 -0186 -0166 -0146 -0126 -0106 -0086 -0066 ▼ -0046	5566-02BPS-210 ▲ -22BPS-210 -20BPS-210 -18BPS-210 -16BPS-210 -14BPS-210 -12BPS-210 -10BPS-210 -08BPS-210 -06BPS-210 ▼ -04BPS-210	39-31-0024 ▲ -0224 -0204 -0184 -0164 -0144 -0124 -0104 -0084 -0064 ▼ -0044	5566-02APBS-210 ▲ -22APBS-210 -20APBS-210 -18APBS-210 -16APBS-210 -14APBS-210 -12APBS-210 -10APBS-210 -08APBS-210 -06APBS-210 ▼ -04APBS-210	2 24 22 20 18 16 14 12 10 8 6 4 2

PARTS WITH DRAIN HOLES

SEE SHEET 1 EC NO: UCP2010-2614 DRAWN: JAGUILAR 2010/04/09 CHYK: BELL 94/04/20 APPROV: SMITH 2010/04/14 REV: L3	GENERAL TOLERANCES (UNLESS SPECIFIED)		DIMENSION STYLE IN/MM		SCALE ---	DESIGN UNITS METRIC	THIRD ANGLE PROJECTION
	10 UNDER	± ---	DRAWN BY H. HIRAMOTO	DATE 89/04/03	TITLE		
	10 OVER 30 UNDER	± ---	CHECKED BY M. FUKUSHIMA	DATE 94/04/20	NEW MINI FIT CONNECTOR HEADER HOUSING ASS'Y - LEAD FREE-		
	30 OVER	± ---	APPROVED BY M. FUKUSHIMA	DATE 94/04/20			
ANGULAR ± --- °		MATERIAL NO. SEE TABLE		DOCUMENT NO. SD-5566-002		SHEET NO. 3 OF 6	
DRAFT WHERE APPLICABLE MUST REMAIN WITHIN DIMENSIONS		THIS DRAWING CONTAINS INFORMATION THAT IS PROPRIETARY TO MOLEX INCORPORATED AND SHOULD NOT BE USED WITHOUT WRITTEN PERMISSION					