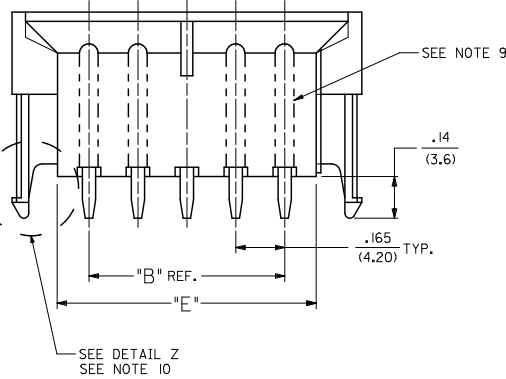
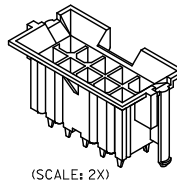
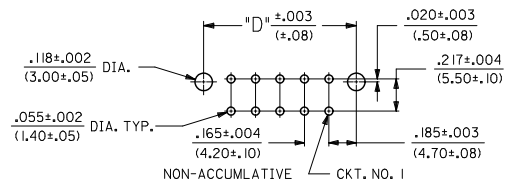


CIRCUIT SIZE	DIM. 'A'	DIM. 'B'	DIM. 'C'	DIM. 'D'	DIM. 'E'
2	.520 (13.20)	—	.425 (10.80)	.370 (9.40)	.21 (5.4)
4	.685 (17.40)	.17 (4.2)	.590 (15.00)	.535 (13.60)	.38 (9.6)
6	.850 (21.60)	.33 (8.4)	.756 (19.20)	.701 (17.80)	.54 (13.8)
8	1.016 (25.80)	.50 (12.6)	.921 (23.40)	.866 (22.00)	.71 (18.0)
10	1.181 (30.00)	.66 (16.8)	1.087 (27.60)	1.031 (26.20)	.87 (22.2)
12	1.346 (34.20)	.83 (21.0)	1.252 (31.80)	1.197 (30.40)	1.04 (26.4)
14	1.512 (38.40)	.99 (25.2)	1.417 (36.00)	1.362 (34.60)	1.20 (30.6)
16	1.677 (42.60)	1.16 (29.4)	1.583 (40.20)	1.528 (38.80)	1.37 (34.8)
18	1.843 (46.80)	1.32 (33.6)	1.748 (44.40)	1.693 (43.00)	1.54 (39.0)
20	2.008 (51.00)	1.49 (37.8)	1.913 (48.60)	1.858 (47.20)	1.70 (43.2)
22	2.173 (55.20)	1.65 (42.0)	2.079 (52.80)	2.024 (51.40)	1.87 (47.4)
24	2.339 (59.40)	1.82 (46.2)	2.244 (57.00)	2.189 (55.60)	2.03 (51.6)



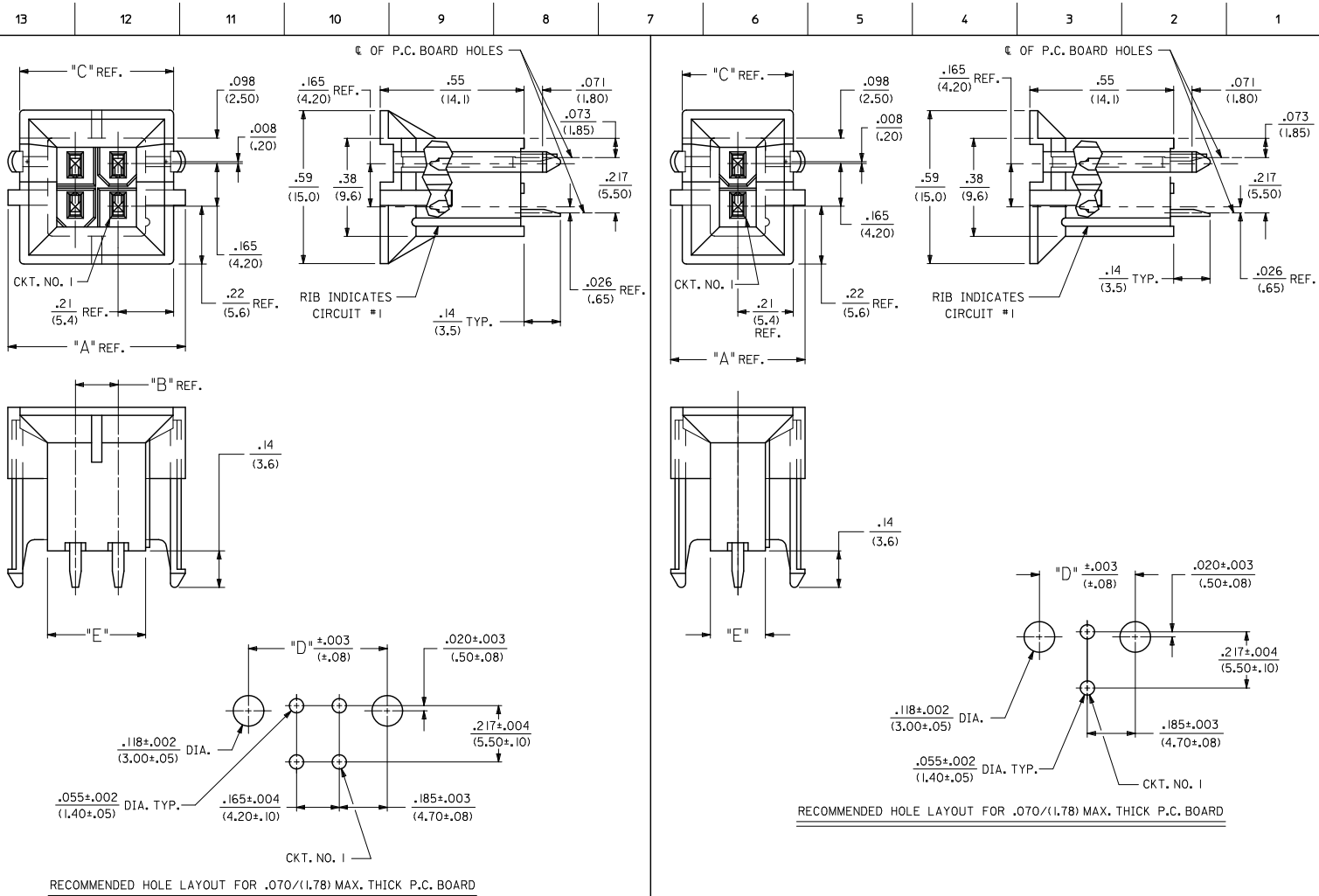
**LEGEND:**  
 A - 42440 - \* \* \*  
 BASE NUMBER  
 CIRCUIT SIZE (02-24)  
 PLATING (SEE NOTE 2.)  
 HOUSING MAT'L. & OPTIONS (SEE NOTE 1.)



RECOMMENDED HOLE LAYOUT FOR .070/(1.78) MAX. THICK P.C. BOARD  
 (SCALE: 2X)

---22, ---42	42474---21, 5556-PBGS*P	94V-0	PHOS. BRZ.	GOLD
---12, ---32	42474---11, 5556-PBGS*P	94V-2		
---22, ---42, ---23, ---43	42474---21, 5556-GS*P	94V-0	BRASS	GOLD
---12, ---32, ---13, ---33	42474---11, 5556-GS*P	94V-2		
---21, ---41	42474---21, 5556-PBS*P	94V-0	PHOS. BRZ.	TIN
---11, ---31	42474---11, 5556-PBS*P	94V-2		
---21, ---41	42474---21, 5556-S*P	94V-0	BRASS	TIN
---11, ---31	42474---11, 5556-S*P	94V-2		
---22, ---42	A-42385---D2, ---D4	94V-0	PHOS. BRZ.	GOLD
---12, ---32	A-42385---C2, ---C4	94V-2		
---22, ---42, ---23, ---43	A-42385---B2, ---B4	94V-0	BRASS	GOLD
---12, ---32, ---13, ---33	A-42385---A2, ---A4	94V-2		
---21, ---41	A-42385---D1	94V-0	PHOS. BRZ.	TIN
---11, ---31	A-42385---C1	94V-2		
---21, ---41	A-42385---B1	94V-0	BRASS	TIN
---11, ---31	A-42385---A1	94V-2		
VERT. HEADER A-42440		HSG. MAT'L.	TERM. MAT'L.	PLATING
MATING CONNECTOR		MATING CONNECTOR FEATURES		

<b>RMV LEAD FREE PN</b> EC NO. UCP2010-1524 DRAWN: JAGUILAR 2011/01/11 CHKD: BELL 2011/01/11 APPROV: SMITH 2011/02/11	<b>QUALITY SYMBOLS</b> 	<b>GENERAL TOLERANCES (UNLESS SPECIFIED)</b>		<b>DIMENSION STYLE</b> IN/MM		<b>SCALE</b> 4:1	<b>DESIGN UNITS</b> METRIC	<b>THIRD ANGLE PROJECTION</b>
		4 PLACES ± .010 ± .010 3 PLACES ± .010 ± .010 2 PLACES ± .025 ± .015 1 PLACE ± 0.38 ± .010 ANGULAR ± 5°	DRAWN BY: GEP CHECKED BY: RJF APPROVED BY: FSMITH DATE: 1989/04/06 DATE: 1989/04/06 DATE: 2011/02/11	<b>TITLE</b> MINI-FIT B.M.I. VERTICAL HEADER ASSY WITH DRAIN HOLE OPTION MOLEX INCORPORATED		<b>MATERIAL NO.</b> SDA-42440-****	<b>DOCUMENT NO.</b> SDA-42440-****	<b>SHEET NO.</b> 1 OF 5
<b>DRAFT WHERE APPLICABLE MUST REMAIN WITHIN DIMENSIONS</b>		<b>SEE CHART</b>		<b>THIS DRAWING CONTAINS INFORMATION THAT IS PROPRIETARY TO MOLEX INCORPORATED AND SHOULD NOT BE USED WITHOUT WRITTEN PERMISSION</b>				



<b>SEE SHEET 1</b> EC NO: UCP2010-1524 DRWN: JAGUILAR 2011/01/11 CHKD: BELL 2011/01/11 APPR: SMITH 2011/02/11	QUALITY SYMBOLS 	GENERAL TOLERANCES (UNLESS SPECIFIED): mm INCH		DIMENSION STYLE IN/MM		SCALE 1:1	DESIGN UNITS METRIC	THIRD ANGLE PROJECTION		
		4 PLACES ± .010 ± .010	3 PLACES ± .015 ± .015	2 PLACES ± .025 ± .015	1 PLACE ± 0.38 ± .015	DRAWN BY GEP 1989/04/06	DATE 2011/02/11	TITLE MINI-FIT B.M.I. VERTICAL HEADER ASSY WITH DRAIN HOLE OPTION		
		ANGULAR ± 5°		DRAFT WHERE APPLICABLE MUST REMAIN WITHIN DIMENSIONS		CHECKED BY RJF 1989/04/06	APPROVED BY FSMITH 2011/02/11	MOLEX INCORPORATED		
		MATERIAL NO. SEE CHART		DOCUMENT NO. SDA-42440-****		SHEET NO. 2 OF 5		THIS DRAWING CONTAINS INFORMATION THAT IS PROPRIETARY TO MOLEX INCORPORATED AND SHOULD NOT BE USED WITHOUT WRITTEN PERMISSION		

13 12 11 10 9 8 7 6 5 4 3 2 1

- NOTES:
- 1) MATERIAL:  
HOUSING MATERIAL AND OPTIONS:  
1 = NYLON 6/6, UL 94V-2, COLOR: NATURAL, WITHOUT DRAIN HOLES  
2 = NYLON 6/6, UL 94V-0, COLOR: NATURAL, WITHOUT DRAIN HOLES  
3 = NYLON 6/6, UL 94V-2, COLOR: NATURAL, WITH DRAIN HOLES  
4 = NYLON 6/6, UL 94V-0, COLOR: NATURAL, WITH DRAIN HOLES  
TERMINALS: BRASS
  - 2) TERMINAL PLATING:  
S = .000100/(0.00254) MIN. BRIGHT TIN OVER .000050/(0.00127) MIN. NICKEL  
GS = .000030/(0.00076) MIN. SELECT GOLD AND .000100/(0.00254) MIN.  
SELECT MATTE TIN OVER .000050/(0.00127) MIN. NICKEL OVERALL  
GS3 = .000050/(0.00127) MIN. SELECT GOLD AND .000100/(0.00254) MIN.  
SELECT MATTE TIN OVER .000050/(0.00127) MIN. NICKEL OVERALL
  - 3) PRODUCT SPECIFICATION AND PROCESSING PARAMETERS: PS-5556-002
  - 4) PACKAGING: SEE CHARTS
  - 5) 6-24 CIRCUIT PARTS MATE WITH MINI-FIT JR. RECEPTACLES #5557 AND HEADERS #42385 AND #42474, 2 AND 4 CIRCUIT PARTS MATE WITH 42385 AND 42474 HEADERS ONLY.
  - 6) PART ALLOWS FOR UP TO .100/(2.54) MISALIGNMENT WITH MATING RECEPTACLE IN ANY DIRECTION. SEE MATING CONNECTOR DRAWINGS FOR SPECIFIC ALLOWANCES.
  - 7) CONNECTOR IS NOT DESIGNED FOR CURRENT SHARING.
  - 8) CONNECTOR ASSEMBLIES ARE NOT BE MATED OR UNMATED WHILE CIRCUITS ARE LIVE.
  - 9) OPTIONAL RIBS MAY BE FOUND ON PARTS MANUFACTURED AFTER 08/11/1997. RIB LOCATION IS DETERMINED BY MOLD DESIGN FOR MANUFACTURING EASE AND THE LOCATION DOES NOT AFFECT PART FUNCTION OR PERFORMANCE. LOCATION OF RIBS MAY VARY ON PARTS WITHIN MAUFACTURING LOT OR SHIPMENT. THIS DRAWING SHOWS TYPICAL RIB LOCATIONS.
  - 10) PARTS MANUFACTURED AFTER 8/15/1997 MAY HAVE REVISED LOCK PEG.
  - 11) PART CONFORMS TO CLASS "B" REQUIREMENTS OF "COSMETIC SPECIFICATION" PS-45499-002.
  - 12) CIRCUIT PARTS HAVE A SLOT BETWEEN CIRCUITS 7 AND 8.

SEE SHEET 1 EC NO: UCP2010-1524 DRWN: JAGUILAR 2011/01/11 CHKD: BELL 2011/01/11 APPR: SMITH 2011/02/11	Q2	QUALITY SYMBOLS ∇=0 ∇=0 ∇=0	GENERAL TOLERANCES (UNLESS SPECIFIED)		DIMENSION STYLE IN/MM		SCALE 1:1	DESIGN UNITS METRIC	THIRD ANGLE PROJECTION		
			4 PLACES ±.010 ±.010	mm	INCH	DRAWN BY GEP	DATE 1989/04/06	TITLE MINI-FIT B.M.I. VERTICAL HEADER ASSY WITH DRAIN HOLE OPTION			
			3 PLACES ±.010 ±.010			CHECKED BY RJF	DATE 1989/04/06	MOLEX INCORPORATED			
			2 PLACES ±0.25 ±.015			APPROVED BY FSMITH	DATE 2011/02/11	MATERIAL NO. SDA-42440-**** DOCUMENT NO. SHEET NO. 3 OF 5			
1 PLACE ±0.38 ±.015			ANGULAR ± 5 °		DRAFT WHERE APPLICABLE MUST REMAIN WITHIN DIMENSIONS		SIZE C THIS DRAWING CONTAINS INFORMATION THAT IS PROPRIETARY TO MOLEX INCORPORATED AND SHOULD NOT BE USED WITHOUT WRITTEN PERMISSION				

12 11 10 9 8 7 6 5 4 3 2 1



	13	12	11	10	9	8	7	6	5	4	3	2	1		
PLATING:	50 M.I. SELECT GOLD (SEE NOTE 2 OPTION 'GS3')			PLATING:	50 M.I. SELECT GOLD (SEE NOTE 2 OPTION 'GS3')			PLATING:				PLATING:			
DRAINS:	WITHOUT DRAIN HOLES			DRAINS:	WITHOUT DRAIN HOLES			DRAINS:				DRAINS:			
PEGS:	WITH PEGS			PEGS:	WITH PEGS			PEGS:				PEGS:			
MAT'L:	94V-2 [NATURAL]			MAT'L:	94V-0 [NATURAL]			MAT'L:				MAT'L:			
PACKAGING:	TRAY PER PK-42440-001			PACKAGING:	TRAY PER PK-42440-001			PACKAGING:				PACKAGING:			
PART NO.	ENG NO.		CKTS	PART NO.	ENG NO.		CKTS	PART NO.	ENG NO.		CKTS	PART NO.	ENG NO.		CKTS
NO EDP	A-42440-0213	-	2	NO EDP	A-42440-0223	-	2	NO EDP	-	-	2	NO EDP	-	-	2
NO EDP	A-42440-0413	-	4	NO EDP	A-42440-0423	-	4	NO EDP	-	-	4	NO EDP	-	-	4
NO EDP	A-42440-0613	-	6	NO EDP	A-42440-0623	-	6	NO EDP	-	-	6	NO EDP	-	-	6
NO EDP	A-42440-0813	-	8	NO EDP	A-42440-0823	-	8	NO EDP	-	-	8	NO EDP	-	-	8
NO EDP	A-42440-1013	-	10	NO EDP	A-42440-1023	-	10	NO EDP	-	-	10	NO EDP	-	-	10
NO EDP	A-42440-1213	-	12	NO EDP	A-42440-1223	-	12	NO EDP	-	-	12	NO EDP	-	-	12
NO EDP	A-42440-1413	-	14	NO EDP	A-42440-1423	-	14	NO EDP	-	-	14	NO EDP	-	-	14
NO EDP	A-42440-1613	-	16	NO EDP	A-42440-1623	-	16	NO EDP	-	-	16	NO EDP	-	-	16
NO EDP	A-42440-1813	-	18	NO EDP	A-42440-1823	-	18	NO EDP	-	-	18	NO EDP	-	-	18
NO EDP	A-42440-2013	-	20	NO EDP	A-42440-2023	-	20	NO EDP	-	-	20	NO EDP	-	-	20
NO EDP	A-42440-2213	-	22	NO EDP	A-42440-2223	-	22	NO EDP	-	-	22	NO EDP	-	-	22
NO EDP	A-42440-2413	-	24	NO EDP	A-42440-2423	-	24	NO EDP	-	-	24	NO EDP	-	-	24

<table border="1" style="width: 100%; border-collapse: collapse;"> <tr> <td rowspan="4" style="width: 15%; vertical-align: top;"> <b>SEE SHEET 1</b>            EC NO: UCP2010-1524            DRAWN: JAGUILAR 2011/01/11            CHKD: BELL 2011/01/11            APPR: SMITH 2011/02/11         </td> <td rowspan="4" style="width: 10%; vertical-align: top;">           QUALITY SYMBOLS  </td> <td colspan="2" style="width: 20%;">GENERAL TOLERANCES (UNLESS SPECIFIED)</td> <td colspan="2" style="width: 15%;">DIMENSION STYLE IN/MM</td> <td style="width: 10%;">SCALE 1:1</td> <td style="width: 10%;">DESIGN UNITS METRIC</td> <td colspan="2" style="width: 15%;">THIRD ANGLE PROJECTION</td> </tr> <tr> <td style="width: 5%;">4 PLACES</td> <td style="width: 5%;">±</td> <td style="width: 5%;">---</td> <td style="width: 5%;">±</td> <td style="width: 5%;">---</td> <td style="width: 5%;">INCH</td> <td colspan="2">DRAWN BY GEP</td> <td colspan="2">DATE 1989/04/06</td> </tr> <tr> <td>3 PLACES</td> <td>±</td> <td>---</td> <td>±</td> <td>.010</td> <td colspan="2">CHECKED BY RJF</td> <td colspan="2">DATE 1989/04/06</td> <td colspan="2" rowspan="2" style="text-align: center;"> <b>MINI-FIT B.M.I.            VERTICAL HEADER ASSY            WITH DRAIN HOLE OPTION</b> </td> </tr> <tr> <td>2 PLACES</td> <td>±</td> <td>0.25</td> <td>±</td> <td>.015</td> <td colspan="2">APPROVED BY FSMITH</td> <td colspan="2">DATE 2011/02/11</td> </tr> <tr> <td>1 PLACE</td> <td>±</td> <td>0.38</td> <td>±</td> <td>---</td> <td colspan="2">ANGULAR ± 5 °</td> <td colspan="2" style="text-align: center;"> <b>MOLEX INCORPORATED</b> </td> <td colspan="2" style="text-align: center;">           MATERIAL NO. SDA-42440-****            DOCUMENT NO.         </td> </tr> <tr> <td colspan="4" style="text-align: center;">DRAFT WHERE APPLICABLE MUST REMAIN WITHIN DIMENSIONS</td> <td colspan="2" style="text-align: center;">SEE CHART</td> <td colspan="2" style="text-align: center;">THIS DRAWING CONTAINS INFORMATION THAT IS PROPRIETARY TO MOLEX INCORPORATED AND SHOULD NOT BE USED WITHOUT WRITTEN PERMISSION</td> <td colspan="2" style="text-align: center;">SHEET NO. 5 OF 5</td> </tr> </table>														<b>SEE SHEET 1</b> EC NO: UCP2010-1524 DRAWN: JAGUILAR 2011/01/11 CHKD: BELL 2011/01/11 APPR: SMITH 2011/02/11	QUALITY SYMBOLS 	GENERAL TOLERANCES (UNLESS SPECIFIED)		DIMENSION STYLE IN/MM		SCALE 1:1	DESIGN UNITS METRIC	THIRD ANGLE PROJECTION		4 PLACES	±	---	±	---	INCH	DRAWN BY GEP		DATE 1989/04/06		3 PLACES	±	---	±	.010	CHECKED BY RJF		DATE 1989/04/06		<b>MINI-FIT B.M.I.            VERTICAL HEADER ASSY            WITH DRAIN HOLE OPTION</b>		2 PLACES	±	0.25	±	.015	APPROVED BY FSMITH		DATE 2011/02/11		1 PLACE	±	0.38	±	---	ANGULAR ± 5 °		<b>MOLEX INCORPORATED</b>		MATERIAL NO. SDA-42440-**** DOCUMENT NO.		DRAFT WHERE APPLICABLE MUST REMAIN WITHIN DIMENSIONS				SEE CHART		THIS DRAWING CONTAINS INFORMATION THAT IS PROPRIETARY TO MOLEX INCORPORATED AND SHOULD NOT BE USED WITHOUT WRITTEN PERMISSION		SHEET NO. 5 OF 5	
<b>SEE SHEET 1</b> EC NO: UCP2010-1524 DRAWN: JAGUILAR 2011/01/11 CHKD: BELL 2011/01/11 APPR: SMITH 2011/02/11	QUALITY SYMBOLS 	GENERAL TOLERANCES (UNLESS SPECIFIED)		DIMENSION STYLE IN/MM		SCALE 1:1	DESIGN UNITS METRIC	THIRD ANGLE PROJECTION																																																																		
		4 PLACES	±	---	±	---	INCH	DRAWN BY GEP		DATE 1989/04/06																																																																
		3 PLACES	±	---	±	.010	CHECKED BY RJF		DATE 1989/04/06		<b>MINI-FIT B.M.I.            VERTICAL HEADER ASSY            WITH DRAIN HOLE OPTION</b>																																																															
		2 PLACES	±	0.25	±	.015	APPROVED BY FSMITH		DATE 2011/02/11																																																																	
1 PLACE	±	0.38	±	---	ANGULAR ± 5 °		<b>MOLEX INCORPORATED</b>		MATERIAL NO. SDA-42440-**** DOCUMENT NO.																																																																	
DRAFT WHERE APPLICABLE MUST REMAIN WITHIN DIMENSIONS				SEE CHART		THIS DRAWING CONTAINS INFORMATION THAT IS PROPRIETARY TO MOLEX INCORPORATED AND SHOULD NOT BE USED WITHOUT WRITTEN PERMISSION		SHEET NO. 5 OF 5																																																																		

1b_frame_C.P.A.M.T Rev. F 2009/06/18	12	11	10	9	8	7	6	5	4	3	2	1
---	----	----	----	---	---	---	---	---	---	---	---	---