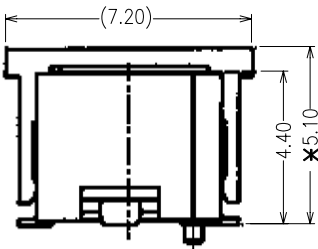
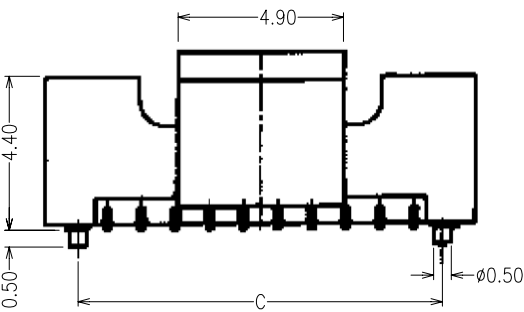


SPECIFICATIONS:
MATERIAL:-
 HOUSING: HIGH TEMP THERMOPLASTIC UL 94V-0
 CAP: HIGH TEMP THERMOPLASTIC UL 94V-0
 PIN: HIGH STRENGTH PHOSPHOR BRONZE
 TAB: HIGH STRENGTH COPPER ALLOYS
FINISH:-
 PIN: BASE PLATING NICKEL
 CONTACT POINT: SN OVER NICKEL
 SOLDER TAIL: SN OVER NICKEL
 TAB: BASE PLATING NICKEL, SN OVER NICKEL
ELECTRICAL:-
 CURRENT RATING: 1 AMP AC, DC(AWG#28)
 WORKING VOLTAGE: 50V AC, DC
 DIELECTRIC WITHSTANDING VOLTAGE: 500 V AC RMS FOR 1 MINUTE
 CONTACT RESISTANCE: 20 mΩ MAX.
 INSULATION RESISTANCE: 100 MΩ MIN.
ENVIRONMENTAL:-
 TEMPERATURE RANGE: -25°C TO +85°C



TOTAL NO. OF CONTACTS	A	B	C
18	11.60	8.00	9.70
20	12.60	9.00	10.70
30	17.60	14.00	15.70
40	22.60	19.00	20.70
50	27.60	24.00	25.70

NAME	ISS.	DATE	C/NOTE
Allan	2	29.06.07	A056
Allan	1	01.08.06	-

APPROVED: *[Signature]*
 CHECKED:
 DRAWN: Allan

TOLERANCES

DIMENSIONS	ANGLES
X.X = ±0.38mm	X = ±5°
X.XX = ±0.25mm	X.X = ±3°

NOTES: ALL DIMENSIONS AND NOTES MARKED * ARE CRITICAL AND MUST BE CHECKED ACCORDANCE QUALITY DOC. Q1-02A

ORDER CODE
M40-302 XX 46
 NO. OF WAYS PER ROW

CUSTOMER REF.:
 ASSEMBLY DRG:

HARWIN

HARWIN USA TEL: 603 893 5376 FAX: 603 893 5396 mis@harwin.com	HARWIN Europe (UK) TEL: 023 9231 4545 FAX: 023 9231 4590 mis@harwin.co.uk	HARWIN Asia TEL: +65 6 779 4909 FAX: +65 6 779 3868 mis@harwin.com.sg
--	--	--

THIS DRAWING AND ANY INFORMATION OR DESCRIPTIVE MATTER SET OUT HEREON ARE CONFIDENTIAL AND COPYRIGHT PROPERTY OF THE HARWIN GROUP AND MUST NOT BE DISCLOSED, LOANED, COPIED OR USED FOR MANUFACTURING, TENDERING OR FOR ANY OTHER PURPOSE WITHOUT THEIR WRITTEN PERMISSION.

TOLERANCES
 X = ±1mm
 X.X = ±0.25mm
 X.XX = ±0.10mm
 X.XXX = ±0.01mm
 ANGLES = ±5°
 UNLESS STATED

MATERIAL: SEE NOTES
FINISH: SEE NOTES
S/AREA: mm²

TITLE: HEADER P=1.00mm D/R SMT TYPE
DRAWING NUMBER: M40-302 XX 46
 SHT 1 OF 1