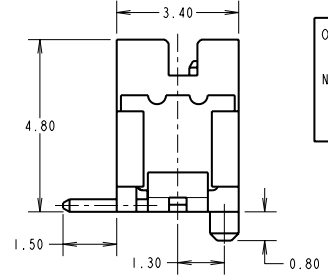
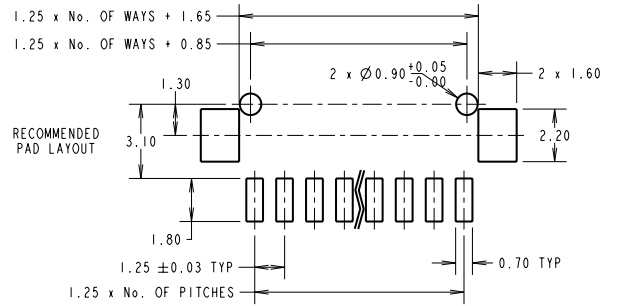
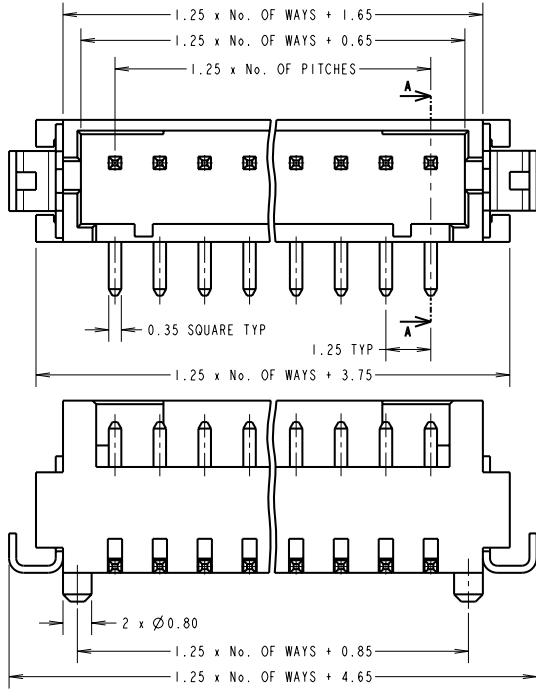
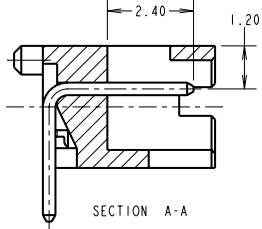


Customer Information Sheet

DRAWING No.: M30-600XX46 SHEET 2 OF 2 IF IN DOUBT - ASK (C) NOT TO SCALE THIRD ANGLE PROJECTION ALL DIMENSIONS IN mm

SPECIFICATIONS:
MATERIAL:
 MOULDING = POLYAMIDE 46 NATURAL, UL94V-0
 CONTACT = BRASS
 RETAINER = PHOSPHOR BRONZE
FINISH:
 CONTACT & RETAINER = 100% TIN
ELECTRICAL:
 RATED CURRENT = 1A AC/DC
 RATED VOLTAGE = 150V AC/DC
 DIELECTRIC STRENGTH = 500V AC
 INSULATION RESISTANCE = 1000 MEGOHMS MIN
 DIELECTRIC WITHSTANDING VOLTAGE = 500V AC
ENVIRONMENTAL:
 TEMPERATURE RANGE = -55° TO +85°C
PACKING :TUBE
 FOR COMPLETE SPECIFICATIONS,
 SEE COMPONENT SPECIFICATION
 C025XX (LATEST ISSUE)



ORDER CODE:
M30-600XX46
 No. OF WAYS
 02 TO 15
 FINISH:
 46 = 100% TIN

NOTES:
 1. ALL TOLERANCES ARE ±0.30 UNLESS OTHERWISE STATED.
 2. MATES WITH M30-1000046 CRIMP CONTACTS AND M30-110XX00 CRIMP MOULDING.
 3. COPLANARITY OF CONTACTS AND RETAINER TO BE 0.1mm MAX.

CP	9	21.12.09	10496
NAME	ISS.	DATE	C/NOTE
APPROVED: C.PENROSE			
CHECKED: R.ADDE			
DRAWN: W.J.BOURNE			
CUSTOMER REF.:			
ASSEMBLY DRG:			

HARWIN			THIS DRAWING AND ANY INFORMATION OR DESCRIPTIVE MATTER SET OUT HEREON ARE CONFIDENTIAL AND COPYRIGHT PROPERTY OF THE HARWIN GROUP AND MUST NOT BE DISCLOSED, LOANED, COPIED OR USED FOR MANUFACTURING, TENDERING OR FOR ANY OTHER PURPOSE WITHOUT THEIR WRITTEN PERMISSION.	TOLERANCES X = ±1mm X.X = ±0.25mm X.XX = ±0.10mm X.XXX = ±0.01mm ANGLES = ±5° UNLESS STATED	MATERIAL: SEE ABOVE	TITLE: 1.25mm PITCH SIL SMT BOARD MOUNT CONNECTOR
HARWIN USA TEL: 603 893 5376 FAX: 603 893 5396 mis@harwin.com	HARWIN Europe (UK) TEL: 023 9231 4545 FAX: 023 9231 4590 mis@harwin.co.uk	HARWIN Asia TEL: +65 6 779 4909 FAX: +65 6 779 3868 mis@harwin.com.sg		FINISH: SEE ABOVE	DRAWING NUMBER: M30-600XX46	SHT 2 OF 2