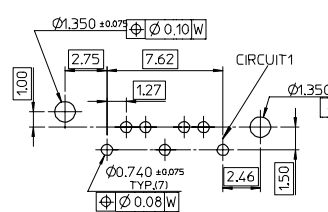
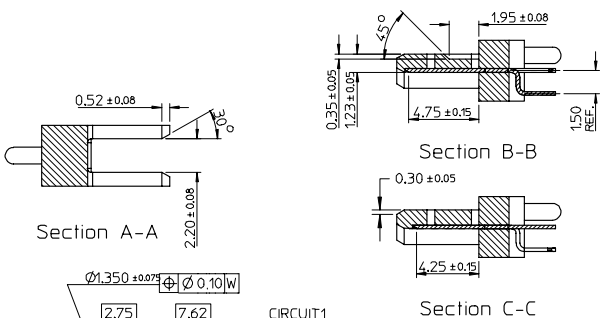
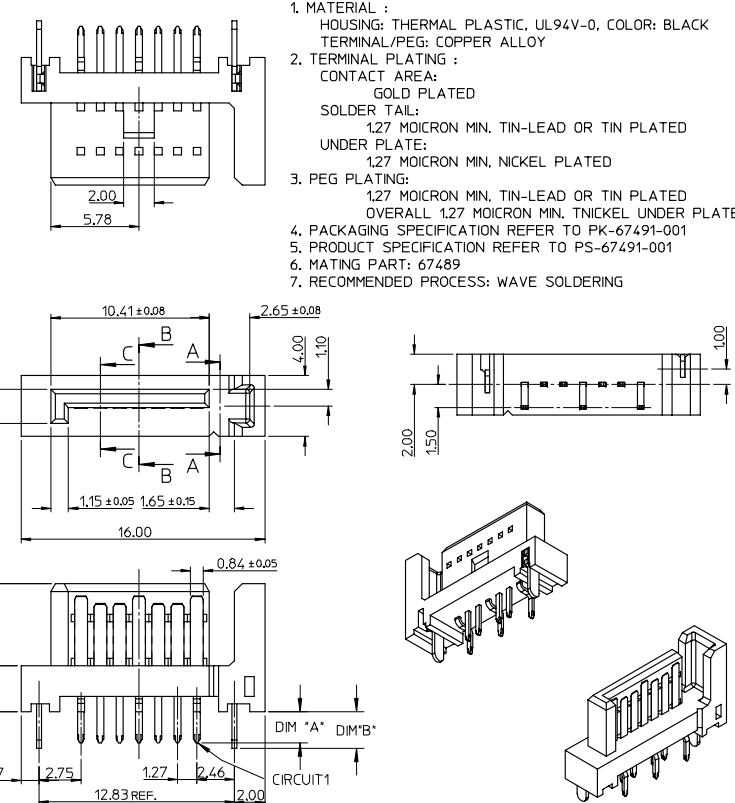


	10	9	8	7	6	5	4	3	2	1
	P/N	CONTACT PLATING TYPE	*A*	*B*	PCB THICKNESS	SOLDERING PLATE				
F	67491-0030	GOLD FLASH	2.05	2.40	1.60	TIN-LEAD				
	67491-0031	0.76 MICRON GOLD PLATED								
	67491-0032	0.38 MICRON GOLD PLATED								
	67491-0035	GOLD FLASH								
	67491-0036	0.76 MICRON GOLD PLATED								
E	67491-0037	0.38 MICRON GOLD PLATED	2.35	2.40	2.00	PURE TIN				
	67491-0038	GOLD FLASH								
	67491-0039	0.76 MICRON GOLD PLATED								
	67491-0040	0.38 MICRON GOLD PLATED								
	67491-1030	GOLD FLASH								
D	67491-1031	0.76 MICRON GOLD PLATED	2.05	2.40	1.60					
	67491-1032	0.38 MICRON GOLD PLATED								
	67491-1035	GOLD FLASH								
	67491-1036	0.76 MICRON GOLD PLATED								
	67491-1037	0.38 MICRON GOLD PLATED								
C	67491-1038	GOLD FLASH	2.35	2.40	2.00					
	67491-1039	0.76 MICRON GOLD PLATED								
	67491-1040	0.38 MICRON GOLD PLATED								

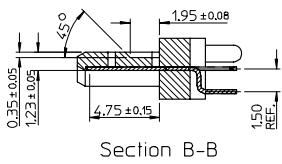
- NOTES:
- MATERIAL :  
HOUSING: THERMAL PLASTIC, UL94V-0, COLOR: BLACK  
TERMINAL/PEG: COPPER ALLOY
  - TERMINAL PLATING :  
CONTACT AREA:  
GOLD PLATED  
SOLDER TAIL:  
1.27 MOICRON MIN. TIN-LEAD OR TIN PLATED  
UNDER PLATE:  
1.27 MOICRON MIN. NICKEL PLATED
  - PEG PLATING:  
1.27 MOICRON MIN. TIN-LEAD OR TIN PLATED  
OVERALL 1.27 MOICRON MIN. TNICKEL UNDER PLATED
  - PACKAGING SPECIFICATION REFER TO PK-67491-001
  - PRODUCT SPECIFICATION REFER TO PS-67491-001
  - MATING PART: 67489
  - RECOMMENDED PROCESS: WAVE SOLDERING



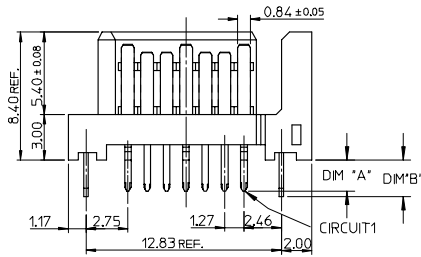
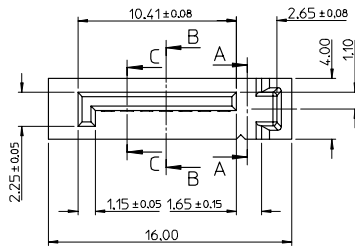
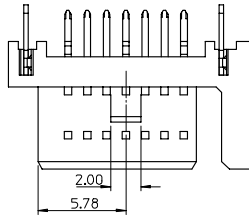
RECOMMENDED P.C.B. LAYOUT t=1.6mm OR 2.0mm

EC NO: SH2005-0049 DRWN:GRMA 2004/09/07 CHKD:GRATE M8004/09/07 APPR: YTYAP 2004/09/10	QUALITY SYMBOLS	GENERAL TOLERANCES (UNLESS SPECIFIED)	SCALE 4:1	DESIGN UNITS METRIC	THIRD ANGLE PROJECTION	REVISE ON CAD ONLY	
	DESCRIPTION 0 0	4 PLACES ± --- ± ---	3 PLACES ± --- ± ---	DIMENSION STYLE MM ONLY		TITLE	
		2 PLACES ± 0.15 ± ---	1 PLACE ± 0.25 ± ---	DRAWN BY RICHARD	DATE '01/06/21	1.27MM HIGH SPEED SERIAL PLUG VERTICLE TYPE	
		ANGULAR ± 3 °		CHECKED BY VINCENT	DATE '01/06/21	MOLEX INCORPORATED	
	DRAFT WHERE APPLICABLE	MUST REMAIN WITHIN DIMENSIONS	APPROVED BY ERIC	DATE '01/06/21	MATERIAL NO. SEE TABLE	DOCUMENT NO. SD-67491-002	
			THIS DRAWING CONTAINS INFORMATION THAT IS PROPRIETARY TO MOLEX INCORPORATED AND SHOULD NOT BE USED WITHOUT WRITTEN PERMISSION		SHEET NO. 1 OF 1	A3	

10 9 8 7 6 5 4 3 2 1

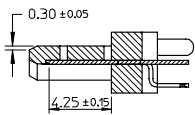


Section B-B

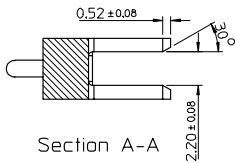


NOTES:

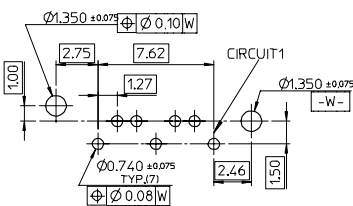
1. MATERIAL :  
 HOUSING: THERMAL PLASTIC, UL94V-0, COLOR: BLACK OR BULE (SEE P/N TABLE)  
 TERMINAL/PEG: COPPER ALLOY
2. TERMINAL PLATING :  
 CONTACT AREA:  
 GOLD PLATED  
 SOLDER TAIL:  
 1.27 MOICRON MIN. TIN-LEAD OR TIN PLATED  
 UNDER PLATE:  
 1.27 MOICRON MIN. NICKEL PLATED
3. PEG PLATING:  
 1.27 MOICRON MIN. TIN-LEAD OR TIN PLATED  
 OVERALL 1.27 MOICRON MIN. NICKEL UNDER PLATED
4. PACKAGING SPECIFICATION REFER TO PK-67491-001
5. PRODUCT SPECIFICATION REFER TO PS-67491-001
6. MATING PART: 67489
7. RECOMMENDED PROCESS: WAVE SOLDERING



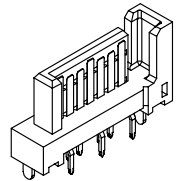
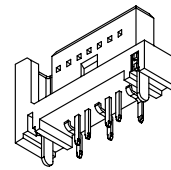
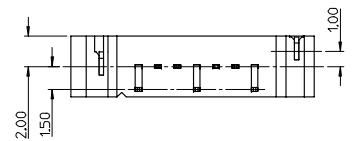
Section C-C



Section A-A



RECOMMENDED P.C.B. LAYOUT t=1.6mm OR 2.0mm.



ADD MATERIAL NUMBER EC NO: SH2006-0007 DRWN: JZENG 2005/08/24 CHKD: GERMA 2005/08/26 APPR: YTYAP 2005/08/29	QUALITY SYMBOLS 0 0	GENERAL TOLERANCES (UNLESS SPECIFIED)	SCALE 4:1	DESIGN UNITS METRIC	THIRD ANGLE PROJECTION	REVISE ON CAD ONLY
			mm	INCH	TITLE	
		4 PLACES ± --- ± ---	DIMENSION STYLE MM ONLY		1.27MM HIGH SPEED SERIAL PLUG VERTICLE TYPE	
		3 PLACES ± --- ± ---	DRAWN BY RICHARD DATE '01/06/21		MOLEX INCORPORATED	
		2 PLACES ± 0.15 ± ---	CHECKED BY VINCENT DATE '01/06/21		MATERIAL NO. SEE TABLE	DOCUMENT NO. SD-67491-002
		1 PLACE ± 0.25 ± ---	APPROVED BY ERIC DATE '01/06/21		SHEET NO. 1 OF 2	
		ANGULAR ± 3 °	THIS DRAWING CONTAINS INFORMATION THAT IS PROPRIETARY TO MOLEX INCORPORATED AND SHOULD NOT BE USED WITHOUT WRITTEN PERMISSION			
		DRAFT WHERE APPLICABLE				
		MUST REMAIN WITHIN DIMENSIONS				

9 8 7 6 5 4 3 2 1

	10	9	8	7	6	5	4	3	2	1
	P/N	CONTACT PLATING TYPE	*A*	*B*	PCB THICKNESS	SOLDERING PLATE	COLOR			
F	67491-0030	GOLD FLASH	2.05	2.40	1.60	TIN-LEAD	BLACK			
	67491-0031	0.76 MICRON GOLD PLATED								
	67491-0032	0.38 MICRON GOLD PLATED								
	67491-0035	GOLD FLASH	2.35	2.40	2.00					
	67491-0036	0.76 MICRON GOLD PLATED								
	67491-0037	0.38 MICRON GOLD PLATED								
E	67491-0038	GOLD FLASH	3.00	3.20	2.40	PURE TIN	BLACK			
	67491-0039	0.76 MICRON GOLD PLATED								
	67491-0040	0.38 MICRON GOLD PLATED								
	67491-1030	GOLD FLASH	2.05	2.40	1.60					
	67491-1031	0.76 MICRON GOLD PLATED								
	67491-1032	0.38 MICRON GOLD PLATED								
D	67491-1035	GOLD FLASH	2.35	2.40	2.00	PURE TIN	BLUE PENTONE NO.293C Δ E<3			
	67491-1036	0.76 MICRON GOLD PLATED								
	67491-1037	0.38 MICRON GOLD PLATED								
	67491-1038	GOLD FLASH	3.00	3.20	2.40					
	67491-1039	0.76 MICRON GOLD PLATED								
	67491-1040	0.38 MICRON GOLD PLATED								
C	67491-2030	GOLD FLASH	2.05	2.40	1.60	PURE TIN	BLUE PENTONE NO.293C Δ E<3			
	67491-2031	0.76 MICRON GOLD PLATED								
	67491-2032	0.38 MICRON GOLD PLATED								
	67491-2035	GOLD FLASH	2.35	2.40	2.00					
	67491-2036	0.76 MICRON GOLD PLATED								
	67491-2037	0.38 MICRON GOLD PLATED								
A	67491-2038	GOLD FLASH	3.00	3.20	2.40	PURE TIN	BLUE PENTONE NO.293C Δ E<3			
	67491-2039	0.76 MICRON GOLD PLATED								
	67491-2040	0.38 MICRON GOLD PLATED								

ADD MATERIAL NUMBER EC NO. SH2006-0007 DRWN: JZENG CHKD: GMA APPR: YIYAP	DESCRIPTION REV	QUALITY SYMBOLS ▽=0 ▽=0	GENERAL TOLERANCES (UNLESS SPECIFIED)	DIMENSION STYLE MM ONLY	SCALE 4:1	DESIGN UNITS METRIC	THIRD ANGLE PROJECTION
			mm INCH	DRAWN BY RICHARD	DATE '01/06/21	TITLE 1.27MM HIGH SPEED SERIAL PLUG VERTICLE TYPE	
			4 PLACES ± --- ± --- 3 PLACES ± --- ± --- 2 PLACES ± 0.15 ± --- 1 PLACE ± 0.25 ± --- ANGULAR ± 3 °	CHECKED BY VINCENT	DATE '01/06/21		
			DRAFT WHERE APPLICABLE MUST REMAIN WITHIN DIMENSIONS	APPROVED BY ERIC	DATE '01/06/21	MATERIAL NO. SD-67491-002	DOCUMENT NO. SD-67491-002

ib\_frame\_A3\_P\_AM\_T  
Rev. D 2004/06/28