

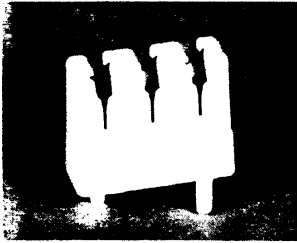
107 430.

LSA-PLUS Series 4 for Printed Circuit Boards PCB Connection Modules 4/3 and 4/4

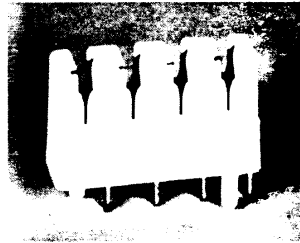
KRONE

3.1.65.01.

LSA-PLUS PCB connection modules 4/3 and 4/4 (3-pole and 4-pole) are optimal connection elements between the conductor paths of printed circuit boards and the wires to be connected. These modules offer the advantage of the quick, convenient and safe LSA-PLUS connection technique for wires in conjunction with modular design for printed circuit board assembly without any special devices. The PCB connection modules are secured by means of the plastic locking pins which project through corresponding holes in the printed circuit board where they are sealed by ultrasonic or hot staking. Using the insulated tool (see page 3.1.05.01.), even wires of alive circuits can be connected (in conformity with the applicable rules and regulations). Wire disconnections for rewiring work are easily made by means of the extractor hook on the above tool.



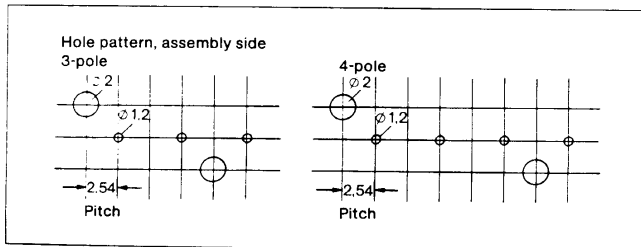
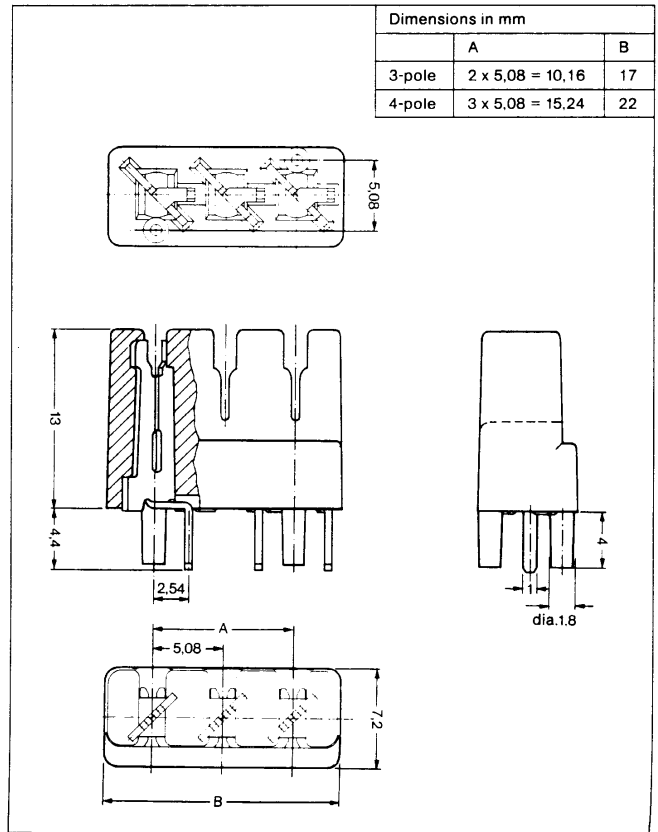
3-pole



4-pole

Description	KKNr (order No.)	Weight kg
LSA-PLUS PCB connection modules 4/3 3-pole 100 pieces	6048 1 001-03	0.200
LSA-PLUS PCB connection modules 4/4 4-pole 100 pieces	6048 1 001-04	0.250
Accessories:		
LSA-PLUS insertion tool (page 3.1.50.01.)	6089 2 003-00	0.110
LSA-PLUS disposable insertion tool (page 3.1.50.01.)	6417 3 006-00	0.006

Dimensions in mm		
	A	B
3-pole	2 x 5,08 = 10,16	17
4-pole	3 x 5,08 = 15,24	22



LSA-PLUS Series 4 for Printed Circuit Boards PCB Connection Modules 4/3 and 4/4

KRONE

3.1.65.02.

Technical Data

Climatic conditions:
Installation in dry rooms
at ambient temperatures between $-40^{\circ}\text{C}/-40^{\circ}\text{F}$
and $+80^{\circ}\text{C}/+176^{\circ}\text{F}$.

Mechanical data:
KRONE LSA-PLUS contacts[®] for
plastic-insulated wires with copper conductor
Conductor diameter 0.40 ... 0.65 mm, AWG 26 ... 22
Over insulation 0.70 ... 1.40 mm
Service life ≥ 50 rewiring operations
Press-in force, depending
on wire type ≤ 50 N
Extracting force on removing the
wire from the contact ≥ 10 N
Deformation temperature
of locking pin approx. 300°C
Soldering: manually or wave soldering

Electrical data:
(tested according to DIN at $40^{\circ}\text{C}/104^{\circ}\text{F}/93\%$ rel. humidity)
Insulation resistance $\geq 5 \times 10^4$ M Ω
Dielectric strength ≥ 2 kV RMS
Typical contact resistance 1 m Ω
Permissible current load
of LSA-PLUS contact corresponding to permissible
current load
a) of wire connected
b) of PCB conductor

Materials:
Plastic chassis glass-fiber reinforced polyester PBTP
Contact spring special brass, silver-plated