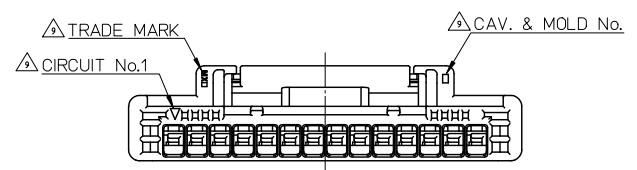
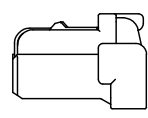
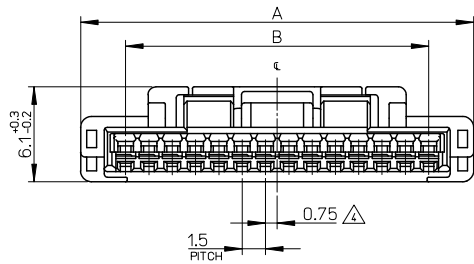
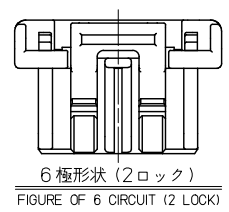
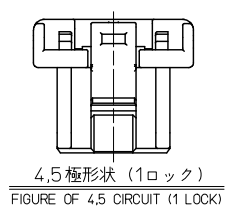
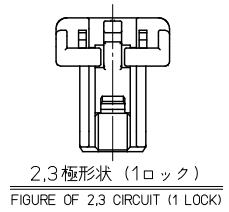
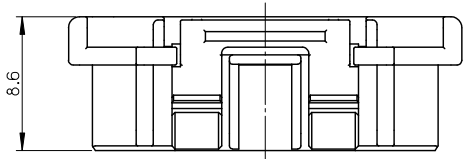


10 9 8 7 6 5 4 3 2 1



NOTES

- 材料 MATERIAL  
ハウジング: PBT, UL94-V0  
HOUSING: PBT, UL94-V0
  - 嵌合相手: 502584, 502585, 503159, 503175, 503339, 503340, 503395 シリーズ  
MATE WITH: 502584, 502585, 503159, 503175, 503339, 503340, 503395 SERIES.
  - 適合ターミナル: 502579, 503429 シリーズ  
APPLICABLE TERMINAL: 502579, 503429 SERIES.
- △ 極数/2=偶数極の場合に適用  
APPLY FOR (CIRCUIT/2)-EVEN
- △ 注文番号  
ORDER No.

502578-\*\*\*



- 本製品のプラスチック部に黒点・白点等が確認される場合や色合いが異なる場合がありますが、製品性能に影響はありません。  
THERE IS NO INFLUENCE IN THE PRODUCT PERFORMANCE THOUGH THE BLACK AND WHITE SPOT ETC. MIGHT BE CONFIRMED TO THE PLASTIC PART OF THIS PRODUCT AND THE SHADE MIGHT BE DIFFERENT.
  - アプリケーション仕様書(コネクタ取扱説明書): AS-502578-001, AS-502578-002  
APPLICATION SPECIFICATIONS (CONNECTOR MANUAL): AS-502578-001, AS-502578-002
  - 製品仕様書: PS-502584-001  
Product specification: PS-502584-001
- △ トレードマーク: MX プラス1文字の製造工場を示すアルファベットにて表示。但し・Jは JAPAN を示す。(例 MXJ)  
キャビティ番号: 1桁から2桁の数字にて表示。  
型式番号: アルファベット1文字にて表示。  
FORMED BY MX AND 1 MORE LETTER OF ALPHABET WHICH MEAN THE MANUFACTORY. BUT 'J' MEANS JAPAN. (TO TRADE MARK) (e.g. MXJ)  
AND BY 1-2 DIGIT NUMBER (TO CAVITY No.)  
AND BY 1 LETTER OF ALPHABET (TO MOLD No.)
- ELV 及び RoHS 適合品  
ELV AND RoHS COMPLIANT

No.	COLOR	CIRCUIT	
00	ベージュ BEIGE	2~15	
01	黒 BLACK		
02	赤 RED		
03	黄 YELLOW		
04	青 BLUE		
05	桃 PINK		
06	緑 GREEN		
07	茶 BROWN		
08	橙 ORANGE		
09	紫 VIOLET		
14	水 PALE BLUE		2

21	26.8	502578-15**	15
19.5	25.3	-14**	14
18	23.8	-13**	13
16.5	22.3	-12**	12
15	20.8	-11**	11
13.5	19.3	-10**	10
12	17.8	-09**	9
10.5	16.3	-08**	8
9	14.8	-07**	7
7.5	13.3	-06**	6
6	11.8	-05**	5
4.5	10.3	-04**	4
3	8.8	-03**	3
1.5	7.3	502578-02**	2
B	A	PLASTIC BAG	CIRCUIT No.
		ORDER No.	

REVISED EC NO: J2009-2139 DRW:KSETO CHKD:KASAKAWA APPR: S/CHIKAWA H REV	DESCRIPTION 2009/03/23 2009/03/24 2009/03/24	GENERAL TOLERANCES (UNLESS SPECIFIED)		DIMENSION STYLE MM ONLY	SCALE 4:1	DESIGN UNITS METRIC	THIRD ANGLE PROJECTION		
		10 UNDER ±0.2	10 OVER 30 UNDER ±0.25	30 OVER ±0.3	DRAWN BY N. ITO	DATE '07/07/09	TITLE 1.5MM W/B CONN. SINGLE PLUG HOUSING		
		ANGULAR ±3 °			DRAFT WHERE APPLICABLE MUST REMAIN WITHIN DIMENSIONS	CHECKED BY K. ASAKAWA	DATE '07/07/10	MOLEX INCORPORATED	
					SEE TABLE	APPROVED BY Y. ITO	DATE '07/07/10	DOCUMENT NO. SD-502578-001	SHEET NO. 1 OF 1
SIZE A3 THIS DRAWING CONTAINS INFORMATION THAT IS PROPRIETARY TO MOLEX INCORPORATED AND SHOULD NOT BE USED WITHOUT WRITTEN PERMISSION									