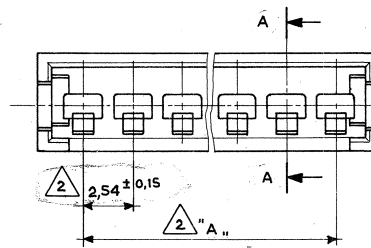
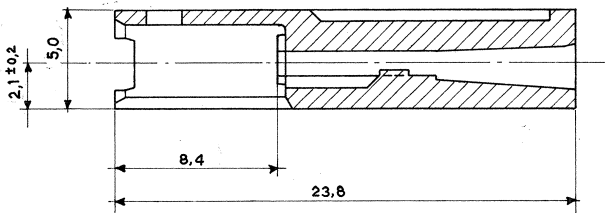


SCALA NON IMPEGNATIVA
(DO NOT SCALE)
DIMENSIONI IN
DIMENSIONS IN mm

METRIC

PROIEZIONE EUROPEA
(EUROPEAN PROJECTION)

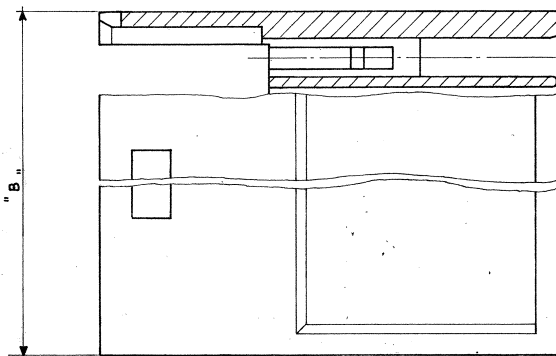
Sezione A-A
(Section)



Note: (Notes)

- 1 Noryl (UL 74-VI) Colore Nero (Black Colour).
- 2 Tolleranza non cumulativa. (Non-cumulative Tolerance).
- 3 PA 6.6 15% g.f. masterizzato Rosso (PA 6.6 15% g.f. masterized - RED)

N° Pos.	Part. Number	Dim. "A"	Dim. "B"	Mat.
4	284072-1	7,62	12,5	1
2	284071-1	2,54	7,4	
22	280636	53,34	58,2	
15	280635	35,56	40,4	
12	280634	27,94	32,8	
10	280633	22,86	27,7	
9	280632	20,32	25,1	
8	280631	17,78	22,6	
6	280630	12,70	17,5	
4	280629	7,62	12,5	
2	280628	2,54	7,4	3



FINITURA / COLORE (FINISH / COLOUR)	MATERIALE (MATERIAL)	NUMERO (PART NUMBER)
CUSTOMER DWG. FOR REFERENCE ONLY		DISEGNO PER CLIENTE SOLO PER RIFERIMENTO
<small>THIS DRAWING IS UNPUBLISHED</small>		<small>RELEASE FOR PUBLICATION</small>
<small>© COPYRIGHT 1986 BY AMP INCORPORATED, HARRISBURG, PA ALL INTERNATIONAL RIGHT RESERVED AMP PRODUCTS MAY BE COVERED BY U.S. AND FOREIGN PATENT AND/OR PATENT PENDING</small>		
<small>TOLLERANZE: SE NON DIVERSAMENTE SPECIFICATO (TOLERANCES UNLESS OTHERWISE SPECIFIED)</small>	<small>DIAM. ISOLANTE (INS. DIA. RANGE)</small>	<small>RANGO FILE (WIRE RANGE)</small>
± 0,3		5:1
<small>ANGOLI (ANGLES) ± 2°</small>	AMP AMP ITALIA S.p.A. Corso F.lli Cervi, 15 COLLEGNO (TORINO)	
<small>DESCRIZIONE (DESCRIPTION)</small>	AMP MODU II Pin Housing, Single Row, Crimp Snap-In.	
<small>LOC. SIZE</small>	<small>NUMERO (DWG NO.)</small>	<small>REV. (SHEET)</small>
IA3C-	280628	H2 1 OF 1
	(Master Dwg.)	

REV.	REVISIONI (REVISION RECORD)	DIS. DATA (DR) (DATE)
1	Revised and Redrawn	ES. 86
2	Revised note	
4		
H4		
H2		

DISTRIBUZIONE
(PRINT DIST.)