

AMPMODU MOD II Shrouded Headers

- Single and double row
- Straight or right angle
- Built-in polarisation and latching
- Gold or tin plated contacts
- 0.63mm square posts

Specification:

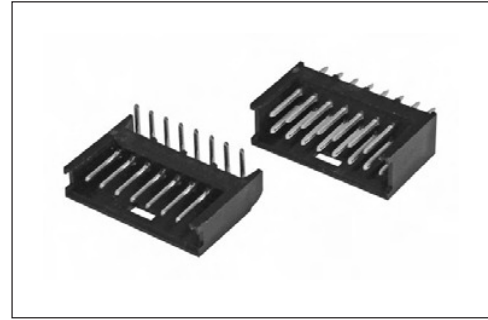
Housing - Black thermoplastic
UL 94V-0

Contacts - Brass (gold plating) or
phosphor bronze (tin plating)

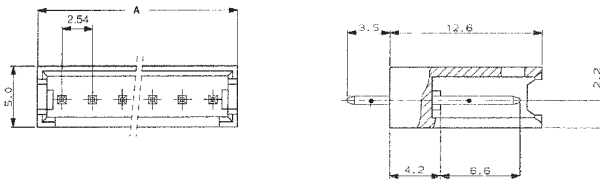
Current Rating - 3A

Mating Connectors:

MOD II Receptacle Housings - Page 23

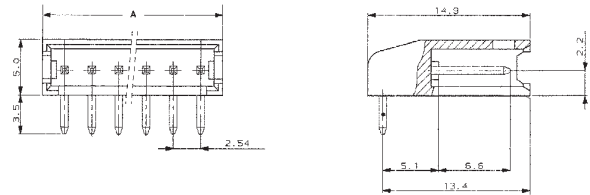


Single Row Straight



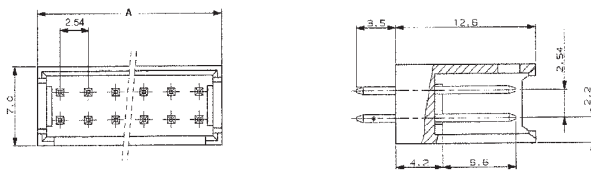
| No. of Positions | Dimension A | Part Number | |
|------------------|-------------|-------------|----------|
| | | 0.4µm Gold | Tin |
| 2 | 7.7 | 280370-2 | 280370-1 |
| 4 | 12.7 | 280371-2 | 280371-1 |
| 6 | 17.8 | 280372-2 | 280372-1 |
| 8 | 22.9 | 280373-2 | 280373-1 |
| 10 | 28.0 | 280374-2 | 280374-1 |
| 15 | 40.7 | 280375-2 | 280375-1 |

Single Row Right Angle



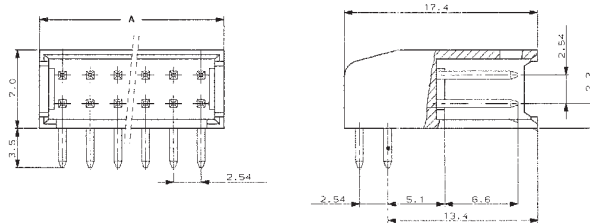
| No. of Positions | Dimension A | Part Number | |
|------------------|-------------|-------------|----------|
| | | 0.4µm Gold | Tin |
| 2 | 7.7 | 280377-2 | 280377-1 |
| 4 | 12.7 | 280378-2 | 280378-1 |
| 6 | 17.8 | 280379-2 | 280379-1 |
| 8 | 22.9 | 280380-2 | 280380-1 |
| 10 | 28.0 | 280381-2 | 280381-1 |
| 15 | 40.7 | 280382-2 | 280382-1 |

Double Row Straight



| No. of Positions | Dimension A | Part Number | |
|------------------|-------------|-------------|----------|
| | | 0.4µm Gold | Tin |
| 2 x 4 | 12.7 | 280384-2 | 280384-1 |
| 2 x 8 | 22.9 | 280385-2 | 280385-1 |
| 2 x 12 | 33.1 | 280521-2 | 280521-1 |
| 2 x 15 | 40.7 | 280387-2 | 280387-1 |

Double Row Right Angle



| No. of Positions | Dimension A | Part Number | |
|------------------|-------------|-------------|----------|
| | | 0.4µm Gold | Tin |
| 2 x 4 | 12.7 | 280389-2 | 280389-1 |
| 2 x 8 | 22.9 | 280390-2 | 280390-1 |
| 2 x 12 | 33.1 | 280522-2 | 280522-1 |
| 2 x 15 | 40.7 | 280392-2 | 280392-1 |