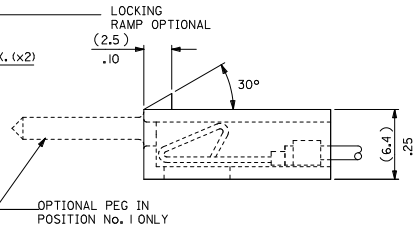
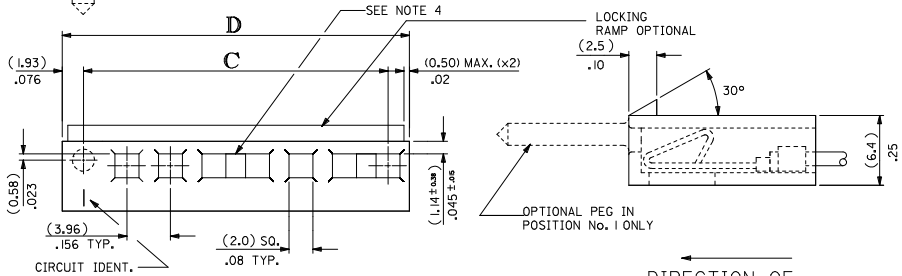


No. OF CCTS.	C	D	No. OF CCTS.	C	D
14	(51.51 ± 0.04) 2.028 ± 0.001	(55.37 ± 0.04) 2.180 ± 0.001	2	(3.96 ± 0.04) .156 ± 0.001	(7.82 ± 0.04) .308 ± 0.001
15	(55.47 ± 0.04) 2.184 ± 0.001	(59.33 ± 0.04) 2.336 ± 0.001	3	(7.92 ± 0.04) .312 ± 0.001	(11.79 ± 0.04) .464 ± 0.001
16	(59.44 ± 0.04) 2.340 ± 0.001	(63.30 ± 0.04) 2.492 ± 0.001	4	(11.89 ± 0.04) .468 ± 0.001	(15.75 ± 0.04) .620 ± 0.001
17	(63.40 ± 0.04) 2.496 ± 0.001	(67.26 ± 0.04) 2.644 ± 0.001	5	(15.85 ± 0.04) .624 ± 0.001	(19.71 ± 0.04) .776 ± 0.001
18	(67.36 ± 0.04) 2.652 ± 0.001	(71.22 ± 0.04) 2.804 ± 0.001	6	(19.81 ± 0.04) .780 ± 0.001	(23.67 ± 0.04) .932 ± 0.001
19	(71.32 ± 0.04) 2.808 ± 0.001	(75.18 ± 0.04) 2.960 ± 0.001	7	(23.77 ± 0.04) .936 ± 0.001	(27.64 ± 0.04) 1.088 ± 0.001
20	(75.29 ± 0.04) 2.964 ± 0.001	(79.15 ± 0.04) 3.116 ± 0.001	8	(27.74 ± 0.04) 1.092 ± 0.001	(31.60 ± 0.04) 1.244 ± 0.001
			9	(31.70 ± 0.04) 1.248 ± 0.001	(35.56 ± 0.04) 1.400 ± 0.001
			10	(35.66 ± 0.04) 1.404 ± 0.001	(39.52 ± 0.04) 1.556 ± 0.001
			11	(39.62 ± 0.04) 1.560 ± 0.001	(43.48 ± 0.04) 1.712 ± 0.001
			12	(43.59 ± 0.04) 1.716 ± 0.001	(47.45 ± 0.04) 1.868 ± 0.001
			13	(47.55 ± 0.04) 1.872 ± 0.001	(51.41 ± 0.04) 2.024 ± 0.001

- NOTES:
 1) SIMILAR TO 2139-N EXCEPT WITH POLARIZING PEG.
 2) FOR USE WITH TERMINAL No. 2478 OR 2578
 3) ASSEMBLED CONNECTOR MATES WITH (.14)/.045 SQUARE OR ROUND PIN.
 4) EXTENDED PIN ENTRY WINDOWS ARE POSSIBLE.



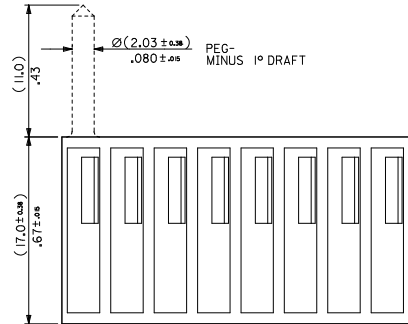
DIRECTION OF TERMINAL INSERTION.

ENG. No. DESIGNATION

3069 - A N 2 P

- *A* DESIGNATES NYLON 6/6, 94V-0 COLOUR RED
- *BLANK* DESIGNATES NYLON 6/6
- *B* DESIGNATES NYLON 6/6, 94V-0 COLOUR WHITE
- *P* INDICATES HOUSING WITH PEG
- *BLANK* INDICATES HOUSING WITHOUT PEG.
- *2* INDICATES HOUSING WITHOUT RAMP
- *BLANK* INDICATES HOUSING WITH RAMP

NO. OF CKT'S



CORRECT TEXT LOC EC NO: E2007-0720 T: DRWNSZAKIEWICZ 2007/03/28 CHKD: MORARTY 2007/03/29 APPR: JENNETH 2007/04/04 DESCRIPTION REV	QUALITY SYMBOLS	GENERAL TOLERANCES (UNLESS SPECIFIED)	DIMENSION STYLE	SCALE	DESIGN UNITS	THIRD ANGLE PROJECTION																														
	$\nabla=0$ $\nabla=0$	<table border="1"> <tr> <th></th> <th>mm</th> <th>INCH</th> </tr> <tr> <td>4 PLACES ± ---</td> <td>± ---</td> <td>± ---</td> </tr> <tr> <td>3 PLACES ± ---</td> <td>± .010</td> <td>± .004</td> </tr> <tr> <td>2 PLACES ± 0.25</td> <td>± .014</td> <td>± .005</td> </tr> <tr> <td>1 PLACE ± 0.35</td> <td>± ---</td> <td>± ---</td> </tr> <tr> <td colspan="3">ANGULAR ± 2 °</td> </tr> </table>		mm	INCH	4 PLACES ± ---	± ---	± ---	3 PLACES ± ---	± .010	± .004	2 PLACES ± 0.25	± .014	± .005	1 PLACE ± 0.35	± ---	± ---	ANGULAR ± 2 °			<table border="1"> <tr> <th>MM/IN</th> <th>DATE</th> <th>TITLE</th> </tr> <tr> <td>DRAWN BY SM</td> <td>1990/04/06</td> <td rowspan="4">HOUSING, KK CONNECTOR (3.96)/.156 CRIMP PEG/VOID OPTIONAL</td> </tr> <tr> <td>CHECKED BY E. FOLAN</td> <td>2000/08/30</td> </tr> <tr> <td>APPROVED BY MW/WHITE</td> <td>2000/08/30</td> </tr> <tr> <td>MATERIAL NO.</td> <td>DOCUMENT NO.</td> </tr> </table>	MM/IN	DATE	TITLE	DRAWN BY SM	1990/04/06	HOUSING, KK CONNECTOR (3.96)/.156 CRIMP PEG/VOID OPTIONAL	CHECKED BY E. FOLAN	2000/08/30	APPROVED BY MW/WHITE	2000/08/30	MATERIAL NO.	DOCUMENT NO.	4:1	METRIC	
		mm	INCH																																	
	4 PLACES ± ---	± ---	± ---																																	
3 PLACES ± ---	± .010	± .004																																		
2 PLACES ± 0.25	± .014	± .005																																		
1 PLACE ± 0.35	± ---	± ---																																		
ANGULAR ± 2 °																																				
MM/IN	DATE	TITLE																																		
DRAWN BY SM	1990/04/06	HOUSING, KK CONNECTOR (3.96)/.156 CRIMP PEG/VOID OPTIONAL																																		
CHECKED BY E. FOLAN	2000/08/30																																			
APPROVED BY MW/WHITE	2000/08/30																																			
MATERIAL NO.	DOCUMENT NO.																																			
DRAFT WHERE APPLICABLE MUST REMAIN WITHIN DIMENSIONS		SEE CHART	SD-3069-N***	MOLEX INCORPORATED		SHEET NO. 1 OF 2																														

10 9 8 7 6 5 4 3 2 1

No. OF CCTS.	ENG. No.	PART No.	LOCKING RAMP	No. OF CCTS.	ENG. No.	PART No.	LOCKING RAMP	No. OF CCTS.	ENG. No.	PART No.	LOCKING RAMP	
2	3069-A02	09-26-0200	YES	2	3069-02	09-91-0200	YES	18	3069-18	09-91-1800	YES	
	▲ -A022	▲ -27-0200	NO		▲ -022	▲ -92-0200	NO		▲ -182	▲ -92-1800	NO	
3	-A03	-26-0300	YES	3	-03	-91-0300	YES	19	-19	-91-1900	YES	
	-A032	-27-0300	NO		-032	-92-0300	NO		-192	-92-1900	NO	
4	-A04	-26-0400	YES	4	-04	-91-0400	YES	20	▼ -20	▼ -91-2000	YES	
	-A042	-27-0400	NO		-042	-92-0400	NO		3069-202	09-92-2000	NO	
5	-A05	-26-0500	YES	5	-05	-91-0500	YES					
	-A052	-27-0500	NO		-052	-92-0500	NO					
6	-A06	-26-0600	YES	6	-06	-91-0600	YES					
	-A062	-27-0600	NO		-062	-92-0600	NO					
7	-A07	-26-0700	YES	7	-07	-91-0700	YES					
	-A072	-27-0700	NO		-072	-92-0700	NO					
8	-A08	-26-0800	YES	8	-08	-91-0800	YES					
	-A082	-27-0800	NO		-082	-92-0800	NO					
9	-A09	-26-0900	YES	9	-09	-91-0900	YES					
	-A092	-27-0900	NO		-092	-92-0900	NO					
10	-A10	-26-1000	YES	10	-10	-91-1000	YES					
	-A102	-27-1000	NO		-102	-92-1000	NO					
11	-A11	-26-1100	YES	11	-11	-91-1100	YES	No. OF CCTS.	ENG. No.	PART No.	LOCKING RAMP	VOID LOC'N
	-A112	-27-1100	NO		-112	-92-1100	NO	4	3069-04VC	09-28-0403	YES	3
12	-A12	-26-1200	YES	12	-12	-91-1200	YES	4	3069-042VB	09-29-0402	NO	2
	-A122	-27-1200	NO		-122	-92-1200	NO	5	3069-052VB	09-29-0502	NO	2
13	-A13	-26-1300	YES	13	-13	-91-1300	YES	6	3069-062VB	97-00-0860	NO	2
	-A132	-27-1300	NO		-132	-92-1300	NO	7	3069-B07	97-00-2511	YES	NONE
14	-A14	-26-1400	YES	14	-14	-91-1400	YES	5	3069-B05	97-00-1009	YES	NONE
	-A142	-27-1400	NO		-142	-92-1400	NO	NOTE: NON-STANDARD ITEMS				
15	-A15	-26-1500	YES	15	-15	-91-1500	YES					
	-A152	-27-1500	NO		-152	-92-1500	NO					
16	-A16	-26-1600	YES	16	-16	-91-1600	YES					
	-A162	-27-1600	NO		-162	-92-1600	NO					
17	-A17	-26-1700	YES	17	▼ -17	▼ -91-1700	YES					
	-A172	-27-1700	NO		3069-172	09-92-1700	NO					
18	-A18	-26-1800	YES									
	-A182	-27-1800	NO									
19	-A19	-26-1900	YES									
	-A192	-27-1900	NO									
20	▼ -A20	▼ -26-2000	YES									
	3069-A202	09-27-2000	NO									

No. OF CCTS.	ENG. No.	PART No.	LOCKING RAMP	VOID LOC'N
4	3069-04VC	09-28-0403	YES	3
4	3069-042VB	09-29-0402	NO	2
5	3069-052VB	09-29-0502	NO	2
6	3069-062VB	97-00-0860	NO	2
7	3069-B07	97-00-2511	YES	NONE
5	3069-B05	97-00-1009	YES	NONE

OBsolete 21-24 CKT EC NO: E2005-0115 DRAWN BY: SM 2004/08/13 CHECKED BY: DMOR IART 2004/08/14 APPR: J DENNEHY 2004/08/25	QUALITY SYMBOLS ▽=0 ▽=0	GENERAL TOLERANCES (UNLESS SPECIFIED) mm INCH 4 PLACES ± --- ± --- 3 PLACES ± --- ± --- 2 PLACES ± --- ± --- 1 PLACE ± --- ± --- ANGULAR ± 2 °	DIMENSION STYLE MM/IN DRAWN BY: SM DATE: 1990/04/09 CHECKED BY: DMOR IART DATE: 2004/08/11 APPROVED BY: J DENNEHY DATE: 2004/08/13	SCALE: --- DESIGN UNITS: METRIC THIRD ANGLE PROJECTION	TITLE: HOUSING, KK CONNECTOR (3.96)/.156, CRIMP PEG/VOID OPTIONAL.
	MATERIAL NO. SEE CHART		DOCUMENT NO. SD-3069-N***		SHEET NO. 2 OF 2
	DRAFT WHERE APPLICABLE MUST REMAIN WITHIN DIMENSIONS				
	THIS DRAWING CONTAINS INFORMATION THAT IS PROPRIETARY TO MOLEX INCORPORATED AND SHOULD NOT BE USED WITHOUT WRITTEN PERMISSION				

9 8 7 6 5 4 3 2 1