

| REVISIONS | | | | |
|-----------|------|---------------------------|-----------|-------|
| SYM | ZONE | ECN, ERN NO. | DATE | APPR. |
| E | | PLATING 5 & 6 ADDED | 2007/04/5 | A.G. |
| F | | MATING END GAP DIM. ADDED | SEP 03/08 | A.G. |

THIS IS A CAD DRAWING. DO NOT MANUALLY REVISE.

MATERIAL NOTES:

PLASTIC HOUSING:
 HIGH TEMPERATURE RESISTANT PLASTIC
 COLOR: BLACK
 FLAMMABILITY RATING UL94V-0.

PACKAGING:
 TAPE AND REEL PACKAGING.

TEMPERATURE RANGE:
 -40°C TO +85°C

CONTACTS:

PHOSPHOR BRONZE

PLATING OPTION 1: (U75 ONLY)
 30µ" [0.76 µm] MIN. GOLD ON MATING AREA AND 100-150 µ" (3.81-7.62 µm) MIN. TIN/LEAD (90/10) PLATING ON TERMINATION OVER 50µ" [1.27 µm] MIN. NICKEL UNDER LAYER.

PLATING OPTION 2: (RoHS FOR UE75 ONLY)
 30µ" [0.76 µm] MIN. GOLD ON MATING AREA AND 2 µ" (0.05 µm) GOLD FLASH PLATING ON TERMINATION OVER 50µ" [1.27 µm] MIN. NICKEL UNDER LAYER.

PLATING OPTION 3: (RoHS FOR UE75 ONLY)
 30µ" [0.76 µm] MIN. GOLD ON MATING AREA AND 100-150 µ" (3.81-7.62 µm) MIN. LOW WHISKER MATTE TIN PLATING ON TERMINATION OVER 50µ" [1.27 µm] MIN. NICKEL UNDER LAYER.

PLATING OPTION 4: (FOR U75 ONLY)
 15µ" [0.38 µm] MIN. GOLD ON MATING AREA AND 100-150 µ" (3.81-7.62 µm) MIN. TIN/LEAD (90/10) PLATING ON TERMINATION OVER 50µ" [1.27 µm] MIN. NICKEL UNDER LAYER.

PLATING OPTION 5: (RoHS FOR UE75 ONLY)
 15µ" [0.76 µm] MIN. GOLD ON MATING AREA AND 2 µ" (0.05 µm) GOLD FLASH PLATING ON TERMINATION OVER 50µ" [1.27 µm] MIN. NICKEL UNDER LAYER.

PLATING OPTION 6: (RoHS FOR UE75 ONLY)
 15µ" [0.76 µm] MIN. GOLD ON MATING AREA AND 100-150 µ" (3.81-7.62 µm) MIN. LOW WHISKER MATTE TIN PLATING ON TERMINATION OVER 50µ" [1.27 µm] MIN. NICKEL UNDER LAYER.

AMPHENOL PART NUMBER CONFIGURATION

UX75 - A 30 - X 0 0 0 T

SFP RECEPTACLE
 U75 = NON-RoHS
 UE75 = RoHS COMPLIANCE

CONTACT PLATING

- (FOR U75 NON-RoHS)
- 1 = PLATING OPTION 1 (SEE MATERIAL NOTE 1)
- 4 = PLATING OPTION 4 (SEE MATERIAL NOTE 1)
- (FOR UE75 RoHS)
- 2 = PLATING OPTION 2 (SEE MATERIAL NOTE 1)
- 3 = PLATING OPTION 3 (SEE MATERIAL NOTE 1)
- 5 = PLATING OPTION 5 (SEE MATERIAL NOTE 1)
- 6 = PLATING OPTION 6 (SEE MATERIAL NOTE 1)

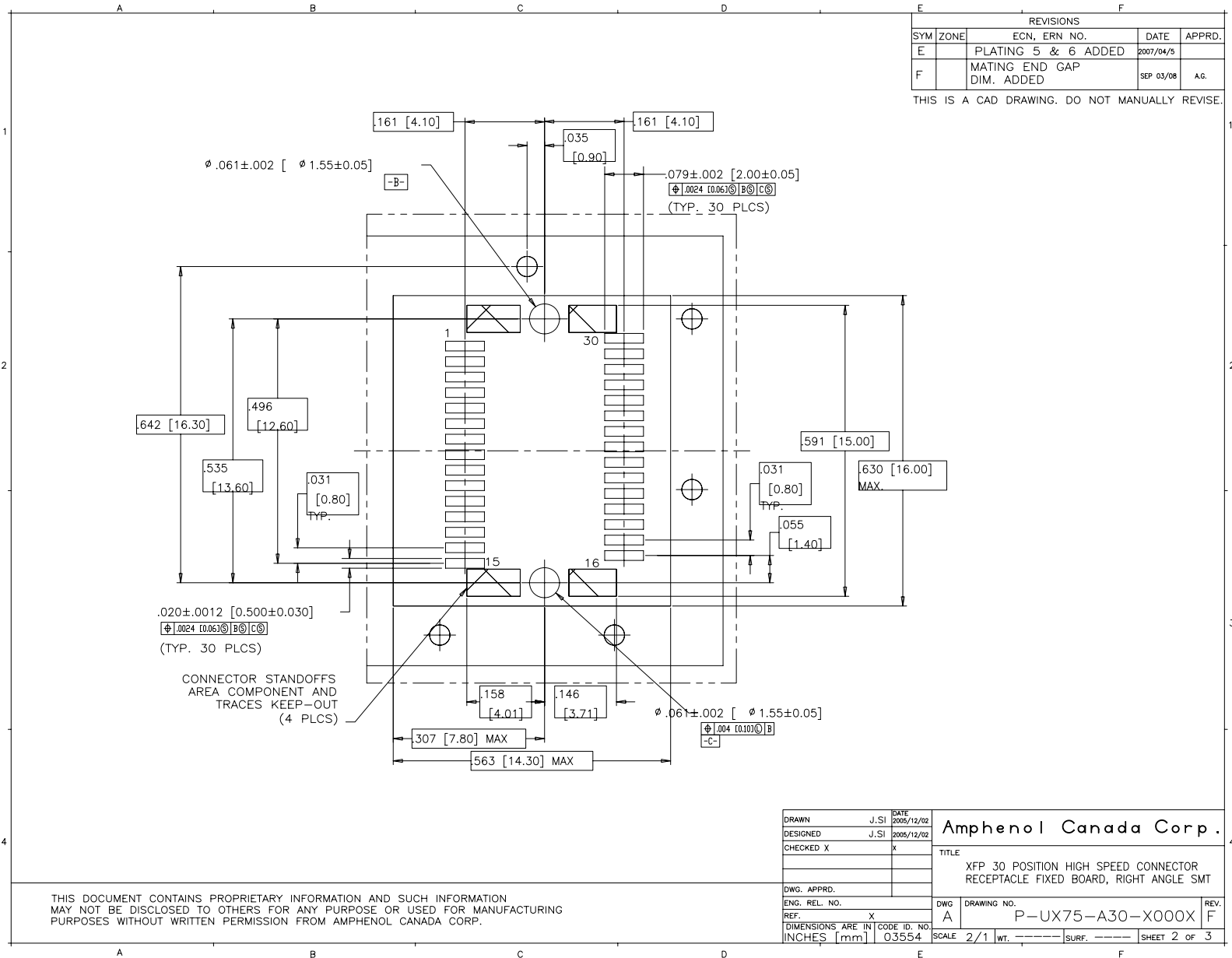
| | | | |
|-------------------|------|--------------|------------|
| DRAWN | J.SI | DATE | 2005/12/02 |
| DESIGNED | J.SI | DATE | 2005/12/02 |
| CHECKED | X | | |
| I. E. APPRD. | | | |
| O. A. APPRD. | | | |
| DWG. APPRD. | | | |
| ENG. REL. NO. | | | |
| REF. | X | | |
| DIMENSIONS ARE IN | | CODE ID. NO. | |
| INCHES [mm] | | 03554 | |

Amphenol Canada Corp.

TITLE
 XFP 30 POSITION HIGH SPEED CONNECTOR RECEPTACLE FIXED BOARD, RIGHT ANGLE SMT

| | | |
|-------|------------------|------------------------------------|
| DWG | DRAWING NO. | REV. |
| A | P-UX75-A30-X000X | F |
| SCALE | 4/1 | WT. ----- SURF. ----- SHEET 1 OF 3 |

THIS DOCUMENT CONTAINS PROPRIETARY INFORMATION AND SUCH INFORMATION MAY NOT BE DISCLOSED TO OTHERS FOR ANY PURPOSE OR USED FOR MANUFACTURING PURPOSES WITHOUT WRITTEN PERMISSION FROM AMPHENOL CANADA CORP.



| REVISIONS | | | | |
|-----------|------|---------------------------|-----------|--------|
| SYM | ZONE | ECN, ERN NO. | DATE | APPRD. |
| E | | PLATING 5 & 6 ADDED | 2007/04/5 | |
| F | | MATING END GAP DIM. ADDED | SEP 03/08 | A.G. |

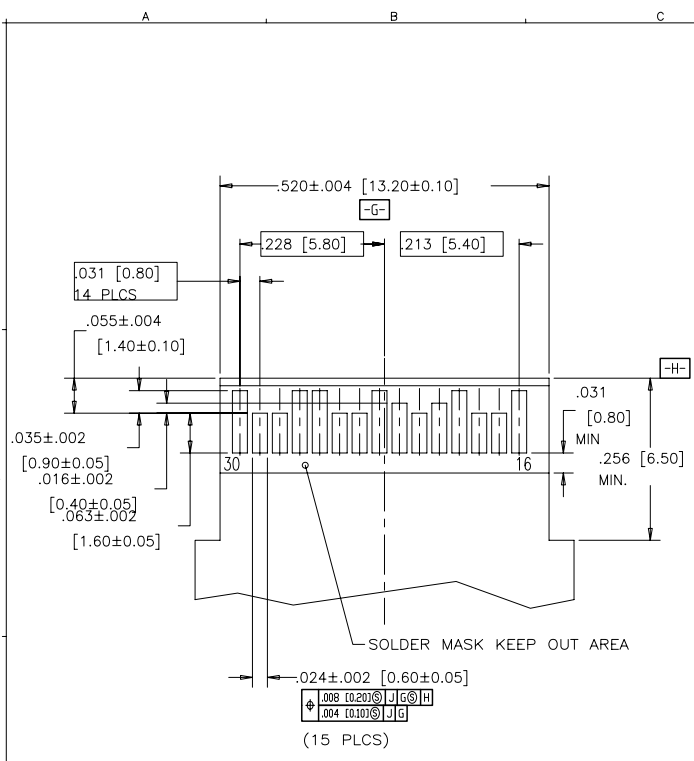
THIS IS A CAD DRAWING. DO NOT MANUALLY REVISE.

| | | | | |
|-------------------|--------|--------------|------------|--|
| DRAWN | J.SI | DATE | 2005/12/02 | Amphenol Canada Corp. |
| DESIGNED | J.SI | DATE | 2005/12/02 | |
| CHECKED | X | | | TITLE |
| | | | | XFP 30 POSITION HIGH SPEED CONNECTOR RECEPTACLE FIXED BOARD, RIGHT ANGLE SMT |
| DWG. APPRD. | | | | DWG |
| ENG. REL. NO. | | | | A |
| REF. | X | | | DRAWING NO. |
| DIMENSIONS ARE IN | INCHES | CODE ID. NO. | 03554 | P-UX75-A30-X000X |
| | [mm] | | | REV. |
| | | | | F |
| | | SCALE | 2/1 | WT. |
| | | | | SURF. |
| | | | | SHEET 2 OF 3 |

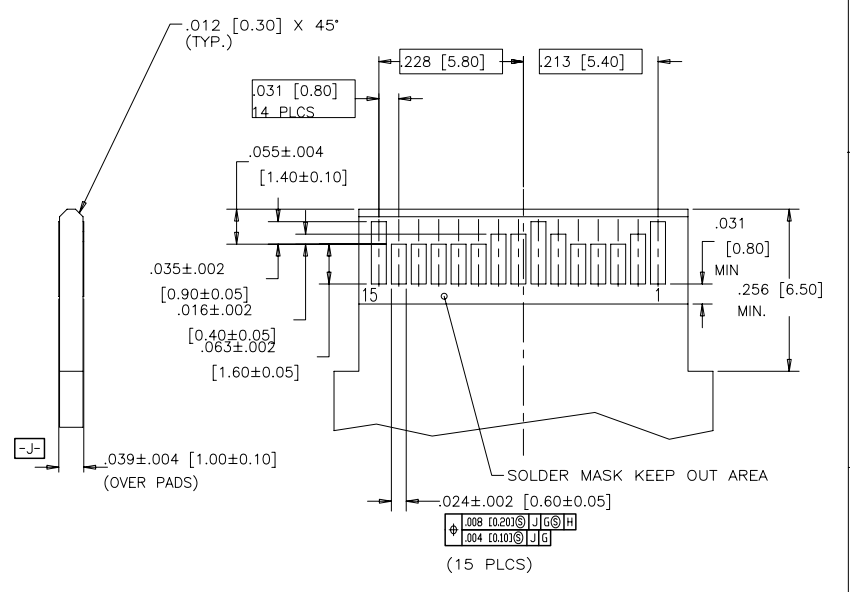
THIS DOCUMENT CONTAINS PROPRIETARY INFORMATION AND SUCH INFORMATION MAY NOT BE DISCLOSED TO OTHERS FOR ANY PURPOSE OR USED FOR MANUFACTURING PURPOSES WITHOUT WRITTEN PERMISSION FROM AMPHENOL CANADA CORP.

| REVISIONS | | | | |
|-----------|------|---------------------------|-----------|--------|
| SYM | ZONE | ECN, ERN NO. | DATE | APPRD. |
| E | | PLATING 5 & 6 ADDED | 2007/04/5 | |
| F | | MATING END GAP DIM. ADDED | SEP 03/08 | A.G. |

THIS IS A CAD DRAWING. DO NOT MANUALLY REVISE.



TOP VIEW OF BOARD



BOTTOM VIEW OF BOARD

RECOMMENDED LAYOUT DETAIL
MATING TRANSCEIVER PCB

| | | | | | |
|-------------------|------|--------------|------------|--|------------------|
| DRAWN | J.SI | DATE | 2005/12/02 | Amphenol Canada Corp. | |
| DESIGNED | J.SI | DATE | 2005/12/02 | | |
| CHECKED | X | | | TITLE | |
| DWG. APPRD. | | | | XFP 30 POSITION HIGH SPEED CONNECTOR RECEPTACLE FIXED BOARD, RIGHT ANGLE SMT | |
| ENG. REL. NO. | | DWG. | A | DRAWING NO. | P-UX75-A30-X000X |
| REF. | X | | | REV. | F |
| DIMENSIONS ARE IN | | CODE ID. NO. | 03554 | SCALE | 4:1 |
| INCHES [mm] | | | | WT. | ----- |
| | | | | SURF. | ----- |
| | | | | SHEET | 3 OF 3 |

THIS DOCUMENT CONTAINS PROPRIETARY INFORMATION AND SUCH INFORMATION MAY NOT BE DISCLOSED TO OTHERS FOR ANY PURPOSE OR USED FOR MANUFACTURING PURPOSES WITHOUT WRITTEN PERMISSION FROM AMPHENOL CANADA CORP.