

AMPHENOL PART NUMBER CONFIGURATION:

U65 - X XX - X X 1 XXXX

INFINITY RECEPTACLE

STYLE

B = R/A SMT, 2 LOCATION AND 2 SOLDERING POSTS
E = R/A SMT, 2 LOCATION AND 2 SCREW MOUNT HOLES

CONNECTOR TYPE

04 = 4X
12 = 12X

PLATING

1 = 50µ" GOLD
2 = 30µ" GOLD
3 = GOLD FLASH OVER PALLADIUM-NICKEL (LEAD FREE)
4 = 50µ" GOLD (RoHS COMPLIANT)
5 = 30µ" GOLD (RoHS COMPLIANT)
B = 50µ" GOLD (RoHS COMPLIANT)
C = 30µ" GOLD (RoHS COMPLIANT)

OPTION

0 = 2 PIECE LOCKING PLATE (SHIPPED LOOSE)
1 = ONE PIECE LOCKING PLATE (SHIPPED LOOSE)
2 = NO LOCKING PLATE
3 = NO LOCKING PLATE AND NO GASKET

PACKAGING/SPECIAL

(NOTE: ALL "M" OPTIONS ARE FOR STYLE E WITH .062" TO .093" THICK PCB'S ONLY)
NO DIGIT = TRAY PACKAGING NO REAR COVER
C = TRAY PACKAGING WITH REAR COVER (SHIPPED LOOSE)
M = TRAY PACKAGING, NO REAR COVER, M2 SCREWS INCLUDED (SHIPPED LOOSE)
CM = TRAY PACKAGING, W/ REAR COVER, M2 SCREWS INCLUDED (BOTH SHIPPED LOOSE)
T = TAPE & REEL PACKAGING NO REAR COVER
CT = TAPE & REEL PACKAGING W/ REAR COVER (SHIPPED LOOSE)
MT = TAPE & REEL PACKAGING, NO REAR COVER, M2 SCREWS INCLUDED (SHIPPED LOOSE)
CMT = TAPE & REEL PACKAGING, W/ REAR COVER, M2 SCREWS INCLUDED (BOTH SHIPPED LOOSE)

KEYING OPTION

0 = NO KEYING (STD)
1 = KEYING 1 & 6
2 = KEYING 2 & 6
3 = KEYING 3 & 5
4 = KEYING 4 & 5

MOUNTING STYLE

LANYARD LATCH

REVISIONS				
SYM	ZONE	ECN, ERN NO.	DATE	APPRD.
D		PROPOSAL	SEP20/06	A.G.
E		PROPOSAL	APR16/10	Z.L.

THIS IS A CAD DRAWING. DO NOT MANUALLY REVISE.

1. MATERIAL:

PLASTIC HOUSING:

HIGH TEMPERATURE POLYMER, FLAMMABILITY RATING UL94V-0.

CONTACTS:

PHOSPHOR BRONZE

PLATING OPTION 1 OR 2 (50µ" OR 30µ" GOLD): 50µ" [1.27 µm] OR 30µ" [0.76 µm] MIN. GOLD OVER 50µ" [1.27 µm] MIN. NICKEL ON CONTACT MATING SURFACES. 150µ" [3.81 µm] MIN. TIN-LEAD (90/10) OVER 50µ" [1.27 µm] NICKEL ON CONTACT TAILS.

PLATING OPTION 3 (GOLD FLASH OVER PALLADIUM-NICKEL): 2µ" [0.05 µm] MIN. GOLD OVER 25µ" [0.635 µm] MIN. PALLADIUM-NICKEL ON CONTACT MATING SURFACES. 0.3µ" [0.007 µm] MIN. GOLD OVER 1.2µ" [0.03 µm] MIN. PALLADIUM-NICKEL ON CONTACT TAILS. 50µ" [1.27 µm] MIN. NICKEL UNDER PLATING.

PLATING OPTION 4 OR 5 (RoHS) (50µ" OR 30µ" GOLD): 50µ" [1.27 µm] OR 30µ" [0.76 µm] MIN. GOLD OVER 50µ" [1.27 µm] MIN. NICKEL ON CONTACT MATING SURFACES. 2µ" [0.05 µm] MIN. GOLD OVER 50µ" [1.27 µm] MIN. NICKEL ON CONTACT TAILS.

PLATING OPTION B OR C (RoHS) (50µ" OR 30µ" GOLD): 50µ" [1.27 µm] OR 30µ" [0.76 µm] MIN. GOLD OVER 50µ" [1.27 µm] MIN. NICKEL ON CONTACT MATING SURFACES. 100-150µ" [2.54-3.81 µm] MATTE TIN OVER 50µ" [1.27 µm] MIN. NICKEL ON CONTACT TAILS.

METAL SHELL: DIE CASTING ALLOY

PLATING: 100µ" [2.54 µm] MIN. NICKEL OVER COPPER UNDER LAYER

GASKET: STAINLESS STEEL

LOCKING PLATE: STAINLESS STEEL

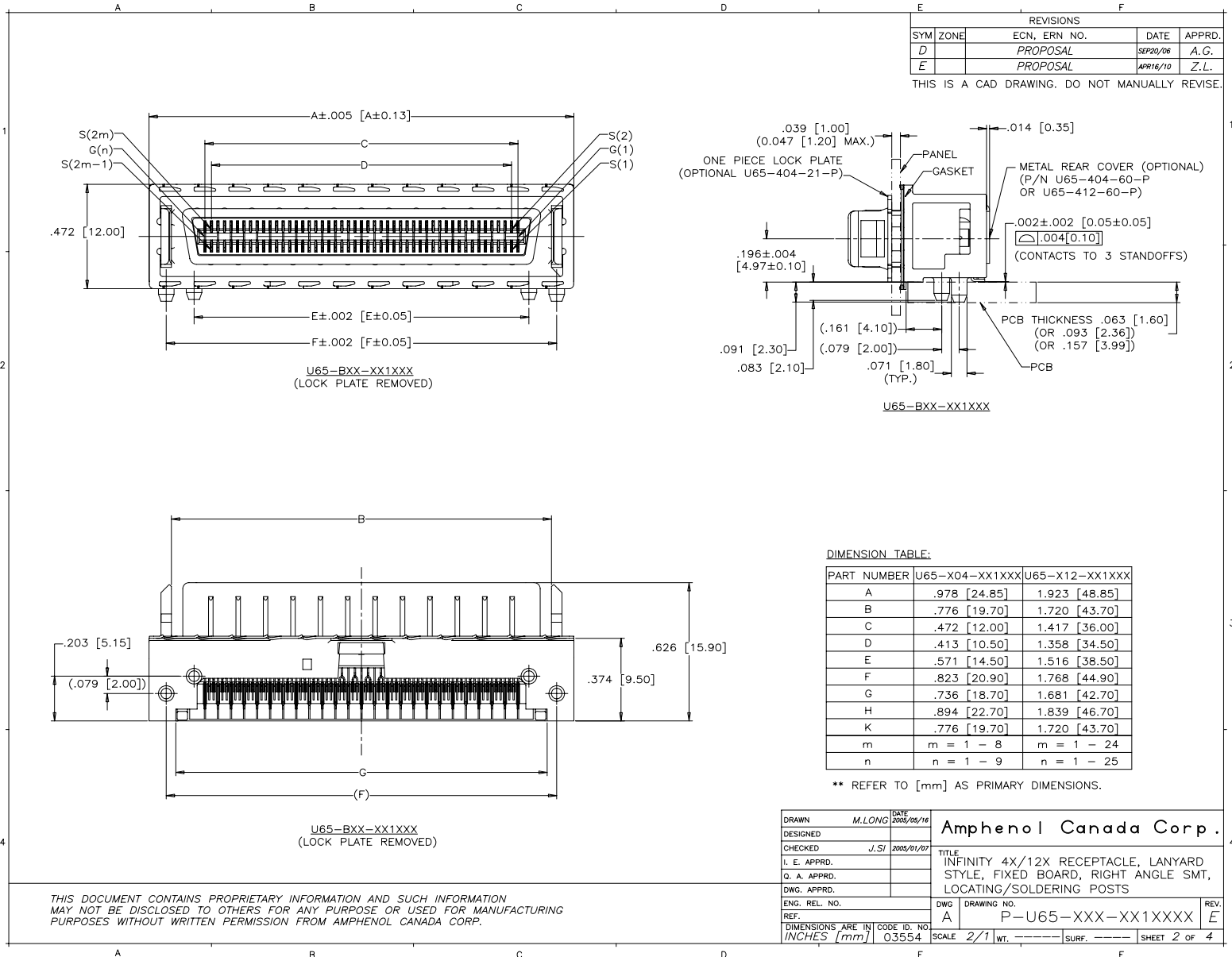
M2 SCREWS: STEEL WITH ZINC PLATING

2. TEMPERATURE RANGE:

-40°C TO +85°C

THIS DOCUMENT CONTAINS PROPRIETARY INFORMATION AND SUCH INFORMATION MAY NOT BE DISCLOSED TO OTHERS FOR ANY PURPOSE OR USED FOR MANUFACTURING PURPOSES WITHOUT WRITTEN PERMISSION FROM AMPHENOL CANADA CORP.

DRAWN M.LONG		DATE 2005/05/16	Amphenol Canada Corp.	
DESIGNED				
CHECKED J.SJ		2005/05/16	TITLE	
I. E. APPRD.			INFINITY 4X/12X RECEPTACLE, LANYARD	
O. A. APPRD.			STYLE, FIXED BOARD, RIGHT ANGLE SMT,	
DWG. APPRD.			LOCATING/SOLDERING POSTS	
ENG. REL. NO.			DWG	DRAWING NO.
REF.			A	P-U65-XXX-XX1XXXX
DIMENSIONS ARE IN INCHES [mm]		CODE ID. NO. 03554	SCALE 2/1	WT. ----- SURF. ----- SHEET 1 OF 4



REVISIONS				
SYM	ZONE	ECN, ERN NO.	DATE	APPRD.
D		PROPOSAL	SEP20/06	A.G.
E		PROPOSAL	APR16/10	Z.L.

THIS IS A CAD DRAWING. DO NOT MANUALLY REVISE.

DIMENSION TABLE:

PART NUMBER	U65-X04-XX1XXX	U65-X12-XX1XXX
A	.978 [24.85]	1.923 [48.85]
B	.776 [19.70]	1.720 [43.70]
C	.472 [12.00]	1.417 [36.00]
D	.413 [10.50]	1.358 [34.50]
E	.571 [14.50]	1.516 [38.50]
F	.823 [20.90]	1.768 [44.90]
G	.736 [18.70]	1.681 [42.70]
H	.894 [22.70]	1.839 [46.70]
K	.776 [19.70]	1.720 [43.70]
m	m = 1 - 8	m = 1 - 24
n	n = 1 - 9	n = 1 - 25

** REFER TO [mm] AS PRIMARY DIMENSIONS.

DRAWN	M.LONG	DATE	2005/05/16
DESIGNED			
CHECKED	J.SI	DATE	2005/01/07
I. E. APPRD.			
Q. A. APPRD.			
DWG. APPRD.			
ENG. REL. NO.			
REF.			
DIMENSIONS ARE IN	CODE ID. NO.		
INCHES [mm]	03554		

Amphenol Canada Corp.

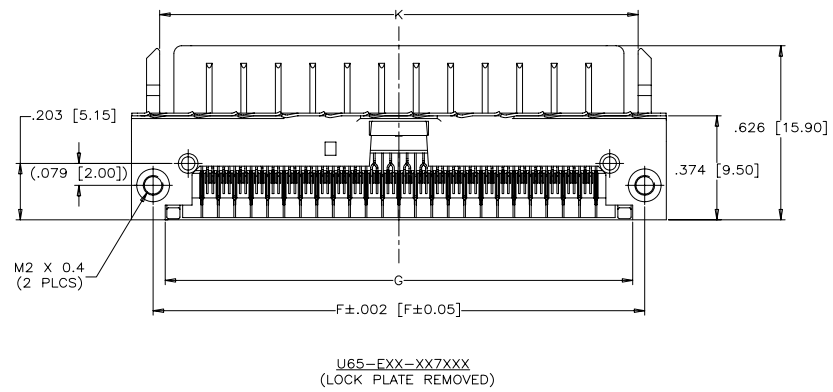
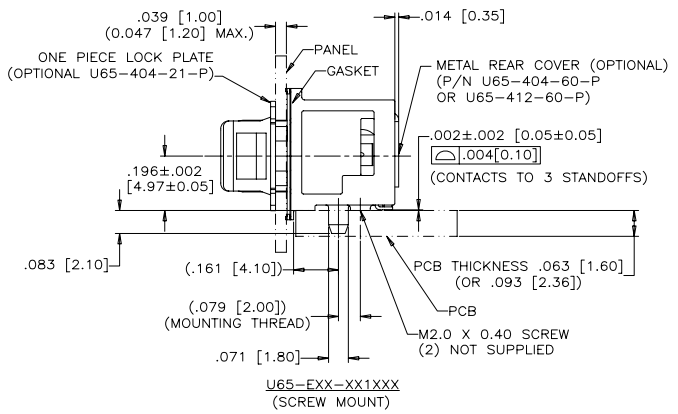
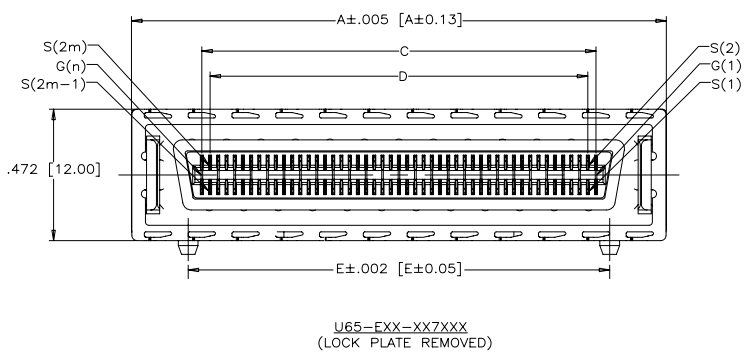
TITLE
INFINITY 4X/12X RECEPTACLE, LANYARD
STYLE, FIXED BOARD, RIGHT ANGLE SMT,
LOCATING/SOLDERING POSTS

DWG.	DRAWING NO.	REV.
A	P-U65-XXX-XX1XXXX	E
SCALE	2/1	WT. _____ SURF. _____ SHEET 2 OF 4

THIS DOCUMENT CONTAINS PROPRIETARY INFORMATION AND SUCH INFORMATION
MAY NOT BE DISCLOSED TO OTHERS FOR ANY PURPOSE OR USED FOR MANUFACTURING
PURPOSES WITHOUT WRITTEN PERMISSION FROM AMPHENOL CANADA CORP.

REVISIONS				
SYM	ZONE	ECN, ERN NO.	DATE	APPRD.
D		PROPOSAL	SEP20/06	A.G.
E		PROPOSAL	APR16/10	Z.L.

THIS IS A CAD DRAWING. DO NOT MANUALLY REVISE.



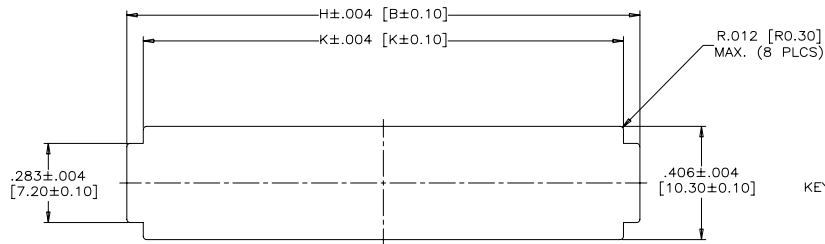
** REFER TO [mm] AS PRIMARY DIMENSIONS.

DRAWN	M.LONG	DATE	2005/05/16	Amphenol Canada Corp. TITLE INFINITY 4X/12X RECEPTACLE, LANYARD STYLE, FIXED BOARD, RIGHT ANGLE SMT, LOCATING/SOLDERING POSTS DWG DRAWING NO. A P-U65-XXX-XX1XXXX REF.	REV.	E							
DESIGNED													
CHECKED	J.SI	DATE	2005/05/16										
I. E. APPRD.													
Q. A. APPRD.													
DWG. APPRD.													
ENG. REL. NO.													
DIMENSIONS ARE IN	INCHES	CODE ID. NO.	03554	SCALE	2/1	WT.		SURF.		SHEET	3	OF	4

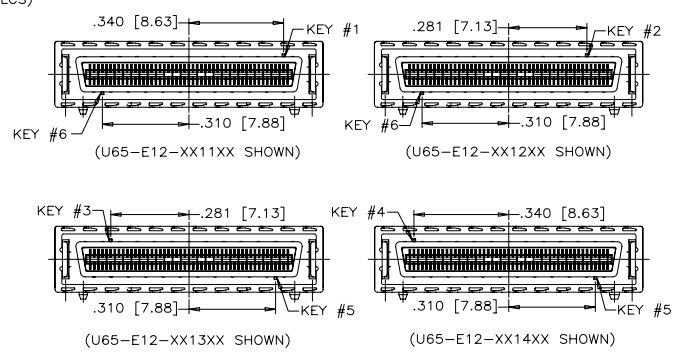
THIS DOCUMENT CONTAINS PROPRIETARY INFORMATION AND SUCH INFORMATION MAY NOT BE DISCLOSED TO OTHERS FOR ANY PURPOSE OR USED FOR MANUFACTURING PURPOSES WITHOUT WRITTEN PERMISSION FROM AMPHENOL CANADA CORP.

REVISIONS			
SYM	ZONE	ECN, ERN NO.	DATE APPRD.
D		PROPOSAL	SEP20/06 A.G.
E		PROPOSAL	APR16/10 Z.L.

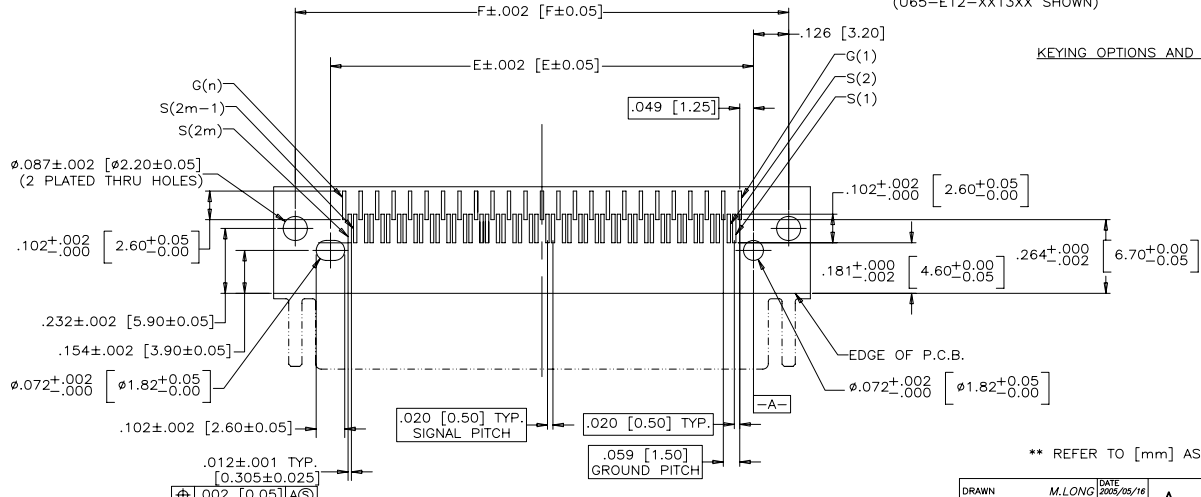
THIS IS A CAD DRAWING. DO NOT MANUALLY REVISE.



RECOMMENDED PANEL CUTOUT



KEYING OPTIONS AND LOCATIONS



RECOMMENDED P.C.B. LAYOUT
(COMPONENTS SIDE OF BOARD)

** REFER TO [mm] AS PRIMARY DIMENSIONS.

DRAWN	M.LONG	DATE	2009/05/16	Amphenol Canada Corp. TITLE INFINITY 4X/12X RECEPTACLE, LANYARD STYLE, FIXED BOARD, RIGHT ANGLE SMT, LOCATING/SOLDERING POSTS	DWG A DRAWING NO. P-U65-XXX-XX1XXXX REV. E
DESIGNED					
CHECKED	J.SJ	2009/05/16			
I. E. APPRD.					
Q. A. APPRD.					
DWG. APPRD.					
ENG. REL. NO.					
REF.					
DIMENSIONS ARE IN	INCHES (mm)	CODE ID. NO.	03554	SCALE	2/1
				WT.	
				SURF.	
					SHEET 4 OF 4

THIS DOCUMENT CONTAINS PROPRIETARY INFORMATION AND SUCH INFORMATION MAY NOT BE DISCLOSED TO OTHERS FOR ANY PURPOSE OR USED FOR MANUFACTURING PURPOSES WITHOUT WRITTEN PERMISSION FROM AMPHENOL CANADA CORP.