

This document is the property of Amphenol Corporation and is delivered on the express condition that it is not to be disclosed, reproduced or used, in whole or in part, for manufacturing or sale, by anyone other than Amphenol Corporation without the prior consent of that no right is granted in whole or in part to use any information in this document.

REVISIONS				
SYM	EDN	DESCRIPTION	DATE	APPROVED
A	HK	INITIAL RELEASE	08/15/01	Y.M.LEE

CUSTOMER INFORMATION DRAWING

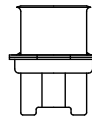
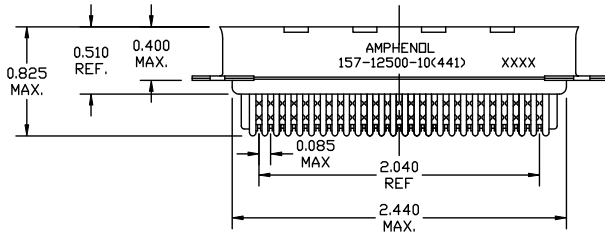
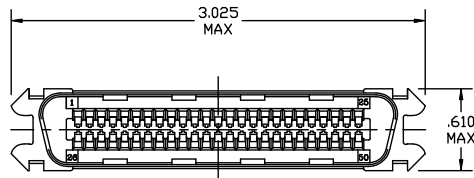


TABLE 1

CONNECTOR SIZES	AVERAGE MATING FORCE (POUNDS)
14	5
24	8
36	12
50	15
64	19

SPECIFICATIONS:

- INSULATION DISPLACEMENT CONTACTS: TO ACCOMMODATE 24-26 AWG SOLID AND 26-28 STRANDED CONNECTOR WIRES.
- DIELECTRIC: PBT GLASS FIBER RE-INFORCED, UL-94V0
- CONTACT MATERIAL: COPPER ALLOY
- CONTACT: 20 MICRO-INCHES MIN. GOLD MATING AREA: 3-5 MICRO-INCHES GOLD TERMINAL AREA: 50 MICRO-INCHES MIN. NICKEL UNDERPLATING ALL OVER.
- SHELL MATERIAL: TIN-LEAD PLATED STEEL WITH CLEAR CHROMATE COATING
- CURRENT CAPACITY: 5 AMPS/CONTACT
- VOLTAGE RATING: 700 VOLTS D.C. AT SEA LEVEL
200 VOLTS D.C. AT 70,000 FEET
- INSULATION RESISTANCE: >5000 M OHM

- DIELECTRIC WITHSTANDING VOLTAGE: 1200 VAC (RMS) AT SEA LEVEL
- CONNECTOR MATING FORCE: REFER TO TABLE 1.
- CONTACT RETENTION FORCE: 2 LBS MAX.
- DURABILITY: 250 CYCLES MIN.
- VIBRATION: NO INTERRUPTIONS < 1u SEC.
- OPERATING TEMPERATURE: -55°C TO +105°C (-67°F TO +221°F)

ITEM NO.	PART OR IDENTIFICATION NO.	NOMENCLATURE OR DESCRIPTION	QTY REQD.
PARTS LIST			
UNLESS OTHERWISE SPECIFIED TOLERANCES		APPROVAL	DATE
U.S. METRIC		DRAWN Y.M. LEE	08/15/01
.X +/- 0.020		CHECKED Y.M. LEE	08/15/01
.XX +/- 0.010		CHECKED	
.XXX +/- 0.005		Amphenol Amphenol East Asia Limited Manufacturing Operation	
FRACTIONS +/-			
ANGLES +/- 1°		TITLE 50 CONTACT PLUG ASSEMBLY ADAPTED FOR SPRING LATCH WITH "GROUNDING" DIMPLES	
FOR MATERIALS AND FINISHES SEE NOTES		DRAWING FILE: \DRAWING\157\1571250010441.DWG	SIZE DRAWING NO. REV.
REMOVE SHARP EDGES		ANGLE OF PROJECTION	A3 157-12500-10(441) A
DIMENSIONS			SCALE NONE SHEET 1 OF 1
U.S. INCHES			
-(METRIC)-			