

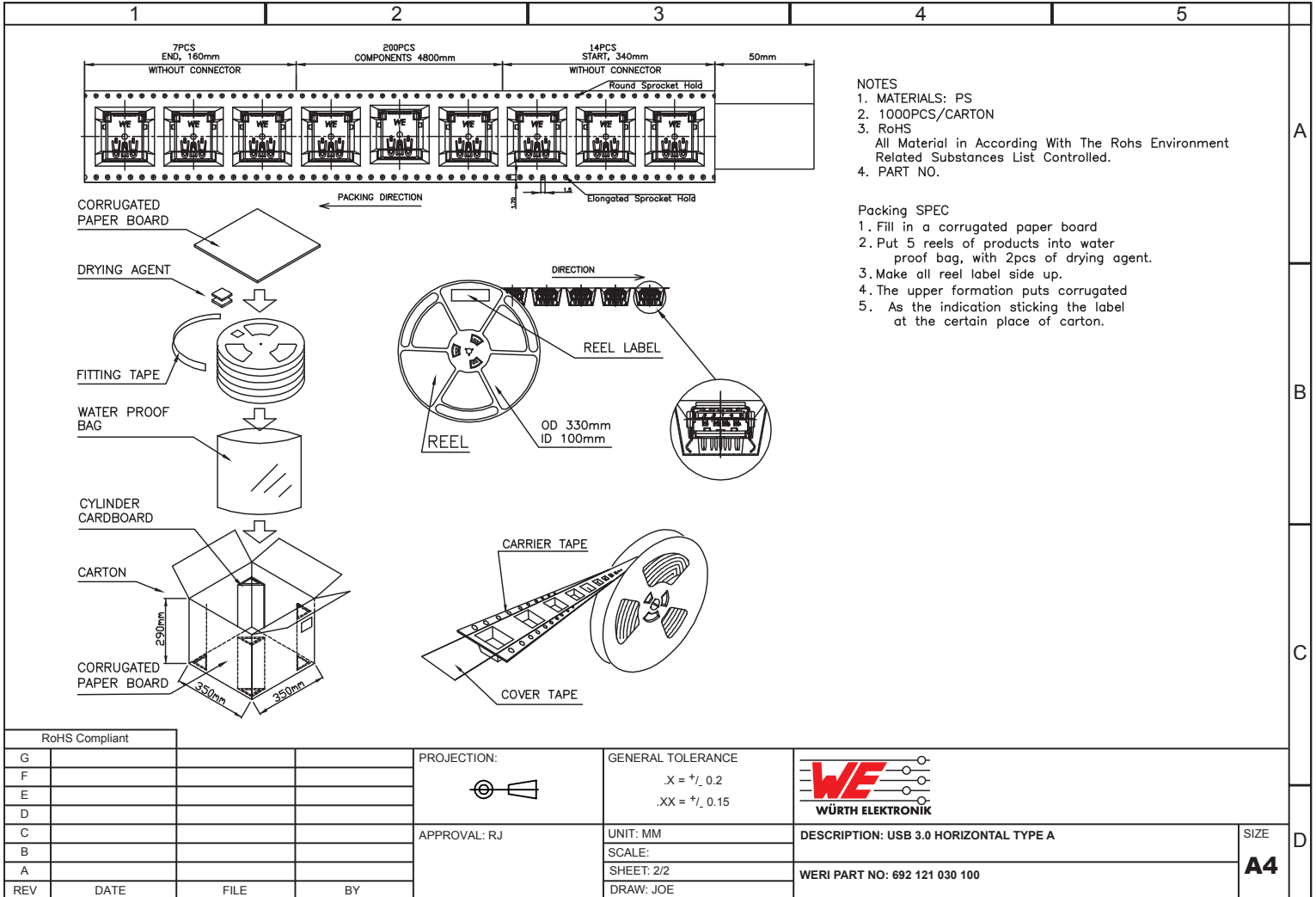
1		2		3		4		5	
				<p>TECHNICAL CHARACTERISTICS</p> <p>MATERIAL INSULATOR: LCP FLAMABILITY RATING: UL94-V0 COLOR: BLUE CONTACT MATERIAL: PHOSPHORE BRONZE CONTACT TYPE: STAMPED CONTACT PLATING: UNDERPLATE 1.27 to 2.54 µm Ni CONTACT AREA 0.76 µm Gold SOLDER TAIL AREA 2.54 to 5.08 µm Matt Tin SHIELDING: BRASS MATT TIN PLATED</p>		<p>ENVIRONMENTAL</p> <p>OPERATING TEMPERATURE: -20 up to +85°C COMPLIANCE: RoHS & LEAD FREE AS PER DIRECTIVE 2002/95/EC HALOGEN FREE COMPLIANT AS PER IEC 61249-2-21</p>		<p>ELECTRICAL</p> <p>CURRENT RATING: - PIN 1 & PIN 4 (Vbus & corresponding ground PIN) 1.8A Max - OTHER PINS 0.25 A min WORKING VOLTAGE: 30Vac DIELECTRIC WITHSTANDING VOLTAGE: 100Vac/min INSULATION RESISTANCE: > 100MΩ CONTACT RESISTANCE: - PIN 1 & PIN 4: 30mΩ Max - OTHER PINS: 50mΩ Max IMPEDANCE: 90Ω +/- 15Ω @ 50ps RISE TIME (20-80%)</p>	
				<p>ENVIRONMENTAL</p> <p>OPERATING TEMPERATURE: -20 up to +85°C COMPLIANCE: RoHS & LEAD FREE AS PER DIRECTIVE 2002/95/EC HALOGEN FREE COMPLIANT AS PER IEC 61249-2-21</p>					
		<p>CONNECTOR FRONT EDGE</p> <p>PCB LAYOUT - COMPONENT VIEW</p>		<p>MECHANICAL</p> <p>INSERTION FORCE: 35.0N Max EXTRACTION FORCE: 10.0N min QUALITY CLASS: 5000 MATING CYCLES</p>		<p>SOLDERING</p> <p>WAVE & REFLOW PROCESS AS PER JEDEC J-STD-020D</p>		<p>PACKAGING</p> <p>TAPE & REEL</p>	
RoHS Compliant									
G				PROJECTION:	GENERAL TOLERANCE			<p>DESCRIPTION: USB 3.0 HORIZONTAL TYPE A</p>	
F					.X = + _I 0.2 .XX = + _I 0.15				
E								<p>A4</p>	
D									
C				APPROVAL: RJ	UNIT: MM				
B					SCALE:				
A	04-AUG-10	PDF	JP		SHEET: 1/2	WERI PART NO: 692 121 030 100			
REV	DATE	FILE	BY		DRAW: JOE				

A

B

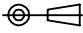

C

D



- NOTES
1. MATERIALS: PS
 2. 1000PCS/CARTON
 3. RoHS
All Material in According With The Rohs Environment Related Substances List Controlled.
 4. PART NO.

- Packing SPEC
1. Fill in a corrugated paper board
 2. Put 5 reels of products into water proof bag, with 2pcs of drying agent.
 3. Make all reel label side up.
 4. The upper formation puts corrugated
 5. As the indication sticking the label at the certain place of carton.

RoHS Compliant				PROJECTION: 	GENERAL TOLERANCE .X = +/- 0.2 .XX = +/- 0.15		DESCRIPTION: USB 3.0 HORIZONTAL TYPE A	SIZE
G								A4
F								
E								
D								
C				APPROVAL: RJ	UNIT: MM	WERI PART NO: 692 121 030 100		
B					SCALE:			
A					SHEET: 2/2			
REV	DATE	FILE	BY		DRAW: JOE			