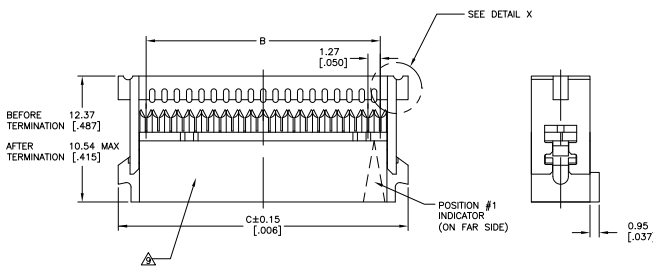


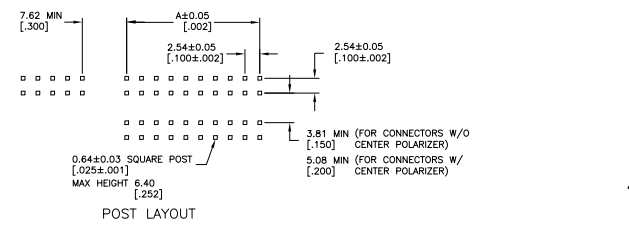
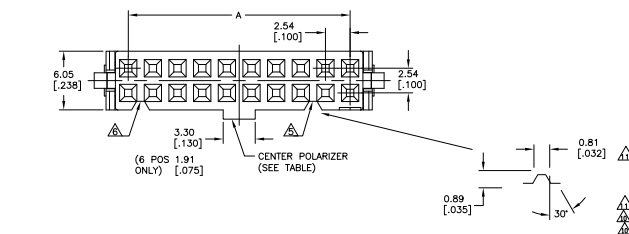
THIS DRAWING IS UNAPPROVED
 ALL RIGHTS RESERVED

REV	DATE	DESCRIPTION	BY	CHK
00				
01		REVISED PER EDD-11-004835		

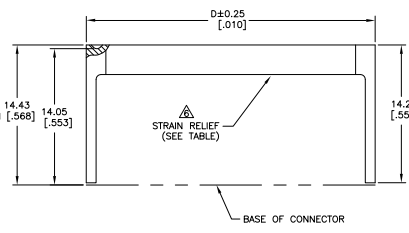


POLARIZING KEY
 TYCO PART NUMBER: 1-1437023-2
 T&B PART NUMBER (REF): 609-0000
 PURCHASE SEPARATELY

- 20 POSITION CONNECTOR ASSEMBLY SHOWN.
- MOLDED PARTS: THERMOPLASTIC, UL94V-0 RATED, COLOR BLUE. CONTACTS: BERYLLIUM COPPER.
- CONTACTS: 0.0007[.00030] MIN GOLD ON MATING AREA, 0.00254-0.00508[.00100-.00200] BRIGHT TIN LEAD ON TERMINATION END, ALL OVER 0.00127[.000050] MIN NICKEL ON ENTIRE CONTACT.
- CONTACTS: 0.00127[.000050] MIN GOLD ON MATING AREA, 0.00254-0.00508[.00100-.00200] BRIGHT TIN LEAD ON TERMINATION END, ALL OVER 0.00127[.000050] MIN NICKEL ON ENTIRE CONTACT.
- POLARIZER FEATURE DOES NOT EXIST ON POSITION #1 END FOR 14 POSITION AND SMALLER ASSEMBLIES.
- POLARIZER FEATURE DOES NOT EXIST ON THIS END FOR 6 POSITION ASSEMBLY.
- FOR TERMINATION OF 28 OR 30 AWG STRANDED PVC INSULATED FLAT RIBBON CABLE.
- STRAIN RELIEF PACKAGED SEPARATELY AND SHIPPED WITH ASSEMBLY.
- DATE CODE STAMPED ON THIS SIDE OF CONNECTOR.
- 6 POSITION CONNECTORS EXCLUDED.
- ALTERNATE COVER END APPLIES TO INDICATED NUMBERS.
- OBsolete PARTS: OBSOLETE DIS STREAMLING PER D.RENAUD/D.SINIS



ELECTRICAL PROPERTIES	
CURRENT RATING	1 AMP
INSULATION RESISTANCE	>1 x 10 ¹¹ OHMS @ 500 VDC
DIV.	>500 VRMS AT SEA LEVEL
ENVIRONMENTAL PROPERTIES	
TEMPERATURE RATING	-55°C TO 125°C



REV	DATE	DESCRIPTION	BY	CHK	REV	DATE	DESCRIPTION	BY	CHK
OBsolete	YES	YES	85.75(3.372)	85.75(3.376)	80.01(3.150)	78.74(3.100)	64	609-6441	1-1437022-5
OBsolete	NO	YES	-	85.75(3.376)	80.01(3.150)	78.74(3.100)	64	609-6430	1-1437022-2
SUPERSEDED BY 3-165828-4	YES	YES	67.87(2.672)	67.97(2.676)	62.23(2.450)	60.96(2.400)	50	609-5041	8-1437021-3
SUPERSEDED BY 3-165828-3	NO	YES	-	67.97(2.676)	62.23(2.450)	60.96(2.400)	50	609-5030	7-1437021-4
SUPERSEDED BY 4-165828-3	YES	NO	67.87(2.672)	67.97(2.676)	62.23(2.450)	60.96(2.400)	50	609-5001M	7-1437021-1
SUPERSEDED BY 4-165828-3	NO	NO	-	67.97(2.676)	62.23(2.450)	60.96(2.400)	50	609-5000M	6-1437021-8
SUPERSEDED BY 3-165828-1	YES	YES	55.17(2.172)	55.27(2.176)	49.53(1.950)	48.26(1.900)	40	609-4041	5-1437021-7
SUPERSEDED BY 3-165828-0	NO	YES	-	55.27(2.176)	49.53(1.950)	48.26(1.900)	40	609-4030	5-1437021-0
SUPERSEDED BY 4-165828-1	YES	NO	55.17(2.172)	55.27(2.176)	49.53(1.950)	48.26(1.900)	40	609-4001M	4-1437021-7
SUPERSEDED BY 4-165828-1	NO	NO	-	55.27(2.176)	49.53(1.950)	48.26(1.900)	40	609-4000M	4-1437021-4
SUPERSEDED BY 3-165828-0	YES	YES	50.09(1.972)	50.19(1.976)	44.45(1.750)	43.18(1.700)	36	609-3641	4-1437021-2
SUPERSEDED BY 3-165828-0	NO	YES	-	50.19(1.976)	44.45(1.750)	43.18(1.700)	36	609-3630	4-1437021-0
SUPERSEDED BY 4-165828-0	YES	YES	47.55(1.872)	47.65(1.876)	41.91(1.650)	40.64(1.600)	34	609-3441	3-1437021-4
SUPERSEDED BY 4-165828-0	NO	YES	-	47.65(1.876)	41.91(1.650)	40.64(1.600)	34	609-3430	2-1437021-6
SUPERSEDED BY 165828-8	YES	NO	47.55(1.872)	47.65(1.876)	41.91(1.650)	40.64(1.600)	34	609-3401M	2-1437021-2
SUPERSEDED BY 165828-8	NO	NO	-	47.65(1.876)	41.91(1.650)	40.64(1.600)	34	609-3400M	1-1437021-9
OBsolete	NO	YES	37.39(1.472)	37.49(1.476)	31.75(1.250)	30.48(1.200)	26	609-2641	1-1437021-4
OBsolete	NO	YES	-	37.49(1.476)	31.75(1.250)	30.48(1.200)	26	609-2630	1-1437021-0
SUPERSEDED BY 3-165828-5	YES	NO	37.39(1.472)	37.49(1.476)	31.75(1.250)	30.48(1.200)	26	609-2601M	1437021-2
SUPERSEDED BY 3-165828-5	NO	NO	-	37.49(1.476)	31.75(1.250)	30.48(1.200)	26	609-2600M	9-1437020-8
SUPERSEDED BY 3-165828-5	YES	YES	34.85(1.372)	34.95(1.376)	29.21(1.150)	27.94(1.100)	24	609-2441	9-1437020-6
SUPERSEDED BY 3-165828-5	NO	YES	-	34.95(1.376)	29.21(1.150)	27.94(1.100)	24	609-2430	9-1437020-3
SUPERSEDED BY 1-165828-4	NO	NO	-	34.95(1.376)	29.21(1.150)	27.94(1.100)	24	609-2400M	9-1437020-1
SUPERSEDED BY 1-165828-4	YES	YES	29.77(1.172)	29.87(1.176)	24.13(950)	22.86(900)	20	609-2041	8-1437020-8
SUPERSEDED BY 3-165828-0	NO	YES	-	29.87(1.176)	24.13(950)	22.86(900)	20	609-2030	7-1437020-9
SUPERSEDED BY 4-1437020-6	NO	NO	-	29.77(1.172)	24.13(950)	22.86(900)	20	609-2001M	7-1437020-6
SUPERSEDED BY 4-1437020-6	NO	NO	-	29.87(1.176)	24.13(950)	22.86(900)	20	609-2000M	7-1437020-2
SUPERSEDED BY 3-165828-0	NO	NO	-	29.87(1.176)	24.13(950)	22.86(900)	20	609-2000MPOS	7-1437020-9
OBsolete	YES	YES	24.69(.972)	24.79(.976)	19.05(.750)	17.78(.700)	16	609-1641	6-1437020-8
OBsolete	NO	YES	-	24.79(.976)	19.05(.750)	17.78(.700)	16	609-1630	6-1437020-11
SUPERSEDED BY 1-165828-0	YES	NO	24.69(.972)	24.79(.976)	19.05(.750)	17.78(.700)	16	609-1601M	5-1437020-9
SUPERSEDED BY 1-165828-0	NO	NO	-	24.79(.976)	19.05(.750)	17.78(.700)	16	609-1600M	5-1437020-6
SUPERSEDED BY 165828-9	YES	YES	22.25(.872)	22.25(.876)	16.51(.650)	15.24(.600)	14	609-1441	5-1437020-2
SUPERSEDED BY 165828-9	NO	YES	-	22.25(.876)	16.51(.650)	15.24(.600)	14	609-1430	4-1437020-6
OBsolete	YES	NO	22.15(.872)	22.25(.876)	16.51(.650)	15.24(.600)	14	609-1401M	4-1437020-4
OBsolete	NO	NO	-	22.25(.876)	16.51(.650)	15.24(.600)	14	609-1400M	4-1437020-2
SUPERSEDED BY 165828-2	YES	YES	17.07(.672)	17.07(.672)	11.43(.450)	10.16(.400)	10	609-1041	3-1437020-9
SUPERSEDED BY 165828-2	NO	YES	-	17.07(.672)	11.43(.450)	10.16(.400)	10	609-1030	3-1437020-0
SUPERSEDED BY 165828-2	YES	NO	17.07(.672)	17.07(.672)	11.43(.450)	10.16(.400)	10	609-1001M	2-1437020-7
SUPERSEDED BY 165828-2	NO	NO	-	17.07(.672)	11.43(.450)	10.16(.400)	10	609-1000M	2-1437020-4
SUPERSEDED BY 165828-2	YES	YES	11.99(.472)	12.09(.476)	6.35(.250)	5.08(.200)	6	609-0641	2-1437020-2
SUPERSEDED BY 165828-2	NO	YES	-	12.09(.476)	6.35(.250)	5.08(.200)	6	609-0630	2-1437020-0
SUPERSEDED BY 165828-2	YES	NO	11.99(.472)	12.09(.476)	6.35(.250)	5.08(.200)	6	609-0601M	1-1437020-9
SUPERSEDED BY 165828-2	NO	NO	-	12.09(.476)	6.35(.250)	5.08(.200)	6	609-0600M	1-1437020-8

THIS DRAWING IS A CONTROLLED DOCUMENT. SEE REFERENCE TO THE BOM FOR THE BOM NUMBER. SEE TABLE FOR THE BOM NUMBER.

TE Connectivity
 CONNECTOR ASSEMBLY, FEMALE SOCKET TRANSITION

SIZE: 11
 DATE: 11/11/11
 REV: 1