

DO NOT SCALE  
DIMENSIONS IN mm

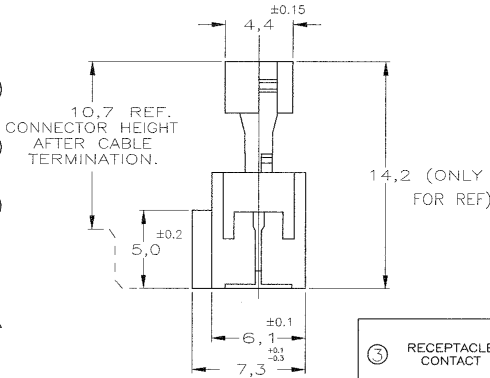
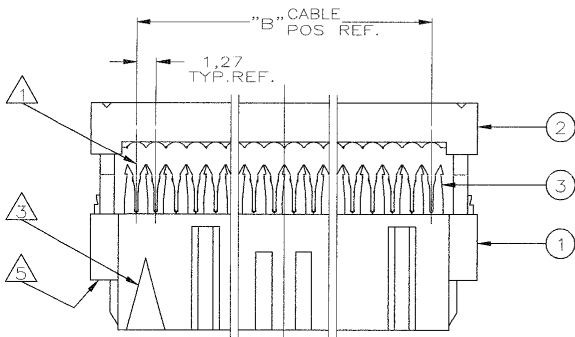
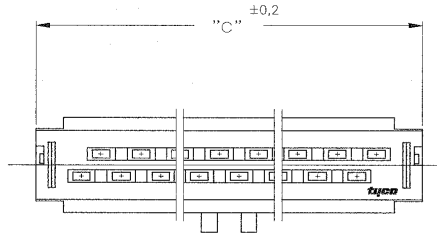
METRIC



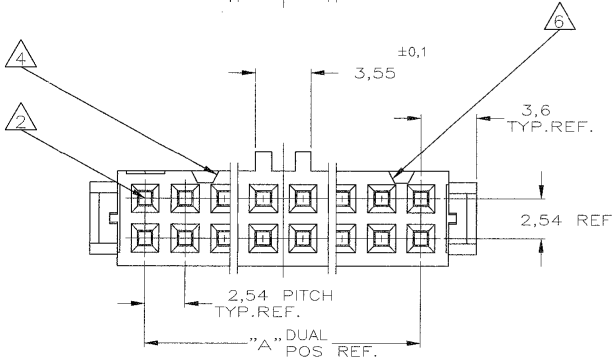
NOTES:

- △ CONNECTOR IS DESIGNED FOR FLAT RIBBON CABLE ON 1,27 CENTERS . FOR CABLE REQUIREMENTS SEE AMP APPLICATION SPECIFICATION 114-19008.
- △ THESE RECEPTACLE CONNECTORS MATE WITH 0,64 <sup>#0,05</sup> mm SQUARE OR ROUND POSTS ON 2,54mm GRID.
- △ MARK INDICATING FIRST CABLE POSITION REFERRING TO CONTACT POSITION.
- △ THERE IS NO POLARIZATION-SLOT AT THIS END IN 4, 6, 8, 10 AND 14 POS CONNECTORS.
- △ THESE CONNECTORS CAN BE USED IN CONJUNCTION WITH STRAIN-RELIEF COVERS OF PARTNR: 182762.
- △ THERE IS NO POLARIZATION-SLOT AT THIS END IN 4, 6, AND 8 POS CONNECTORS.

7 PRODUCT SPECIFICATION 108-19033.



DIM."C"	"B" CABLE POS.	"A" DUAL POS.	PARTNUMBER
85,9	64	32	6-215911-4
80,8	60	30	6-215911-0
68,1	50	25	5-215911-0
60,5	44	22	4-215911-4
55,4	40	20	4-215911-0
47,8	34	17	3-215911-4
42,7	30	15	3-215911-0
37,6	26	13	2-215911-6
30,0	20	10	2-215911-0
24,9	16	8	1-215911-6
22,4	14	7	1-215911-4
17,3	10	5	1-215911-0
14,8	8	4	0-215911-8
12,2	6	3	0-215911-6
9,7	4	2	0-215911-4



D1	ET00-0093-03	SS	23-05-03
LTR	REVISION RECORD	DR	DATE

③ RECEPTACLE CONTACT	PHOSPHORBRONZE Cu Sn4	AT CONTACT-PLACE: 0,2  GOLD AT WIRING END: 2,5  TIN ENTIRE UNDERCOATING: 1,27  NICKEL
② COVER	THERMOPLASTIC POLYESTER UL 94 -V0	GREY RAL 7032 (ONLY FOR REF.)
① HOUSING		
COMPONENT NAME	MATERIAL	PLATING / COLOUR

**CUSTOMER DRAWING**

FOR REFERENCE ONLY  
WILL NOT BE UPDATED

DR. W.R. VERBEET DATE 4-2'88  
CHK. R. VERSTIJNEN DATE 5-2'88

WIRE RANGE - / -  
INSUL. RANGE - / -

NAME AMP-LATCH\_MIL-TYPE  
RECEPTACLE\_CONNECTOR  
ASSEMBLY\_(SYMMETRIC\_COVER)

© COPYRIGHT 19 88 BY AMP-HOLLAND B.V.  
ALL INTERNATIONAL RIGHTS RESERVED.  
AMP PRODUCTS MAY BE COVERED BY U.S. AND FOREIGN PATENTS AND/OR PATENTS PENDING.

RELEASED FOR PUBLICATION 4JAN,1988

SIZE A3 SHEET 1 OF 1 DWG. No. C-215911 REV.LTR. D1

8 | 7 | 6 | 5 | 4 | 3 | 2 | 1