

Customer Information Sheet

DRAWING No. M60-604XX45

SHEET 2 OF 2

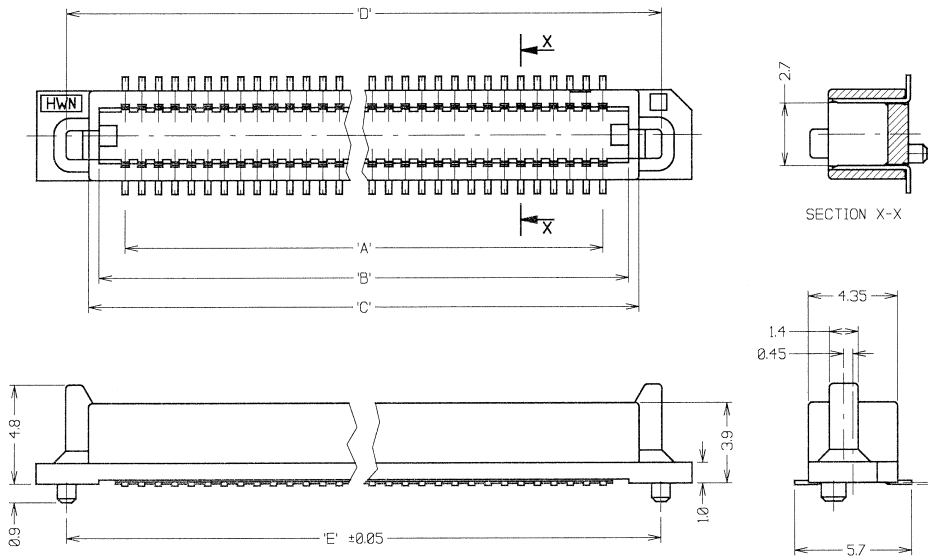
IF IN DOUBT - ASK

(C)

NOT TO SCALE

THIRD ANGLE PROJECTION

ALL DIMENSIONS IN mm



PART No.	No. OF CONTACTS	'A'	'B'	'C'	'D'	'E'	'F'
M60-6041045	10 + 10	7.2	9.7	10.7	12.9	12.8	15.8
M60-6041545	15 + 15	11.2	13.7	14.7	16.9	16.8	19.8
M60-6042045	20 + 20	15.2	17.7	18.7	20.9	20.8	23.8
M60-6042545	25 + 25	19.2	21.7	22.7	24.9	24.8	27.8
M60-6043045	30 + 30	23.2	25.7	26.7	28.9	28.8	31.8
M60-6044045	40 + 40	31.2	33.7	34.7	36.9	36.8	39.8
M60-6045045	50 + 50	39.2	41.7	42.7	44.9	44.8	47.8

SPECIFICATIONS:

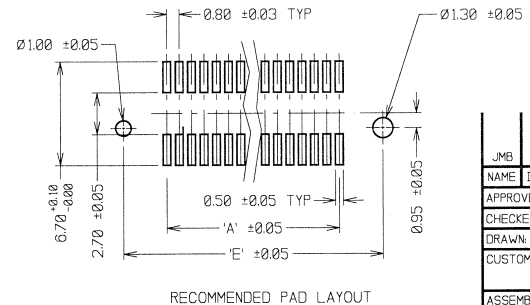
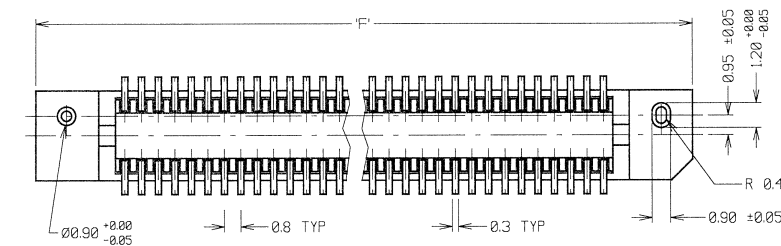
MATERIAL:
 MOULDING = LCP, UL94V-0
 CONTACTS = PHOSPHOR BRONZE

FINISH:
 CONTACTS:
 0.05µ MIN GOLD OVER 1.27µ MIN NICKEL
 0.5µ MIN GOLD ON CONTACT AREA.

ELECTRICAL:
 CURRENT RATING = 0.5 AMPS
 VOLTAGE RATING = 100V AC
 DIELECTRIC WITHSTANDING VOLTAGE = 300V AC (1 MINUTE)
 INSULATION RESISTANCE = 1000 MEGOHMS MIN (250V DC)
 CONTACT RESISTANCE = 40 MILLIOHMS MAX

MECHANICAL:
 DURABILITY = 30 CYCLES

ENVIRONMENTAL:
 TEMPERATURE RANGE = -55°C TO +100°C
 PACKING = TUBE



- NOTES:**
- MATES WITH M60-614XX45 OR M60-616XX45 TO GIVE BOARD-TO-BOARD HEIGHTS OF 5mm AND 7mm RESPECTIVELY.
 - ALL TOLERANCES ±0.30 UNLESS OTHERWISE STATED.

JMB	9	17.07.06	9324
NAME	ISS.	DATE	C/NOTE
APPROVED: <i>[Signature]</i>			
CHECKED: <i>[Signature]</i>			
DRAWN: WJ BOURNE			
CUSTOMER REF.:			
ASSEMBLY DRG:			

ORDER CODE:
M60-604XX45
 No. OF CONTACTS
 10, 15, 20, 25, 30, 40, 50

HARWIN			THIS DRAWING AND ANY INFORMATION OR DESCRIPTIVE MATTER SET OUT HEREON ARE CONFIDENTIAL AND COPYRIGHT PROPERTY OF THE HARWIN GROUP AND MUST NOT BE DISCLOSED, LOANED, COPIED OR USED FOR MANUFACTURING, TENDERING OR FOR ANY OTHER PURPOSE WITHOUT THEIR WRITTEN PERMISSION.	TOLERANCES XX - ± 0.10mm XXX - ± 0.25mm XXXX - ± 0.10mm XXXX - ± 0.10mm ANGLES - ±5° UNLESS STATED	MATERIAL: SEE ABOVE	TITLE: 0.80mm PITCH SMT SOCKET CONNECTOR (4mm HIGH)
HARWIN USA TEL: 003 893 5376 FAX: 003 893 5390 mls@harwin.com	HARWIN Europe (UK) TEL: 023 9231 4545 FAX: 023 9231 4590 mls@harwin.co.uk	HARWIN Asia TEL: +85 6 779 4900 FAX: +85 6 773 3868 mls@harwin.com.sg		FINISH: SEE ABOVE S/AREA: mm ²	DRAWING NUMBER: M60-604XX45	SHIT 2 OF 2