

Customer Information Sheet

DRAWING No.: M40-620XXXX

SHEET 2 OF 2

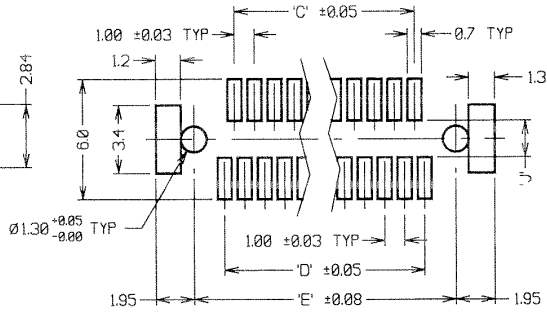
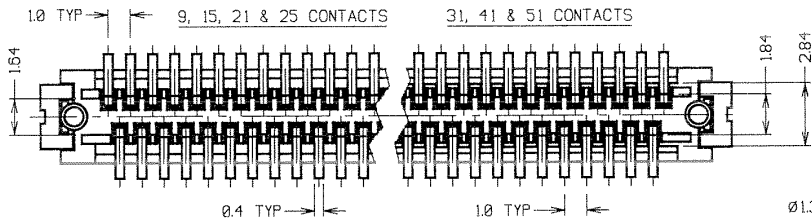
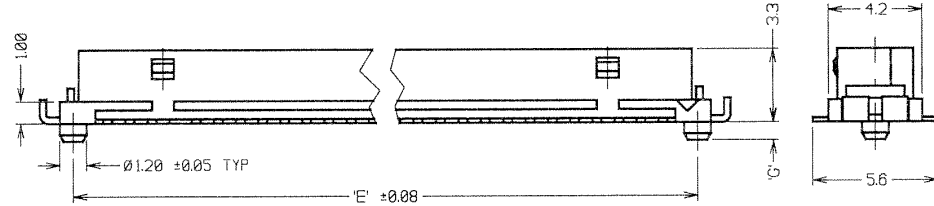
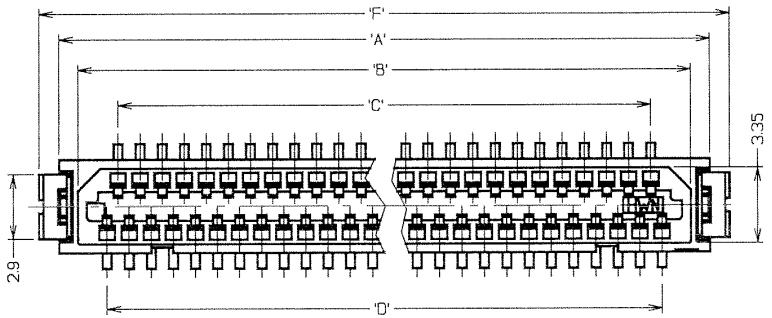
IF IN DOUBT - ASK

(C)

NOT TO SCALE

THIRD ANGLE PROJECTION

ALL DIMENSIONS IN mm



PART No.	No. OF CONTACTS	'A'	'B'	'C'	'D'	'E'	'F'	'G'	'J'
M40-62009XX	9	8.3	6.5	3.0	4.0	7.1	10.1	1.0	1.84±0.1
M40-62015XX	15	11.3	9.5	6.0	7.0	10.1	13.1	1.0	1.84±0.1
M40-62021XX	21	14.3	12.5	9.0	10.0	13.1	16.1	1.0	1.84±0.1
M40-62025XX	25	16.3	14.5	11.0	12.0	15.1	18.1	1.0	1.84±0.1
M40-62031XX	31	19.3	17.5	14.0	15.0	18.1	21.1	0.8	3.0±0.1
M40-62041XX	41	24.3	22.5	19.0	20.0	23.1	26.1	0.8	3.0±0.1
M40-62051XX	51	29.3	27.5	24.0	25.0	28.1	31.1	0.8	3.0±0.1

SPECIFICATIONS:

MATERIAL:
 MOULDING = PA UL94V-0 (NATURAL)
 CONTACTS = PHOSPHOR BRONZE
 RETAINER = BRASS

FINISH:
 CONTACTS = 1-2µ 100% REFLOW TIN
 RETAINER = 2-6µ 100% MATTE TIN OVER 1.27µ MIN NICKEL

ELECTRICAL:
 CURRENT RATING = 0.5 AMPS
 VOLTAGE RATING = 100V AC
 DIELECTRIC STRENGTH = 250V AC FOR 1 MINUTE
 INSULATION RESISTANCE = 500 MEGOHMS MIN (100V DC)
 CONTACT RESISTANCE = 50 MILLIOHMS MAX (0.1A DC)

MECHANICAL:
 DURABILITY = 30 CYCLES

ENVIRONMENTAL:
 TEMPERATURE RANGE = -55°C TO +85°C

PACKING:
 TUBE

ORDER CODE:
M40-620XX46

No. OF CONTACTS
 9, 15, 21, 25, 31,
 41, 51
 FINISH:
 46 = 100% TIN

NOTES:
 1. MATES WITH M40-600XXXX TO GIVE 4.3mm BOARD-TO-BOARD HEIGHT.
 2. ALL TOLERANCES ±0.30 UNLESS OTHERWISE STATED.

HARWIN

HARWIN USA
 TEL: 803 893 5376
 FAX: 803 893 5398
 mis@harwin.com

HARWIN Europe (UK)
 TEL: 023 9231 4545
 FAX: 023 9231 4590
 mis@harwin.co.uk

HARWIN Asia
 TEL: +65 6 779 4908
 FAX: +65 6 779 3868
 mis@harwin.com.sg

THIS DRAWING AND ANY INFORMATION OR DESCRIPTIVE MATTER SET OUT HEREON ARE CONFIDENTIAL AND COPYRIGHT PROPERTY OF THE HARWIN GROUP AND MUST NOT BE DISCLOSED, LOANED, COPIED OR USED FOR MANUFACTURING, TENDERING OR FOR ANY OTHER PURPOSE WITHOUT THEIR WRITTEN PERMISSION.

TOLERANCES
 X = ±1mm
 XX = ±0.25mm
 XXX = ±0.10mm
 XXXX = ±0.01mm
 ANGLES = ±5°
 UNLESS STATED

MATERIAL:
 SEE ABOVE

FINISH: SEE ABOVE

S/AREA: mm²

TITLE: 100mm PITCH SMT SOCKET CONNECTOR

DRAWING NUMBER: M40-620XXXX

SHT 2 OF 2

RA	9	07/06/07	9776
NAME	ISS.	DATE	C/NOTE
APPROVED:	<i>[Signature]</i>		
CHECKED:	<i>[Signature]</i>		
DRAWN:	W. J. BOURNE		
CUSTOMER REF.:			
ASSEMBLY DRG.:			