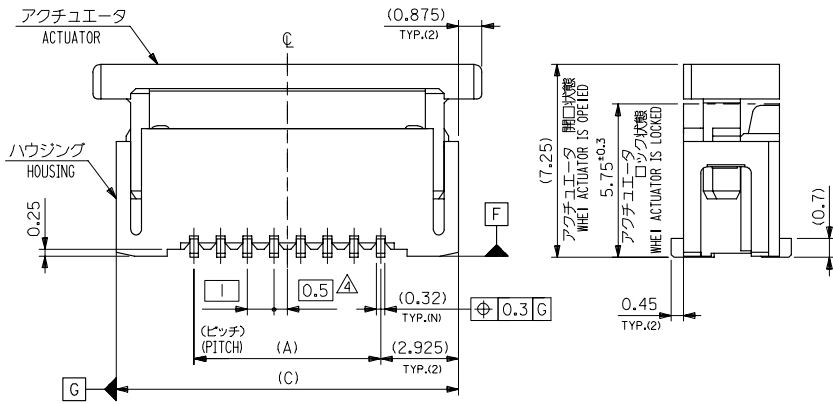
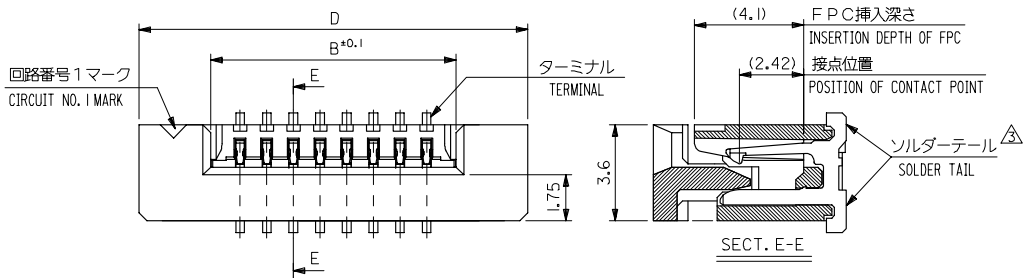


10 9 8 7 6 5 4 3 2 1



注記 (NOTES):

- 材料 (MATERIAL)  
 ハウジング (HOUSING): 46NYLON, UL94V-0  
 アクチュエータ (ACTUATOR): PPS, UL94V-0  
 ターミナル (TERMINAL): 1.0mm青銅 (±0.32) PHOS-BRO  
 鍍: 2%ビスマスメッキ 1.0マイクロナメートル以上  
 TIN 2% BISMUTH 1.0 MICROMETER MINIMUM  
 ニッケル下地 1.0マイクロナメートル以上  
 NICKEL (UNDER PLATING) 1.0 MICROMETER MINIMUM
- エンボステープ梱包時は、アクチュエータがロックした状態とする。  
 IN THE PACKAGE, ACTUATOR OF PART NO. 52610-\*\*16 SHOULD BE LOCKED.
- ソルダーテール半田付け面のズレ量は、基準面 [F] に対し上方向 0.05 MAX., 下方向 0.15 MAX. とする。  
 MISALIGNMENT OF SOLDER TAILS FROM [F] UPPER DIRECTION: 0.05 MAX., LOWER DIRECTION: 0.15 MAX.
- 偶数極に適用。  
 APPLY FOR EVEN CIRCUIT.
- 本製品は 52610-\*\*17 の鉛フリー品です

|  |                   |            |             |              |                                       |                            |                       |   |  |                           |
|--|-------------------|------------|-------------|--------------|---------------------------------------|----------------------------|-----------------------|---|--|---------------------------|
| REVISED<br>REV. B                                    | EC NO. J2005-0105 | 2004/07/13 | 2004/07/13  | 2004/07/14   | GENERAL TOLERANCES (UNLESS SPECIFIED) | DIMENSION STYLE<br>MM ONLY |                       | SCALE<br>---  | MODEL NO.<br>52610-**16                                  |                           |
|  | DRW: NABEI        | CHK: KTOJO | APP: NIKITA | DESCRIPTION  |                                       | DRAWN BY<br>TUENO          | DATE<br>'03/12/12     | TITLE   | DESIGN UNITS<br>METRIC                                   |                           |
|  |                   |            |             |              |                                       | 10 UNDER ±0.2              | CHECKED BY<br>MSASAO  | DATE<br>'03/12/12   | 1.0 FPC CONNECTOR<br>Z.I.F. FOR SMT.(ST.)<br>-LEAD FREE- | THIRD ANGLE<br>PROJECTION |
|  |                   |            |             |              |                                       | 10 OVER 30 UNDER ±0.25     | APPROVED BY<br>MSASAO | DATE<br>'03/12/12   | MOLEX INCORPORATED                                       |                           |
|  |                   |            |             | 30 OVER ±0.3 | ANGULAR ±3 °                          | MATERIAL NO.<br>SEE CHART  |                       | DOCUMENT NO.<br>SD-52610-**16   | SHEET NO.<br>1 OF 2                                      |                           |
| DRAFT WHERE APPLICABLE MUST REMAIN WITHIN DIMENSIONS |                   |            |             |              | SIZE<br>A3                            |                            |                       | THIS DRAWING CONTAINS INFORMATION THAT IS PROPRIETARY TO MOLEX INCORPORATED AND SHOULD NOT BE USED WITHOUT WRITTEN PERMISSION |  |                           |

10 9 8 7 6 5 4 3 2 1

F

E

D

C

B

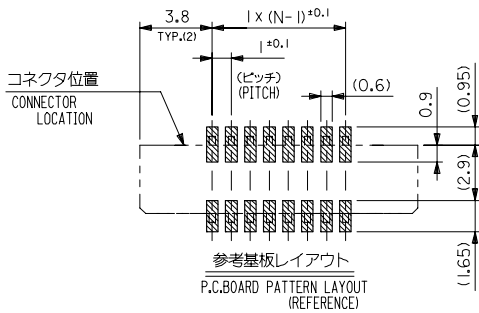
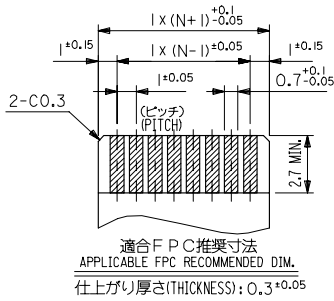
A

9 8 7 6 5 4 3 2 1

EN-02JA(021)

FPCについて:  
 打抜き方向は導体側から補強板側を推奨致します。  
 補強フィルム材質はポリイミドを推奨致します。  
 接着剤は熱硬化接着剤を推奨致します。

ABOUT FPC:  
 RECOMMENDED PUNCHER DIRECTION : FROM CONDUCTOR SIDE TO STIFFENER BOARD SIDE.  
 RECOMMENDED MATERIAL :  
 STIFFENER FILM : POLYIMIDE  
 BONDING AGENT : THERMOSETTING BONDING AGENT

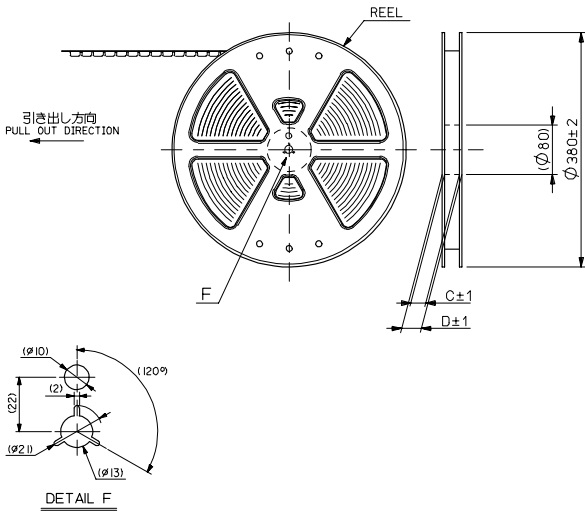


|            |       |       |     |            |            |   |
|------------|-------|-------|-----|------------|------------|---|
| 36.6       | 34.85 | 31.2  | 29  | 52610-3016 | 30         |   |
| 35.6       | 33.85 | 30.2  | 28  | -2916      | 29         |   |
| 34.6       | 32.85 | 29.2  | 27  | -2816      | 28         |   |
| 33.6       | 31.85 | 28.2  | 26  | -2716      | 27         |   |
| 32.6       | 30.85 | 27.2  | 25  | -2616      | 26         |   |
| 31.6       | 29.85 | 26.2  | 24  | -2516      | 25         |   |
| 30.6       | 28.85 | 25.2  | 23  | -2416      | 24         |   |
| 29.6       | 27.85 | 24.2  | 22  | -2316      | 23         |   |
| 28.6       | 26.85 | 23.2  | 21  | -2216      | 22         |   |
| 27.6       | 25.85 | 22.2  | 20  | -2116      | 21         |   |
| 26.6       | 24.85 | 21.2  | 19  | -2016      | 20         |   |
| 25.6       | 23.85 | 20.2  | 18  | -1916      | 19         |   |
| 24.6       | 22.85 | 19.2  | 17  | -1816      | 18         |   |
| 23.6       | 21.85 | 18.2  | 16  | -1716      | 17         |   |
| 22.6       | 20.85 | 17.2  | 15  | -1616      | 16         |   |
| 21.6       | 19.85 | 16.2  | 14  | -1516      | 15         |   |
| 20.6       | 18.85 | 15.2  | 13  | -1416      | 14         |   |
| 19.6       | 17.85 | 14.2  | 12  | -1316      | 13         |   |
| 18.6       | 16.85 | 13.2  | 11  | -1216      | 12         |   |
| 17.6       | 15.85 | 12.2  | 10  | -1116      | 11         |   |
| 16.6       | 14.85 | 11.2  | 9   | -1016      | 10         |   |
| 15.6       | 13.85 | 10.2  | 8   | -0916      | 9          |   |
| 14.6       | 12.85 | 9.2   | 7   | -0816      | 8          |   |
| 13.6       | 11.85 | 8.2   | 6   | -0716      | 7          |   |
| 52610-**16 | 12.6  | 10.85 | 7.2 | 5          | 52610-0616 | 6 |

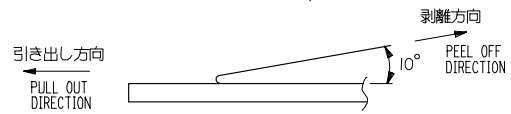
|           |   |     |   |     |           |      |
|-----------|---|-----|---|-----|-----------|------|
| MODEL NO. | D | (C) | B | (A) | MODEL NO. | CKT. |
|-----------|---|-----|---|-----|-----------|------|

|   |                                       |  |                            |                           |  |                        |                        |
|---|---------------------------------------|--|----------------------------|---------------------------|--|------------------------|------------------------|
| REVISED<br>IEC NO. J2005-0105<br>DRAWN BY CHIKAKO ITO<br>CHECKED BY CHIKAKO ITO<br>APPR. NIKITA<br>2004/07/13<br>2004/07/13<br>2004/07/14 | GENERAL TOLERANCES (UNLESS SPECIFIED) |  | DIMENSION STYLE<br>MM ONLY |                           | SCALE<br>---   | DESIGN UNITS<br>METRIC | THIRD ANGLE PROJECTION |
|   | 10 UNDER                              | ± 0.2  | DRAWN BY<br>TUENO          | DATE<br>'03/12/12         | TITLE<br>1.0 FPC CONNECTOR<br>Z.I.F. FOR SMT. (ST.)<br>-LEAD FREE- |                        |                        |
|   | 10 OVER 30 UNDER                      | ± 0.25   | CHECKED BY<br>MSASAO       | DATE<br>'03/12/12         | MOLEX INCORPORATED   |                        |                        |
|   | 30 OVER                               | ± 0.3  | APPROVED BY<br>MSASAO      | DATE<br>'03/12/12         | DOCUMENT NO.<br>SD-52610-**16                                      |                        |                        |
| ANGULAR ± 3 °   |                                       | DRAFT WHERE APPLICABLE<br>MUST REMAIN<br>WITHIN DIMENSIONS |                            | MATERIAL NO.<br>SEE CHART | SHEET NO.<br>2 OF 2  |                        |                        |
| THIS DRAWING CONTAINS INFORMATION THAT IS PROPRIETARY TO MOLEX<br>INCORPORATED AND SHOULD NOT BE USED WITHOUT WRITTEN PERMISSION          |                                       |  |                            | SIZE<br>A3                |  |                        |                        |

10 9 8 7 6 5 4 3 2 1

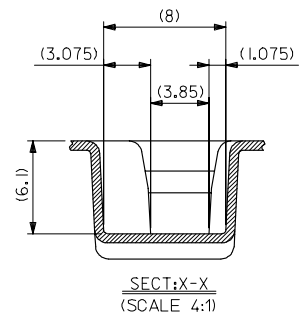
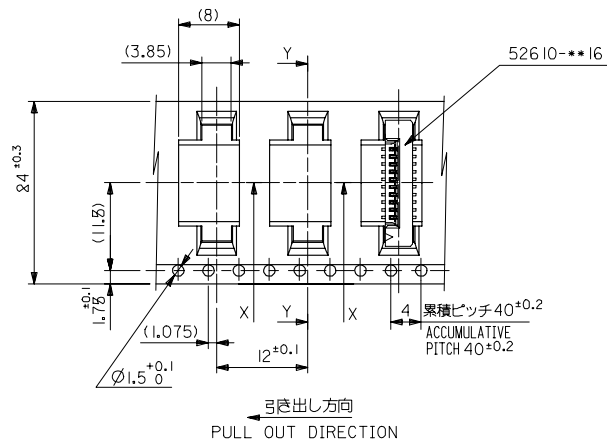
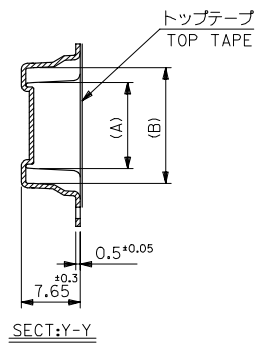


- NOTES**
- 梱包数量：1000個/リール  
NUMBER OF CONNECTORS : 1000PCS/REEL
  - リードテープ長さ LEAD TAPE LENGTH  
20PCS. MIN. トップテープ接着部 (空エンボス)  
TOP TAPE BONDED PART. (EMPTY)  
部品挿入部  
COMPONENT SUPPLIER  
末端部 (空部)  
TAIL PART (EMPTY)  
40MIN.
  - トップテープの剥離強度：0.1~1.3N (10gf~130gf) (剥離方向は下図参照)  
尚、本規格値は出荷時に適用。(但し、輸送時に剥離が発生しないこと。)  
PEELING OFF FORCE OF TOP TAPE : 0.1~1.3N (10gf~130gf)  
(PEELING DIRECTION AS SHOWN IN FOLLOWING FIG.)  
THIS REQUIREMENT SHOULD BE APPLIED AT SHIPMENT.  
PEEL OFF SHOULD NOT BE ALLOWED , DURING TRANSPORTATION.
  - 52610-\*\*-\*\*16のアクチュエータはハウジング内に押し下げた状態とする。  
詳細寸法については 製品単体図面を参照下さい。  
ACTUATOR OF PART NO. 52610-\*\*-\*\*16 SHOULD BE LOCKED.  
RE DETAILED DIMENSIONS , SEE SALES DRAWING FOR CONNECTOR.
  - 材料 (MATERIAL)  
キャリアテープ (CARRIER TAPE) : ポリプロピレン (POLYPROPYLENE)  
トップテープ (TOPTAPE) : PET , PE , PEF  
リール (REEL) : ポリスチレン (PS) <リサイクル材を含む>  
POLYSTYREN(PS) <RECYCLE MATERIAL CONTAINED>
  - 本製品は 52610-\*\*-\*\*90 の鉛フリー品です



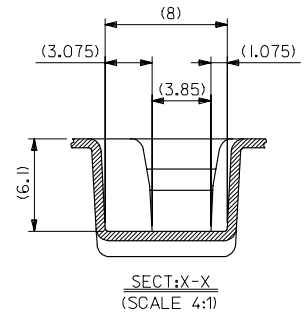
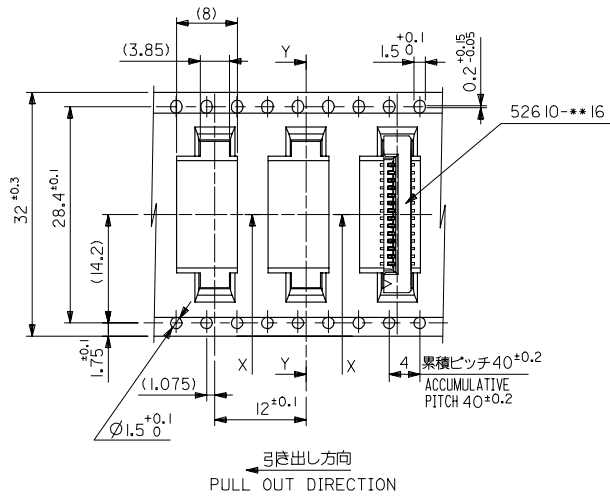
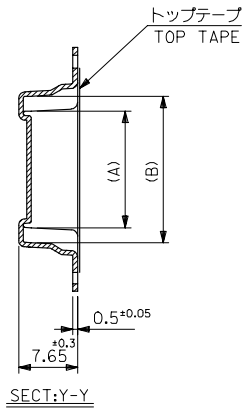
52610-\*\*-\*\*71 MODEL NO.

|   |  |  |                            |                              |  |                        |                           |
|---|--|--|----------------------------|------------------------------|--|------------------------|---------------------------|
| REVISED<br>EC NO. J2006-0384<br>DRAWN BY<br>DRWNAIDA<br>CHKD BY<br>CHKDKIYODA<br>APP. BY<br>APPR.NUKITA | GENERAL TOLERANCES<br>(UNLESS SPECIFIED) |  | DIMENSION STYLE<br>MM ONLY |                              | SCALE<br>---   | DESIGN UNITS<br>METRIC | THIRD ANGLE<br>PROJECTION |
|   | 10 UNDER                                 | ±0.2   | DRAWN BY<br>T.UENO         | DATE<br>'03/12/12            | TITLE<br>1.0 FPC CONN SMT<br>ZIF EMBSTP PKG<br>-LEAD FREE-<br><br>MOLEX INCORPORATED |                        |                           |
|   | 10 OVER 30 UNDER                         | ±0.25  | CHECKED BY<br>M.SASAO      | DATE<br>'03/12/12            |  |                        |                           |
|   | 30 OVER                                  | ±0.3   | APPROVED BY<br>M.SASAO     | DATE<br>'03/12/12            |  |                        |                           |
| ANGULAR   | ±3 °                                     | MATERIAL NO.<br>SEE CHART  |                            | DOCUMENT NO.<br>SD-52610-038 | SHEET NO.<br>1 OF 5  |                        |                           |
| DRAFT WHERE APPLICABLE<br>MUST REMAIN<br>WITHIN DIMENSIONS  |  | THIS DRAWING CONTAINS INFORMATION THAT IS PROPRIETARY TO MOLEX<br>INCORPORATED AND SHOULD NOT BE USED WITHOUT WRITTEN PERMISSION |                            |                              |  |                        |                           |



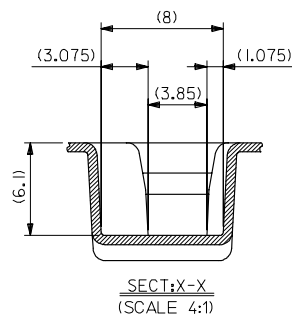
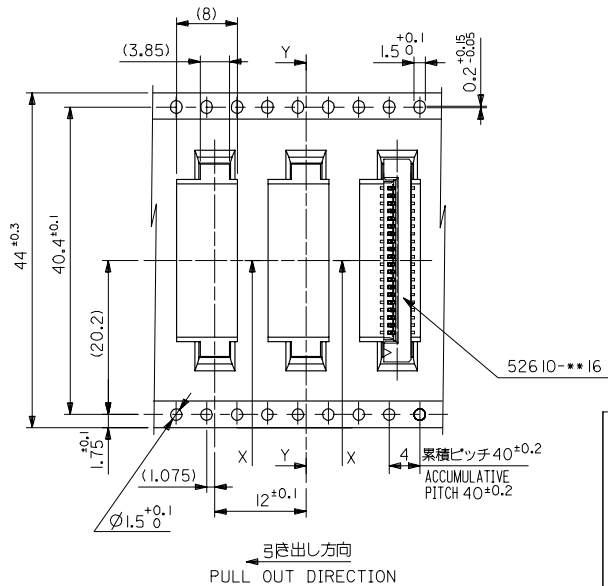
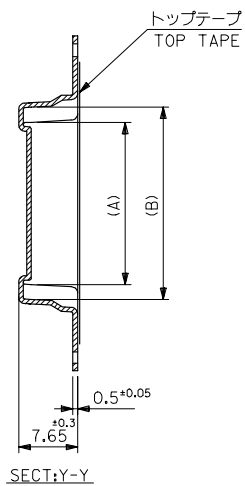
|                                |      |      |       |       |              |            |
|--------------------------------|------|------|-------|-------|--------------|------------|
| 24                             | 29.4 | 25.4 | 15.25 | 11.32 | 52610-1071   | 10         |
|                                |      |      | 14.25 | 10.32 | 52610-0971   | 9          |
|                                |      |      | 13.25 | 9.32  | 52610-0871   | 8          |
|                                |      |      | 12.25 | 8.32  | 52610-0771   | 7          |
|                                |      |      | 11.25 | 7.32  | 52610-0671   | 6          |
| キャリアテープ幅<br>CARRIER TAPE WIDTH | D    | C    | (B)   | (A)   | MATERIAL NO. | 種数<br>CKT. |

|  |                                       |             |                            |                   |   |                        |                           |
|--|---------------------------------------|-------------|----------------------------|-------------------|---|------------------------|---------------------------|
| REVISED<br>REV NO: J2006-0384<br>DRAWN: NAITA 2005/08/08<br>CHKD: KIKUYODA 2005/08/09<br>APPR: NUKITA 2005/08/12 | GENERAL TOLERANCES (UNLESS SPECIFIED) |             | DIMENSION STYLE<br>MM ONLY |                   | SCALE<br>---  | DESIGN UNITS<br>METRIC | THIRD ANGLE<br>PROJECTION |
|  | 10 UNDER                              | ±0.2        | DRAWN BY<br>T.UENO         | DATE<br>'03/12/12 | TITLE<br>1.0 FPC CONN SMT<br>ZIF EMBSTP PKG<br>-LEAD FREE-<br><b>molex</b> MOLEX INCORPORATED |                        |                           |
|  | 10 OVER 30 UNDER                      | ±0.25       | CHECKED BY<br>M.SASAO      | DATE<br>'03/12/12 |   |                        |                           |
|  | 30 OVER                               | ±0.3        | APPROVED BY<br>M.SASAO     | DATE<br>'03/12/12 |   |                        |                           |
|  | ANGULAR                               | ±3 °        | MATERIAL NO.               | DOCUMENT NO.      |   |                        |                           |
| DRAFT WHERE APPLICABLE<br>MUST REMAIN<br>WITHIN DIMENSIONS   |                                       | SIZE<br>A 3 | SEE CHART                  | SD-52610-038      |   |                        |                           |



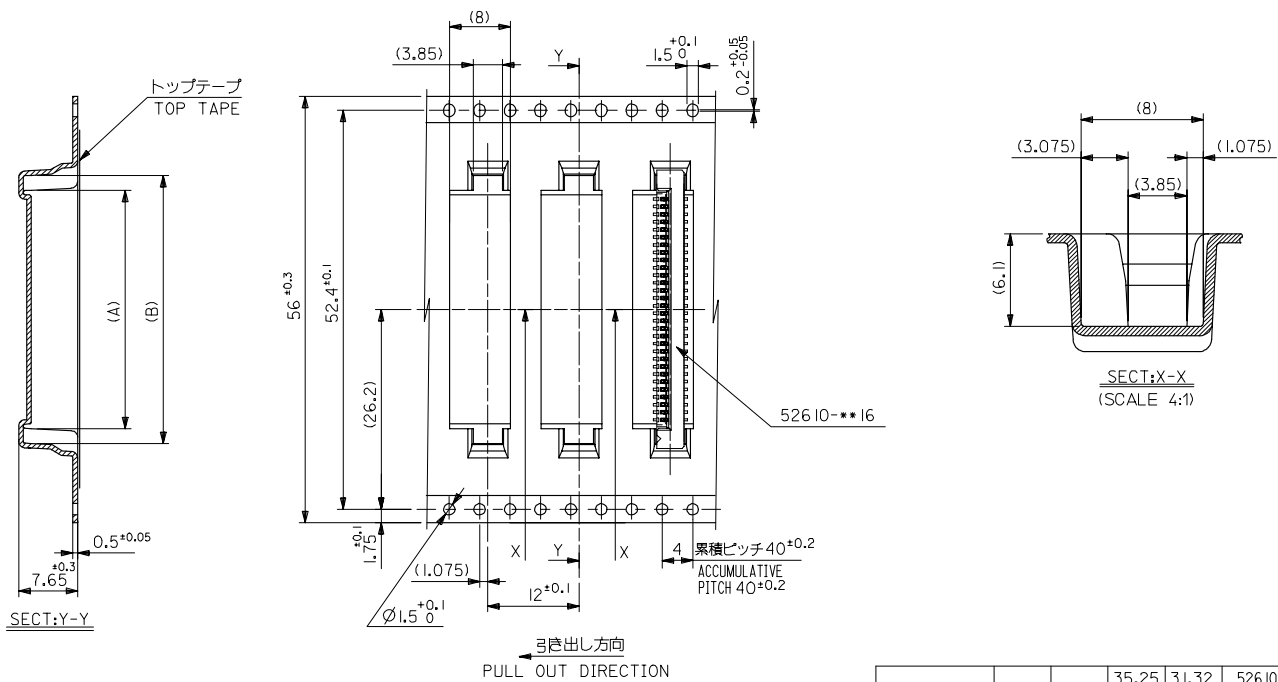
|                                |      |      |       |       |              |            |
|--------------------------------|------|------|-------|-------|--------------|------------|
| 32                             | 37.4 | 33.4 | 20.25 | 16.32 | 52610-1571   | 15         |
|                                |      |      | 19.25 | 15.32 | 52610-1471   | 14         |
|                                |      |      | 18.25 | 14.32 | 52610-1371   | 13         |
|                                |      |      | 17.25 | 13.32 | 52610-1271   | 12         |
|                                |      |      | 16.25 | 12.32 | 52610-1171   | 11         |
| キャリアテープ幅<br>CARRIER TAPE WIDTH | D    | C    | (B)   | (A)   | MATERIAL NO. | 極数<br>CKT. |

|   |                                       |               |  |                   |  |                              |                           |
|---|---------------------------------------|---------------|--|-------------------|--|------------------------------|---------------------------|
| REVISED<br>EC NO: J2006-0384<br>DRW:NAIDA 2005/08/08<br>CHK:KTYODA 2005/08/09<br>APPR:NIKIITA 2005/08/12                      | GENERAL TOLERANCES (UNLESS SPECIFIED) |               | DIMENSION STYLE<br>MM ONLY                                 |                   | SCALE<br>---   | DESIGN UNITS<br>METRIC       | THIRD ANGLE<br>PROJECTION |
|   | 10 UNDER                              | $\pm 0.2$     | DRAWN BY<br>T.UENO   | DATE<br>'03/12/12 | TITLE<br>1.0 FPC CONN SMT<br>ZIF EMBSTP PKG<br>-LEAD FREE-<br>MOLEX INCORPORATED |                              |                           |
|   | 10 OVER 30 UNDER                      | $\pm 0.25$    | CHECKED BY<br>M.SASAO                                      | DATE<br>'03/12/12 |  |                              |                           |
|   | 30 OVER                               | $\pm 0.3$     | APPROVED BY<br>M.SASAO                                     | DATE<br>'03/12/12 |  |                              |                           |
|   | ANGULAR                               | $\pm 3^\circ$ | DRAFT WHERE APPLICABLE<br>MUST REMAIN<br>WITHIN DIMENSIONS |                   | MATERIAL NO.<br>SEE CHART  | DOCUMENT NO.<br>SD-52610-038 | SHEET NO.<br>3 OF 5       |
| THIS DRAWING CONTAINS INFORMATION THAT IS PROPRIETARY TO MOLEX INCORPORATED AND SHOULD NOT BE USED WITHOUT WRITTEN PERMISSION |                                       |               |  |                   |  |                              |                           |



|                                |       |            |       |       |              |            |
|--------------------------------|-------|------------|-------|-------|--------------|------------|
| 44                             | 49.4  | 45.4       | 31.25 | 27.32 | 52610-2671   | 26         |
|                                |       |            | 30.25 | 26.32 | 52610-2571   | 25         |
|                                |       |            | 29.25 | 25.32 | 52610-2471   | 24         |
|                                |       |            | 28.25 | 24.32 | 52610-2371   | 23         |
|                                |       |            | 27.25 | 23.32 | 52610-2271   | 22         |
|                                |       |            | 26.25 | 22.32 | 52610-2171   | 21         |
|                                |       |            | 25.25 | 21.32 | 52610-2071   | 20         |
|                                |       |            | 24.25 | 20.32 | 52610-1971   | 19         |
|                                |       |            | 23.25 | 19.32 | 52610-1871   | 18         |
|                                |       |            | 22.25 | 18.32 | 52610-1771   | 17         |
| 21.25                          | 17.32 | 52610-1671 | 16    |       |              |            |
| キャリアテープ幅<br>CARRIER TAPE WIDTH | D     | C          | (B)   | (A)   | MATERIAL NO. | 種数<br>CKT. |

|   |                                       |  |                            |                   |  |                        |                           |
|---|---------------------------------------|--|----------------------------|-------------------|--|------------------------|---------------------------|
| REVISED<br>EC NO: J2006-0384<br>DRW:NAIDA 2005/08/08<br>CHK:KTYODA 2005/08/09<br>APPR:NIKIITA 2005/08/12<br>REV DESCRIPTION | GENERAL TOLERANCES (UNLESS SPECIFIED) |  | DIMENSION STYLE<br>MM ONLY |                   | SCALE<br>---   | DESIGN UNITS<br>METRIC | THIRD ANGLE<br>PROJECTION |
|   | 10 UNDER                              | ±0.2   | DRAWN BY<br>T.UENO         | DATE<br>'03/12/12 | TITLE<br>1.0 FPC CONN SMT<br>ZIF EMBSTP PKG<br>-LEAD FREE- |                        |                           |
|   | 10 OVER 30 UNDER                      | ±0.25  | CHECKED BY<br>M.SASAO      | DATE<br>'03/12/12 | MOLEX INCORPORATED   |                        |                           |
|   | 30 OVER                               | ±0.3   | APPROVED BY<br>M.SASAO     | DATE<br>'03/12/12 | DOCUMENT NO.<br>SD-52610-038                               |                        |                           |
|   | ANGULAR                               | ±3 °   | MATERIAL NO.<br>SEE CHART  |                   | SHEET NO.<br>4 OF 5  |                        |                           |
| DRAFT WHERE APPLICABLE<br>MUST REMAIN<br>WITHIN DIMENSIONS  |                                       | THIS DRAWING CONTAINS INFORMATION THAT IS PROPRIETARY TO MOLEX<br>INCORPORATED AND SHOULD NOT BE USED WITHOUT WRITTEN PERMISSION |                            |                   |  |                        |                           |



|                                |      |      |       |       |              |            |
|--------------------------------|------|------|-------|-------|--------------|------------|
| 56                             | 61.4 | 57.4 | 35.25 | 31.32 | 52610-3071   | 30         |
| キャリアテープ幅<br>CARRIER TAPE WIDTH | D    | C    | (B)   | (A)   | MATERIAL NO. | 種数<br>CKT. |

|  |                                       |  |                            |                           |  |                        |                           |
|--|---------------------------------------|--|----------------------------|---------------------------|--|------------------------|---------------------------|
| REVISED<br>EC NO. J2006-0384<br>DRW:NAIDA 2005/08/08<br>CHK:KTYODA 2005/08/09<br>APPR:NIKIITA 2005/08/12 | GENERAL TOLERANCES (UNLESS SPECIFIED) |  | DIMENSION STYLE<br>MM ONLY |                           | SCALE<br>---   | DESIGN UNITS<br>METRIC | THIRD ANGLE<br>PROJECTION |
|  | 10 UNDER                              | ±0.2   | DRAWN BY<br>T.UENO         | DATE<br>'03/12/12         | TITLE<br>1.0 FPC CONN SMT<br>ZIF EMBSTP PKG<br>-LEAD FREE-<br>MOLEX INCORPORATED |                        |                           |
|  | 10 OVER 30 UNDER                      | ±0.25  | CHECKED BY<br>M.SASAO      | DATE<br>'03/12/12         |  |                        |                           |
|  | 30 OVER                               | ±0.3   | APPROVED BY<br>M.SASAO     | DATE<br>'03/12/12         |  |                        |                           |
| ANGULAR  | ±3 °                                  | DRAFT WHERE APPLICABLE<br>MUST REMAIN<br>WITHIN DIMENSIONS |                            | MATERIAL NO.<br>SEE CHART | DOCUMENT NO.<br>SD-52610-038   | SHEET NO.<br>5 OF 5    |                           |