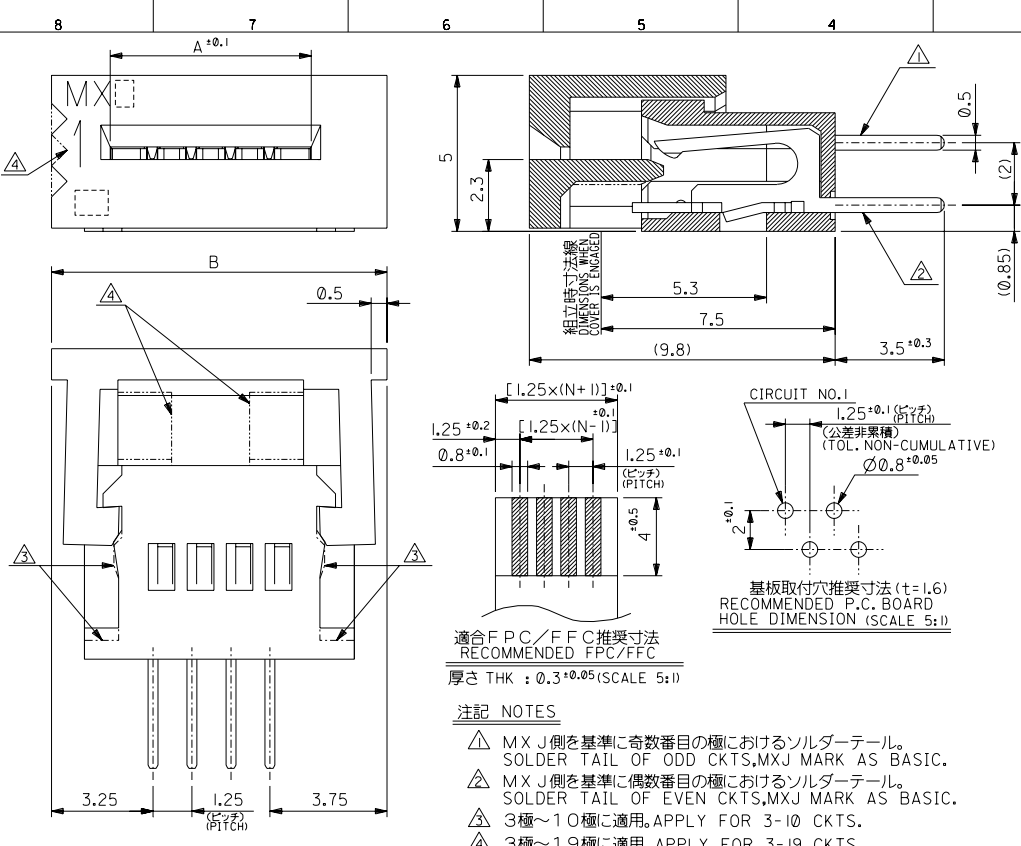


DWG. NO. SD-5597-005

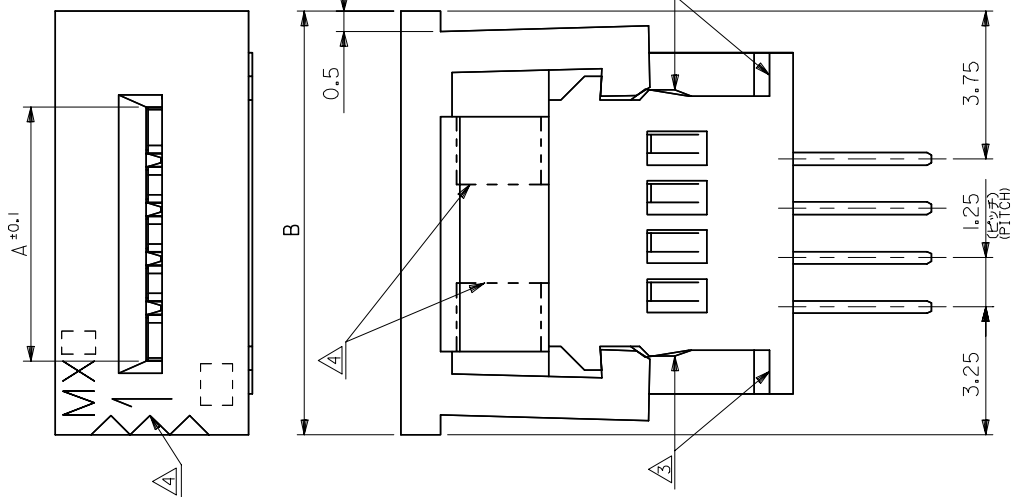
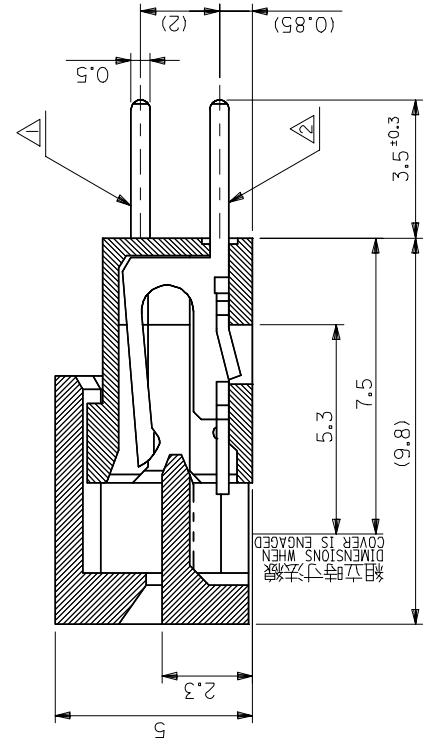


6. ソルダータールは、先端が取付推奨穴にガイドされること。ガイドされること。
SOLDER TAILS MAY BE CHECKED BY INSERTION FOR RECOMMENDED PCB BOARD HOLES.

48.25	43.95	39-51-3344	5597-34CPB	34
47	42.7	-3334	-33CPB	33
45.75	41.45	-3324	-32CPB	32
44.5	40.2	-3314	-31CPB	31
43.25	38.95	-3304	-30CPB	30
42	37.7	-3294	-29CPB	29
40.75	36.45	-3284	-28CPB	28
39.5	35.2	-3274	-27CPB	27
38.25	33.95	-3264	-26CPB	26
37	32.7	-3254	-25CPB	25
35.75	31.45	-3244	-24CPB	24
34.5	30.2	-3234	-23CPB	23
33.25	28.95	-3224	-22CPB	22
32	27.7	-3214	-21CPB	21
30.75	26.45	-3204	-20CPB	20
29.5	25.2	-3194	-19CPB	19
28.25	23.95	-3184	-18CPB	18
27	22.7	-3174	-17CPB	17
25.75	21.45	-3164	-16CPB	16
24.5	20.2	-3154	-15CPB	15
23.25	18.95	-3144	-14CPB	14
22	17.7	-3134	-13CPB	13
20.75	16.45	-3124	-12CPB	12
19.5	15.2	-3114	-11CPB	11
18.25	13.95	-3104	-10CPB	10
17	12.7	-3094	-09CPB	9
15.75	11.45	-3084	-08CPB	8
14.5	10.2	-3074	-07CPB	7
13.25	8.95	-3064	-06CPB	6
12	7.7	-3054	-05CPB	5
10.75	6.45	-3044	-04CPB	4
9.5	5.2	39-51-3034	5597-03CPB	3
B	A	ENG. NO.	ENG. NO.	極数

DO NOT SCALE DRAWING

E84 NO. DRWN: CHK: APPR:	E83 NO. DRWN: CHK: APPR:	E82 NO. DRWN: CHK: APPR:	E81 NO. DRWN: CHK: APPR:	再作図及び変更 REDRAWN & REVISED E80 NO. J2003-2624 DRWN: K. TOJO '03/04/17 CHK: H. Sano '03/04/17 APPR: H. Sano '03/04/17	MATERIAL HOUSING, ACTUATOR : PBTP, UL94V-0 TERMINAL : PHOSPHOR-BRONZE THK : 0.3t	GENERAL TOLERANCES: (UNLESS SPECIFIED) 10 UNDER 未満 10 OVER 以上 30 UNDER 未満 30 OVER 以上	SCALE DESIGN UNITS mm INCH	DRAWN BY & DATE K. TOJO '03/04/15 CHECKED BY & DATE H. Sano '03/04/17 APPROVED BY & DATE H. Sano '03/04/17	DIMENSIONS: mm ONLY	SHT REV
8	7	6	5	4	3	2	1	EN-02J(097) MXJ-54		



49.5	45.2	39-53-2355	5597-35CPB7F	35
48.25	43.95	↑ -2345	↑ -34CPB7F	34
47	42.7	-2335	-33CPB7F	33
45.75	41.45	-2325	-32CPB7F	32
44.5	40.2	-2315	-31CPB7F	31
43.25	38.95	-2305	-30CPB7F	30
42	37.7	-2295	-29CPB7F	29
40.75	36.45	-2285	-28CPB7F	28
39.5	35.2	-2275	-27CPB7F	27
38.25	33.95	-2265	-26CPB7F	26
37	32.7	-2255	-25CPB7F	25
35.75	31.45	-2245	-24CPB7F	24
34.5	30.2	-2235	-23CPB7F	23
33.25	28.95	-2225	-22CPB7F	22
32	27.7	-2215	-21CPB7F	21
30.75	26.45	-2205	-20CPB7F	20
29.5	25.2	-2195	-19CPB7F	19
28.25	23.95	-2185	-18CPB7F	18
27	22.7	-2175	-17CPB7F	17
25.75	21.45	-2165	-16CPB7F	16
24.5	20.2	-2155	-15CPB7F	15
23.25	18.95	-2145	-14CPB7F	14
22	17.7	-2135	-13CPB7F	13
20.75	16.45	-2125	-12CPB7F	12
19.5	15.2	-2115	-11CPB7F	11
18.25	13.95	-2105	-10CPB7F	10
17	12.7	-2095	-09CPB7F	9
15.75	11.45	-2085	-08CPB7F	8
14.5	10.2	-2075	-07CPB7F	7
13.25	8.95	-2065	-06CPB7F	6
12	7.7	-2055	-05CPB7F	5
10.75	6.45	↑ -2045	↑ -04CPB7F	4
9.5	5.2	39-53-2035	5597-03CPB7F	3

MODEL NO.	5597-NCPB7F	SCALE	---	DESIGN UNITS	METRIC	THIRD ANGLE PROJECTION	
GENERAL TOLERANCES (UNLESS SPECIFIED)	10 UNDER ±0.2	DRAWN BY	YWADA	DATE	04/02/19	TITLE	1.25 FPC CONN ASSY ZIF
	10 OVER 30 UNDER ±0.25	CHECKED BY	MSASAO	DATE	04/02/19		
	30 OVER ±0.3	APPROVED BY	MSASAO	DATE	04/02/19		
ANGULAR ±3°		MATERIAL NO.					
DRAFT WHERE APPLICABLE MUST REMAIN WITHIN DIMENSIONS		SEE CHART					
		SIZE	A3	THIS DRAWING CONTAINS INFORMATION THAT IS PROPRIETARY TO MOLEX INCORPORATED AND SHOULD NOT BE USED WITHOUT WRITTEN PERMISSION			

REVISION	DESCRIPTION	DATE	BY
A	REVISED	2004/12/14	DRW:ESUZUKI
		2004/12/14	CHKD:TOJO
		2004/12/14	APP:NUKITA

MODEL NO.	5597-NCPB7F	SCALE	---	DESIGN UNITS	METRIC	THIRD ANGLE PROJECTION	
GENERAL TOLERANCES (UNLESS SPECIFIED)	10 UNDER ±0.2	DRAWN BY	YWADA	DATE	04/02/19	TITLE	1.25 FPC CONN ASSY ZIF
	10 OVER 30 UNDER ±0.25	CHECKED BY	MSASAO	DATE	04/02/19		
	30 OVER ±0.3	APPROVED BY	MSASAO	DATE	04/02/19		
ANGULAR ±3°		MATERIAL NO.					
DRAFT WHERE APPLICABLE MUST REMAIN WITHIN DIMENSIONS		SEE CHART					
		SIZE	A3	THIS DRAWING CONTAINS INFORMATION THAT IS PROPRIETARY TO MOLEX INCORPORATED AND SHOULD NOT BE USED WITHOUT WRITTEN PERMISSION			

F

F

E

E

D

D

C

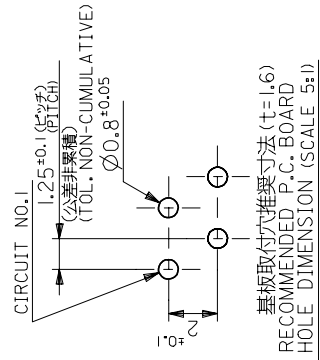
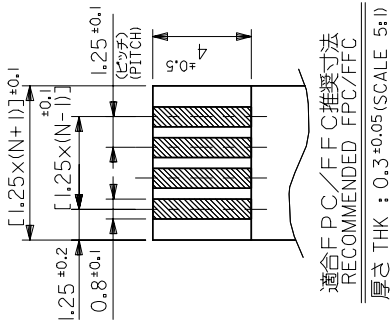
C

B

B

A

A



FPCについて：
 打抜き方向は導体側から補強板側を推奨いたします。
 補強フィルム材質はポリミドを推奨致します。
 接着剤は熱硬化接着剤を推奨致します。

ABOUT FPC:
 RECOMMENDED PUNCHER DIRECTION :
 FROM CONDUCTOR SIDE TO STIFFENER BOARD SIDE.
 RECOMMENDED MATERIAL:
 STIFFENER FILM : POLYIMIDE
 BONDING AGENT : THERMOSETTING BONDING AGENT

適合FPC/FCC推奨寸法
 厚さ THK : 0.3 ±0.05 (SCALE 5:1)

注記 NOTES

- △ MX J側を基準に奇数番目の極におけるソルダーテール。
 SOLDER TAIL OF ODD CKTS, MXJ MARK AS BASIC.
- △ MX J側を基準に偶数番目の極におけるソルダーテール。
 SOLDER TAIL OF EVEN CKTS, MXJ MARK AS BASIC.
- △ 3極~10極に適用。APPLY FOR 3-10 CKTS.
- △ 3極~19極に適用。APPLY FOR 3-19 CKTS.
- 5. () 内寸法は、参考値。
 () DIMENSION IS FOR REFERENCE.
- 6. ソルダーテールは、先端が取付推奨穴にガイドされること。
 SOLDER TAILS MAY BE CHECKED BY INSERTION FOR RECOMMENDED PCB BOARD HOLES.

- 7. 使用材料
 MATERIAL
 ハウジング、アクチュエーター：PBTP, UL94V-0
 HOUSING, ACTUATOR: PBTP, UL94V-0
 ターミナル：リン青銅 (t=0.3)
 PHOSPHOR BRONZE (t=0.3)
 銅ヒスススミック 1.0µm MIN.
 TIN-BISMUTH 1.0 MICROMETER MIN.
 ニッケル下地 1.0µm MIN.
 NICKEL 1.0 MICROMETER MIN.
- 8. 本製品は597-NCPBの鉛フリー品である。
 THIS PRODUCT IS LEAD FREE OF 597-NCPB.

GENERAL TOLERANCES (UNLESS SPECIFIED)		DIMENSION STYLE MM ONLY		SCALE ---	DESIGN UNITS METRIC	THIRD ANGLE PROJECTION
10 UNDER	±0.2	DRAWN BY YWADA	DATE 04/02/19	TITLE 1.25 FPC CONN ASSY ZIF		
10 OVER	30 UNDER	CHECKED BY MSASAO	DATE 04/02/19	-LEAD FREE-		
30 OVER	±0.3	APPROVED BY MSASAO	DATE 04/02/19	MOLEX INCORPORATED		
ANGULAR	±3°	MATERIAL NO.	DOCUMENT NO.	SD-5597-007		
DRAFT WHERE APPLICABLE MUST REMAIN WITHIN DIMENSIONS		SEE CHART		SHEET NO. 2 OF 2		
A3		THIS DRAWING CONTAINS INFORMATION THAT IS PROPRIETARY TO MOLEX INCORPORATED AND SHOULD NOT BE USED WITHOUT WRITTEN PERMISSION				