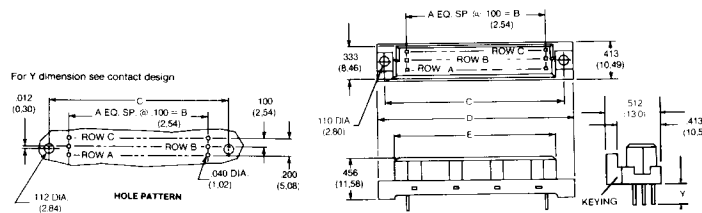


DIN 41612 Connectors



Series 8457 – Female Style C - 3 Rows (3 x 32) - .100 Pitch

Dimensions



Inches (mm)

No. Contact Positions	Contact Rows	A	B	C	D	E
096	3 (3 x 32)	31	3.100 (78.74)	3.543 (89.99)	3.736 (94.89)	3.343 (84.91)

Contact Design and Termination Length	Number of Positions	Loading Description	Part Number Performance classes according to DIN 41612		
			III	II	I
0.6 x 0.6 mm Post Profile 4.5 mm (Y) Straight	96	a + b + c fully loaded	20 8457 096 001 001	20 8457 096 001 025	20 8457 096 001 049
	64	a + c fully loaded	20 8457 096 001 002	20 8457 096 001 026	20 8457 096 001 050
	32	a + c even loading	20 8457 096 001 009	20 8457 096 001 033	20 8457 096 001 057
	32	a loading only	20 8457 096 001 003	20 8457 096 001 027	20 8457 096 001 051
0.6 x 0.6 mm Post Profile 2.9 mm (Y) Straight	96	a + b + c fully loaded	20 8457 096 002 001	20 8457 096 002 025	20 8457 096 002 049
	64	a + c fully loaded	20 8457 096 002 002	20 8457 096 002 026	20 8457 096 002 050
	32	a + c even loading	20 8457 096 002 009	20 8457 096 002 033	20 8457 096 002 057
	32	a loading only	20 8457 096 002 003	20 8457 096 002 027	20 8457 096 002 051
0.3 x 0.79 mm Post Profile 4.5 mm (Y) Straight	96	a + b + c fully loaded	20 8457 096 003 001	20 8457 096 003 025	20 8457 096 003 049
	64	a + c fully loaded	20 8457 096 003 002	20 8457 096 003 026	20 8457 096 003 050
	32	a + c even loading	20 8457 096 003 009	20 8457 096 003 033	20 8457 096 003 057
	32	a loading only	20 8457 096 003 003	20 8457 096 003 027	20 8457 096 003 051
0.3 x 0.79 mm Post Profile 2.9 mm (Y) Straight	96	a + b + c fully loaded	20 8457 096 004 001	20 8457 096 004 025	20 8457 096 004 049
	64	a + c fully loaded	20 8457 096 004 002	20 8457 096 004 026	20 8457 096 004 050
	32	a + c even loading	20 8457 096 004 009	20 8457 096 004 033	20 8457 096 004 057
	32	a loading only	20 8457 096 004 003	20 8457 096 004 027	20 8457 096 004 051
0.6 x 0.6 mm Post Profile 13.0 mm (Y) Straight	96	a + b + c fully loaded	20 8457 096 005 001	20 8457 096 005 025	20 8457 096 005 049
	64	a + c fully loaded	20 8457 096 005 002	20 8457 096 005 026	20 8457 096 005 050
	32	a + c even loading	20 8457 096 005 009	20 8457 096 005 033	20 8457 096 005 057
	32	a loading only	20 8457 096 005 003	20 8457 096 005 027	20 8457 096 005 051
0.6 x 0.6 mm Post Profile 7.0 mm (Y) Straight	96	a + b + c fully loaded	20 8457 096 010 001	20 8457 096 010 025	20 8457 096 010 049
	64	a + c fully loaded	20 8457 096 010 002	20 8457 096 010 026	20 8457 096 010 050
	32	a + c even loading	20 8457 096 010 009	20 8457 096 010 033	20 8457 096 010 057
	32	a loading only	20 8457 096 010 003	20 8457 096 010 027	20 8457 096 010 051
0.6 x 0.6 mm Post Profile 3.5 mm (Y) Straight	96	a + b + c fully loaded	20 8457 096 011 001	20 8457 096 011 025	20 8457 096 011 049
	64	a + c fully loaded	20 8457 096 011 002	20 8457 096 011 026	20 8457 096 011 050
	32	a + c all even loading	20 8457 096 011 009	20 8457 096 011 033	20 8457 096 011 057
	32	a loading only	20 8457 096 011 003	20 8457 096 011 027	20 8457 096 011 051
0.6 x 0.6 mm Post Profile 19.4 mm (Y) Straight	96	a + b + c fully loaded	20 8457 096 012 001	20 8457 096 012 025	20 8457 096 012 049
	64	a + c fully loaded	20 8457 096 012 002	20 8457 096 012 026	20 8457 096 012 050
	32	a + c even loading	20 8457 096 012 009	20 8457 096 012 033	20 8457 096 012 057
	32	a loading only	20 8457 096 012 003	20 8457 096 012 027	20 8457 096 012 051
0.6 x 0.6 mm Post Profile 4.5 mm (Y) Right Angled	96	a + b + c fully loaded	20 8457 096 013 001	20 8457 096 013 025	20 8457 096 013 049
	64	a + c fully loaded	20 8457 096 013 002	20 8457 096 013 026	20 8457 096 013 050
	32	a + c even loading	20 8457 096 013 009	20 8457 096 013 033	20 8457 096 013 057
	32	a loading only	20 8457 096 013 003	20 8457 096 013 027	20 8457 096 013 051

Additional information on this product is available from AVX's catalog or AVX's FAX Service. Call 1-800-879-1613 and request document #192. Visit our website <http://www.avxcorp.com>

ELCO