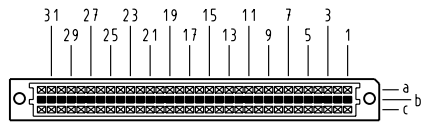


Alle Rechte vorbehalten. All rights reserved.

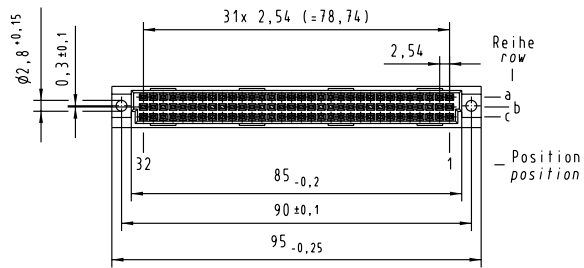
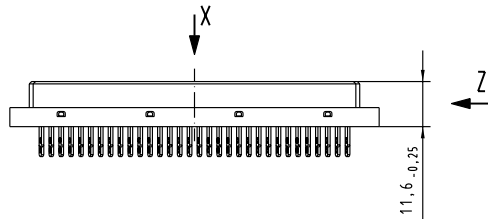
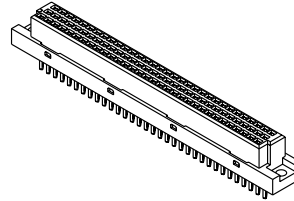
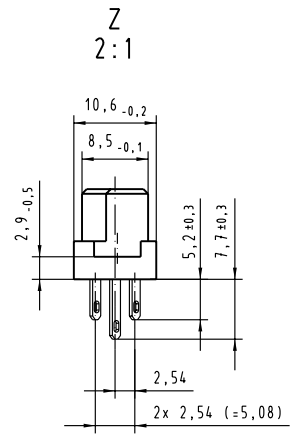
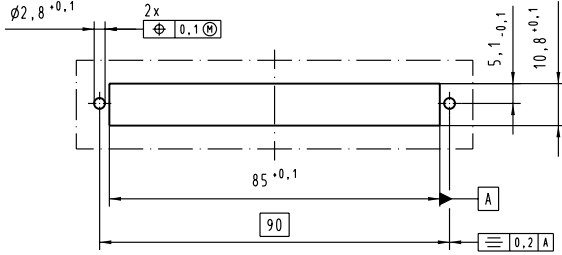
X
Kontaktanordnung
Contact arrangement



96 Signal Kontakte
96 signal contacts

- ⊗ = Position belegt mit Lötöse 5,2 mm
= position with soldering-eye 5,2 mm
- = Position belegt mit Lötöse 7,7 mm
= position with soldering-eye 7,7 mm
- = Kontaktposition nicht belegt
= position without contact

X
(Montageausschnitt)
(mounting cutout)



09 03 296 6823	2	Au über/over PdNi
Bestell-Nr. Part-No.	Anforderungsstufe nach IEC performance level per IEC	Kontaktoberfläche Contact Plating

All Dimensions in mm Original Size DIN A 3	Techn. Character.			Nicht tolerierte Maß/Free size tolerances siehe / see IEC 60603-2	
	Detail. Insp. Stand.	Dat. 15.05.03 15.05.03	Name Häge. Sch.	Maßstab/Scale 1:1 (2:1)	Bauform C Federleiste, Lötöse 5,2/7,7, 96 pol. type C female connector, soldering-eye 5,2/7,7, 96 pol.
31433	HARTING Electronics GmbH & Co. KG D-32339 ESPELKAMP			TB 09 03 296 x823	
Mod.	Dat.	Name	Sub.		Blatt/ page