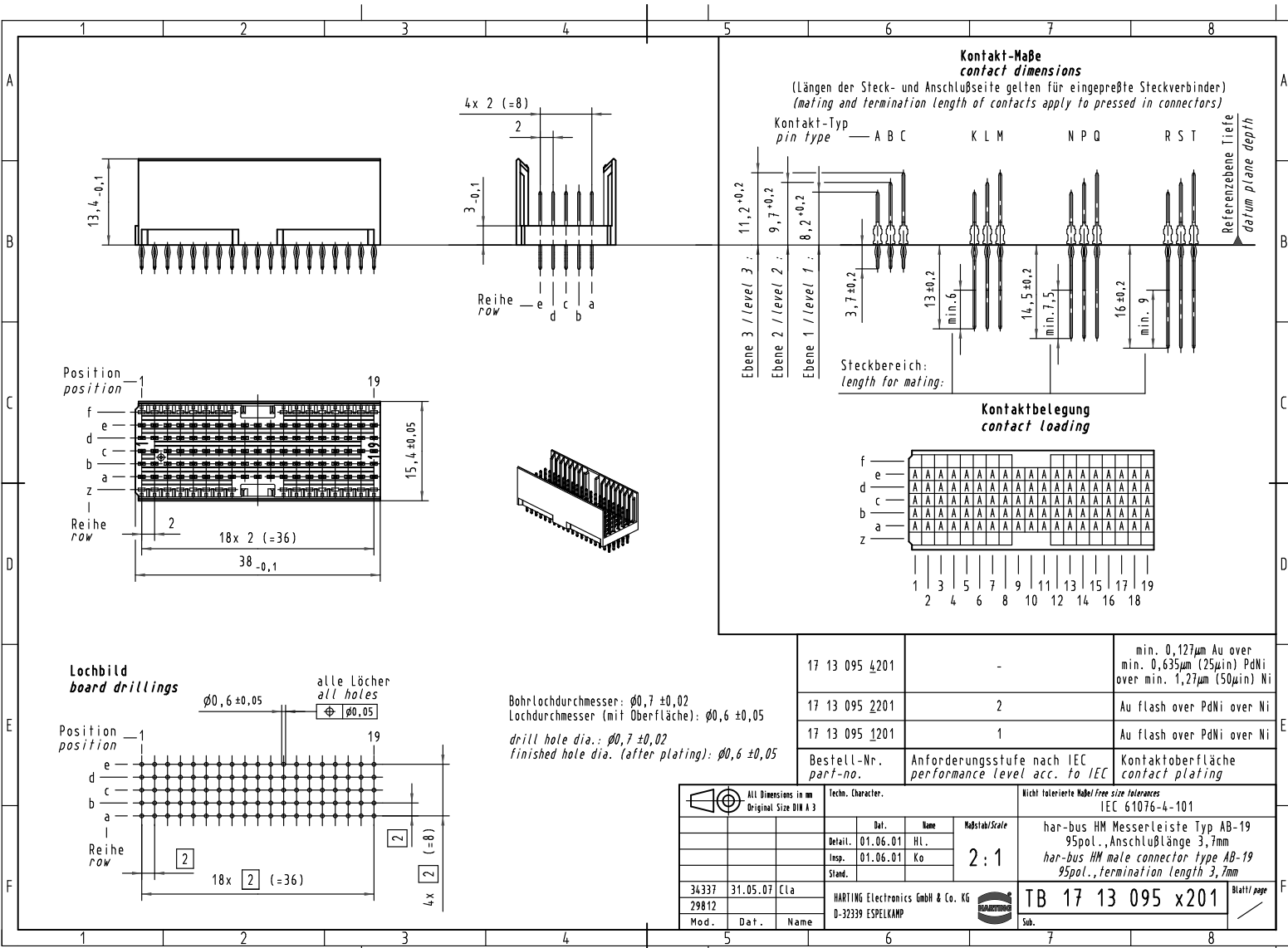
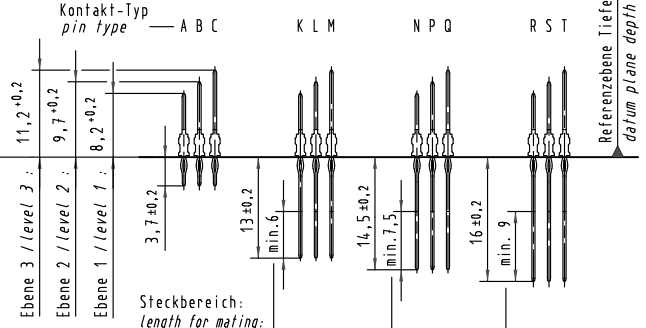


Alle Rechte vorbehalten. All rights reserved.



Kontakt-Maße
contact dimensions

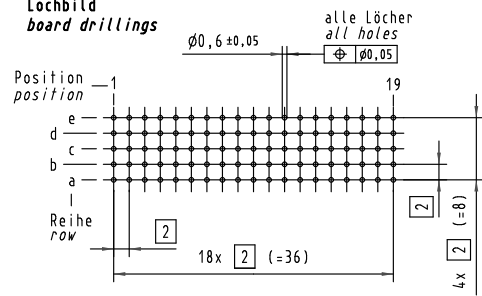
(Längen der Steck- und Anschlußseite gelten für eingepreßte Steckverbinder)
(mating and termination length of contacts apply to pressed in connectors)



Kontaktbelegung
contact loading

f	A	A	A	A	A	A	A	A	A	A	A	A	A	A	A	A	A	A	
e	A	A	A	A	A	A	A	A	A	A	A	A	A	A	A	A	A	A	
d	A	A	A	A	A	A	A	A	A	A	A	A	A	A	A	A	A	A	
c	A	A	A	A	A	A	A	A	A	A	A	A	A	A	A	A	A	A	
b	A	A	A	A	A	A	A	A	A	A	A	A	A	A	A	A	A	A	
a	A	A	A	A	A	A	A	A	A	A	A	A	A	A	A	A	A	A	
z	A	A	A	A	A	A	A	A	A	A	A	A	A	A	A	A	A	A	
	1	3	5	7	9	11	13	15	17	19	2	4	6	8	10	12	14	16	18

Lochbild
board drillings



All Dimensions in mm Original Size DIN A 3		Techn. Character.		Nicht tolerierte Maß/Free size tolerances IEC 61076-4-101	
17 13 095 4201	-			min. 0,127µm Au over min. 0,635µm (25µin) PdNi over min. 1,27µm (50µin) Ni	
17 13 095 2201	2			Au flash over PdNi over Ni	
17 13 095 1201	1			Au flash over PdNi over Ni	
Bestell-Nr. <i>part-no.</i>	Anforderungsstufe nach IEC <i>performance level acc. to IEC</i>	Kontaktoberfläche <i>contact plating</i>			
2:1		har-bus HM Messerleiste Typ AB-19 95pol., Anschlußlänge 3,7mm har-bus HM male connector type AB-19 95pol., termination length 3,7mm		TB 17 13 095 x201	
34337	31.05.07	Cla		Blatt/ page	
29812					
Mod.	Dat.	Name		Sub.	
		HARTING Electronics GmbH & Co. KG D-32339 ESPELKAMP			