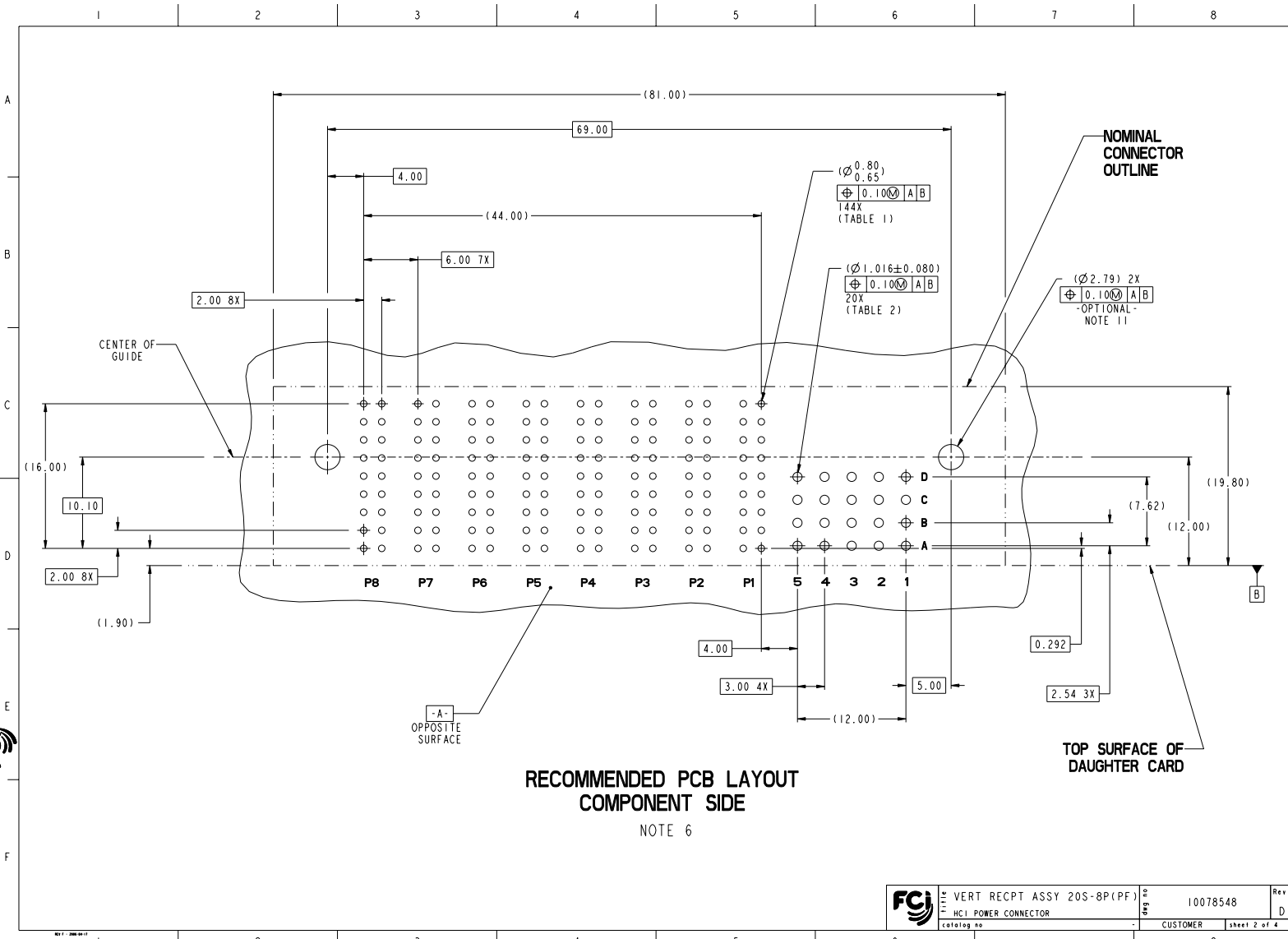


Copyright FCJ

www.fciconnect.com				surface	tolerance std	projection	MM
				ASME Y14.5	ASME Y14.5	ASME Y14.5	
TOLERANCES UNLESS OTHERWISE SPECIFIED							
Dr	T. HOUTZ	2007-04-07		ANGULAR	0.X	±.3	Scale
Eng	H. NGO	2007-04-07		LINEAR	0.XX	±.10	A2
					0.XXX	±.050	ECN
Appr	H. NGO	2007-04-07		Product family		HCI	Spec ref
Rev.				VERT RECP ASSY 20S-8P(PF)		10078548	Rev.
				HCI POWER CONNECTOR			D
				catalog no		CUSTOMER	sheet 1 of 4

PDM: Rev:D STATUS: Released 8 Printed: Dec 18, 2010



**RECOMMENDED PCB LAYOUT  
COMPONENT SIDE**

NOTE 6

	VERT RECPT ASSY 20S-8P(PF)	10078548	Rev. D
	HCl POWER CONNECTOR	CUSTOMER	sheet 2 of 4

1 2 3 4 5 6 7 8

A

B

C


D

E

F

TOP LAYER DESCRIPTION	TABLE 1 (HCl POWER) PLATED THROUGH-HOLE REQUIREMENTS							
	DRILLED HOLE DIAMETER	COPPER THICKNESS	TIN-LEAD THICKNESS	NICKEL THICKNESS	GOLD THICKNESS	TIN THICKNESS	SILVER THICKNESS	FINISHED HOLE DIAMETER
TIN-LEAD	0.81-0.86 (0.85 DRILL)	0.025 - 0.050	0.005 - 0.015	--	--	--	--	0.65 - 0.80
IMMERSON TIN	0.81-0.86 (0.85 DRILL)	0.025 - 0.050	--	--	--	0.9 - 1.5um	--	0.70 - 0.80
IMMERSON SILVER	0.81-0.86 (0.85 DRILL)	0.025 - 0.050	--	--	--	--	0.15 - 0.65um	0.70 - 0.80
COPPER (SEE NOTE 9)	0.81-0.86 (0.85 DRILL)	0.025 - 0.050	--	--	--	--	--	0.70 - 0.80
GOLD	0.81-0.86 (0.85 DRILL)	0.025 - 0.050	--	0.003 - 0.007	FLASH UP TO 0.0002	--	--	0.69 - 0.80

TOP LAYER DESCRIPTION	TABLE 2 (HPC SIGNALS) PLATED THROUGH-HOLE REQUIREMENTS							
	DRILLED HOLE DIAMETER	COPPER THICKNESS	TIN-LEAD THICKNESS	NICKEL THICKNESS	GOLD THICKNESS	TIN THICKNESS	SILVER THICKNESS	FINISHED HOLE DIAMETER
TIN-LEAD	1.125-1.175 ( $\varnothing$ .0453 $\pm$ .0010)	0.025-0.050	0.005-0.015	--	--	--	--	0.94 - 1.10 ( $\varnothing$ .040 $\pm$ .003)
IMMERSON TIN			--	--	--	--	--	
IMMERSON SILVER			--	--	--	--	--	
COPPER (SEE NOTE 9)			--	--	--	--	--	
GOLD			--	--	--	--	--	

	VERT RECPT ASSY 20S-8P(PF)	10078548	Rev. D
	HCl POWER CONNECTOR		

PDM: Rev:D STATUS:Released 8 Printed: Dec 18, 2010

1 2 3 4 5 6 7 8

A

B

C

D

E

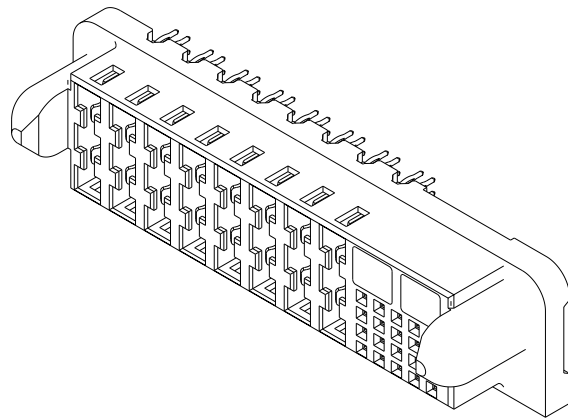
F

Copyright FCJ

PART NUMBER	M2.5 SCREW NOTE 11	TAIL PLATING	TAIL TYPE
10078548-001	OPTIONAL	SnPb	PRESS-FIT
10078548-001LF	OPTIONAL	Sn	PRESS-FIT

NOTES:

1. CONNECTOR MATERIALS:  
HOUSING: HIGH TEMPERATURE THERMOPLASTIC, BLACK  
UL 94V-0 COMPLIANT  
CONTACTS: HIGH PERFORMANCE COPPER ALLOY
2. CONTACT FINISH (ref GS-12-380 SECTION 5.2)
3. PRODUCT SPECIFICATION: GS-12-380.
4. APPLICATION SPECIFICATION: GS-20-070.
5. PRODUCT MARKING (PRODUCT NUMBER & DATE CODE) ON HOUSING IN AREA SHOWN.
6. MINIMUM NOMINAL PCB THICKNESS: 1.6mm
7. PACKAGING MEETS FC1 SPECIFICATION GS-14-1073.
8. HOUSING COMPONENT WILL WITHSTAND EXPOSURE TO 260°C PEAK TEMPERATURE FOR 60 SECONDS IN A CONVECTION, INFRA-RED, OR VAPOR PHASE REFLOW OVEN.
9. COPPER PLATING THICKNESS IN CENTER OF VIA-HOLE CAN BE NO MORE THAN 0.003 LESS THAN OTHER AREAS.
10. ALL HOLE SIZES ARE FINISHED HOLE SIZES.
11. RECOMMENDED RETENTION TO PCB:  
Ø 0.110 [2.79] THRU HOLE (UNPLATED) FOR M2.5 SELF THREADING SCREW, MAX HEAD Ø 0.171 [4.50].  
RECOMMENDED SCREW LENGTH 0.276 [7.00] + PCB THICKNESS.  
RECOMMENDED SCREW SEATING TO PCB TORQUE: 2-5 lbf-in (2300-5760 gf-cm).



	VERT RECPT ASSY 20S-8P(PF)	10078548	Rev. D
	HCl POWER CONNECTOR	CUSTOMER	sheet 4 of 4

PDM: Rev:D STATUS: Released 8 Printed: Dec 18, 2010

Copyright FCJ