

### Specifications

Insulation Resistance:	1,000MΩ min. at 500V DC
Withstanding Voltage:	500V ACrms for 1 minute
Contact Resistance:	100mΩ at 1mA / 20mV max.
Voltage Rating:	250Vrms AC
Current Rating:	0.5A
Operating Temp. Range:	-25°C to +85°C
Coplanarity:	≤ 0.1mm
Mating Cycles:	10,000 (office environment)

### Materials and Finish

Insulator:	LCP glass filled
Contacts:	PB, t = 0.23
	Contact area = Ni-Au
	Solder Tails = Ni-SnCu
Write Protection:	PB, t = 0.18 Ni-Au
Card Detector:	PB, t = 0.15, Ni-Au
Ejector:	LCP glass filled

### Features

- Easy operation by manual insertion / extraction
- 3 step sequential contacting design
- Card detector and write protection (optional)
- Tape and Reel packaging (500 pcs / reel)

### Part Number (Details)

FPS      009 - 300      \* - BL

Series No.

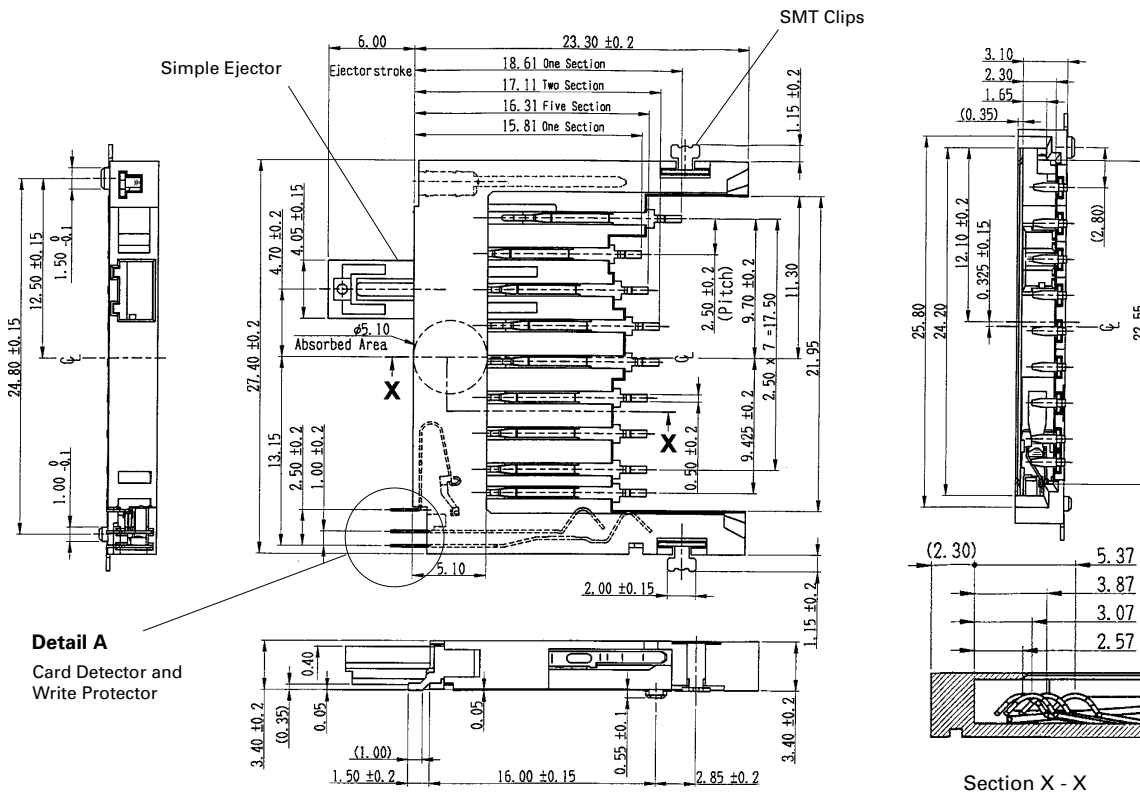
Number of Contacts

Design No.

- 1 = with Simple Ejector
- 2 = without Simple Ejector
- 3 = without Simple Ejector and Switches



### Outline Dimensions

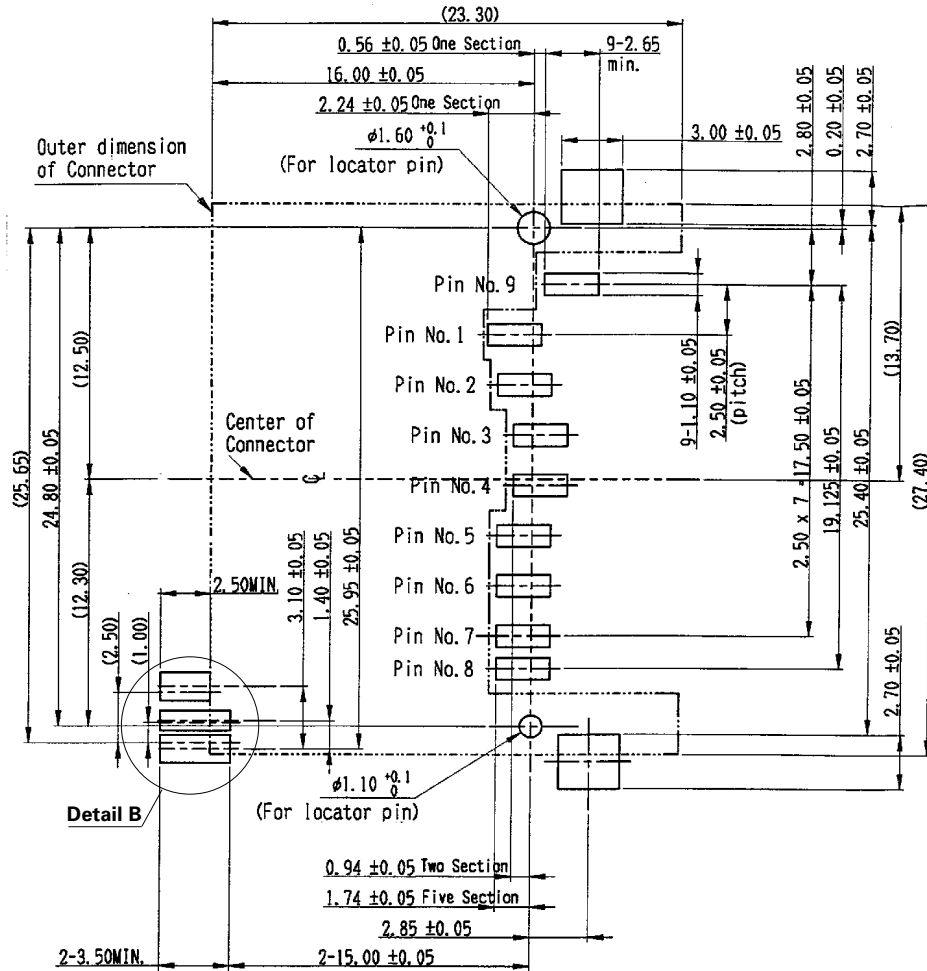


### Function Table

Part Number	Simple Ejector	Card Detector	SMT Clips	Write Protection Switch
FPS009-3001-BL	Yes	Yes	Yes	Yes
FPS009-3002-BL	-	Yes	Yes	Yes
FPS009-3003-BL	-	-	Yes	-

Recommended PCB Layouts FPS009-3001-BL and FPS009-3002-BL

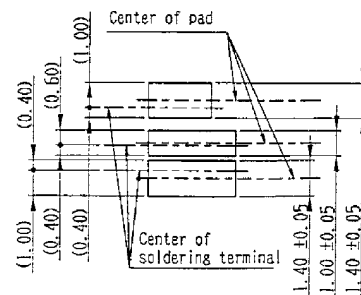
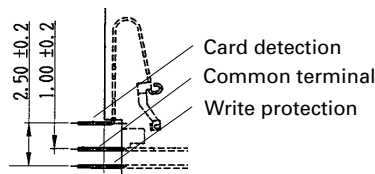
Top View



SD and MMC

Detail A (Card Detector / Write Protector)  
FPS009-3001-BL and FPS009-3002-BL

Detail B (PCB Layouts)  
FPS009-3001-BL and FPS009-3002-BL



Circuit Diagram for Switch

