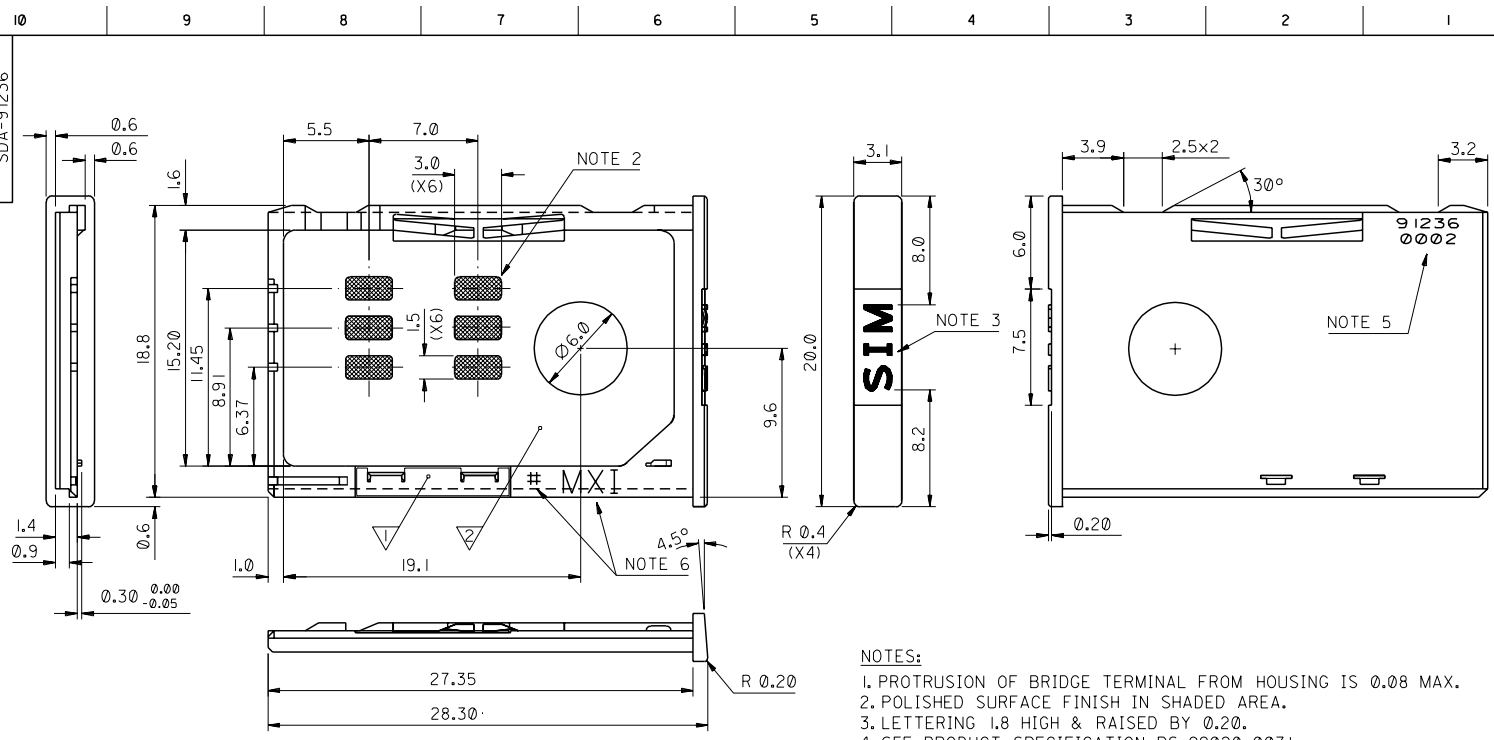


PART NO. 91236-0002
 DWG. NO. SDA-91236



- NOTES:**
1. PROTRUSION OF BRIDGE TERMINAL FROM HOUSING IS 0.08 MAX.
 2. POLISHED SURFACE FINISH IN SHADED AREA.
 3. LETTERING 1.8 HIGH & RAISED BY 0.20.
 4. SEE PRODUCT SPECIFICATION PS-99020-0071.
 5. PART I.D. TO BE 0.8 HIGH & RELIEVED 0.1 BELOW SURFACE.
 6. MOLEX LOGO 'MXI' & CAVITY NUMBER '#' TO BE 1.0 HIGH & RAISED 0.1max ABOVE SURFACE

ITEM	COMPONENT	QTY	MATERIAL
▽	TERMINAL	1	0.15 PHOSPHOR BRONZE 0.1um MIN Au OVER Pd/Ni IN CONTACT AREA
▽	HOUSING	1	GF PBT, BLACK

FOR PREVIOUS DRAWING ISSUES SEE MRI.

SEE SHEET 1.
 EC NO. DRWN: FDUGGAN 01/12/10
 CHK: APPR:

DESCRIPTION
 MAJOR
 CRITICAL
 C

QUALITY SYMBOLS	GENERAL TOLERANCES: (UNLESS SPECIFIED)	SCALE	DESIGN UNITS
4 PLACES ±0.1	mm INCH	4:1	<input checked="" type="checkbox"/> mm <input type="checkbox"/> INCH
3 PLACES ±0.2			
2 PLACES ±0.05			
1 PLACE ±0.10			
ANGULAR: ±	°		

DRAWN BY & DATE
 FINDORAK 00/08/28
 CHECKED BY & DATE
 D.JANNON 00/08/28
 APPROVED BY & DATE
 M.WILHITE 00/08/28

THIRD ANGLE PROJECTION		DIMENSIONS: <input type="checkbox"/> mm <input type="checkbox"/> INCH <input checked="" type="checkbox"/> mm ONLY		SHT	REV
TITLE: CARD HOLDER		MATERIAL NO. 91236-0002		DRAWING NO. SDA-91236	
MOLEX INCORPORATED		CAD FILENAME: S91236X2.DGN		SHEET NO. 2 OF	
DRAFT WHERE APPLICABLE MUST REMAIN WITHIN DIMENSIONS		THIS DRAWING CONTAINS INFORMATION THAT IS PROPRIETARY TO MOLEX INCORPORATED AND SHOULD NOT BE USED WITHOUT WRITTEN PERMISSION.		SIZE B	

7132-1283