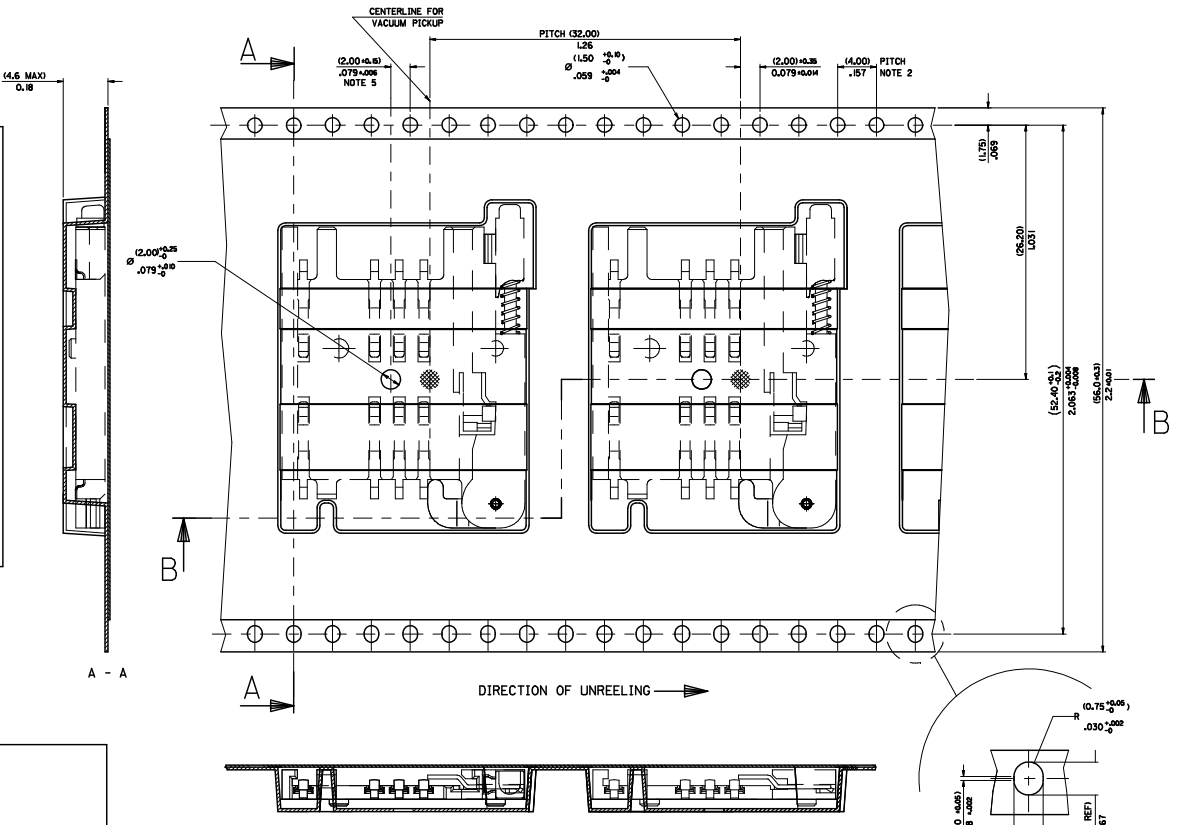
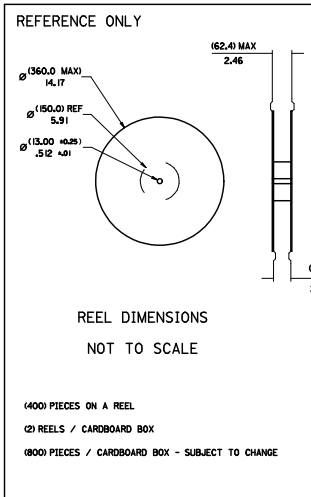
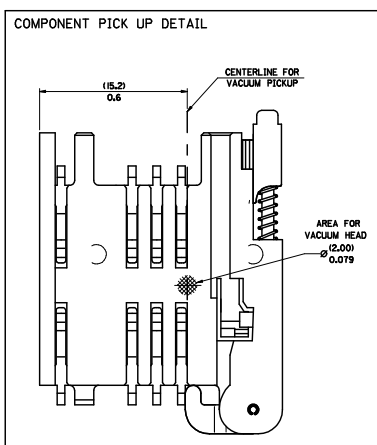


PART NO	DESCRIPTION
91228-0001 & 91228-3001	SIM CONNECTOR WITHOUT PEGS
91228-0002 & 91228-3002	SIM CONNECTOR WITH PEGS
91228-0012 & 91228-3012	SIM CONNECTOR WITH PEGS
91228-0007 & 91228-3007	SIM CONNECTOR WITH PEGS



- NOTES:**
- 1) MATERIAL :  
CARRIER TAPE : VOLUME CONDUCTIVE POLYSTYRENE, 0.40 REF THICK, BLACK  
COVER TAPE : COLD SEAL POLYESTER, 0.06 REF THICK, TRANSPARENT
  - 2) PITCH TOLERANCE OVER ANY 10 PITCHES ± 0.2 MM
  - 3) REEL FORCE OF THE COVER TAPE IS 0.1 N TO 1.0 N AT A MAXIMUM REEL SPEED OF 300 MM/MIN ± 10%
  - 4) PACKAGING SPEC, PK-91228-002
  - 5) REFERENCE TO IEO 286-3 EXCEPT WHERE NOTED

MOD. REV. LEVELS	DESCRIPTION	QUALITY SYMBOLS	GENERAL TOLERANCES (UNLESS SPECIFIED)		DIMENSION STYLE		SCALE	DESIGN UNITS	THIRD ANGLE PROJECTION
			mm	INCH	MM/IN	DATE			
0		4 PLACES ±	±	±	MM/IN	DATE	1:1	METRIC	☉
1		3 PLACES ±	±	±	MM/IN	DATE			
2		2 PLACES ±	±	±	MM/IN	DATE			
3		1 PLACE ±	±	±	MM/IN	DATE			
4		ANGULAR ±	±	±	MM/IN	DATE			
5		DRAFT WHERE APPLICABLE MUST REMAIN WITHIN DIMENSIONS			MM/IN	DATE			

SCALE 10:1

TO CUSTOMER ASSEMBLY MACHINE

MOLEX REEL

MOLEX INCORPORATED

SDA-91228-9001

1 OF 4