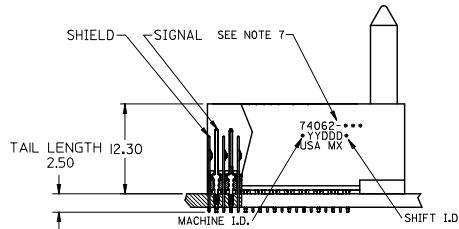
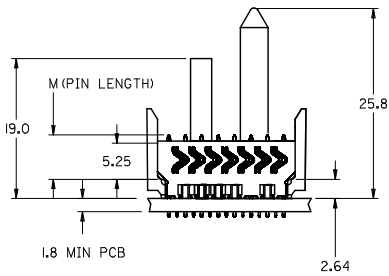
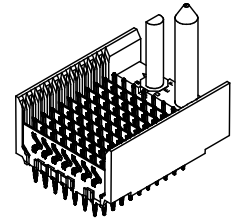
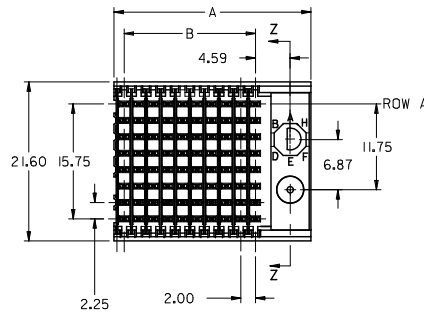
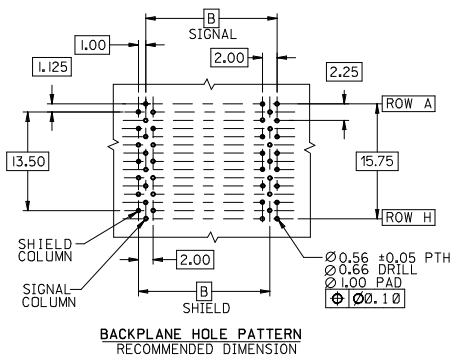


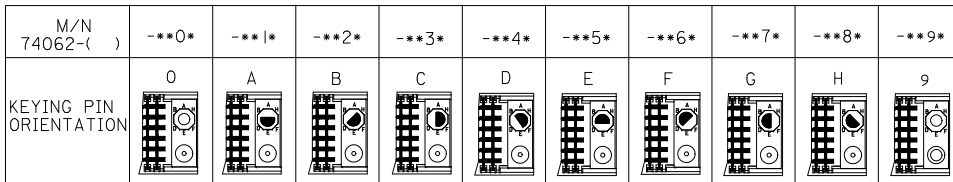
13 12 11 10 9 8 7 6 5 4 3 2 1



- NOTES:
- MATERIALS:
HOUSING - LIQUID CRYSTAL POLYMER (LCP),
GLASS-FILLED, UL 94V-0, COLOR: BLACK
SIGNAL AREA & SHIELD - COPPER ALLOY
 - FINISHES:
CONTACT AREA: SELECTIVE GOLD (Au)
PCB TAILS: SELECTIVE TIN/LEAD (Sn/Pb)
OR SELECTIVE MATTE TIN (Sn)
NICKEL (Ni) OVERALL.
 - THIS PART CONFORMS TO MOLEX PRODUCT SPECIFICATION PS-74031-999
 - FOR MIXED CONTACT LENGTHS CONSULT MOLEX FOR AVAILABILITY
 - FOR SPECIFIC MATERIAL NUMBERS & MATING INFORMATION REFER TO SHEET 2
 - PACKAGE PER PK-74061-003
 - MARK PART WITH PART NUMBER & DATE CODE APPROXIMATELY WHERE SHOWN

UPDATE VIEWS - HSG KEY SLOT EC NO: UEP2010-1574 DRWN: JIELION 2010/05/20 CHKD: JLAURX 1998/11/12 APPR: SHILLER 2010/07/14	QUALITY SYMBOLS $\nabla = 0$ $\nabla = 0$ $\nabla = 0$	GENERAL TOLERANCES (UNLESS SPECIFIED)		DIMENSION STYLE		SCALE	DESIGN UNITS	THIRD ANGLE PROJECTION	
				MM ONLY					
				DRAWN BY DATE		TITLE			
				CHECKED BY DATE		VHDM 8 ROW SHIELD END BACKPLANE SALES ASSEMBLY			
		APPROVED BY DATE		MATERIAL NO.		DOCUMENT NO.		SHEET NO.	
		ANGULAR $\pm 1/2^\circ$		SEE SHEET 2		SD-74062-002		1 OF 2	
		DRAFT WHERE APPLICABLE MUST REMAIN WITHIN DIMENSIONS		THIS DRAWING CONTAINS INFORMATION THAT IS PROPRIETARY TO MOLEX INCORPORATED AND SHOULD NOT BE USED WITHOUT WRITTEN PERMISSION					

13 12 11 10 9 8 7 6 5 4 3 2 1

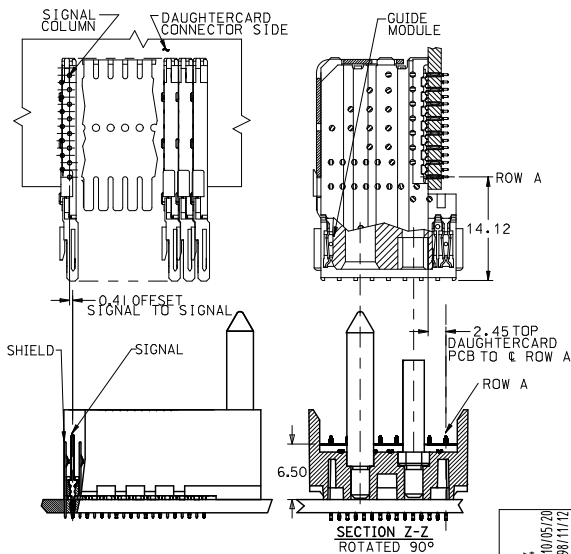


74062 - * * * *

NUMBER OF COLUMNS/PLATING
 10 = 10 COLUMN TIN/LEAD
 25 = 25 COLUMN TIN/LEAD
 90 = 10 COLUMN MATTE TIN
 85 = 25 COLUMN MATTE TIN

CONTACT LOAD
 (PIN LENGTH)
 1 & 6 = 4.75
 2 & 7 = 5.25
 3 & 8 = 5.75

NO GUIDE PIN
 NO KEYING PIN



PART NUMBER	COLUMN	NUMBER OF SIGNAL PIN	NUMBER OF SHIELD	A	B	M	Au (um) THICKNESS	Sn (um) THICKNESS
74062-#0*1	10	80	10	27.00	18.00	4.75	0.76	0.76-1.52
74062-#0*6							1.27	
74062-#5*1	25	200	25	57.00	48.00	6.25	0.76	
74062-#5*6							1.27	
74062-#0*2	10	80	10	27.00	18.00	6.25	0.76	
74062-#0*7							1.27	
74062-#5*2	25	200	25	57.00	48.00	4.25	0.76	
74062-#5*7							1.27	
74062-#0*3	10	80	10	27.00	18.00	4.25	0.76	
74062-#0*8							1.27	
74062-#5*3	25	200	25	57.00	48.00	5.15	0.76	
74062-#5*8							1.27	
74062-#0*4	10	80	10	27.00	18.00	5.15	0.76	
74062-#0*9							1.27	
74062-#5*4	25	200	25	57.00	48.00	5.15	0.76	
74062-#5*9							1.27	

SEE SHEET 1 EC NO. UEP2010-1574 DRAWN/JMELTON 2010/05/20 CHKD/JLAURX 1998/11/12 APPR/SMTLLR 2010/07/14	QUALITY SYMBOLS	GENERAL TOLERANCES (UNLESS SPECIFIED)	DIMENSION STYLE	SCALE	DESIGN UNITS	THIRD ANGLE PROJECTION	
	∇=0 ∇=0 ∇=0	4 PLACES ±--- ±--- 3 PLACES ±--- ±--- 2 PLACES ±--- ±--- 1 PLACE ±--- ±--- ANGULAR ±1/2°	MM ONLY	DRAWN BY DATE MWANG 1998/11/12 CHECKED BY DATE JLAURX 1998/11/12 APPROVED BY DATE CBIXLER 1998/11/12	METRIC	TITLE VHDM 8 ROW SHIELD END BACKPLANE SALES ASSEMBLY MOLEX INCORPORATED	DOCUMENT NO. SD-74062-002 SHEET NO. 2 OF 2
	DRAFT WHERE APPLICABLE MUST REMAIN WITHIN DIMENSIONS	SEE TABLE	THIS DRAWING CONTAINS INFORMATION THAT IS PROPRIETARY TO MOLEX INCORPORATED AND SHOULD NOT BE USED WITHOUT WRITTEN PERMISSION				
	REV	SIZE					

12 11 10 9 8 7 6 5 4 3 2 1