

4

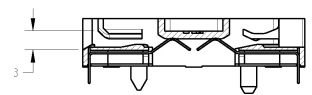
3

2

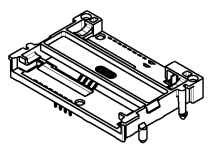
1

THIS DRAWING IS UNPUBLISHED. RELEASED FOR PUBLICATION  
 (C) COPYRIGHT BY TYCO ELECTRONICS CORPORATION. ALL RIGHTS RESERVED.

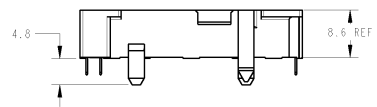
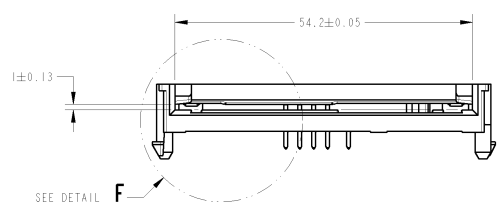
REV	DATE	BY	CHKD	DESCRIPTION
A	1982C014	RC	PJ	EH10-0478-04



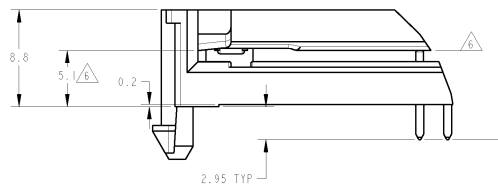
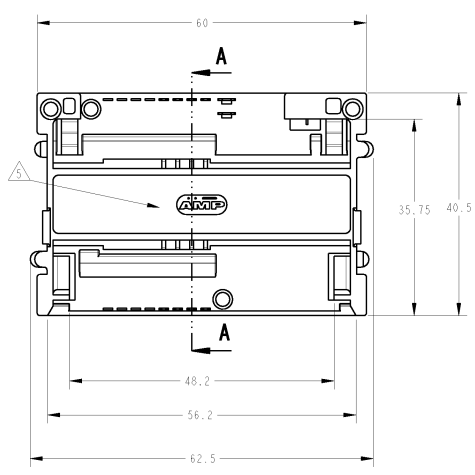
SECTION A-A



SCALE 1:1



- △ SMART CARD READER : PBT G-F, BLACK UL 94V0 -
- SIGNAL AND SWITCH CONTACTS : PHOSPHOR BRONZE. -
- △ ALL CONTACTS : 0.00076 GOLD ON MATING AREAS, -
- 0.0025 TIN (LEADFREE/MATTE) ON SOLDERTAILS, -
- ALL OVER 0.001 NICKEL. -
- △ AMP SMART CARD RECEPTACLE DESIGNED TO ACCEPT -
- ISO 7810-7816 TYPE INTEGRATED CIRCUIT SMART -
- CARDS (0.76mm REF. THICKNESS) -
- SEE SHEET 2/2 -
- 4 8 POSITIONS 5953398-1 SHOWN ON DRAWING -
- △ LOGO SHAPE AND POSITION VARY DEPENDING ON -
- MOLD CAVITY NUMBER. -
- △ DIMENSION APPLICABLE IN CARD CONTACT AREA ONLY. -
- SURFACE VARY DEPENDING ON MOLD CAVITY NUMBER. -

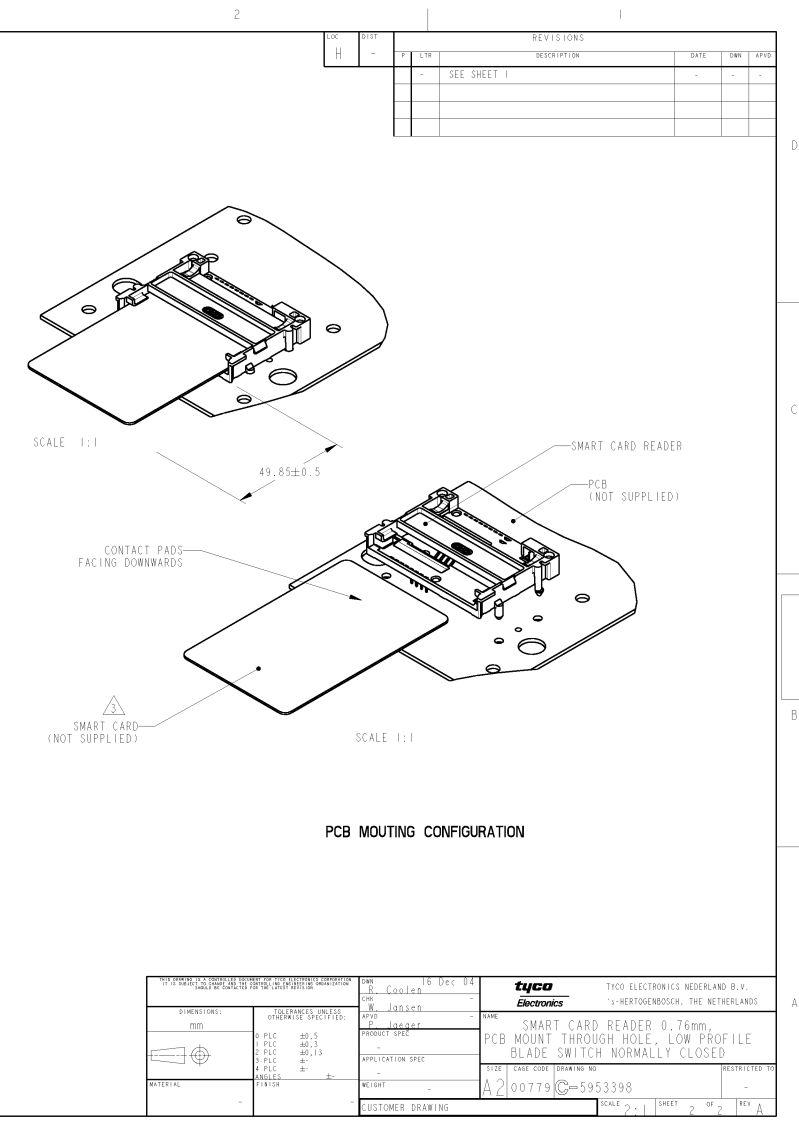
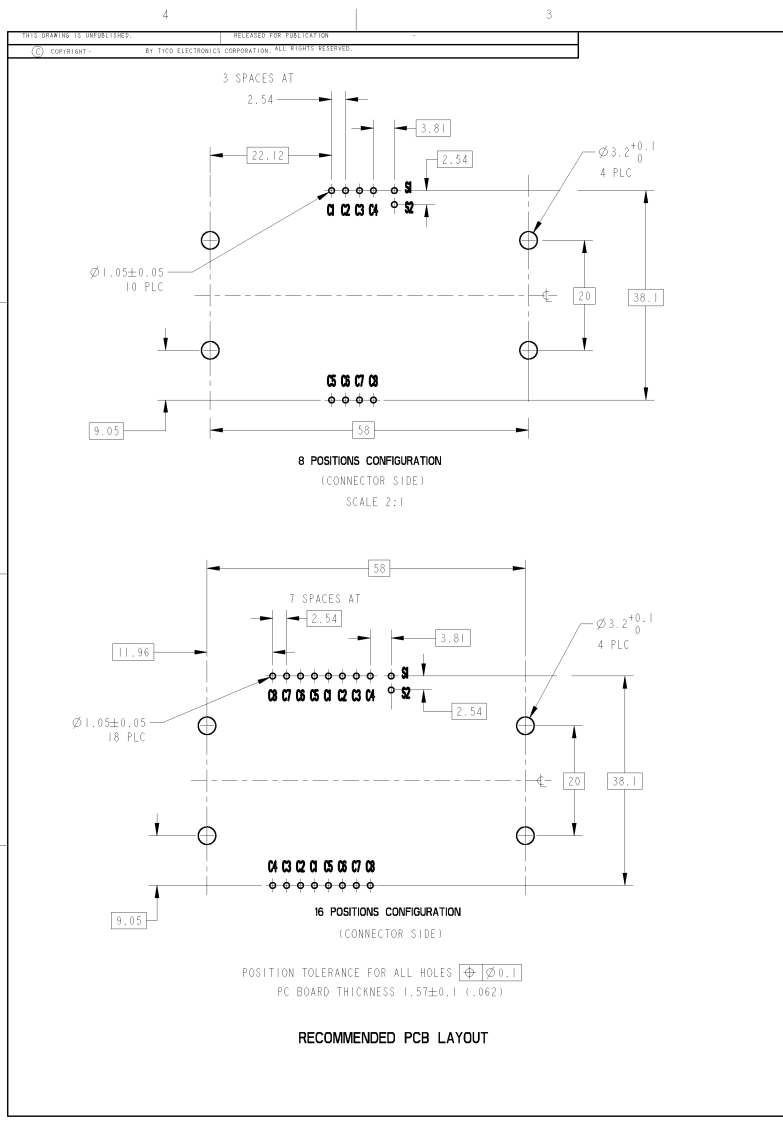


DETAIL F  
SCALE 4:1

PartNumber : 5953398-1	8 POSITIONS ISO 7816
PartNumber : 5953398-2	16 POSITIONS ISO / CP8 AFMOR

DIMENSIONS: mm 0 PLC ±0.5 1 PLC ±0.3 2 PLC ±0.15 3 PLC ± 4 ANGLES ± MATERIAL △		DWG NO 18 Dec 04 DR R. Loosen CH R. Jansen APP J. Jansen PRODUCT CODE 108-15202 APPLICATION SPEC - WEIGHT 8.579 g CUSTOMER DRAWING	tyco Electronics TYCO ELECTRONICS NEDERLAND B.V. 't HERTOGENBOSCH, THE NETHERLANDS SMART CARD READER 0.76mm, PCB MOUNT THROUGH HOLE, LOW PROFILE BLADE SWITCH NORMALLY CLOSED SIZE CODE DRAWING NO A2100779 C=5953398 SCALE 2:1 SHEET 1 OF 2 REV A	RESTRICTED TO
---	--	---	---	---------------

AMP 1471-6 REV 01/82/0000  
 P13/ENGINEER DRAWING



AMP 1471-6 REV 20040200