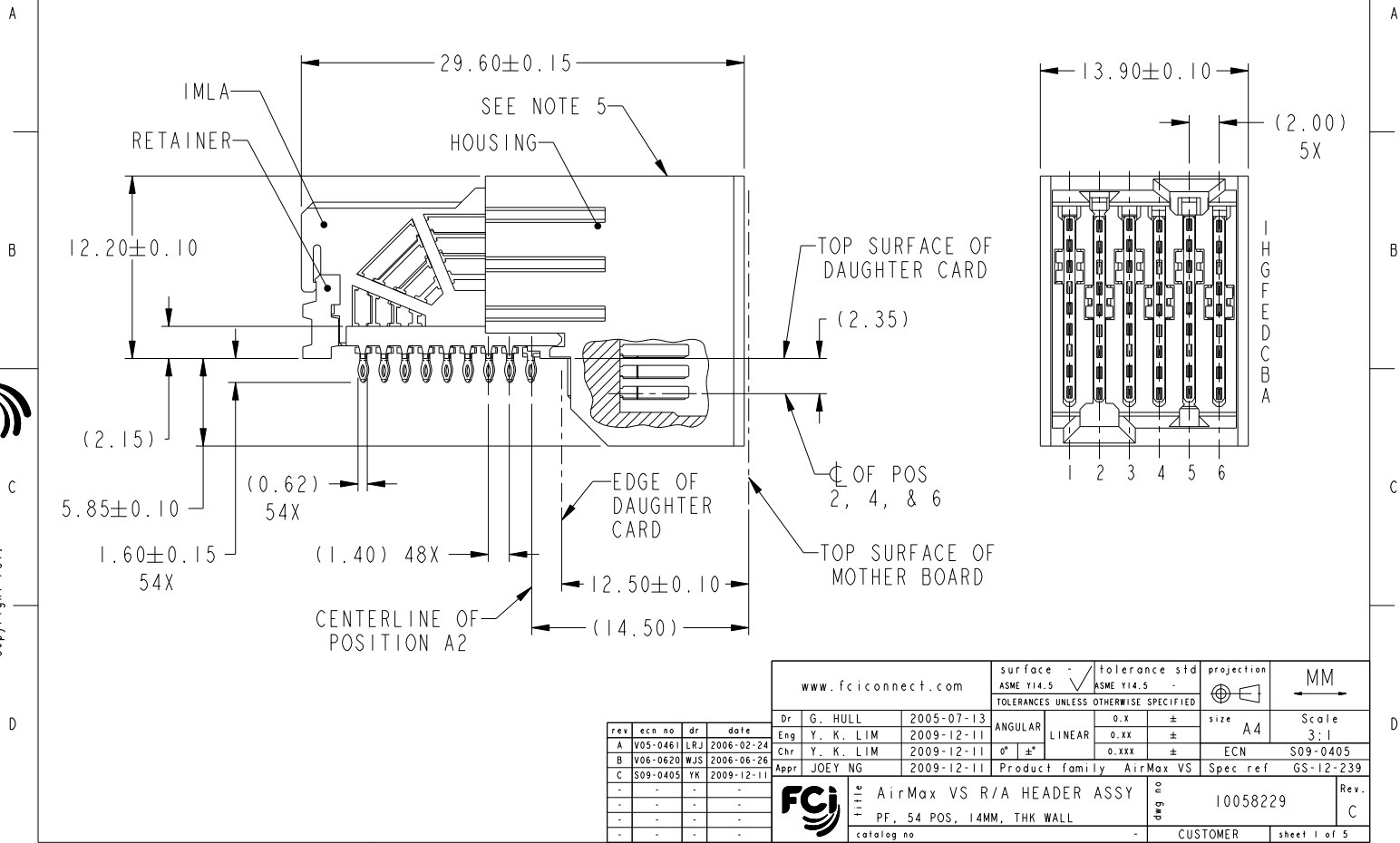


PRODUCT NUMBER  
SEE TABLE, SHEET 5



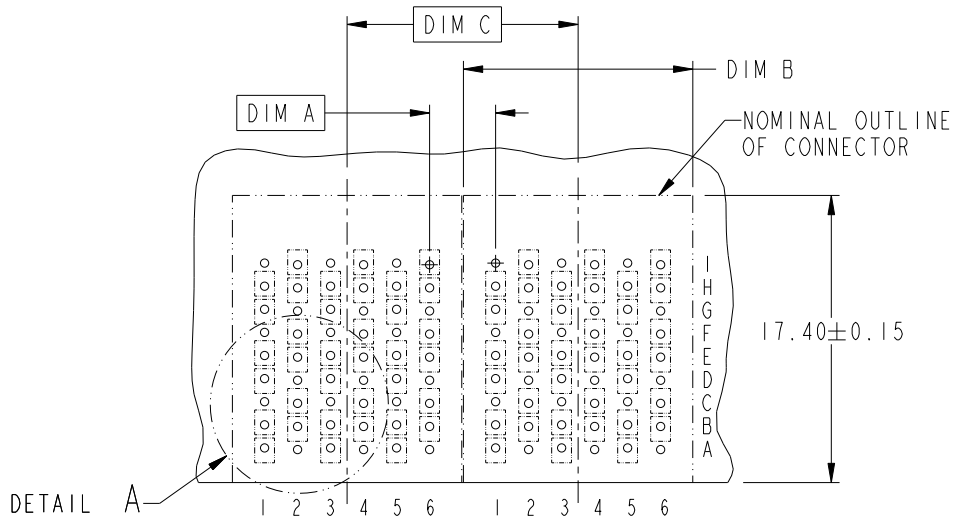
FCJ  
Copyright FCJ.

rev	ecn no	dr	date
A	V05-0461	LRJ	2006-02-24
B	V06-0620	WJS	2006-06-26
C	S09-0405	YK	2009-12-11
-	-	-	-
-	-	-	-
-	-	-	-

www.fciconnect.com		surface	tolerance std	projection	MM
		ASME Y14.5	ASME Y14.5		Scale
		TOLERANCES UNLESS OTHERWISE SPECIFIED			3:1
Dr	G. HULL	2005-07-13	ANGULAR	0.x	±
Eng	Y. K. LIM	2009-12-11	LINEAR	0.xx	±
Chr	Y. K. LIM	2009-12-11	0° ±	0.xxx	±
Appr	JOEY NG	2009-12-11	Product family	AirMax VS	ECN
				S09-0405	Spec ref
				GS-12-239	
				AirMax VS R/A HEADER ASSY	part no
				PF, 54 POS, 14MM, THK WALL	10058229
				Rev.	C
				catalog no	CUSTOMER
				sheet	1 of 5

REV F - 2006-04-17

DESCRIPTION	DIM A	DIM B	DIM C
2-14MM MODULES PLACED END-TO-END	4.00	13.90 2X	14.00
1-12MM MODULE & 1-14MM MODULE PLACED END-TO-END	3.00	11.90 1X & 13.90 1X	13.00



RECOMMENDED PCB LAYOUT  
FOR DIFFERENTIAL APPLICATIONS  
COMPONENT SIDE  
(TWO ADJACENT FOOTPRINTS SHOWN)  
NOTES 6 & 7

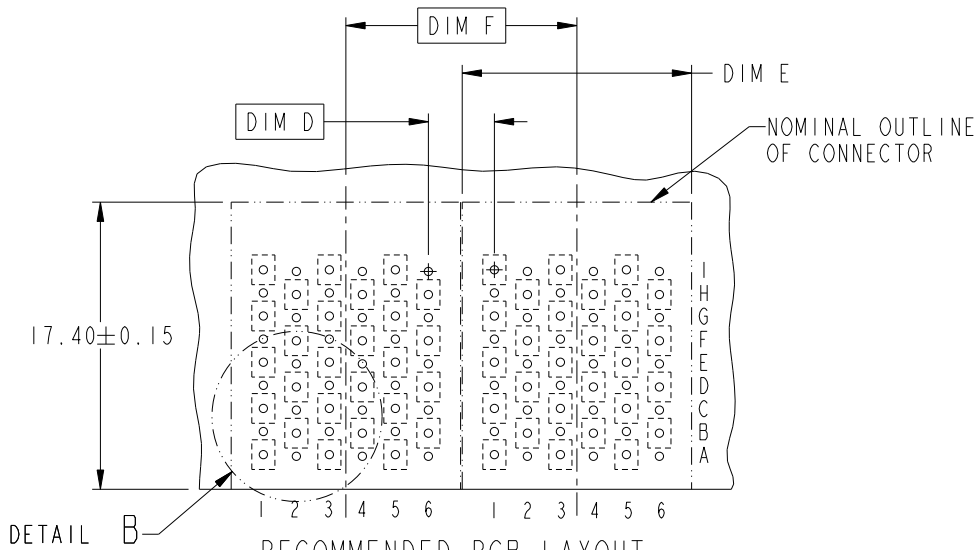
FCJ	Part no	AirMax VS R/A HEADER ASSY	Draw no	10058229	Rev.	C
	catalog no	PF, 54 POS, 14MM, THK WALL	-	CUSTOMER	sheet 2 of 5	

PDM: Rev:C STATUS:Released <sup>4</sup>Printed: Dec 01, 2010



Copyright FCJ.

DESCRIPTION	DIM D	DIM E	DIM F
2-14MM MODULES PLACED END-TO-END	4.00	13.90 2X	14.00
1-12MM MODULE & 1-14MM MODULE PLACED END-TO-END	3.00	11.90 1X & 13.90 1X	13.00



RECOMMENDED PCB LAYOUT  
FOR SINGLE ENDED APPLICATIONS  
COMPONENT SIDE  
(TWO ADJACENT FOOTPRINTS SHOWN)  
NOTES 6 & 7

	AirMax VS R/A HEADER ASSY	10058229	Rev. C
	PF, 54 POS, 14MM, THK WALL	CUSTOMER	sheet 3 of 5
catalog no	-		

REV F - 2010-04-17

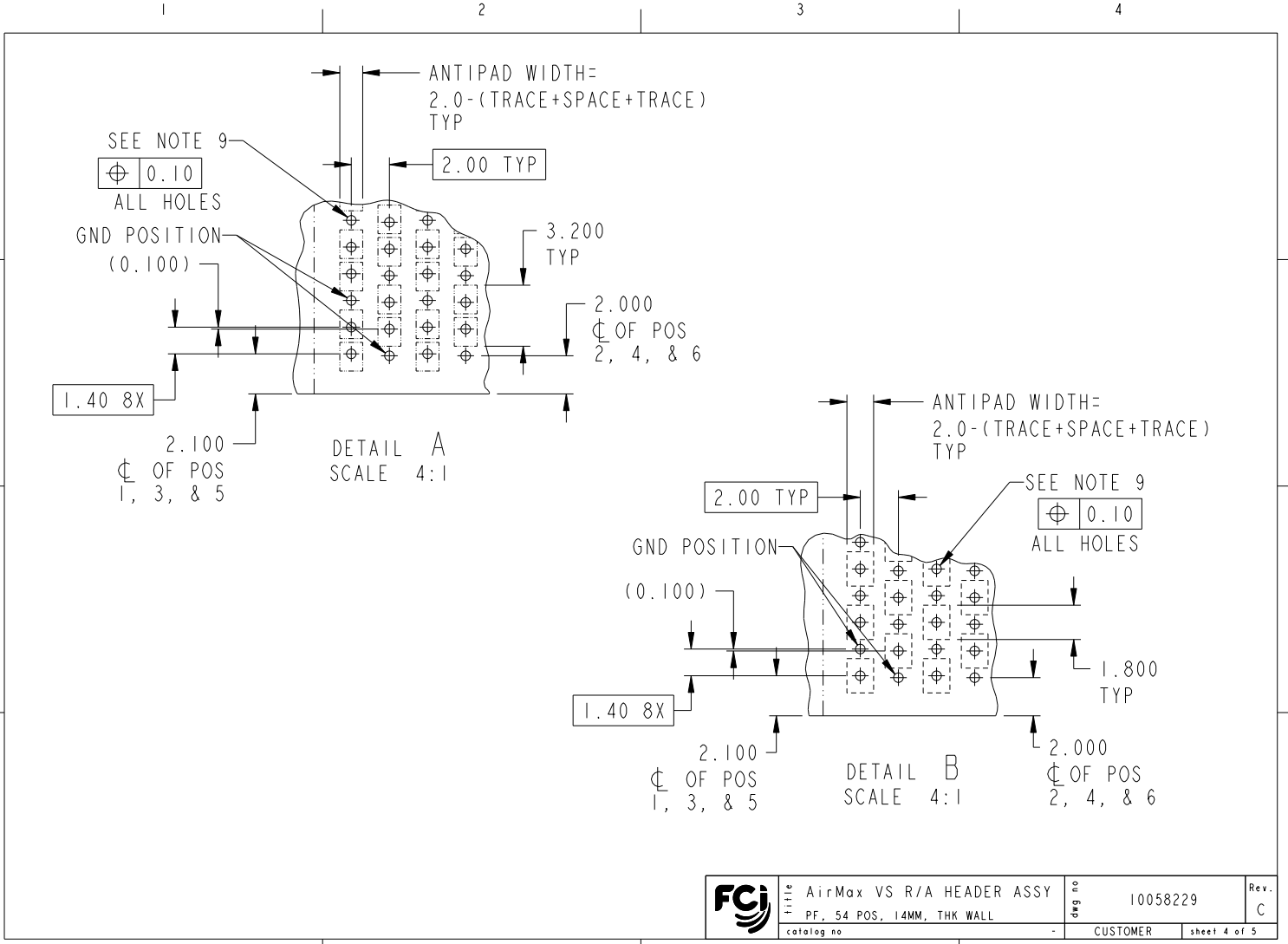
PDM: Rev:C

STATUS:Released

Printed: Dec 01, 2010



Copyright FCJ.



REV F - 2008-04-17

PART NUMBER	PRESS-FIT TAIL PLATING TYPE
10058229-101	TIN/LEAD ALLOY OVER NICKEL
10058229-101LF	TIN OVER NICKEL (LEAD FREE)

NOTES:

1. CONNECTOR MATERIALS:  
 HOUSING & RETAINER: HIGH TEMP THERMOPLASTIC, NATURAL, UL94V-0  
 IMLA PLASTIC: HIGH TEMP THERMOPLASTIC, BLACK, UL94V-0  
 CONTACT: COPPER ALLOY

2. CONTACT PLATING:  
 SEPARABLE INTERFACE:  
 PERFORMANCE-BASED PLATING, QUALIFIED TO MEET THE REQUIREMENTS OF FCI PRODUCT SPECIFICATION GS-12-239 INCLUDING TELCORDIA GR-1217-CORE (NOVEMBER 1995) CENTRAL OFFICE TEST SEQUENCE



PRESS-FIT TAILS: SEE TABLE

3. PRODUCT SPECIFICATION: GS-12-239

4. APPLICATION SPECIFICATION: GS-20-035

5. PRODUCT MARKING, (PART NUMBER & LOT CODE), ON THIS SURFACE

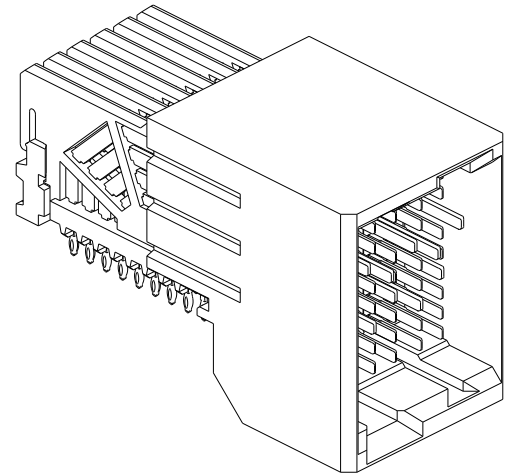
6. REFER TO CUSTOMER DRAWING 10035911 FOR INFORMATION REGARDING PCB LAYOUT OF POWER AND GUIDE MODULES RELATIVE TO SIGNAL MODULES

7. POSITIONS F OF ODD NUMBERED COLUMNS AND POSITIONS G OF EVEN NUMBERED COLUMNS CORRESPOND TO EARLY MATE HEADER PINS

8. THERE IS NO GROUND BUSSING WITHIN THE CONNECTOR SYSTEM

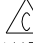
9. REFER TO CUSTOMER DRAWING 10045979 FOR INFORMATION ON PCB HOLE DIAMETERS AND PLATING OPTIONS.


10. THIS PRODUCT MEETS EUROPEAN UNION DIRECTIVES AND OTHER COUNTRY REGULATIONS AS DESCRIBED IN GS-22-008.



11. THE HOUSING WILL WITHSTAND EXPOSURE TO 260°C PEAK TEMPERATURE FOR 40 SECONDS IN A CONVECTION, INFRA-RED OR VAPOR PHASE REFLOW OVEN.

12. PACKAGING MEETS GS-14-920 LEAD FREE LABELING SPECIFICATION.

13. A  SYMBOL WILL BE NEXT TO ANY DIMENSION, VIEW, OR NOTE WHICH HAS BEEN MODIFIED WITH THE CURRENT DRAWING REVISION.

	title	AirMax VS R/A HEADER ASSY	drwg no	10058229	Rev.	C
		PF, 54 POS, 14MM, THK WALL				
	catalog no	-	CUSTOMER	sheet	5 of 5	

REV F - 2008-04-17

PDM: Rev:C

STATUS:Released

4 Printed: Dec 01, 2010



Copyright FCI.