

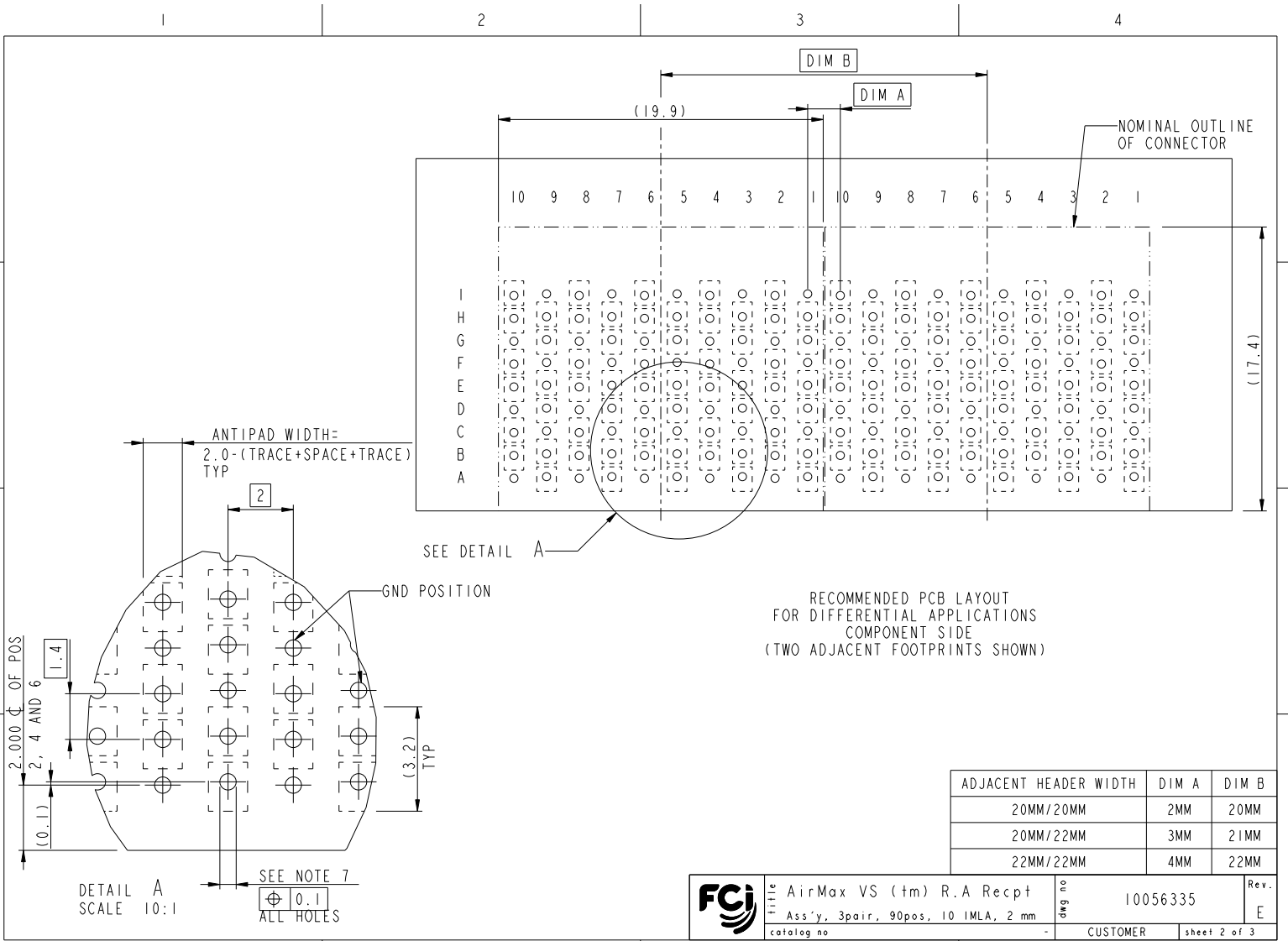
rev	ecn no	dr	date
A	H06-0054	VMO	2006-04-07
B	S08-0036	LS	2008-02-11
C	S08-0248	LS	2008-07-29
D	S09-0324	KHL	2009-10-20
E	S09-0404	KHL	2009-12-10
-	-	-	-
-	-	-	-

www.fciconnect.com		surface	-	tolerance std	projection	mm	
TOLERANCES UNLESS OTHERWISE SPECIFIED							
Dr	H V WOENSEL	2005-06-21	ANGULAR	0.X	±0.3	size	A3
Eng	L.S NGWE	2008-07-29	LINEAR	0.XX	±0.10	Scale	5:1
Chr	KH LEE	2009-12-10	0° ±°	0.XXX	±0.050	ECN	S09-0404
Appr	JOEY NG	2009-12-10	Product family		- Spec ref		
FCI		title		AirMax VS (tm) R.A Recpt		Rev.	
-		-		Ass'y, 3pair, 90pos, 10 IMLA, 2 mm		10056335	
-		-		catalog no		CUSTOMER sheet 1 of 3	

Copyright FCI

REV F - 2006-04-17

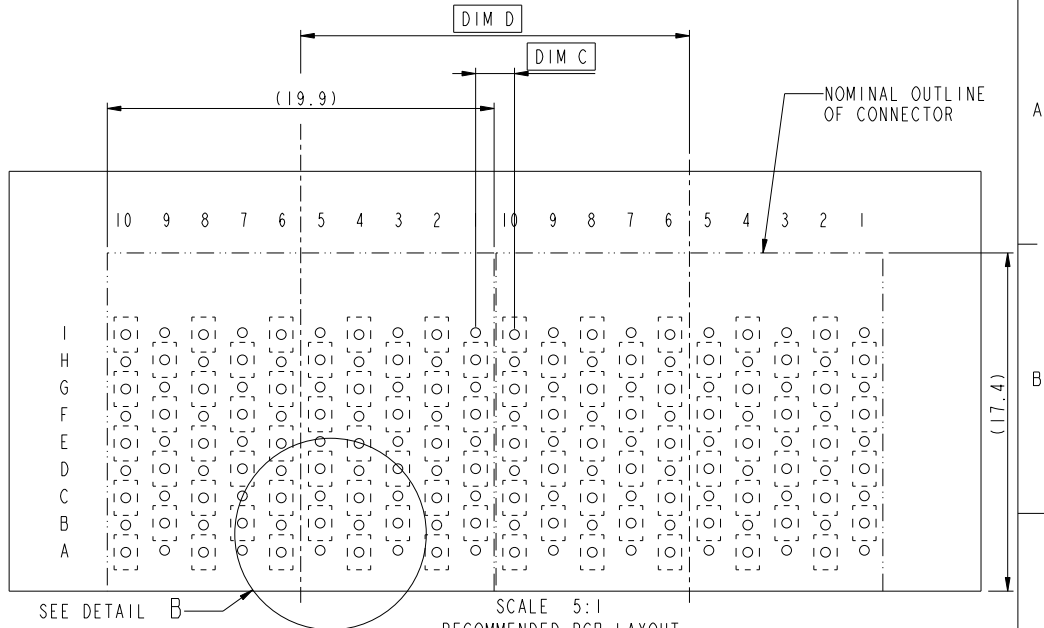
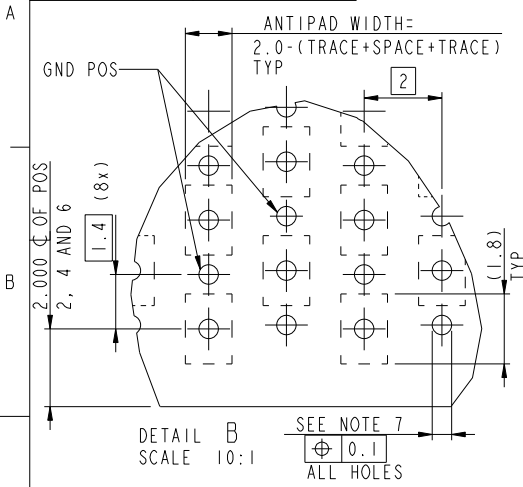
FDM: Rev:E STATUS:Released Printed: Dec 01, 2010



FCI	title	AirMax VS (tm) R.A Recpt	dwg no	10056335	Rev.	E
	Ass'y, 3pair, 90pos, 10 IMLA, 2 mm					
	catalog no			CUSTOMER	sheet 2 of 3	

REV F - 2006-04-17

PART NUMBER	PRESS FIT TAIL PLATING TYPE
10056335-101	TIN/LEAD ALLOY OVER NICKEL
10056335-101LF	LEAD FREE



NOTES:

- CONNECTOR MATERIALS:
HOUSING & RETAINER: HIGH TEMP THERMOPLASTIC, NATURAL, UL94V-0
IMLA PLASTIC: HIGH TEMP PLASTIC, BLACK, UL94V-0
CONTACT: COPPER ALLOY
- CONTACT PLATING:
SEPARABLE INTERFACE: PERFORMANCE BASED PLATING, QUALIFIED TO MEET THE REQUIREMENTS OF FCI PRODUCT SPECIFICATION GS-12-239, INCLUDING TELCORDIA GR-1217-CORE (NOV 1995) CENTRAL OFFICE TEST SEQUENCE.
PRESS-FIT TAILS: SEE TABLE
- PRODUCT SPECIFICATION: GS-12-239
- APPLICATION SPECIFICATION: GS-20-035
- PRODUCT MARKING, (PARTNUMBER & LOT CODE), ON THIS SURFACE
- THERE IS NO GROUND BUSSING WITHIN THE CONNECTOR SYSTEM.
- SEE CUSTOMER DRAWING 10045979 FOR INFORMATION ON PCB HOLE DIAMETER AND PLATING OPTIONS
- THIS PRODUCT MEETS EUROPEAN UNION DIRECTIVES AND OTHER COUNTRY REGULATIONS AS DESCRIBED IN GS-22-008.
- THE HOUSING WILL WITHSTAND EXPOSURE TO 260 °C PEAK TEMPERATURE FOR 40 SECONDS IN A CONVECTION, INFRA-RED OR VAPOR PHASE REFLOW OVEN.

SCALE 5:1
RECOMMENDED PCB LAYOUT
FOR SINGLE ENDED APPLICATIONS
COMPONENT SIDE
(TWO ADJACENT FOOTPRINTS SHOWN)

ADJACENT HEADER WIDTH	DIM C	DIM D
20MM/20MM	2MM	20MM
20MM/22MM	3MM	21MM
22MM/22MM	4MM	22MM

- PACKAGING MEETS GS-14-920 LEAD FREE LABELLING SPECIFICATION.
- A A E SYMBOL WILL BE NEXT TO ANY DIMENSION, VIEW, OR NOTE WHICH HAS BEEN MODIFIED WITH THE CURRENT DRAWING REVISION.

	title	AirMax VS (tm) R.A Recpt	dwg no	10056335	Rev.	
	Ass'y, 3pair, 90pos, 10 IMLA, 2 mm				E	
catalog no	CUSTOMER			sheet 3 of 3		

REV F - 2006-04-17