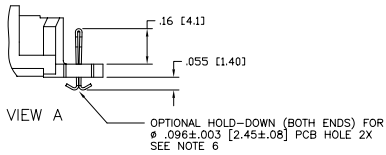
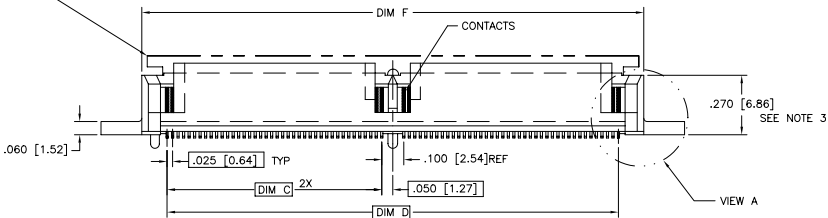
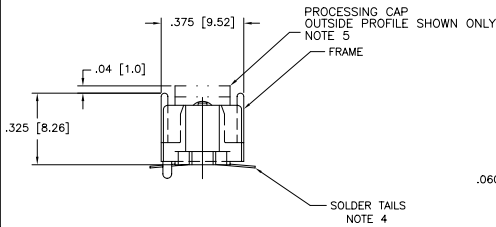
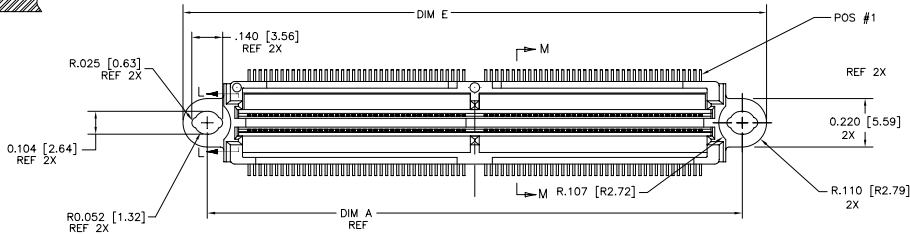
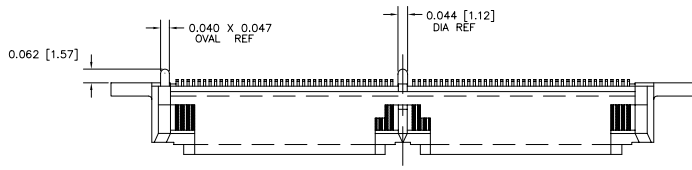
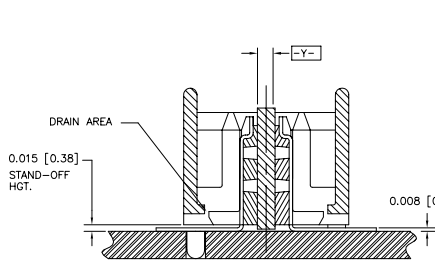


PRODUCT NUMBER
SEE TABLE



mat'l. code		surface		tolerance		projection		product family	
-		ISO 1302		ISO 406		ISO 1101		MICROPAX	
itr	ecn	no	dr	tolerances unless otherwise specified		INCH/MM		title	
G	v50646	MRC	6/23/95	angles	linear	.XX±.01/.3		MICROPAX .025M SMT	
H	v51287	MRC	10/20/95	0°±2°		.XXX±.005/.13		PLUG DOUBLE MODULE	
J	E70095	SAR	7/22/97			.XXXX±.0020/.051		dwg no	
K	v01503	CGD	6/12/00	dr	T. HOUTZ	3/04/93		sheet 1 of 3	
L	v12115	CRG	8/17/01	engr	M. HAHN	3/04/93		size	
M	M05-0082	MHT	5/06/05	chr	M. HAHN	3/04/93		91294	
N	M06-0279	AEA	7/22/06	appd	M. HAHN	3/04/93		A3	
sheet	revision	N	N	N					
index	sheet	1	2	3					

PRODUCT	NO. OF CONTACTS	DIM A	DIM B	DIM C	DIM D	DIM E	DIM F	DIM G	CONTACT PLATING NOTE 2	HOLD-DOWN	PROCESSING CAP
91294-001	120	1.930/50.95	.830/21.08	.725/18.42	1.550/39.37	2.150/54.61	1.790/45.47	.965/24.51	30 GXT	OPTIONAL SEE NOTE 6	CAPS INSTALLED ON CONNECTOR
-002	160	2.430/61.72	1.080/27.43	.975/24.76	2.050/52.07	2.650/67.31	2.290/58.16	1.215/30.86	30 GXT		NOT SHIPPED ON CONNECTOR CAPS SUPPLIED LOOSE PIECE
-003	200	2.930/74.42	1.330/33.78	1.225/31.12	2.550/64.77	3.150/80.01	2.790/70.87	1.465/37.21	30 GXT		
-033	200	2.930/74.42	1.330/33.78	1.225/31.12	2.550/64.77	3.150/80.01	2.790/70.87	1.465/37.21	30 GXT		
91294-413	200	2.930/74.42	1.330/33.78	1.225/31.12	2.550/64.77	3.150/80.01	2.790/70.87	1.465/37.21	60 GXT		

PRODUCT	NO. OF CONTACTS	DIM A	DIM B	DIM C	DIM D	DIM E	DIM F	DIM G	CONTACT PLATING NOTE 2	HOLD-DOWN	PROCESSING CAP
91294-001LF	120	1.930/50.95	.830/21.08	.725/18.42	1.550/39.37	2.150/54.61	1.790/45.47	.965/24.51	30 GXT	OPTIONAL SEE NOTE 6	CAPS INSTALLED ON CONNECTOR
-002LF	160	2.430/61.72	1.080/27.43	.975/24.76	2.050/52.07	2.650/67.31	2.290/58.16	1.215/30.86	30 GXT		NOT SHIPPED ON CONNECTOR CAPS SUPPLIED LOOSE PIECE
-003LF	200	2.930/74.42	1.330/33.78	1.225/31.12	2.550/64.77	3.150/80.01	2.790/70.87	1.465/37.21	30 GXT		
-033LF	200	2.930/74.42	1.330/33.78	1.225/31.12	2.550/64.77	3.150/80.01	2.790/70.87	1.465/37.21	30 GXT		
91294-413LF	200	2.930/74.42	1.330/33.78	1.225/31.12	2.550/64.77	3.150/80.01	2.790/70.87	1.465/37.21	60 GXT		

LEAD FREE OPTION;

91294-001LF 120 1.930/50.95 .830/21.08 .725/18.42 1.550/39.37 2.150/54.61 1.790/45.47 .965/24.51 30 GXT

-002LF 160 2.430/61.72 1.080/27.43 .975/24.76 2.050/52.07 2.650/67.31 2.290/58.16 1.215/30.86 30 GXT

-003LF 200 2.930/74.42 1.330/33.78 1.225/31.12 2.550/64.77 3.150/80.01 2.790/70.87 1.465/37.21 30 GXT

-033LF 200 2.930/74.42 1.330/33.78 1.225/31.12 2.550/64.77 3.150/80.01 2.790/70.87 1.465/37.21 30 GXT

91294-413LF 200 2.930/74.42 1.330/33.78 1.225/31.12 2.550/64.77 3.150/80.01 2.790/70.87 1.465/37.21 60 GXT

NOTES:

① MATERIALS:
DIELECTRIC: LCP
CONTACTS: PHOS BRONZE
FRAME: ZINC ALLOY #3

② PLATING:
SOLDER TAILS: 150 u"/3.81um Sn Pb
FRAME: 100u"/2.54um NICKEL
CONTACTS: 30u"/.76um GXT OVER 50u"/1.27um Ni
OR 60u"/1.52um GXT OVER 75u"/1.90um Ni.
LEAD FREE OPTION:
SOLDER TAILS: 150 u"/3.81um Sn
FRAME: 100u"/2.54um NICKEL
CONTACTS: 30u"/.76um GXT OVER 50u"/1.27um Ni
OR 60u"/1.52um GXT OVER 75u"/1.90um Ni.

③ WHEN CONNECTOR IS MATED WITH OPPOSITE HALF, THE PARALLEL BD. TO BD. HGT. IS .47 ±.01. (APPLYS TO VERT. THRU & SURFACE MT. STYLES)

④ THE SOLDER TAILS ON THIS PRODUCT ARE DESIGNED TO BE COMPLIANT IN ORDER TO ACCOMMODATE PRINTED CIRCUIT BOARD DIMENSIONAL VARIATIONS. THEREFORE, HOLDDOWN HARDWARE IS REQUIRED TO SECURE THE CONNECTOR TO THE PRINTED CIRCUIT BOARD FOR MOST TYPES OF SOLDER REFLOW OPERATIONS. FOR FURTHER APPLICATION DATA, INCLUDING HOLE SIZES FOR VARIOUS TYPES OF HARDWARE, SEE TA-932.

⑤ DO NOT REMOVE PROCESSING CAP UNTIL SOLDERING IS COMPLETED.

⑥ BY ADDING LETTER "H" TO TABULATED P/N, THE OPTIONAL HOLD-DOWNS WILL BE SUPPLIED INTEGRAL W/CONNECTOR. EXAMPLE: XXXX-XXXH (HOLD-DOWN)

⑦ PART NUMBERS WITH LF SUFFIX AT THE END ARE LEAD FREE.

8. THE HOUSING WILL WITHSTAND EXPOSURE TO 260°C PEAK TEMPERATURE FOR 20 SECONDS IN A CONVECTION, INFRA-RED OR VAPOR PHASE REFLOW OVEN.

⑨ IF "LF" P/N THE PRODUCT MEETS EUROPEAN UNION DIRECTIVES AND OTHER COUNTRY REGULATION AS DESCRIBED IN GS-22-008.

mat'l. code	surface	tolerance	projection	product family
-	ISO 1302	ISO 406	ISO 1101	MICROPAX
ltr ecn no dr date	tolerances unless otherwise specified	angles	linear	title
N	.XX±.01/.3	0°±2'	INCH/MM	MICROPAX .025M SMT
	.XXX±.005/.13		scale 1:1	PLUG DOUBLE MODULE
	.XXXX±.0020/.051			dwg no 91294 sheet 3 of 3 size A3
dr	T. HOUTZ	3/04/93		type Product Customer Drawing
enrg	M. HAHN	3/04/93		
chr	M. HAHN	3/04/93		
appd	M. HAHN	3/04/93		
sheet index	revision sheet			