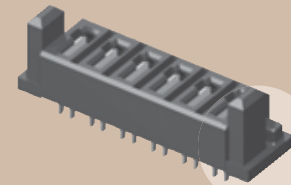


MPS-02-7.70-01-L-V



MPS-06-7.70-01-L-V

# POWERSTRIP™/25 SOCKET MPS SERIES

## SPECIFICATIONS

For complete specifications see [www.samtec.com?MPS](http://www.samtec.com?MPS)

**Insulator Material:**

Black LCP

**Terminal Material:**

Copper Alloy

**Plating:**

Sn or Au over 50µ" (1.27µm) Ni

**Operating Temp Range:**

-55°C to +105°C with Tin

-55°C to +125°C with Gold

**RoHS Compliant:**

Yes

**Processing:**

**Max Processing Temp:**

230°C for 60 seconds, or

260°C for 20 seconds 3x

**Lead-Free Solderable:**

Yes

Mates with:  
MPT

Dual leaf blade contacts

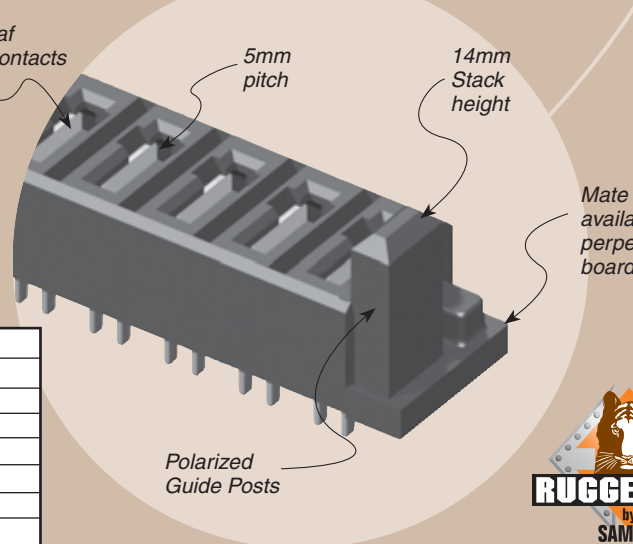
5mm pitch

14mm Stack height

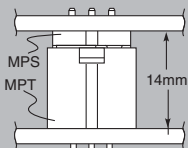
Mate available for perpendicular board mating

AMBIENT TEMP	CURRENT RATING	
	MPT-V/MPS-V	
	2 PINS	4 PINS
20°C	48A	40A
40°C	40A	35A
60°C	33A	29A
75°C	27.9A	23.2A

-T PLATING



## STACK HEIGHT



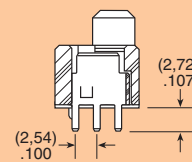
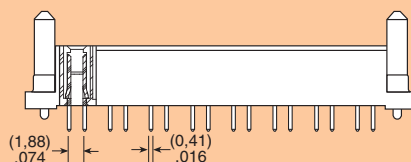
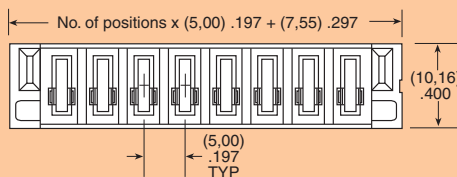
## ALSO AVAILABLE

- Power/Signal combination Sockets. See MPSC Series.
- High Power Sockets. See PES Series.

## APPLICATION SPECIFIC OPTION

- Locking Clip Call Samtec.

<b>MPS</b>	<b>POWER PINS</b>	<b>LEAD STYLE</b>	<b>TAIL LENGTH</b>	<b>PLATING OPTION</b>	<b>V</b>
		<b>-7.70</b> = (7,70mm) .303"	<b>-01</b> = Use with (1,60mm) .062" Thick PCB	<b>-L</b> = 10µ" (0,25µm) Gold on contact, Matte Tin on tail	
	<b>-02, -04, -06, -08</b>			<b>-T</b> = Matte Tin	



**Note:** Some sizes, styles and options are non-standard, non-returnable.

Due to technical progress, all designs, specifications and components are subject to change without notice.

[WWW.SAMTEC.COM](http://WWW.SAMTEC.COM)

SAMTEC USA • Tel: 1-800-SAMTEC-9 or 812-944-6733 • Fax: 812-948-5047

SAMTEC GERMANY • Tel: +49 (0) 89 / 89460-0 • Fax: +49 (0) 89 / 89460-299

SAMTEC NORDIC/BALTIC • Tel: +46-84477280 • Fax: +46-87420413

SAMTEC ASIA PACIFIC • Tel: 65 6745-5955 • Fax: 65 6841-1502

SAMTEC JAPAN • Tel: 045-475-1385 • Fax: 045-475-1340

SAMTEC HONG KONG • Tel: 852-2600-4850 • Fax: 852-2600-4841

SAMTEC KOREA • Tel: 82-31-717-5685 • Fax: 82-31-717-5681

SAMTEC SILICON VALLEY • Tel: 408-395-5900 • Fax: 408-395-1520

SAMTEC FRANCE • Tel: 33 01 60 95 06 60 • Fax: 33 01 60 95 06 61

SAMTEC ISRAEL • Tel: 972-3-7526600 • Fax: 972-3-7526690

SAMTEC CHINA • Tel: 86-21-61103766 • Fax: 86-21-5423 4575

SAMTEC UK • Tel: 44 01236 739292 • Fax: 44 01236 727113

SAMTEC ITALY • Tel: 39 039 6890337 • Fax: 39 039 6890315

SAMTEC INDIA • Tel: +91-80-3272 1612 • Fax: +91-80-4152 8187

SAMTEC TAIWAN • Tel: 886-2-2735-6109 • Fax: 886-2-2735-5036

SAMTEC ANZ • Tel: 613 9512 7747 • Fax: 613 9512 7745

SAMTEC SOUTH AFRICA • Tel: 27 11 452 8112 • Fax: 27 86 6714432

SAMTEC SOUTH AFRICA • Tel: 27 11 452 8112 • Fax: 27 86 6714432

SAMTEC SOUTH AFRICA • Tel: 27 11 452 8112 • Fax: 27 86 6714432