

# Customer Information Sheet

DRAWING No.: M20-785XXXX

IF IN DOUBT - ASK

©

NOT TO SCALE

THIRD ANGLE PROJECTION

ALL DIMENSIONS IN mm

**SPECIFICATION:**

**MATERIAL:**  
 MOULDING = HIGH TEMP. NYLON 6T UL94V-0, BLACK  
 CONTACTS = PHOSPHOR BRONZE  
**FINISH (OVER NICKEL):**  
 42 = GOLD ON CONTACT AREA, 100% TIN ON TAILS  
 46 = 100% ALL OVER TIN  
**ELECTRICAL:**  
 CURRENT RATING = 3A  
 VOLTAGE RATING = 500V AC  
 CONTACT RESISTANCE = 20mΩ MAX  
 INSULATION RESISTANCE = 5000MΩ MIN  
**MECHANICAL:**  
 INSERTION FORCE = 2.0N MAX  
 WITHDRAWAL FORCE = 0.3N MAX  
**ENVIRONMENTAL:**  
 TEMPERATURE RANGE = -40°C TO +105°C  
**PACKING:**  
 TUBE  
 FOR COMPLETE SPECIFICATION, SEE COMPONENT SPECIFICATION COOIXX (LATEST ISSUE)

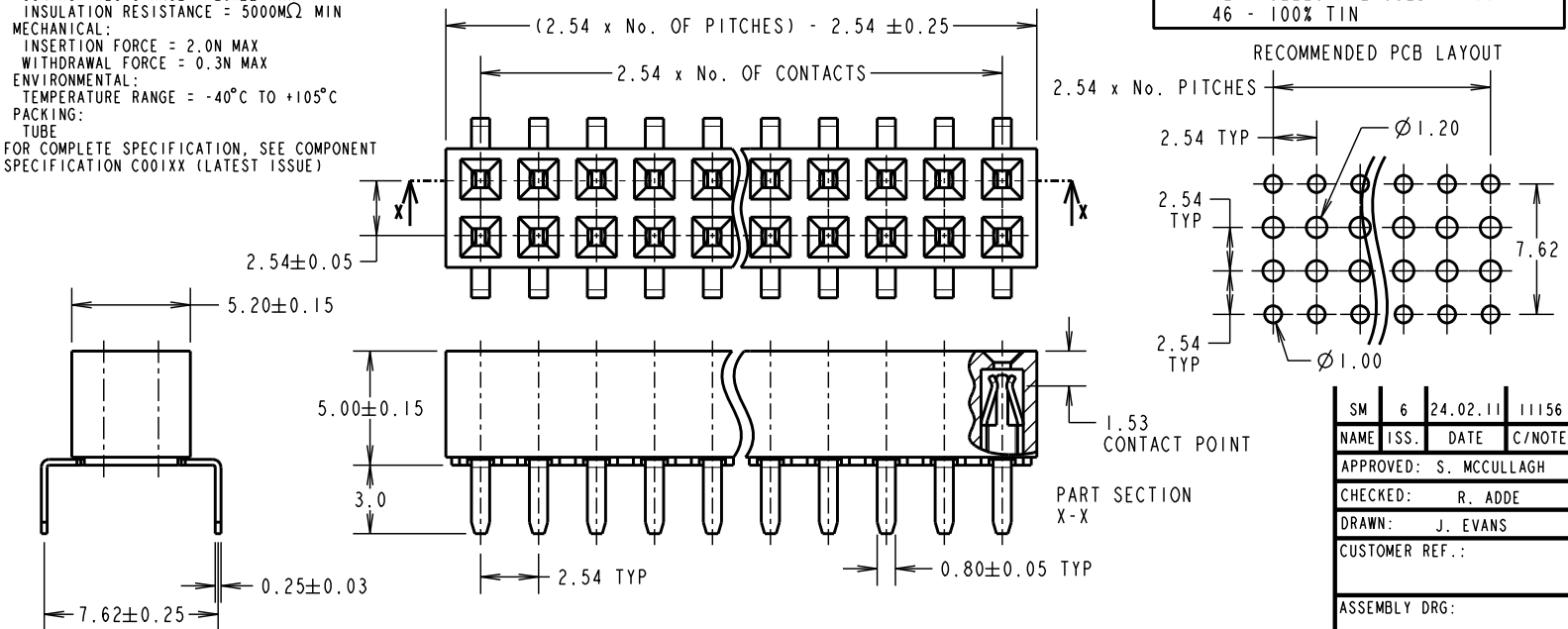
ORDER CODE:

**M20-785XXXX**

No. OF WAYS PER ROW  
 02 - 40

FINISH:

42 - SELECTIVE GOLD + 100% TIN  
 46 - 100% TIN



**HARWIN**

HARWIN USA  
 TEL: 603 893 5376  
 FAX: 603 893 5396  
 mis@harwin.com

HARWIN Europe (UK)  
 TEL: 023 9231 4545  
 FAX: 023 9231 4590  
 mis@harwin.co.uk

HARWIN Asia  
 TEL: +65 6 779 4909  
 FAX: +65 6 779 3868  
 mis@harwin.com.sg

THIS DRAWING AND ANY INFORMATION OR DESCRIPTIVE MATTER SET OUT HEREON ARE CONFIDENTIAL AND COPYRIGHT PROPERTY OF THE HARWIN GROUP AND MUST NOT BE DISCLOSED, LOANED, COPIED OR USED FOR MANUFACTURING, TENDERING OR FOR ANY OTHER PURPOSE WITHOUT THEIR WRITTEN PERMISSION.

**TOLERANCES**  
 X. = ±1mm  
 X.X = ±0.25mm  
 X.XX = ±0.10mm  
 X.XXX = ±0.01mm  
 ANGLES = ±5°  
 UNLESS STATED

**MATERIAL:**

SEE ABOVE

**FINISH:** SEE ABOVE

**S/AREA:**

mm<sup>2</sup>

**TITLE:**

2.54mm PITCH DIL PC TAIL  
 DUAL ENTRY SOCKET ASSY

**DRAWING NUMBER:**

**M20-785XXXX**

SHT  
 2 OF 2