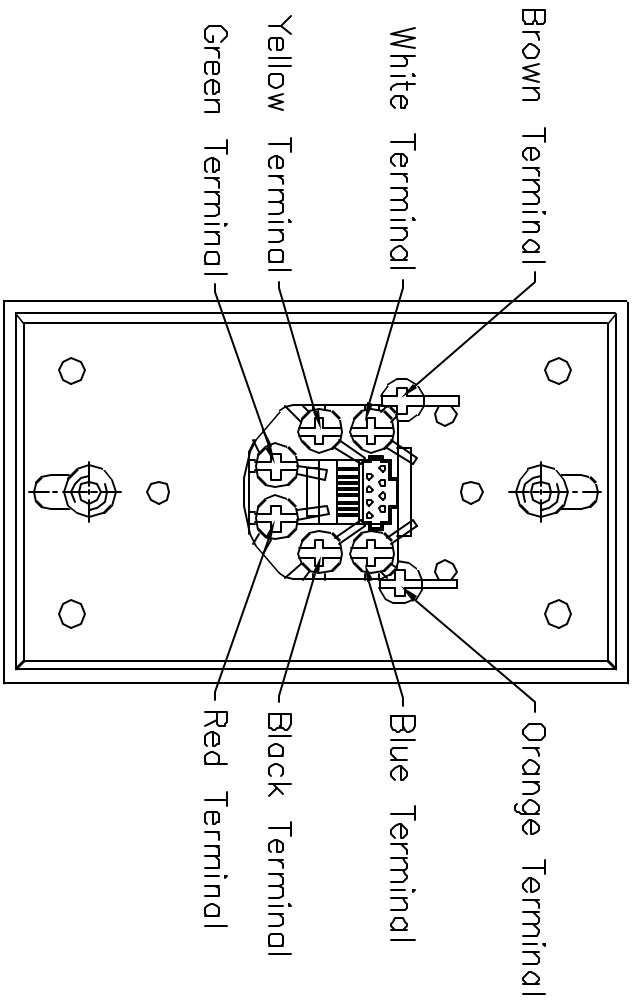
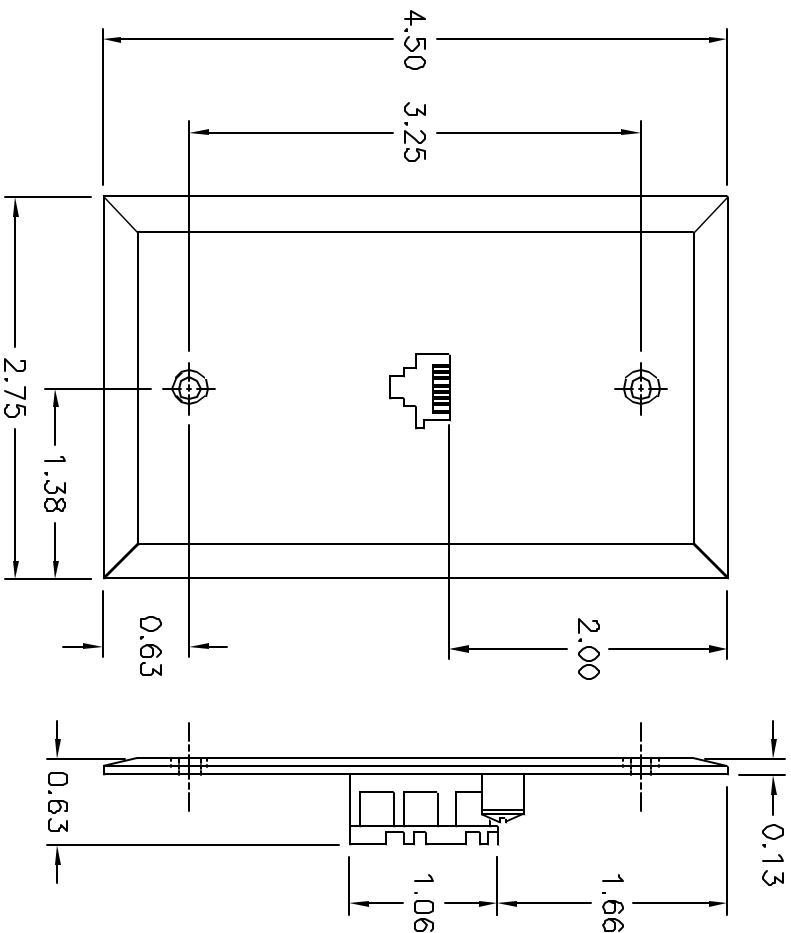


ALL RIGHTS RESERVED. NO PORTION OF THIS PUBLICATION, WHETHER IN WHOLE OR IN PART CAN BE REPRODUCED WITHOUT THE EXPRESS WRITTEN CONSENT OF SPC TECHNOLOGY.

| REVISIONS | | DOC. NO. SPC-F005 | Effective: 12/21/98 | DCP No: 860 | | | | |
|-----------|-----|-------------------|---------------------|-------------|--------|---------|--------|---------|
| DCP # | REV | DESCRIPTION | DRAWN | DATE | CHECKD | DATE | APPRVD | DATE |
| 1147 | A | RELEASED | HYO | 4/12/01 | JC | 5/19/01 | DJC | 5/19/01 |



- SPECIFICATIONS:**
1. CONNECTOR: KEYPED 8 POSITION / 8 CONDUCTOR
 2. LEADWIRE: 26 AWG, 7 STRAND
 3. LEADWIRE COLORS: BLACK, RED, GREEN, YELLOW, BROWN, WHITE, ORANGE, BLUE
 4. SPRING WIRE: .45mm (0.018 in) DIAMETER, PHOSPHOROUS BRONZE ALLOY
 5. HOUSING MATERIAL: ABS AND POLYCARBONATE
 6. COLOR: IVORY
 7. HARDWARE: (2) #8-32 MACHINE SCREWS

8. INSULATION RESISTANCE: > 500 MEGOHMS
9. DIELECTRIC STRENGTH: 500 V AC RMS, 60 Hz
10. CONTACT RESISTANCE: < 15 MILLIOHMS
11. CURRENT RATING: 1-1/2 AMPS
12. RETENTION FORCE: 76 N (17 lbs)
13. CRIMPING STRENGTH: 2.0 Kg (4.4 lbs)

DISCLAIMER
 ALL STATEMENTS AND TECHNICAL INFORMATION CONTAINED HEREIN ARE BASED UPON INFORMATION AND/OR TESTS WE BELIEVE TO BE ACCURATE AND RELIABLE. SINCE CONDITIONS OF USE ARE BEYOND OUR CONTROL, THE USER SHALL DETERMINE THE SUITABILITY OF THE PRODUCT FOR THE INTENDED USE AND ASSUME ALL RISK AND LIABILITY WHATSOEVER IN CONNECTION THEREWITH.



SPC TECHNOLOGY

UNLESS OTHERWISE

SPECIFIED,
 DIMENSIONS ARE
 FOR REFERENCE
 PURPOSES ONLY.

| | |
|--------------|---------|
| DRAWN BY: | DATE: |
| HISHAM ODISH | 4/12/01 |
| CHECKED BY: | DATE: |
| JOHN COLE | 5/18/01 |
| APPROVED BY: | DATE: |
| DANIEL CAREY | 5/18/01 |

DRAWING TITLE:

8 CONDUCTORS TELEPHONE WALL PLATE

| | | | |
|--------|-----------|-----------------|---------------|
| SIZE | DWG. NO. | ELECTRONIC FILE | REV |
| A | 8588-0212 | 52N9502.DWG | A |
| SCALE: | NTS | U.O.M.: INCHES | SHEET: 1 OF 1 |