



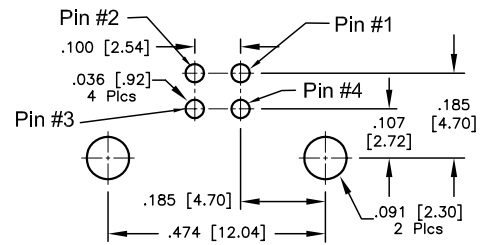
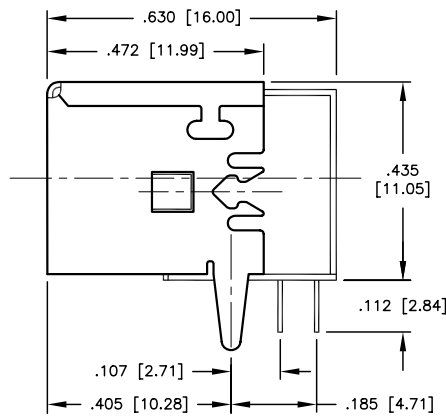
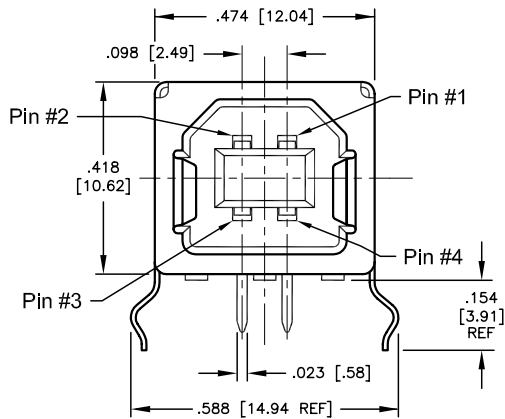
ALL RIGHTS RESERVED. NO PORTION OF THIS PUBLICATION, WHETHER IN WHOLE OR IN PART, CAN BE REPRODUCED WITHOUT THE EXPRESS WRITTEN CONSENT OF SPC TECHNOLOGY.

SPC-F005.DWG

#### REVISIONS

DOC. NO. SPC-F005 \* Effective: 7/8/02 \* DCP No: 1398

DCP #	REV	DESCRIPTION	DRAWN	DATE	CHECKD	DATE	APPRVD	DATE
809	A	RELEASED	JWM	2/24/00	HO	10/14/02	DJC	11/5/02
987	B	Added Pin numbers	JWM	6/24/03	HO	6/24/03	HO	6/24/03



SUGGESTED MOUNTING CONFIGURATION

## SPECIFICATIONS

### HOUSING:

THERMOPLASTIC, GLASS FIBER FILL, UL94V-0.  
COLOR: BLACK

### CONTACT:

PHOSPHOR BRONZE, GOLD PLATING ON CONTACT INTERFACE  
AND TIN-LEAD PLATING ON SOLDER TAIL, ALL OVER NICKEL  
UNDERPLATING.

### SHELL:

PHOSPHOR BRONZE, TIN-LEAD PLATING OVER NICKEL PLATING

### ELECTRICAL:

INSULATION RESISTANCE: 1000 Megohm (MIN)  
DIELECTRIC WITHSTAND VOLTAGE: 750 VAC  
VOLTAGE: 30 VAC (RMS)  
CURRENT: 1.0 AMP PER CONTACT  
CONTACT RESISTANCE: 30 milliohm (MAX)

### MECHANICAL:

MATING FORCE: 35 NEWTONS (MAX)  
UNMATING FORCE: 10 NEWTONS (MIN)

### ENVIRONMENTAL:

TEMPERATURE RANGE: -55°C TO +85°C

DISCLAIMER:  
ALL STATEMENTS AND TECHNICAL INFORMATION CONTAINED  
HEREIN ARE BASED UPON INFORMATION AND/OR TESTS WE  
BELIEVE TO BE ACCURATE AND RELIABLE. SINCE  
CONDITIONS OF USE ARE BEYOND OUR CONTROL, THE  
USER SHALL DETERMINE THE SUITABILITY OF THE PRODUCT  
FOR THE INTENDED USE AND ASSUME ALL RISK AND  
LIABILITY WHATSOEVER IN CONNECTION THEREWITH.

### TOLERANCES:

UNLESS OTHERWISE  
SPECIFIED,  
DIMENSIONS ARE  
FOR REFERENCE  
PURPOSES ONLY.

### DRAWN BY:

Jeff McVicker

### DATE:

2/24/00

### CHECKED BY:

Hisham Odish

### DATE:

10/14/02

### APPROVED BY:

Daniel Carey

### DATE:

11/5/02

### DRAWING TITLE:

USB Type B Female R/A PCB Mount Single, Open Back,

### SIZE DWG. NO.

A

SPC4936

### ELECTRONIC FILE

50N159.dwg

### REV

B

### SCALE: NTS

U.O.M.: INCHES [mm]

SHEET: 1 OF 1