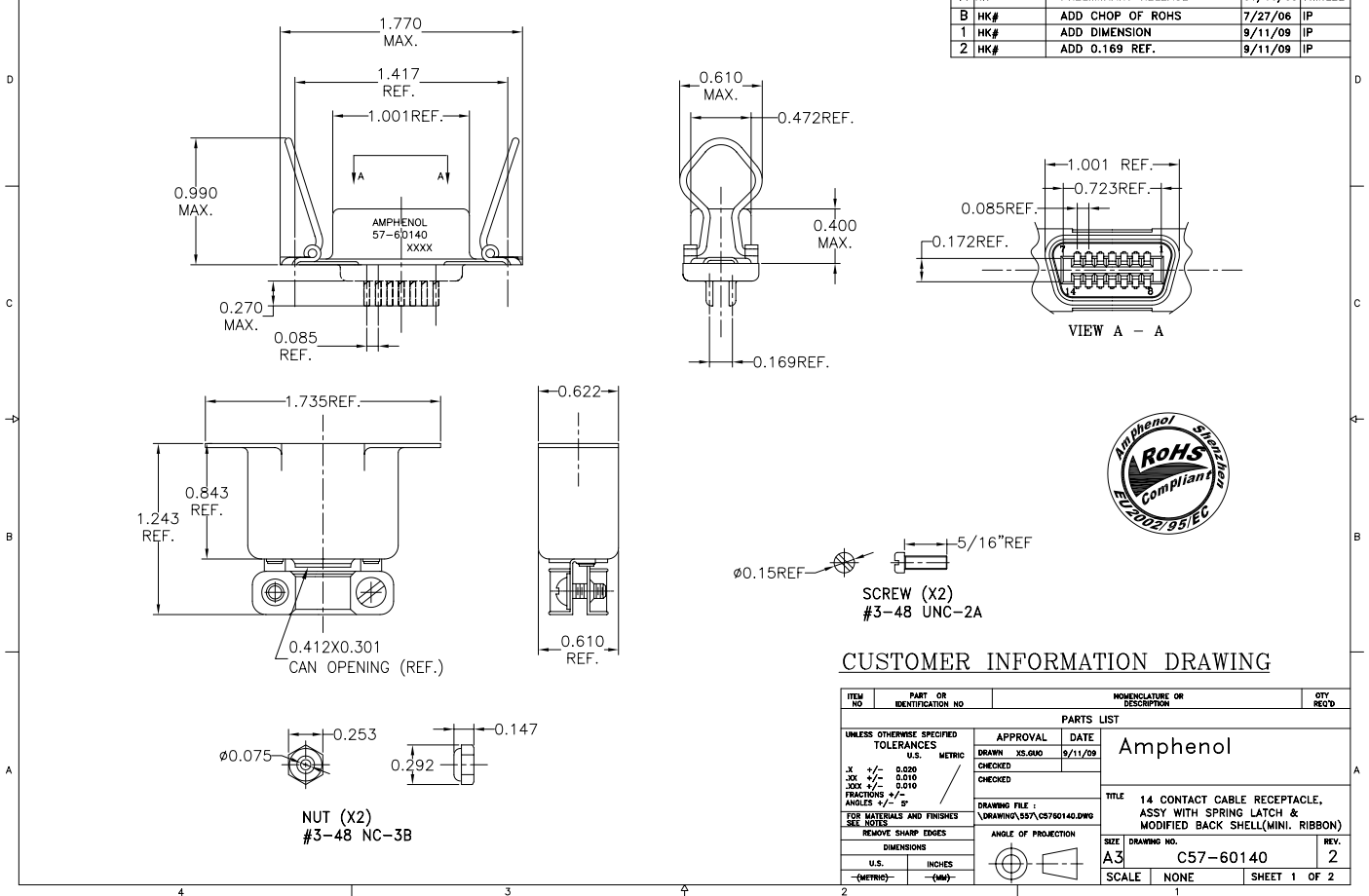


This document is the property of Amphenol Corporation and is loaned to the recipient for their use only. It is not to be distributed, reproduced, or used in any manner without the prior written consent of Amphenol Corporation. Amphenol Corporation reserves the right to modify or to use any information in this document.

REVISIONS				
SYM	ECN	DESCRIPTION	DATE	APPROVED
A	HK	PRELIMINARY RELEASE	01/16/03	Y.M.LEE
B	HK#	ADD CHOP OF ROHS	7/27/06	IP
1	HK#	ADD DIMENSION	9/11/09	IP
2	HK#	ADD 0.169 REF.	9/11/09	IP

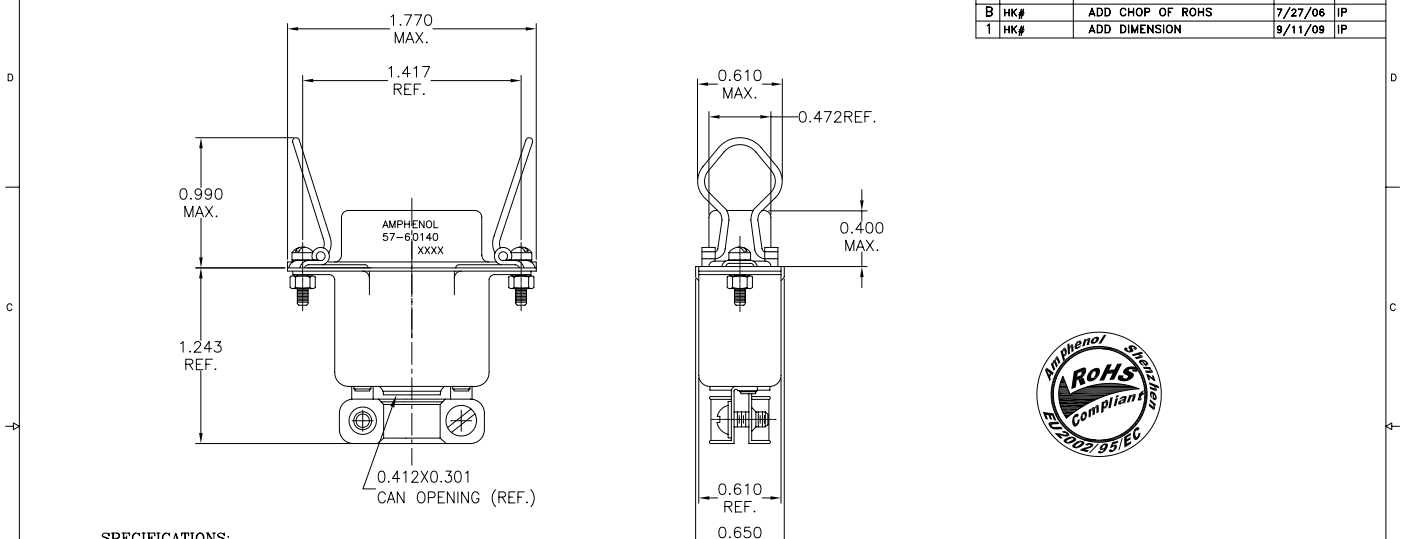


CUSTOMER INFORMATION DRAWING

ITEM NO.	PART OR IDENTIFICATION NO.	MONUMENT OR DESCRIPTION	QTY REQ'D
PARTS LIST			
UNLESS OTHERWISE SPECIFIED TOLERANCES		APPROVAL	DATE
U.S. METRIC		DRAWN XS.GAO	9/11/09
X +/- 0.020		CHECKED	
.XX +/- 0.010		CHECKED	
.XXX +/- 0.010		CHECKED	
FRACTIONS +/-			
ANGLES +/-			
SEE NOTES		DRAWING FILE I	
FOR MATERIALS AND FINISHES REMOVE SHARP EDGES		Y:\DRAWING\0579\C5760140.DWG	
DIMENSIONS		ANGLE OF PROJECTION	
U.S. INCHES			
-(METRIC)-			
TITLE			REV.
14 CONTACT CABLE RECEPTACLE, ASSY WITH SPRING LATCH & MODIFIED BACK SHELL(MINI, RIBBON)			2
SIZE DRAWING NO.			
A3 C57-60140			
SCALE NONE			SHEET 1 OF 2

This document is the property of Amphenol Corporation and is loaned to the recipient for their use only. It is not to be distributed, reproduced, or used in any manner without the prior written consent of Amphenol Corporation. Amphenol Corporation reserves the right to modify or to use any information in this document.

REVISIONS				
SYM	ECN	DESCRIPTION	DATE	APPROVED
A	HK	PRELIMINARY RELEASE	01/16/03	Y.M.LEE
B	HK#	ADD CHOP OF ROHS	7/27/06	IP
1	HK#	ADD DIMENSION	9/11/09	IP



SPECIFICATIONS:

- 1) SOLDER CUP CONTACT: TO ACCOMMODATE 22-30 AWG SOLID AND 24-30 STRANDED CONNECTOR WIRES.
- 2) DIELECTRIC: DIALYL-PHTHALATE PER MIL-M-14F TYPE MDG UL-94V0
- 3) CONTACT MATERIAL: COPPER ALLOY
- 4) CONTACT: 20 MICRO-INCHES MIN. GOLD MATING AREA; GOLD FLASH ON TAIL AREA. 50 MICRO-INCHES MIN. NICKEL UNDERPLATING ALL OVER.
- 5) SHELL MATERIAL: ZINC PLATED STEEL WITH CLEAR CHROMATE COATING
- 6) CURRENT CAPACITY: 5 AMPS/CONTACT
- 7) VOLTAGE RATING: 700 VOLTS D.C. AT SEA LEVEL. 200 VOLTS D.C. AT 70,000 FEET
- 8) INSULATION RESISTANCE: >5000 M OHM
- 9) DIELECTRIC WITHSTANDING VOLTAGE: 1200 VAC (RMS) AT SEA LEVEL
- 10) CONNECTOR MATING FORCE: REFER TO TABLE 1.

- 11) CONTACT RETENTION FORCE: 2 LBS MIN.
- 12) DURABILITY: 250 CYCLES MIN.
- 13) VIBRATION: NO INTERRUPTIONS < 1u SEC.
- 14) OPERATING TEMPERATURE: -55°C TO +105°C (-67°F TO +221°F)

CUSTOMER INFORMATION DRAWING

ITEM NO.	PART OR IDENTIFICATION NO.	MONUMENT OR DESCRIPTION	QTY REQ'D
PARTS LIST			
UNLESS OTHERWISE SPECIFIED TOLERANCES		APPROVAL	DATE
U.S. METRIC		DRAWN XS.GAO	9/11/09
X +/- 0.020		CHECKED	
.XX +/- 0.010		CHECKED	
.XXX +/- 0.010		CHECKED	
FRACTIONS +/-			
ANGLES +/-			
SEE NOTES		DRAWING FILE I	
FOR MATERIALS AND FINISHES REMOVE SHARP EDGES		Y:\DRAWING\0579\C5760140.DWG	
DIMENSIONS		ANGLE OF PROJECTION	
U.S. INCHES			
-(METRIC)-			
TITLE			REV.
14 CONTACT CABLE RECEPTACLE, ASSY WITH SPRING LATCH & MODIFIED BACK SHELL(MINI, RIBBON)			2
SIZE DRAWING NO.			
A3 C57-60140			
SCALE NONE			SHEET 2 OF 2