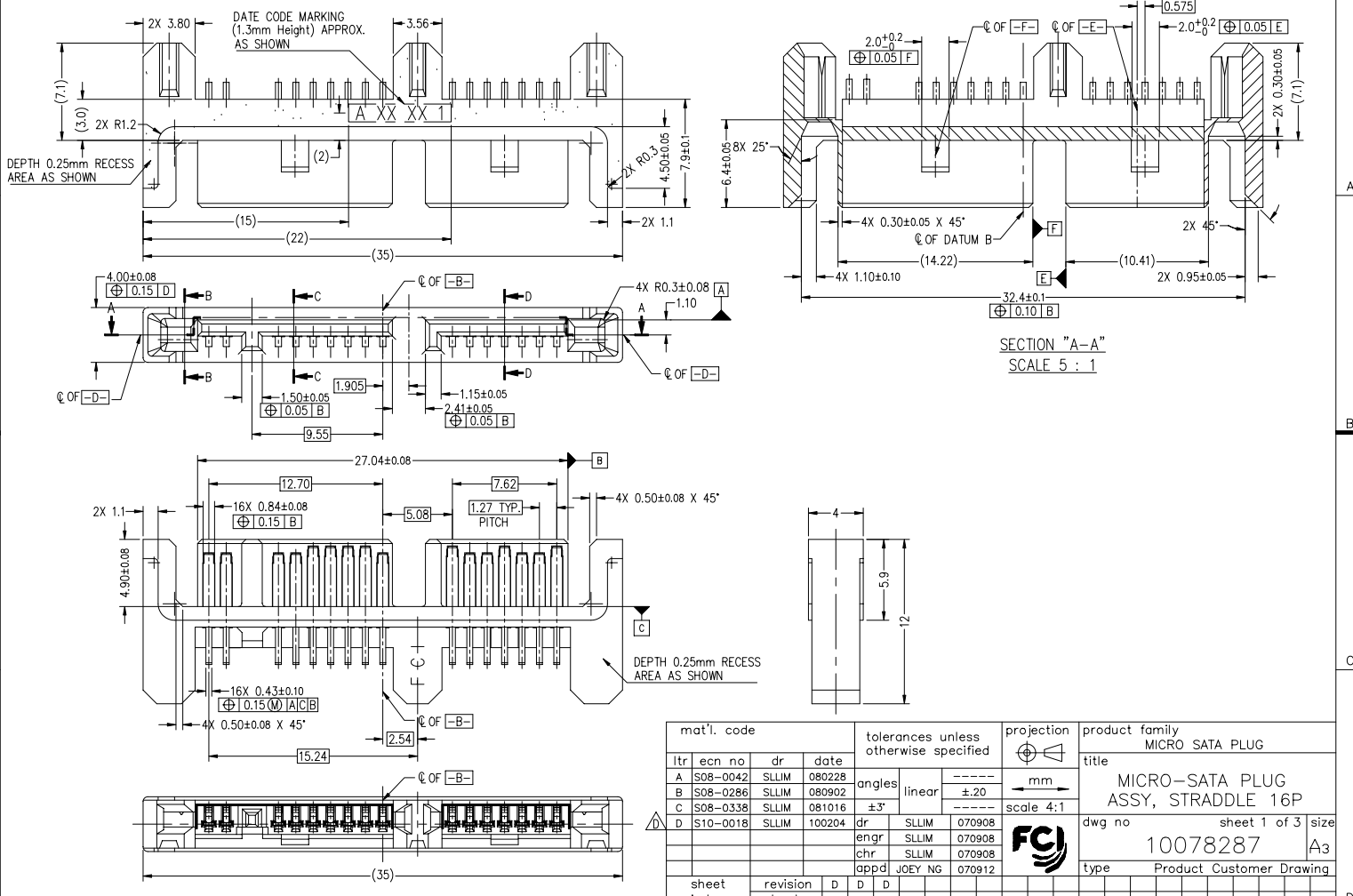


PRODUCT P/N: 10078287-001LF
10078287-002LF

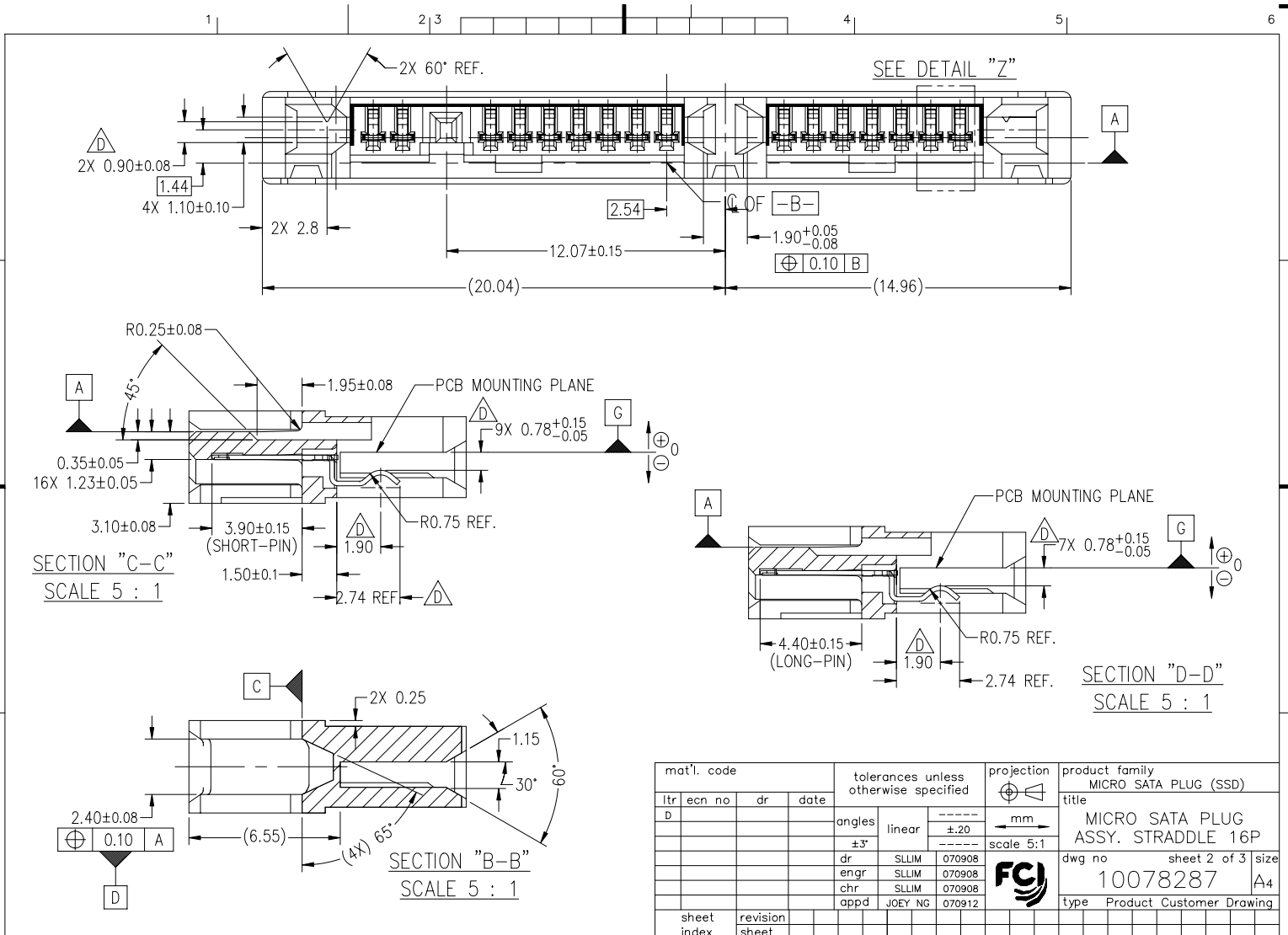


SECTION "A-A"
SCALE 5 : 1

| mat'l. code | | | | tolerances unless otherwise specified | | | projection | product family |
|----------------|----------|-------|--------|---------------------------------------|--------|-----|-----------------|----------------|
| ltr | ecn no | dr | date | angles | linear | mm | MICRO SATA PLUG | |
| A | S08-0042 | SLLIM | 080228 | ±.20 | --- | 4:1 | | |
| B | S08-0286 | SLLIM | 080902 | ±3° | --- | | | |
| C | S08-0338 | SLLIM | 081016 | --- | --- | | | |
| D | S10-0018 | SLLIM | 100204 | --- | --- | | | |
| sheet index | | | | dr | engr | chr | appd | |
| revision sheet | | | | D | D | D | D | |
| | | | | 1 | 2 | 3 | | |

| title | | product family | |
|------------------------------------|----------|-----------------|---------|
| MICRO-SATA PLUG ASSY, STRADDLE 16P | | MICRO SATA PLUG | |
| dwg no | 10078287 | sheet 1 of 3 | size A3 |
| type Product Customer Drawing | | | |

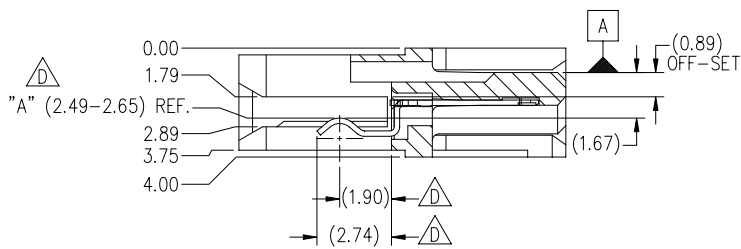
PDM: Rev:D STATUS: Released Printed: Jul 21, 2010



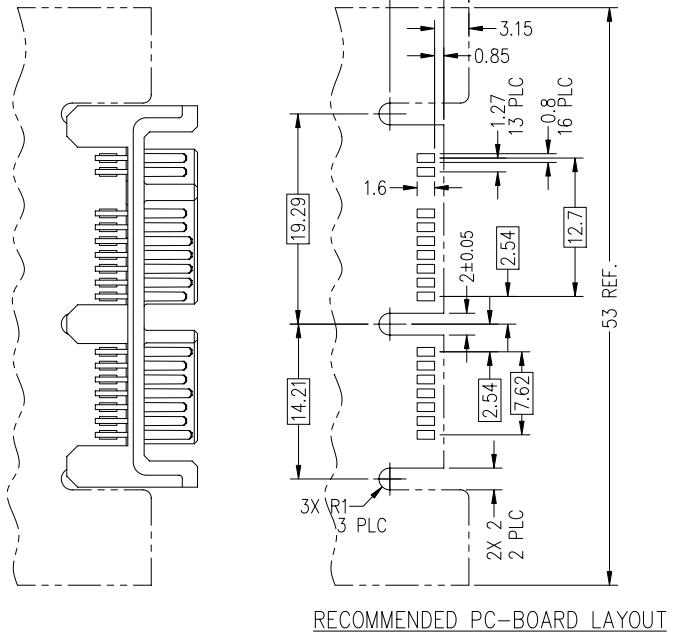
| | | | | | | |
|-------------|----------------|---------------------------------------|------|--------|------------|--------------------------|
| mat'l. code | | tolerances unless otherwise specified | | | projection | product family |
| ltr | ecn no | dr | date | angles | | MICRO SATA PLUG (SSD) |
| D | | | | linear | | mm |
| | | | | ±3° | ±.20 | title |
| | | | | dr | ----- | MICRO SATA PLUG |
| | | | | enr | ----- | ASSY. STRADDLE 16P |
| | | | | chr | ----- | dwg no |
| | | | | appd | ----- | 10078287 |
| | | | | | ----- | sheet 2 of 3 |
| | | | | | ----- | size |
| | | | | | ----- | A4 |
| sheet index | revision sheet | | | | | type |
| | | | | | | Product Customer Drawing |

PDM: Rev:D STATUS Released Printed: Jul 21, 2010

| PRODUCT NO. | DIM. "A" | PC-BOARD THICKNESS |
|----------------|---------------|--------------------|
| 10078287-001LF | 2.49mm-2.65mm | 1.00±0.05mm |
| 10078287-002LF | 2.49mm-2.65mm | 1.00±0.05mm |



- MATERIALS:**
HOUSING MATERIAL: HIGH TEMPERATURE THERMOPLASTIC, UL94V-0, COLOR; BLACK.
CONTACT PIN: COPPER ALLOY (BRASS).
- FINISH:**
10078287-001LF
A. SATA SIGNAL & POWER PINS: (MATING SIDE).
1.27µm [50u"] MINIMUM, 2.54µm [100u"] MAXIMUM NICKEL UNDER PLATE WITH 0.13µm [5u"] MINIMUM GOLD IN CONTACT AREA.
10078287-002LF
B. SATA SIGNAL & POWER PINS: (MATING SIDE).
1.27µm [50u"] MINIMUM, 2.54µm [100u"] MAXIMUM NICKEL UNDER PLATE WITH 0.76µm [30u"] MINIMUM GOLD IN CONTACT AREA.
C. ALL SOLDER TAILS:
1.91µm [75u"] MINIMUM LEAD-FREE (100%) TIN, PLATING COVERAGE: 95% MINIMUM FOR UNDER AND OVERPLATE.
- A \triangle SYMBOL WILL BE NEXT TO ANY DIMENSION, VIEW, OR NOTE WHICH HAS BEEN MODIFIED WITH THE CURRENT DRAWING REVISION.
- THIS PRODUCT MEETS EUROPEAN UNION DIRECTIVES AND OTHER COUNTRY REGULATIONS AS DESCRIBED IN GS-22-008.
- THE HOUSING WILL WITHSTAND EXPOSURE TO 260°C TEMPERATURE FOR 10 SECONDS IN A CONVECTION, INFRA-RED OR VAPOR PHASE REFLOW OVEN.



RECOMMENDED PC-BOARD LAYOUT

| mat'l. code | | | | tolerances unless otherwise specified | | | projection | product family |
|-------------|----------------|----|------|---------------------------------------|---------|--------|--------------------------|----------------|
| ltr | ecn no | dr | date | angles | linear | mm | MICRO SATA PLUG (SSD) | |
| D | | | | ±3' | ±.20 | mm | title | |
| | | | | dr | SLLIM | 070908 | MICRO SATA PLUG | |
| | | | | enrg | SLLIM | 070908 | ASSY. STRADDLE 16P | |
| | | | | chr | SLLIM | 070908 | dwg no | |
| | | | | appd | JOEY NG | 070912 | 10078287 | |
| | | | | | | | sheet 3 of 3 | |
| sheet index | revision sheet | | | | | | size | |
| | | | | | | | A4 | |
| | | | | | | | type | |
| | | | | | | | Product Customer Drawing | |

PDM: Rev:D

STATUS Released

Printed: Jul 21, 2010