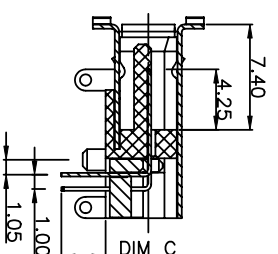
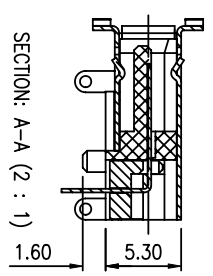
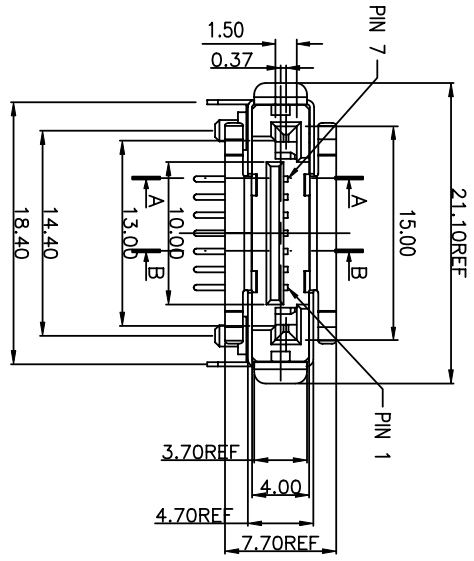
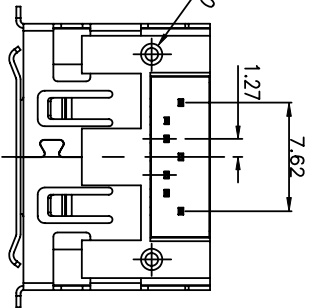
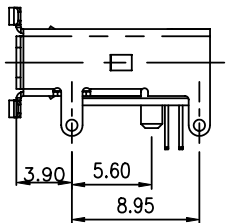
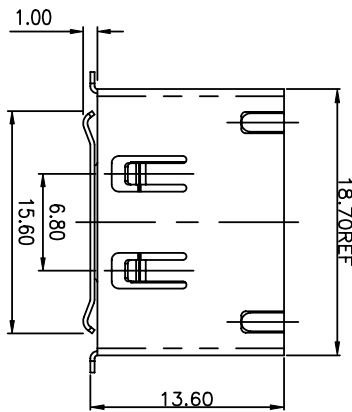
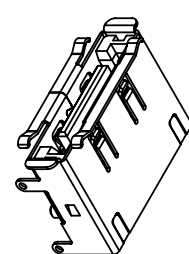
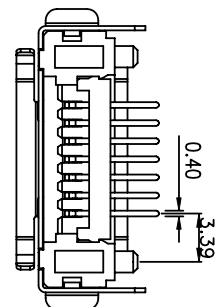


B

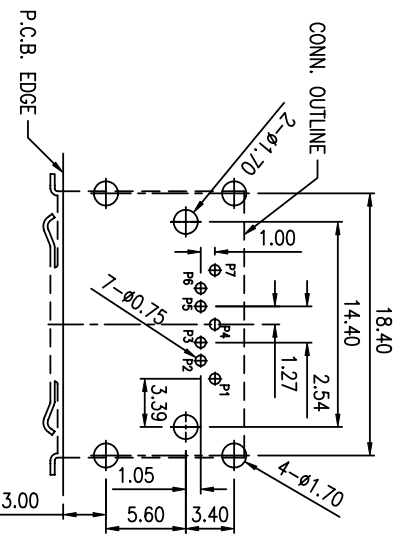
A

1 | 2

1 | 2



- NOTES:
 1. MATERIAL: HOUSING: HIGH TEMP. THERMAL PLASTIC WITH 30% G/F UL94 V-0
 COLOR: SEE ORDERING INFO.
 CONTACT: BRASS
 SHELL: BRASS
 2. FINISH: CONTACT: GOLD PLATING ON CONTACT AREA
 100µ" MIN. TIN PLATING ON SOLDER TAILS
 50µ" MIN. NICKEL UNDERPLATING OVER ALL
 SHELL: 50µ" MIN. NICKEL UNDERPLATING OVER ALL
3. PRODUCT SPEC : GS-12-386
 PACKING SPEC : GS-14-1109
 4. ORDERING INFORMATION:
 10067172 - X 0 X LF
- Au PLATING
 5: 15µ"
 6: 30µ"
 7: G/F
- LF: LEAD FREE
 COLOR/MATERIAL/TAIL LENGTH
 0=Black/LCP / DIM C=3.1 MM
 1=Black/LCP / DIM C=2.1 MM
 2=Black/LCP / DIM C=2.1 MM



mat'l. code		tolerances unless otherwise specified		CUSTOMER COPY		FCI		title	
ltr	ecn no.	dr	date	linear	projection	MM	product family	size	dwg no
A	106-0135	S.Lin	08/31/06	.XX ± 0.25	MM	→	SATA	A4	10067172
B	107-1048	S.Lin	04/23/07	.XXX ± 0.15	MM	→	SATA	A4	10067172
C	108-1088	S.Lin	05/09/08	0° ± 2°	MM	→	SATA	A4	10067172
sheet index		revision	sheet	index	revision	sheet	index	revision	sheet
1		C	1	1	C	1	1	C	1

ACAD

3

3

code code

4

B