

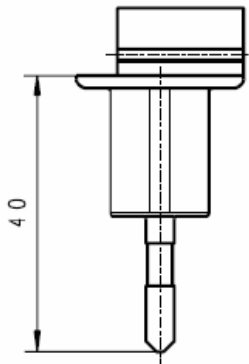
Primäradapter MPP 15

LIEFERVORSCHRIFT SPECIFICATION



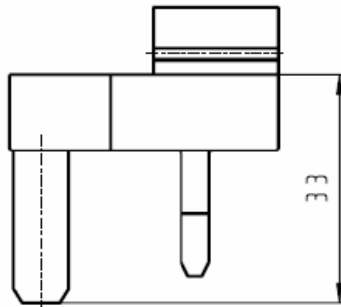
1.) Lieferbare Stecker (Max. Strombelastbarkeit der Stecker 2,5A)
Available plugs (Max. current-carrying capacity of the plugs 2,5A)

Euro-Stecker/plug 1717707



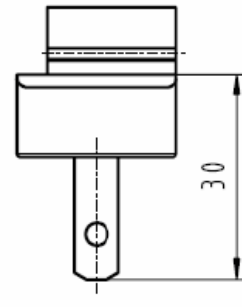
Stecker gekennzeichnet: "11.8593/EU"
Plug marked: "11.8593/EU"

UK-Stecker/plug 1717618



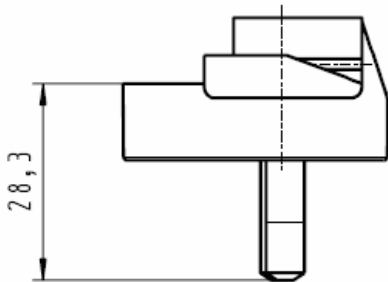
Stecker gekennzeichnet: "11.8593/UK"
Plug marked: "11.8593/UK"

USA-Stecker/plug 1717715



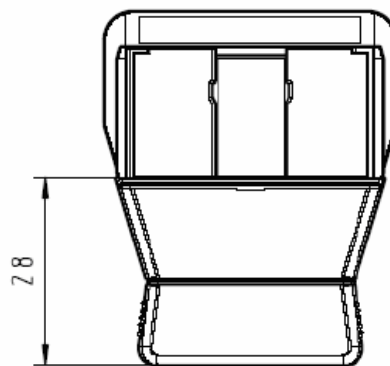
Stecker gekennzeichnet: "11.8593/US"
Plug marked: "11.8593/US"

Australien-Stecker/plug 1800496



Stecker gekennzeichnet: "11.8593/AUS"
Plug marked: "11.8593/AUS"

ROW-Stecker/plug 1809281



Ansicht/view A M1:2



Buchse nach/socket to:
DIN EN 60 320 Teil/part 1
Version: C8

Stecker gekennzeichnet:/
plug marked:
"11.8593/C8"