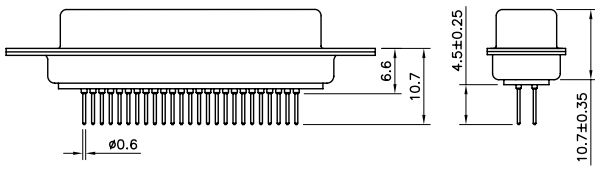
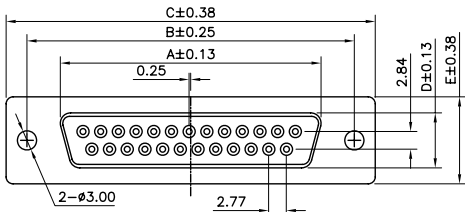
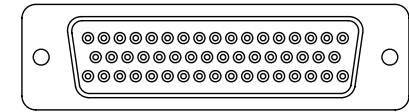
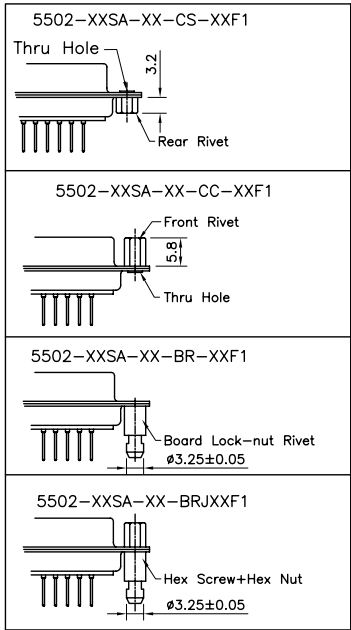
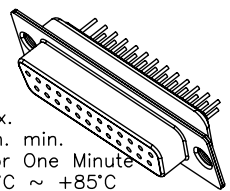


1 2 3 4 5

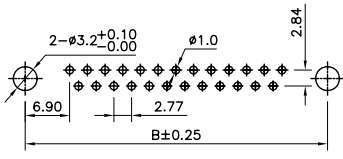


Specifications:
 Current Rating:3.0A AC/DC
 Voltage Rating:250V AC/DC
 Contact Resistance:30m ohm. max.
 Insulation Resistance: 5,000M ohm. min.
 Withstanding Voltage:1,000V AC For One Minute
 Operating Temperature Range:-40°C ~ +85°C
 Material and Finish
 Insulator:High Temp. Plastic (PBT UL 94V-0)
 Contact:Copper Alloy Nickel Undercoated
 ,Selective Gold plated
 Shell:Metal Iron With Tin plated
 How To Order
 5502-XXSA-XX-XX-XXF1

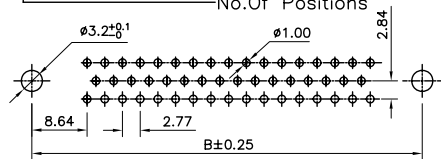


- Lead Free
- Blank:White(Standard Color)
- BK:Black; BU:Blue
- Blank:Standard type
- CS:Rear Rivet
- CC:Front Rivet
- BR:Board Lock-nut Rivet
- BRJ:Hex Screw+Hex Nut
- 01:Gold Plated
- 02:Selective Gold
- SA:Stamp Pin Female
- No.Of Positions

Pos	A	B	C	D	E
9	16.33	24.99	30.81	7.90	12.50
15	24.66	33.32	39.14	7.90	12.50
25	38.38	47.04	53.04	7.90	12.50
37	54.84	63.50	69.32	7.90	12.50
50	52.43	61.11	66.93	10.74	15.37



P.C. Board Layout
(9,15,25,37 Positions)



P.C. Board Layout
(50 Positins)

RoHS Compliant

F				
E				
D				
C	09-Oct-2006	ECN-CN061002	Wendy	
B	13-May-2006	ECN-CN060507	Wendy	
A	11-Aug-2005	(PC0052)	Cel King	
REV	DATE	FILE	BY	

DRAWN: Cel King	GENERAL TOLERANCE: .X=±0.2 .XX=±0.15
CHECKED: Jeremy Liu	UNIT: MM
APPROVAL: Mike Wu	SCALE: 1:1
	SHEET: 1 / 1
	PROJECTION:

繼德工業股份有限公司 Neltron Industrial Co., Ltd.	
DESCRIPTION: D-SUB Standard Dip PCB Stamp Pin Female	SIZE
PART NO: 5502-XXSA-XX-XX-XXF1	A4

A

B

C

D