

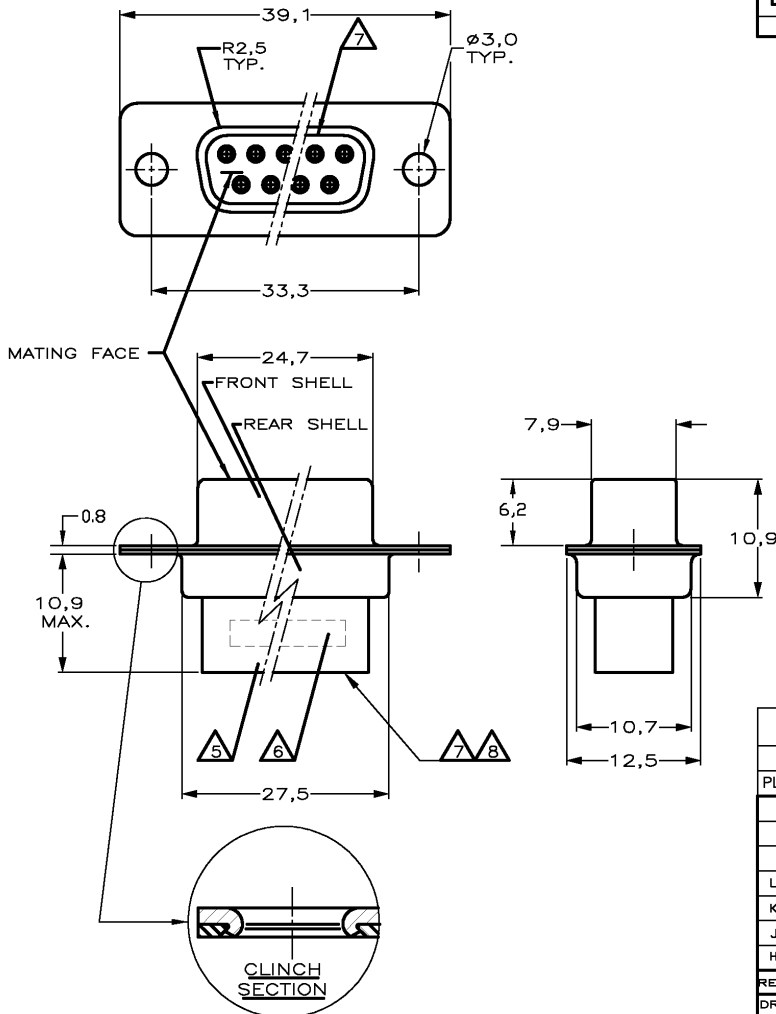
**DO NOT SCALE**  
DIMENSIONS IN mm

**METRIC**



NOTES:

- 1 THIS RECEPTACLE ACCEPTS SIZE 20 REC. CONTACTS.
  - 2 MAXIMUM WIRE INSULATION RECOMMENDED FOR USE WITH THIS RECEPTACLE IS 1,73 DIA. MAX..
  - 3 RETENTION TINES ARE AN INTEGRAL PART OF INSERT.
  - 4 FOLLOWING INSERTION/REMOVAL TOOLS ARE RECOMMENDED FOR USE WITH THESE CONNECTORS:  
 32-28AWG/28-24AWG CONTACTS  
 91067-3 INSERTION/REMOVAL  
 726363-1 INSERTION ONLY  
 24-20AWG CONTACTS  
 726363-1 INSERTION ONLY  
 726364-1 REMOVAL ONLY
- ⚠️ INSERTS: GLASSFILLED SELF-EXTINGUISHING PBT, COLOR BLACK.  
 ⚠️ AMP DATE CODE, AMP PART NUMBER, INK STAMPED.  
 ⚠️ RAISED CAVITY IDENTIFICATION 0,8 HIGH.  
 ⚠️ RAISED CAVITY IDENTIFICATION NUMBERS ON WIRE SIDE ARE WHITENED FOR 164532-9.



BRIGHT TIN	BRIGHT TIN	STEEL	164532-9	⚠️
BRIGHT TIN	BRIGHT TIN	STEEL	164532-4	
PLATING FRONT SHELL	PLATING REAR SHELL	MATERIAL SHELLS	PARTNUMBER	
<b>CUSTOMER DRAWING</b> FOR REFERENCE ONLY WILL NOT BE UPDATED © COPYRIGHT 19 - BY AMP HOLLAND B.V. ALL INTERNATIONAL RIGHTS RESERVED. AMP PRODUCTS MAY BE COVERED BY U.S. AND FOREIGN AND/OR PATENTS PENDING. THIS DRAWING IS UNPUBLISHED RELEASED FOR PUBLICATION				
L	SR10-0547-02	KV	24 OCT 02	
K	SR10-0382-02	KV	23 AUG 02	
J	SR10-0247-02	KV	23 MAY 02	
H	EH-0314-99	D.K.	11 FEB 99	
REV.	REVISION RECORD	DR.	CHK.	
DR.:	DJESSLER	CHK.:	W.SOOMERS	APP.:
DATE:	11 FEB 99	DATE:	-	DATE:
DWG.No.	C 164532	REV.LTR.	L	SHEET
				1 OF 1
				<b>A3</b>

8 | 7 | 6 | 5 | 4 | 3 | 2 | 1