



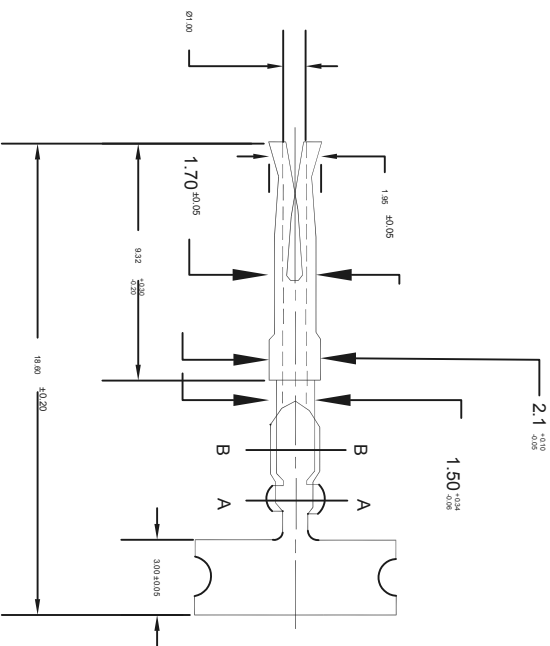
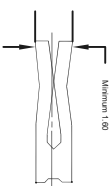
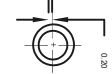
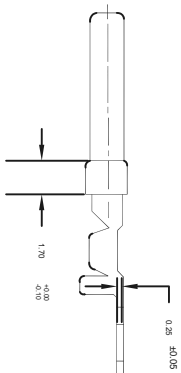
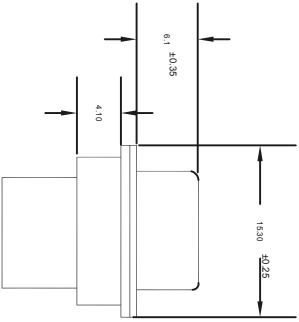
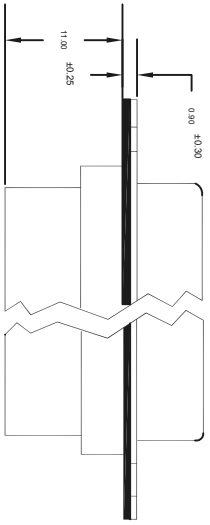
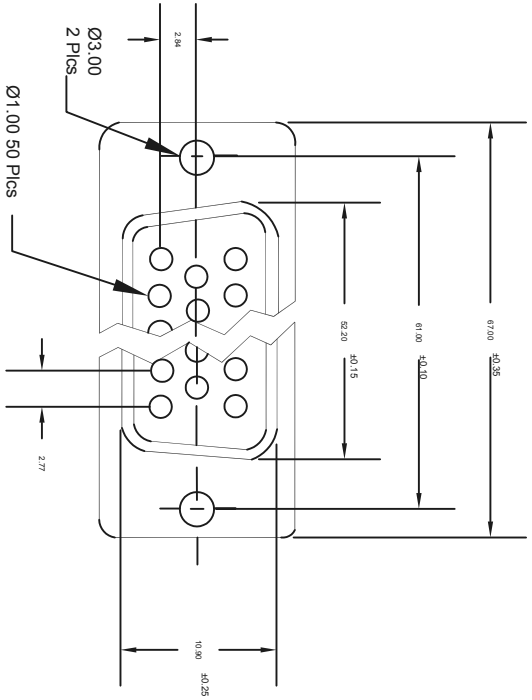
SPC
TECHNOLOGY

ALL RIGHTS RESERVED. NO PORTION OF THIS PUBLICATION, WHETHER IN WHOLE OR IN PART CAN BE REPRODUCED WITHOUT THE EXPRESS WRITTEN CONSENT OF SPC TECHNOLOGY.
SPC-F005.DWG

REVISIONS

DCP #	REV	DESCRIPTION	DRAWN	DATE	CHECKD	DATE	APPRVD	DATE
			VEE	23-08-10	JAG	26-08-10	XXX	06-09-10

DOC. NO. SPC-F005 * Effective: 7/8/02 * DCP No: 1398



Dimensions : Inches

DISCLAIMER:
ALL STATEMENTS AND TECHNICAL INFORMATION CONTAINED HEREIN ARE BASED UPON INFORMATION AND/OR TESTS WE BELIEVE TO BE ACCURATE AND RELIABLE. SINCE CONDITIONS OF USE ARE BEYOND OUR CONTROL, THE USER SHALL DETERMINE THE SUITABILITY OF THE PRODUCT FOR THE INTENDED USE AND ASSUME ALL RISK AND LIABILITY WHATSOEVER IN CONNECTION THEREWITH.

TOLERANCES:

UNLESS OTHERWISE SPECIFIED, DIMENSIONS ARE FOR REFERENCE PURPOSES ONLY.

DRAWN BY:

VEE

DATE:

23-08-10

DRAWING TITLE:

50 Pin Female Crimp Type D-Sub Connector

SIZE

XXX

DWG. NO.

XXX

ELECTRONIC FILE

92N3439

REV

A

CHECKED BY:

JAG

DATE:

26-08-10

APPROVED BY:

XXX

SCALE:

NTS

U.O.M.: INCHES [mm]

SHEET:

1 OF 1

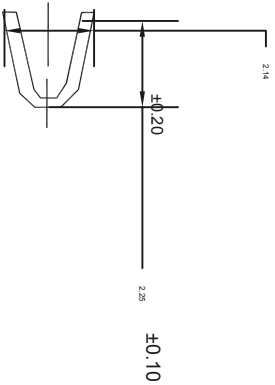


SPC
TECHNOLOGY

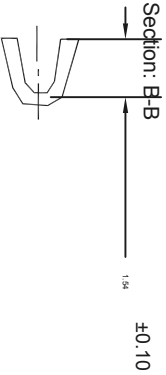
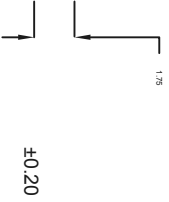
ALL RIGHTS RESERVED. NO PORTION OF THIS PUBLICATION, WHETHER IN WHOLE OR IN PART CAN BE REPRODUCED WITHOUT THE EXPRESS WRITTEN CONSENT OF SPC TECHNOLOGY.

SPC-F005.DWG

REVISIONS		DOC. NO.	SPC-F005	*	Effective:	7/8/02	*	DCP No:	1398
DCP #	REV	DESCRIPTION	DRAWN	DATE	CHECKD	DATE	APPRVD	DATE	
			VEE	23-08-10	JAG	26-08-10	XXX	06-09-10	



Section:
A-A



Dimensions : Inches

- Specification:**
1. Shell: Steel, zinc yellow chromated
 2. Insulator: UL94V-0 rated, black PBT + 30% fibre glass nylon-66
 3. Current rating: 5 Amps
 4. Contact resistance: 15 milliohms maximum
 5. Insulator resistance: 1000 megohms minimum
 6. Voltage: 500V AC for 1 minute
 7. Temperature: -50°C to +100°C
 8. Pin: Brass, stamped, gold plated on contact area tin lead on solder cup

Part Number Table

Description	Part Number
50 Pin Female Crimp Type D-Sub Connector	SPC21095

TOLERANCES: UNLESS OTHERWISE SPECIFIED, DIMENSIONS ARE FOR REFERENCE PURPOSES ONLY.

DISCLAIMER: ALL STATEMENTS AND TECHNICAL INFORMATION CONTAINED HEREIN ARE BASED UPON INFORMATION AND/OR TESTS WE BELIEVE TO BE ACCURATE AND RELIABLE. SINCE CONDITIONS OF USE ARE BEYOND OUR CONTROL, THE USER SHALL DETERMINE THE SUITABILITY OF THE PRODUCT FOR THE INTENDED USE AND ASSUME ALL RISK AND LIABILITY WHATSOEVER IN CONNECTION THEREWITH.

DRAWN BY:	VEE	DATE:	23-08-10	DRAWING TITLE:	50 Pin Female Crimp Type D-Sub Connector		
CHECKED BY:	JAG	DATE:	26-08-10	SIZE	DWG. NO.	XXX	ELECTRONIC FILE
APPROVED BY:	XXX	DATE:	06-09-10	SCALE:	NTS	U.O.M.: INCHES [mm]	SHEET: 1 OF 1
							92N3439
							REV A