



ALL RIGHTS RESERVED. NO PORTION OF THIS PUBLICATION, WHETHER IN WHOLE OR IN PART, CAN BE REPRODUCED WITHOUT THE EXPRESS WRITTEN CONSENT OF SPC TECHNOLOGY.

SPC-F005.DWG

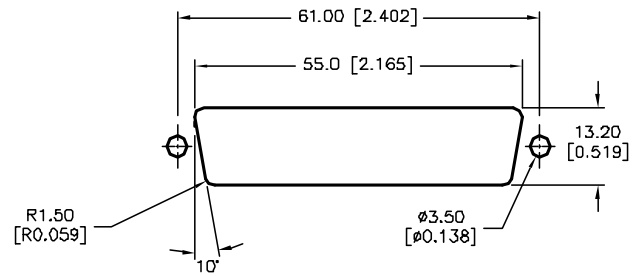
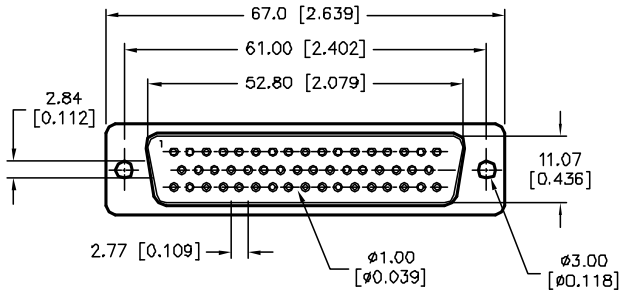
#### REVISIONS

| DCP # | REV | DESCRIPTION          | DRAWN | DATE     | CHECKD | DATE    | APPRVD | DATE    |
|-------|-----|----------------------|-------|----------|--------|---------|--------|---------|
| 1876  | A   | RELEASED             | EO    | 07/25/06 | JN     | 2/13/08 | JN     | 2/13/08 |
| 1959  | B   | Shell Plate was Zinc | JN    | 2/13/08  | JN     | 2/13/08 | JN     | 2/13/08 |

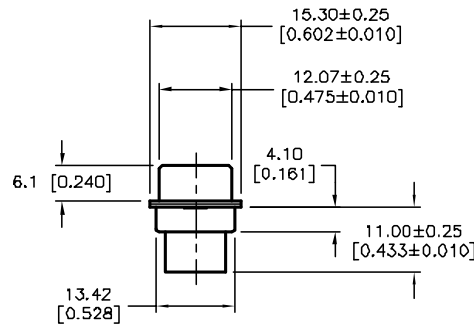
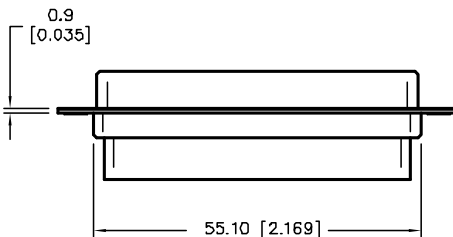
DOC. NO. SPC-F005 \* Effective: 7/8/02 \* DCP No: 1308



RoHS  
Compliant



#### PANEL CUTOUT



#### SPECIFICATIONS:

Shell: Steel, Tin-Plate  
Insulator: UL 94V-0 Rated, Black  
1. PBT+30% Fiber Glass  
2. Nylon-66  
Current Rating: 5 Amps  
Contact Resistance: 15 milliohms Max  
Insulator Resistance: 1000 Megohms Min  
Voltage: 500 VAC for 1 Minute  
Temperature: -50°C to +100°C

DISCLAIMER:  
ALL STATEMENTS AND TECHNICAL INFORMATION CONTAINED HEREIN ARE BASED UPON INFORMATION AND/OR TESTS WE BELIEVE TO BE ACCURATE AND RELIABLE. SINCE CONDITIONS OF USE ARE BEYOND OUR CONTROL, THE USER SHALL DETERMINE THE SUITABILITY OF THE PRODUCT FOR THE INTENDED USE AND ASSUME ALL RISK AND LIABILITY WHATSOEVER IN CONNECTION THEREWITH.

#### TOLERANCES:

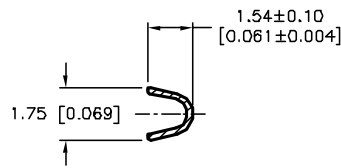
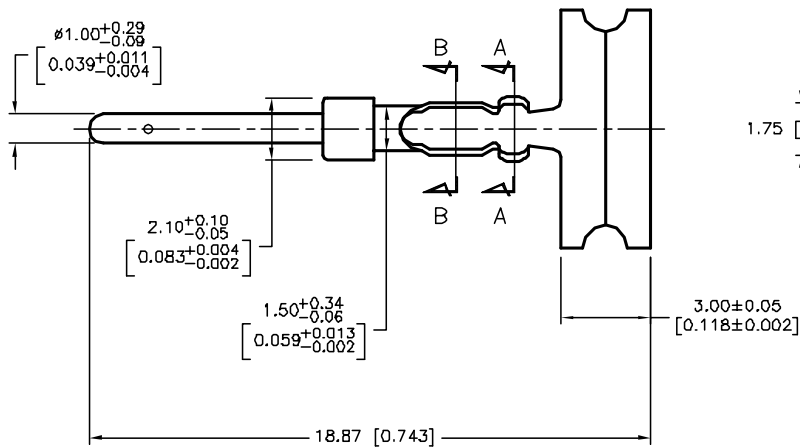
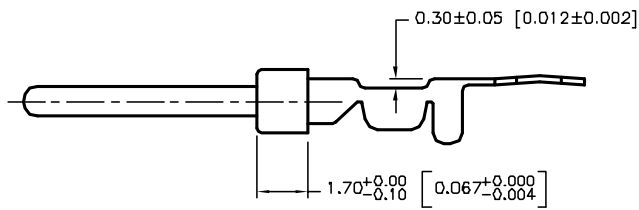
Unless Otherwise Specified  
.X ±0.35 [0.014]  
.XX ±0.15 [0.006]

|              |          |
|--------------|----------|
| DRAWN BY:    | DATE:    |
| EKLAS ODISH  | 07/25/06 |
| CHECKED BY:  | DATE:    |
| Jason Nash   | 2/13/08  |
| APPROVED BY: | DATE:    |
| Jason Nash   | 2/13/08  |

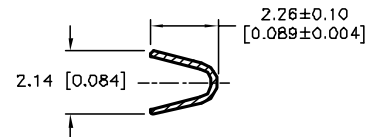
#### DRAWING TITLE:

50 Pin Crimp Type D-Sub Plug

| SIZE   | DWG. NO. | ELECTRONIC FILE     | REV           |
|--------|----------|---------------------|---------------|
| A      | SPC15200 | 79K4802.DWG         | B             |
| SCALE: | NTS      | U.O.M.: mm [INCHES] | SHEET: 1 OF 2 |



**SECTION: B-B**



**SECTION: A-A**

**SPECIFICATIONS:**

Contact: Brass, Stamped Gold-Plated  
on Contact Area  
Nickel-Plated on Crimp-Area

ALL RIGHTS RESERVED. NO PORTION OF THIS PUBLICATION, WHETHER IN WHOLE OR IN PART CAN BE REPRODUCED WITHOUT THE EXPRESS WRITTEN CONSENT OF SPC TECHNOLOGY.

SPC-F005.DWG

DOC. NO. SPC-F005 \* Effective: 7/8/02 \* DCP No: 1388

SIZE  
**A**

DWG. NO.

**SPC15200**

ELECTRONIC FILE

**79K4802.DWG**

REV  
**B**

SCALE: NTS

U.O.M.: mm [INCHES]

SHEET: 2 OF 2