

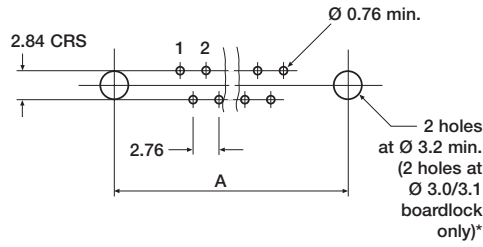
# PCB layouts

Plug viewed from above,  
socket viewed from below.

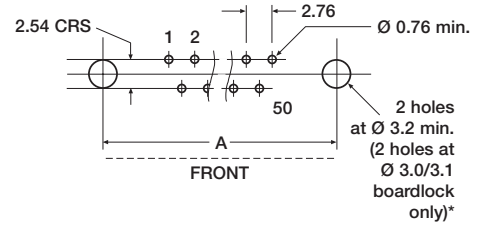
## High Density D only

Plug viewed from above,  
socket viewed from below.

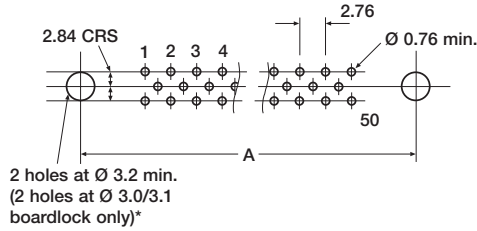
### Straight p.c. 9-37 way



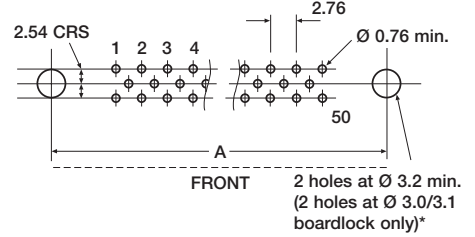
### 90° p.c. 9-37 way



### 50 way



### 50 way

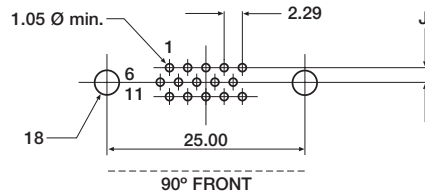


\*Special D only

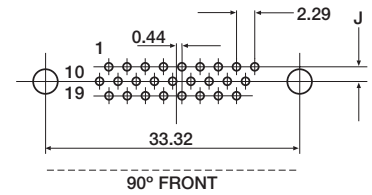
#### DIMENSIONS

Contact Arrangement	A crs
9	25.00
15	33.32
25	47.04
37	63.50
50	61.10

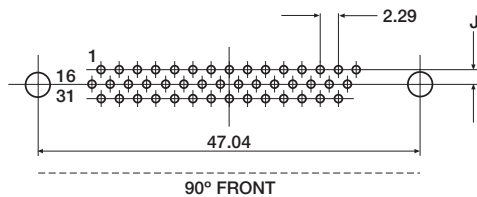
### 15 way High Density D



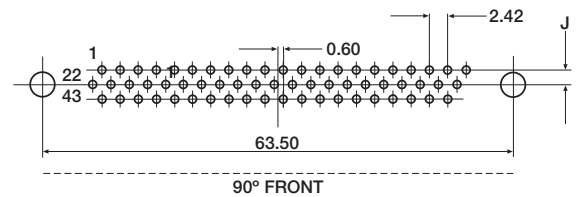
### 26 way High Density D



### 44 way High Density D



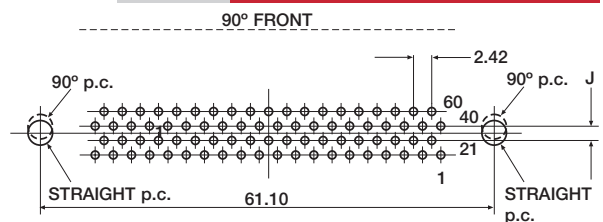
### 62 way High Density D



#### DIMENSIONS

Contact Arrangement	Straight p.c. J	90° p.c. J
15	1.98	2.54
26	1.98	2.54
44	1.98	2.54
62	1.98	2.54
78	2.08	2.54

### 78 way High Density D



# ORDERING information

## for CONNECTORS

### Series

D – Standard/Budget/Crimp  
SD – Special D  
LD – Special D 90° p.c. alternative  
HD-High Density

### Shell size

E, A, B, C and D

### Mounting options/crimp select

No designator – Standard fixing holes  
B – 90° brackets and stabiliser rivetted (fitted on 50 and 90° p.c. as standard)  
F – Float mount for rear panel mounting  
R – Reverse float mounting  
G – MP501 rivetted  
H – 4-40 UNC threaded inserts fitted  
K – MP625 and screwlock fitted  
L – MP501-2 screw mounted  
N – 90° brackets and stabiliser with screwlock fitted  
S – Screwlock fitted  
T – Boardlocks fitted  
X – Screwlocks and Boardlocks fitted  
C-Crimp (contacts ordered separately)

### Shell finish

No designator – Zinc/yellow passivate  
T – Tinned (socket only)  
TD – Tinned and dimpled (plug only)

### Performance code

No designator – standard, HD, special, crimp  
B – Budget

### Termination type

No designator – Solder bucket (and crimped when selector code has been used)  
N – 90° p.c.  
OL – Straight p.c.  
W – Wire wrapping

### Contact type

P – Plug S – Socket

### Contact arrangement

9, 15, 25, 37 and 50  
High Density 15, 26, 44, 62 and 78

## CONTACT ORDERING INFORMATION

### Contact/Wire Gauge

MP642-Pin, 24/28 A.W.G (HD only)  
MP643-Socket, 24/28 A.W.G (HD only)  
MP647-Pin, 24/28 A.W.G (crimp D only)  
MP648-Socket, 24/28 A.W.G (crimp D only)  
MP649-Pin, 20/24 A.W.G (crimp D only)  
MP650-Socket, 20/24 A.W.G (crimp D only)

MP642 R 06

### Method of supply

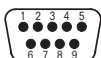
No designator – in packs of 100  
R – 10,000 on a reel

### Performance Code

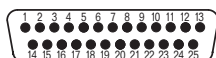
**High Density**  
05-Pin, 200 operations  
06-Pin, 50 operations  
15-Socket, 200 operations  
16-Socket, 50 operations  
**Crimp D**  
45-Pin, standard 500 operations  
46-Pin, budget 300 operations  
55-Socket, standard 500 operations  
56-Socket, budget 300 operations

## CONTACT ARRANGEMENT (viewed from mating face of male connector)

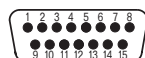
### Special, Standard and Crimp D



E - 9 contacts



B - 25 contacts



A - 15 contacts



C - 37 contacts



D - 50 contacts

### High Density D



E - 15 contacts



B - 44 contacts



A - 26 contacts



C - 62 contacts



D - 78 contacts

## Accessories

A range of accessories are available including automatic and hand crimp tools, insertion and extraction tools – ask our sales office for details.

Due to our policy of continuous product development, ITW McMurdo Connectors retain the right to change the specification at any time without prior notice. Designed & printed in the UK.

**ITW McMurdo Connectors**  
Division of ITW Limited  
Norway Road  
Hilsea  
Portsmouth  
PO3 5HT  
United Kingdom  
Tel: 02392 656200  
Fax: 02392 666352  
e-mail: [info@itwmcmurdo.co.uk](mailto:info@itwmcmurdo.co.uk)  
[www.itwmcmurdo.co.uk](http://www.itwmcmurdo.co.uk)



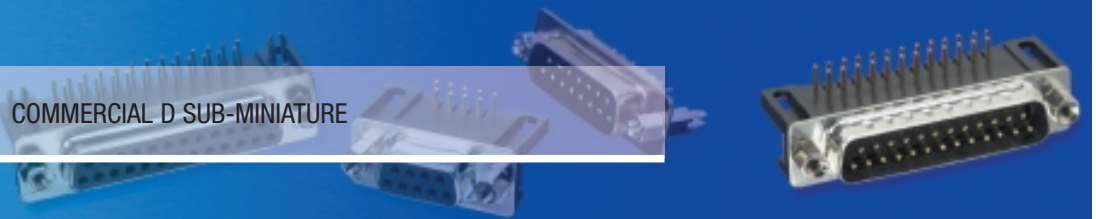


# D range connectors

## Special D

---

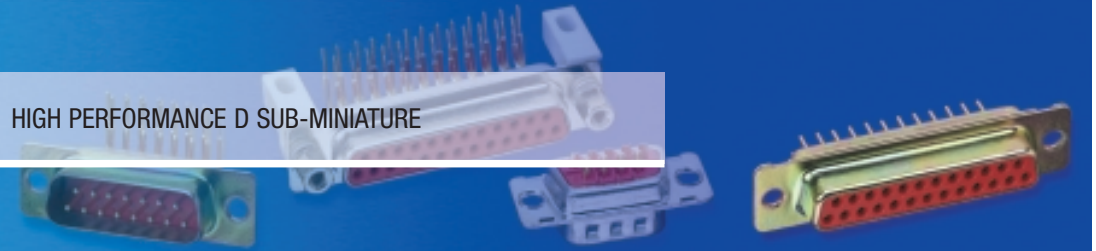
COMMERCIAL D SUB-MINIATURE



## Standard D

---

HIGH PERFORMANCE D SUB-MINIATURE



## Crimp D

---

FLEXIBLE AND FAST ASSEMBLY D SUB-MINIATURE



## High Density D

---

INCREASED DENSITY D SUB-MINIATURE



## D Accessories

---

**ITW** **McMurdo**  
**Connectors**

## Special D

A range of D connectors utilising stamped and formed or turned contacts to provide a low cost option for commercial applications.

### COMMERCIAL D SUB-MINIATURE



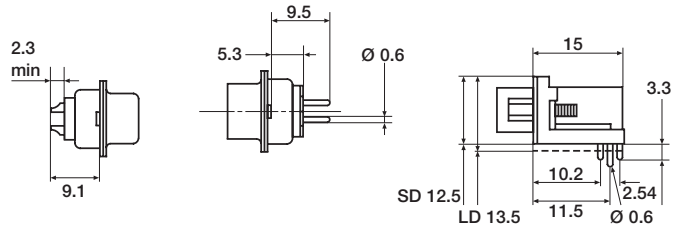
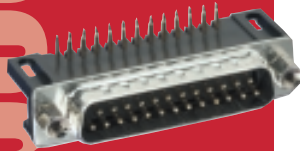
#### FEATURES

Choice of three termination styles – solder bucket, straight p.c. and 90° p.c.

Threaded inserts on 90° p.c. versions as standard – accepts a wide range of mounting hardware.

Tinned and dimpled shell options – for EMI/RFI shielding.

Optional solderable boardlock features for 90° p.c. types – reduces installation time.



Solder Bucket

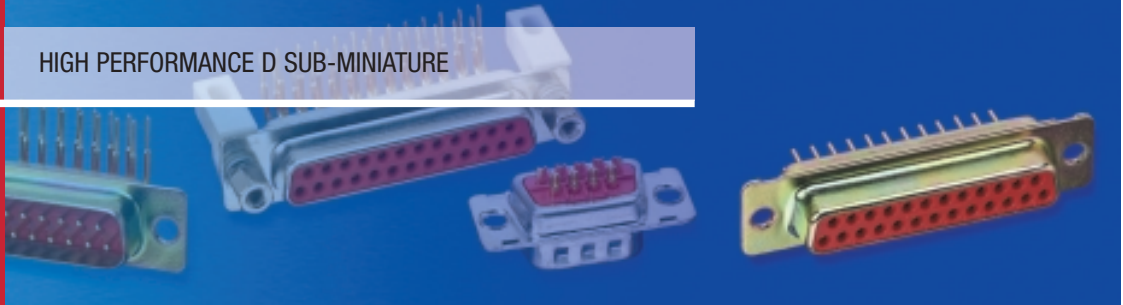
Straight P. C.

90° P. C.

## Standard D

Designed for demanding industrial applications, McMurdo's D connectors offer precision turned contacts in two performance levels: Standard D offers a minimum of 500 operations. Budget D has been developed for harsh industrial applications offering 300 operations.

### HIGH PERFORMANCE D SUB-MINIATURE



#### FEATURES

Standard D meets the most demanding requirements.

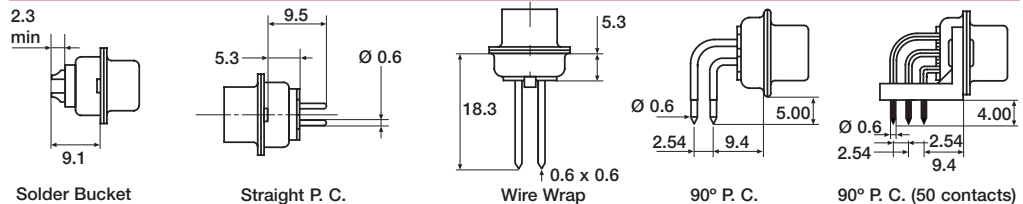
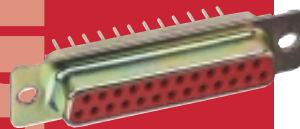
Precision turned contacts.

Available in five shell sizes, providing up to 50 contacts.

Solder bucket, straight p.c., 90° p.c. and wire wrapping termination styles – to suit all your applications.

Tinned and dimpled shell options – for EMI/RFI shielding.

Wide range of accessories – greater user flexibility.



Solder Bucket

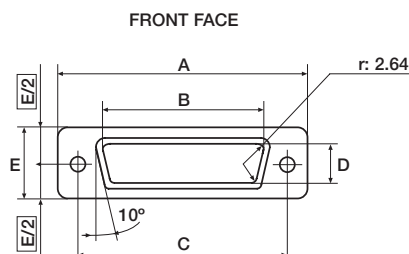
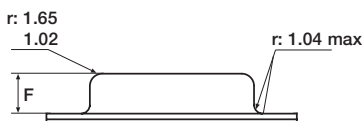
Straight P. C.

Wire Wrap

90° P. C.

90° P. C. (50 contacts)

## All ranges: male



No. of contacts	FRONT FACE					
	A	B	C	D	E	F
9	31.19	17.04	25.12	8.48	12.93	6.12
	30.43	16.79	24.87	8.23	12.17	5.82
15	39.52	25.37	33.45	8.48	12.93	6.12
	38.76	25.12	33.20	8.23	12.17	5.82
25	53.42	39.09	47.17	8.48	12.93	5.99
	52.65	38.84	46.91	8.23	12.17	5.69
37	69.70	55.55	63.63	8.48	12.93	5.99
	68.94	55.30	63.37	8.23	12.17	5.69
50	67.34	52.93	61.24	11.33	15.75	5.99
	66.55	52.68	60.99	10.95	14.99	5.69

# D range connectors

## Technical Data

### FEATURES

- Shell
- Insulator
- Contact
- Termination – solder bucket
- straight PC
- 90° PC
- CRIMP

### MECHANICAL

- Operations
- Temperature range

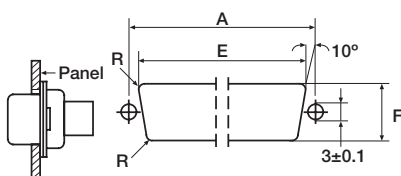
### ELECTRICAL

- Current – individual contact (in isolation) at 70°C
- All contacts (simultaneously) at 70°C
- Working voltage (DC or AC PEAK)
- Proof voltage (DC or AC PEAK)
- Contact resistance
- Insulation resistance

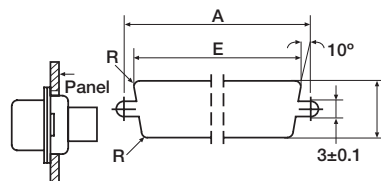
	Special D	Standard D	Crimp D	High Density D
		Steel plated zinc/yellow passivate or tin		
		Thermoplastic rated UL94V-0		
		Copper alloy plated hard acid gold		
Tin		Gold	–	Tin
Tin		Gold	–	Tin
Tin		Gold	–	Tin
–		–	Tin or Gold	Tin
Operations	100	300 (budget) 500 (standard)	300 (budget) 500 (standard)	100 50 or 200 crimp
Temperature range		-55°C to +105°C		
Current – individual contact (in isolation) at 70°C	3A	6.5A	3A	3A
– All contacts (simultaneously) at 70°C	2A	3.3A	2A	2A
Working voltage (DC or AC PEAK)	350V	500V	350V	300V
Proof voltage (DC or AC PEAK)	1500V	1500V	1500V	1000V
Contact resistance	15mΩ max	10mΩ max	15mΩ max	15mΩ max
Insulation resistance	5000mΩ min	1000mΩ min	5000mΩ min	1000mΩ min

## All ranges: panel mounting options

Shell size	Contact Arrangement			Rear Panel Mounting					Front Panel Mounting				
	No of Contacts	D,SD,LD	HD	A	E	F	R	Std	Float	Std	Float	R	
E	9	15	25.00	20.32	21.16	11.30	12.09	3.50	22.07	22.88	12.90	13.71	2.25
A	15	26	33.32	28.70	29.49	11.30	12.09	3.50	30.40	31.22	12.90	13.71	2.25
B	25	44	47.04	42.42	43.20	11.30	12.09	3.50	44.14	44.96	12.90	13.71	2.25
C	37	62	63.50	58.93	59.77	11.30	12.09	3.50	60.60	61.42	12.90	13.71	2.25
D	50	78	61.10	56.26	57.02	13.97	14.78	3.50	58.21	59.44	15.69	16.51	2.25



Rear Panel Mounting



Front Panel Mounting

# Crimp D

## FLEXIBLE AND FAST ASSEMBLY D SUB-MINIATURE

Maximum flexibility and reduced assembly costs are achieved through full or partial loading of selectively plated stamped and formed contacts.



### FEATURES

Replaceable contacts – no connector wastage.

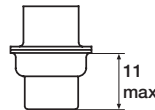
Complete selection of crimp tooling enables quick assembly.

Wire strip length 2.4 ± 0.2mm.

Two contact performance levels – Budget for commercial and Standard for industrial applications.

Accepts wire sizes of 20 to 28 AWG – offers greater flexibility.

Tinned and dimpled shell options – for effective EMI/RFI shielding.

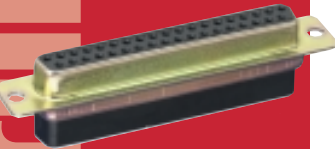


Crimp

### ASSEMBLY TOOLS AND HAND TOOLS



Hand Crimp Tool MP600-D/HD  
Insertion/extraction tool MP601-D or MP601-HD



# High Density D

## INCREASED DENSITY D SUB-MINIATURE

Increased contact density is provided in five industry standard shell sizes providing up to 78 contacts. A choice of four termination styles including crimp are available making this range one of the most versatile.



### FEATURES

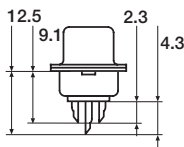
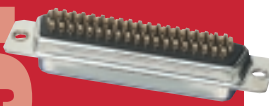
Tinned and dimpled shell as standard for enhanced electrical continuity and effective EMI/RFI shielding.

Threaded inserts – enable quick assembly of mounting hardware to 90° p.c. versions.

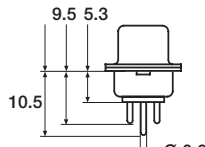
Optional screwlocks and solderable boardlocks fitted to 90° p.c. versions.

Solder bucket, straight p.c. 90° p.c. and crimp termination styles.

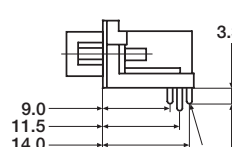
Compatible with Standard D range accessories.



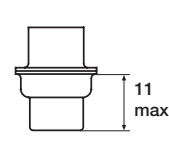
Solder Bucket



Straight P.C.

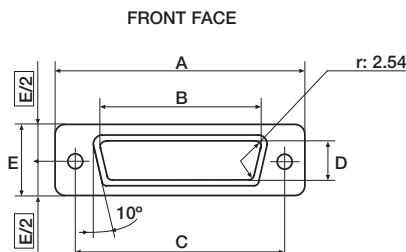
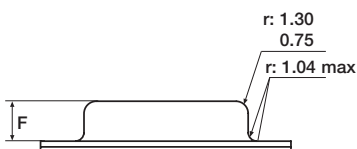


90° P.C.



Crimp

## All ranges: female



No. of contacts	A	B	C	D	E	F
9	31.19 30, 43	16.46 16.21	25.12 24.87	8.03 7.77	12.93 12.17	6.30 6.05
15	39.52 38.76	24.79 24.54	33.45 33.20	8.03 7.77	12.93 12.17	6.30 6.05
25	53.42 52.65	38.51 38.25	47.17 46.91	8.03 7.77	12.93 12.17	6.30 6.05
37	69.70 68.94	54.97 54.71	63.63 63.37	8.03 7.77	12.93 12.17	6.30 6.05
50	67.34 66.55	52.56 52.30	61.24 60.99	10.87 10.62	15.75 14.99	6.30 6.05