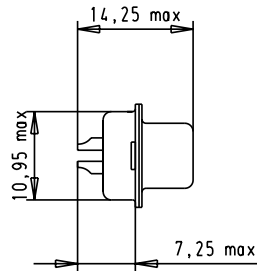
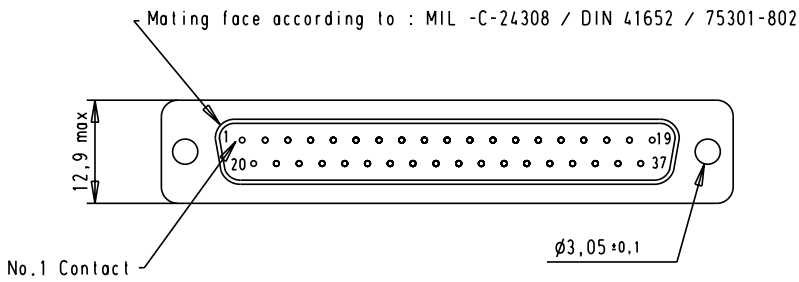


5 4 3 2 1

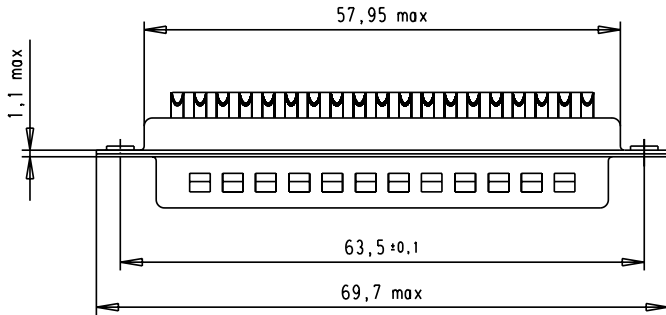
SPECIFICATION



Mating Cycles	200
Capacitance	1000pf±20%
Working Voltage	100v
Current Rating	7.5A
Insulation Resistance	>1GΩ

FREQUENCY (MHz)	ATTENUATION dB
5	1dB
10	3dB
50	12dB
100	20dB
500	34dB
1000	30dB



Max wire ϕ 1,0 mm



			Dot.	Name	 All Dim. in mm Orig. Size DIN A 4	D-Sub, male, Straight 37 Poles, with turned solder bucket and hole	No. of Stab/ Scale 1.5:1
		Detail.	8-JUL-02	CV			
		Insp.					
		Stand.					
31058	8-JUL-02	CV	HARTING EURL F-95972 Paris			TB 09644217230	Blot / Page 1 / 1
Mod.	Dot.	Name				Sub.	