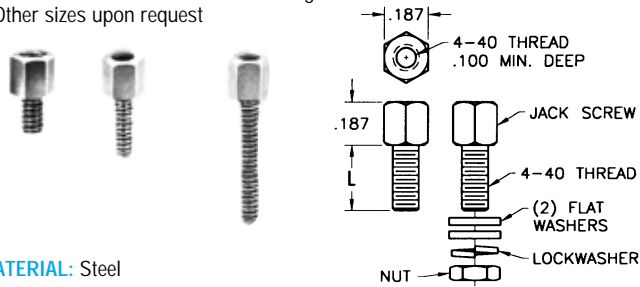


## JACK SCREWS

- Equivalent to AMP, CANNON & TRW Jack Screws
- "D" subminiature connector mounting screw
- Other sizes upon request

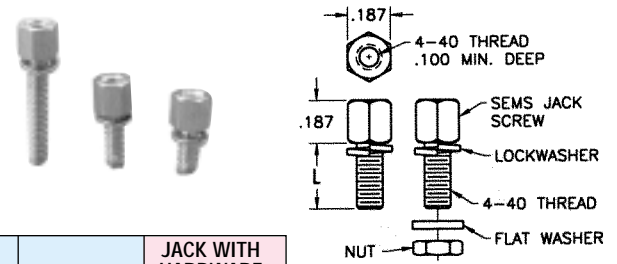


**MATERIAL:** Steel

JACK ONLY		"L" DIM.	JACK WITH HARDWARE (Supplied Unassembled in Bulk)	
ZINC PLATE & GOLD IRIDITE	ZINC PLATE & CLEAR CHROMATE		ZINC PLATE & GOLD IRIDITE	ZINC PLATE & CLEAR CHROMATE
7228	7228-5	.250	7229	7229-5
7230	7230-5	.312	7231	7231-5
7232	7232-5	.625	7233	7233-5

## SEMS JACK SCREWS

- "D" subminiature connector mounting screw
- Captivated helical spring lockwasher, simplifies use
- Flat washer and nut supplied unassembled



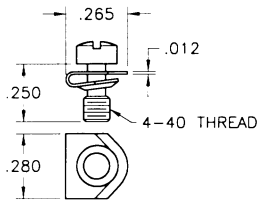
"L" DIM.	JACK ONLY CAT. NO.	JACK WITH HARDWARE (Supplied Unassembled in Bulk)
.285	7235	7236
.347	7237	7238
.660	7239	7240

**MATERIAL:** Steel, Zinc Plate & Clear Chromate

## MOUNTING HARDWARE

Our assortment of standard clips and washers offer the needed flexibility to secure your connectors in the manner best suited to your instrumentation and design.

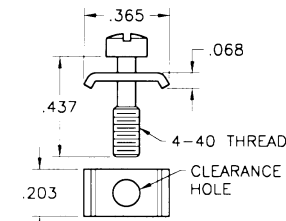
### "U" CLIP



**CAT. NO. 2062**

**MATERIAL:** Clip & Screw: Steel, Zinc Plate & Gold Iridite

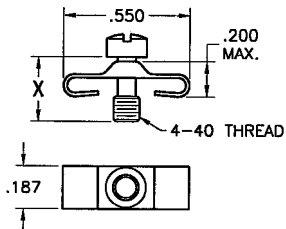
### SADDLE WASHER



**CAT. NO. 2063**

**MATERIAL:** Clip & Screw: Steel, Zinc Plate & Gold Iridite

### "BOW TIE" RETAINING CLIP



CAT. NO.	X
2060	4-40 x 1/4
2061	4-40 x 9/32

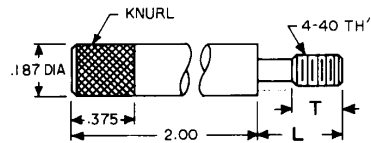
**MATERIAL:** Clip & Screw: Steel, Zinc Plate & Gold Iridite

## TURNABLE JACK SCREWS

Turnable jack screws, available with or without screwdriver slot make mating and disconnecting computer connectors quick and easy.

### DIRECT ACCESS

AVAILABLE WITH OR WITHOUT SCREWDRIVER SLOT.

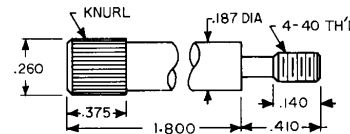


"T" DIM.	"L" DIM.	CAT. NO. WITHOUT SLOT	CAT. NO. WITH SLOT
.125	.250	2064	2065
.250	.437	2066	2067

**MATERIAL:** Steel, Black Oxide

### STRAIGHT KNURL

AVAILABLE WITH OR WITHOUT SCREWDRIVER SLOT.

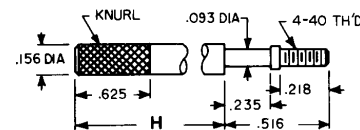


CAT. NO. WITHOUT SLOT	CAT. NO. WITH SLOT
2072	2073

**MATERIAL:** Steel, Zinc Plate & Clear Chromate

### SLIM LINE

AVAILABLE WITH OR WITHOUT SCREWDRIVER SLOT.



"H" DIM.	CAT. NO. WITHOUT SLOT	CAT. NO. WITH SLOT
1.250	2068	2069
1.750	2070	2071

**MATERIAL:** Steel, Nickel Plate