

NOTES:

1. SPECIFICATIONS:

ELECTRICAL:
 WITHSTANDING VOLTAGE: MINIMUM 1000 V RMS @ SEA LEVEL
 INSULATION RESISTANCE: INITIAL 5000 MEGOHMS MAXIMUM,
 1000 MEGOHMS MIN. AFTER ENVIRONMENTAL TESTING.
 CONTACT RATING: 5 AMPS
 CONTACT RESISTANCE: 2.7 MILLIOHMS MAX.

MATERIALS:
 INSULATOR: BLACK UL94V-0 RATED GLASS FILLED NYLON
 CONTACT(1030-1952-000): COPPER ALLOY
 CONTACT AREA PLATING: GOLD OVER NICKEL,
 CONNECTOR SHELL: STEEL, PLATING ZINC WITH CLEAR CHROMATE.

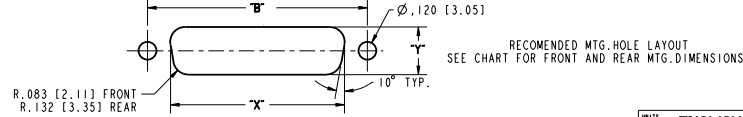
ENVIRONMENTAL:
 OPERATING TEMPERATURE: -65°C TO +125°C

TERMINATION:
 CRIMP WILL ACCOMMODATE # 20 TO 28 AWG WIRE.
 TERMINATION TOOLS:
 CRIMP TOOL: M22520/2-01
 INSERTION/EXTRACTION TOOL: CIET-20-HDB
 POSITIONER: EP-580

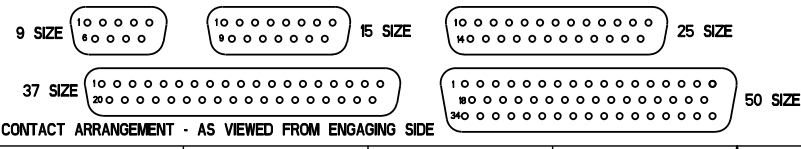
2. DIMENSIONS IN [] ARE IN MILLIMETERS.

DRAWING REVISIONS			
REV	DOCUMENT	APP	DATE
A	DO 05-11146	AKB	01/07/06
B	ECN 06E296		

NUMBER OF POSITIONS	SELECTIVE GOLD FLASH PLATING (.120" [3.05] MTG. HOLES)		CONTACTS	DIMENSION										FRONT MOUNTING HOLE DIMENSIONS		REAR MOUNTING HOLE DIMENSIONS				
	PART NO.	FACTORY NO.		"A"	"B"	"C"	"D"	"E"	"F"	"G"	"H"	"J"	"K"	"X"	"Y"	"X"	"Y"			
9	DEUH-9P	702 03 09 001	INCLUDED	1.213 [30.81]	.984 [24.99]	.697 [17.70]	.360 [9.14]													
	DEUH-9P-FO	702 03 09 005	NOT INCLUDED																.759 [19.28]	
15	DAUH-15P	702 03 15 001	INCLUDED	1.541 [39.14]	1.312 [33.32]	1.025 [26.03]	.378 [9.60]													
	DAUH-15P-FO	702 03 15 005	NOT INCLUDED																	1.083 [27.51]
25	DBUH-25P	702 03 25 001	INCLUDED	2.088 [53.04]	1.852 [47.04]	1.583 [40.21]	.378 [9.60]													
	DBUH-25P-FO	702 03 25 005	NOT INCLUDED																	
37	DCUH-37P	702 03 37 001	INCLUDED	2.729 [69.32]	2.500 [64.50]	2.231 [56.67]	.378 [9.60]													
	DCUH-37P-FO	702 03 37 005	NOT INCLUDED																	
50	DDUH-50P	702 03 50 001	INCLUDED	2.635 [66.93]	2.406 [61.11]	2.127 [54.02]	.484 [12.29]													
	DDUH-50P-FO	702 03 50 005	NOT INCLUDED																	



ROHS COMPLIANT



UNITS: ENGLISH	PRO/E	MODEL BY: V. SHUKLA
DO NOT SCALE DRAWING	DATE: 06/17/05	TITLE: D*U SERIES CRIMP & POKE CONNECTOR PLUG ASS'Y (.120" HOLES)
DESIGN ENGINEER: V. SKUZA	DATE: 06/17/05	MATERIAL: CONTROL SPEC NUMBER
DESIGN ENGINEERING MGR.: A. BALI	DATE: 07/09/05	PROJECT NUMBER: C14740
MFG. ENGINEERING: A. SHAH	DATE: 07/07/05	CAD FILE NUMBER: DXUHXXP
QUALITY ASSURANCE: J. OCEGUERA	DATE: 07/06/05	CAGE IDENT NO: 71785
DATE: 07/06/05	SCALE: 1:1	SHEET 1 OF 1

THIS DOCUMENT IS THE PROPERTY OF CINCH. NEITHER THIS DOCUMENT NOR THE INFORMATION CONTAINED HEREIN IS TO BE REPRODUCED OR DISCLOSED TO OTHER PERSONS WITHOUT CONSENT OF CINCH.